



EXECUTIVE COUNTRY ESTATES

COMING SOON TO SEAGRAVE & EPSOM
STARTING FROM \$1.6M

At the mouth of Lake Scugog and in the heartland of Durham comes Springwinds – two limited collections of executive country estates in Seagrave and Epsom. It's here where open space, natural beauty, and a gentle stillness offer the ultimate luxury.

A retreat to the greatest aspects of countryside living, and a true treat to homeowners who dream for more.

NATURE'S WAY OF LIVING



EXCELLENCE, FROM
OUR FAMILY TO YOURS.

The principals of Twelve Stone Group have been successfully building custom homes since 1997, and full-scale communities since 2001.

As a family-run business, we take exceptional pride in our product. Our years of experience have translated directly into a real depth of expertise. We build each home to the same rigorously high standards that we would expect if we were moving into them ourselves.



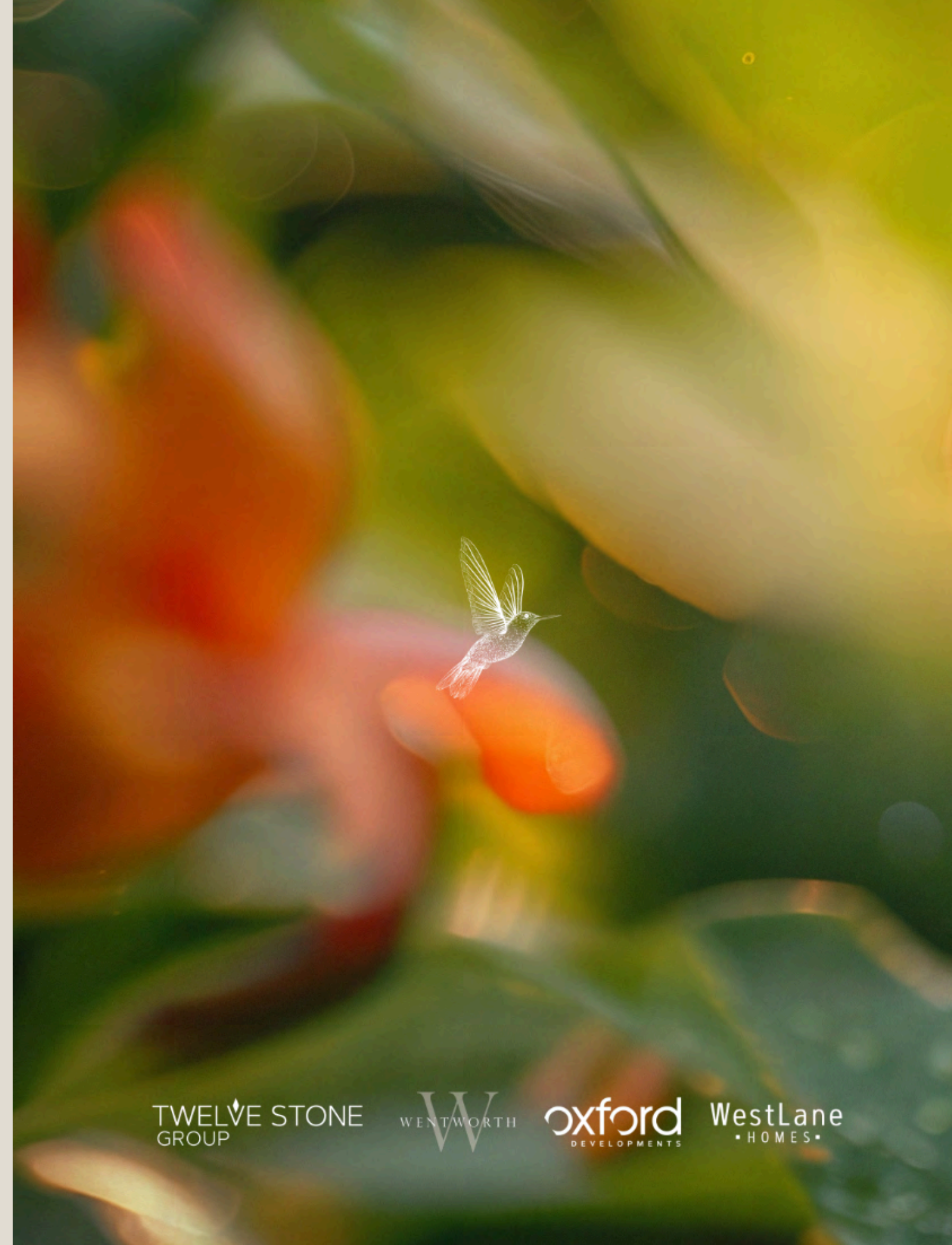
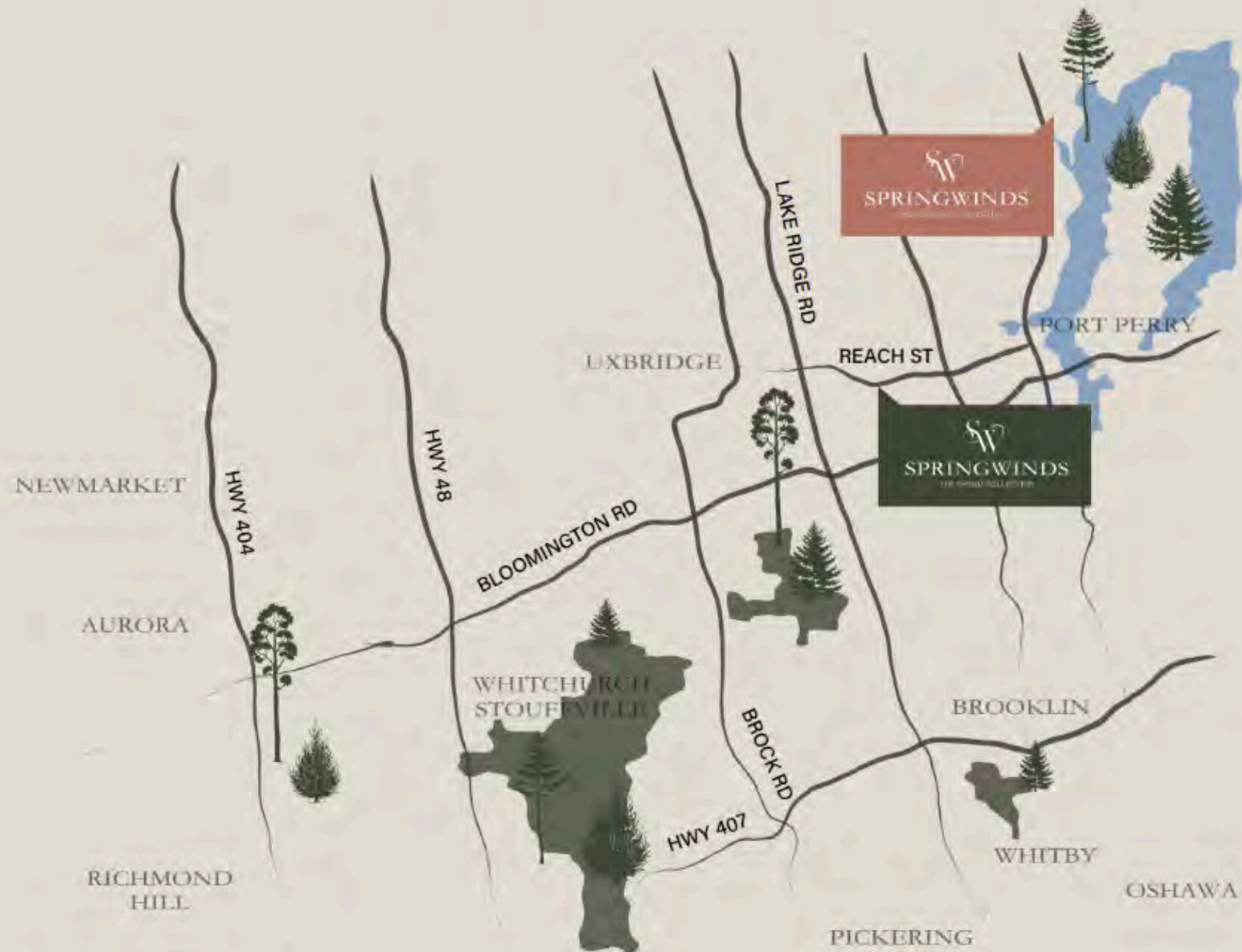
Not only do we work hard to build new homes, we also take time to build relationships with our customers. We distinguish ourselves from other builders in our commitment to enhancing the overall home ownership experience, from our wide selection of layouts and designs to our superior construction quality, to our exceptional customer service.

In addition to our custom home building, the Twelve Stone Group team is proud to be affiliated with the highly respected company Oxford Developments. As one of the exclusive builders for Oxford, we are proud to work with them and bring our homebuilding experience and skills to enhance each of their outstanding communities.

TWELVE STONE
GROUP

SPRINGWINDS -
SEAGRAVE AND EPSOM

TWO COLLECTIONS, ONE LUXURY LIFESTYLE



TWELVE STONE
GROUP

WENTWORTH

oxford
DEVELOPMENTS

WestLane
• HOMES •

Lots Up to 2.35 Acres

All Lots on Septic System,
Well-Water and Propane

THE EPSOM
COLLECTION

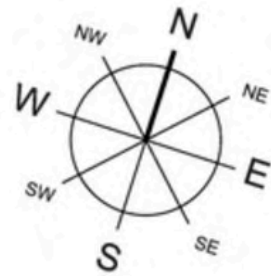
17 LUXURY
COUNTRY ESTATES





SPRINGWINDS

THE EPSOM COLLECTION



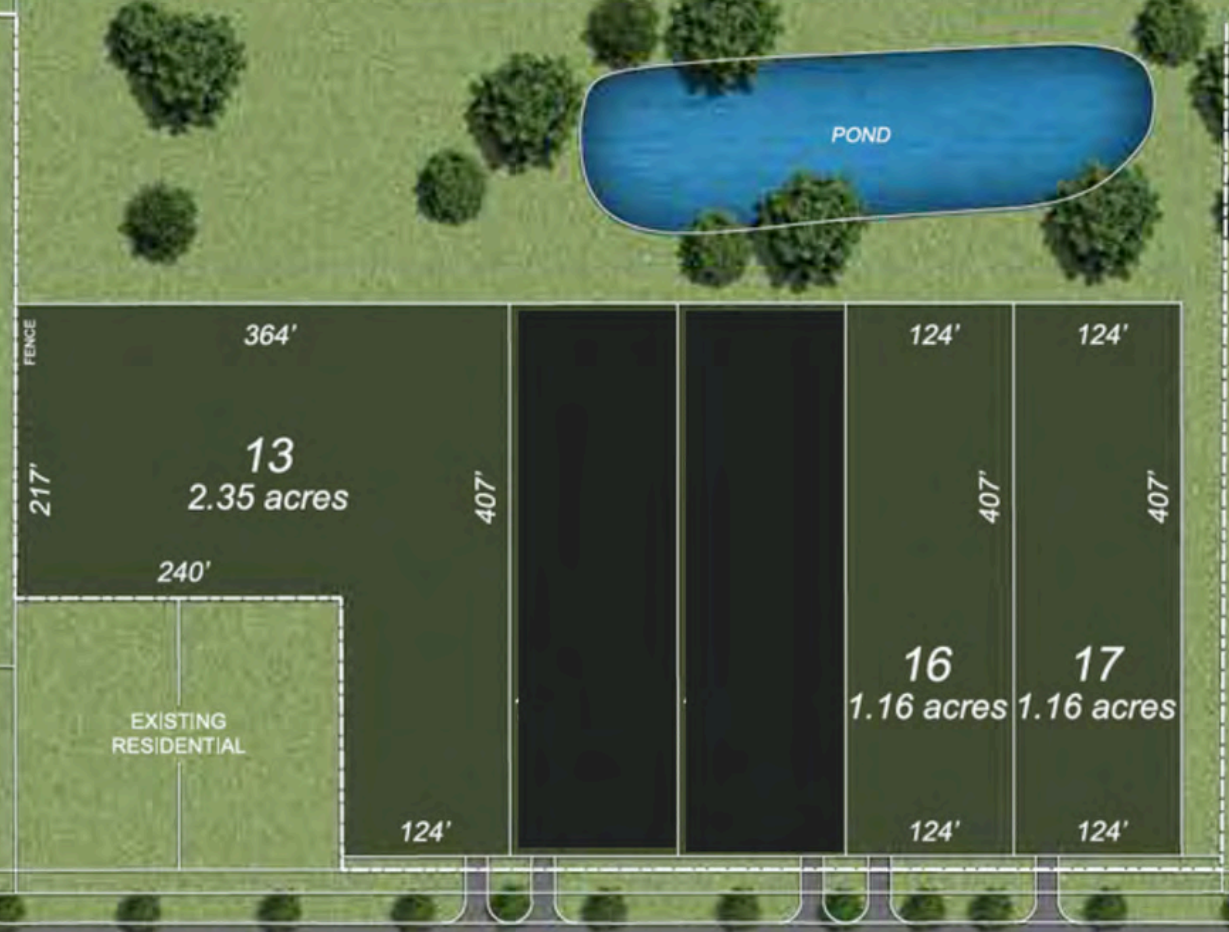
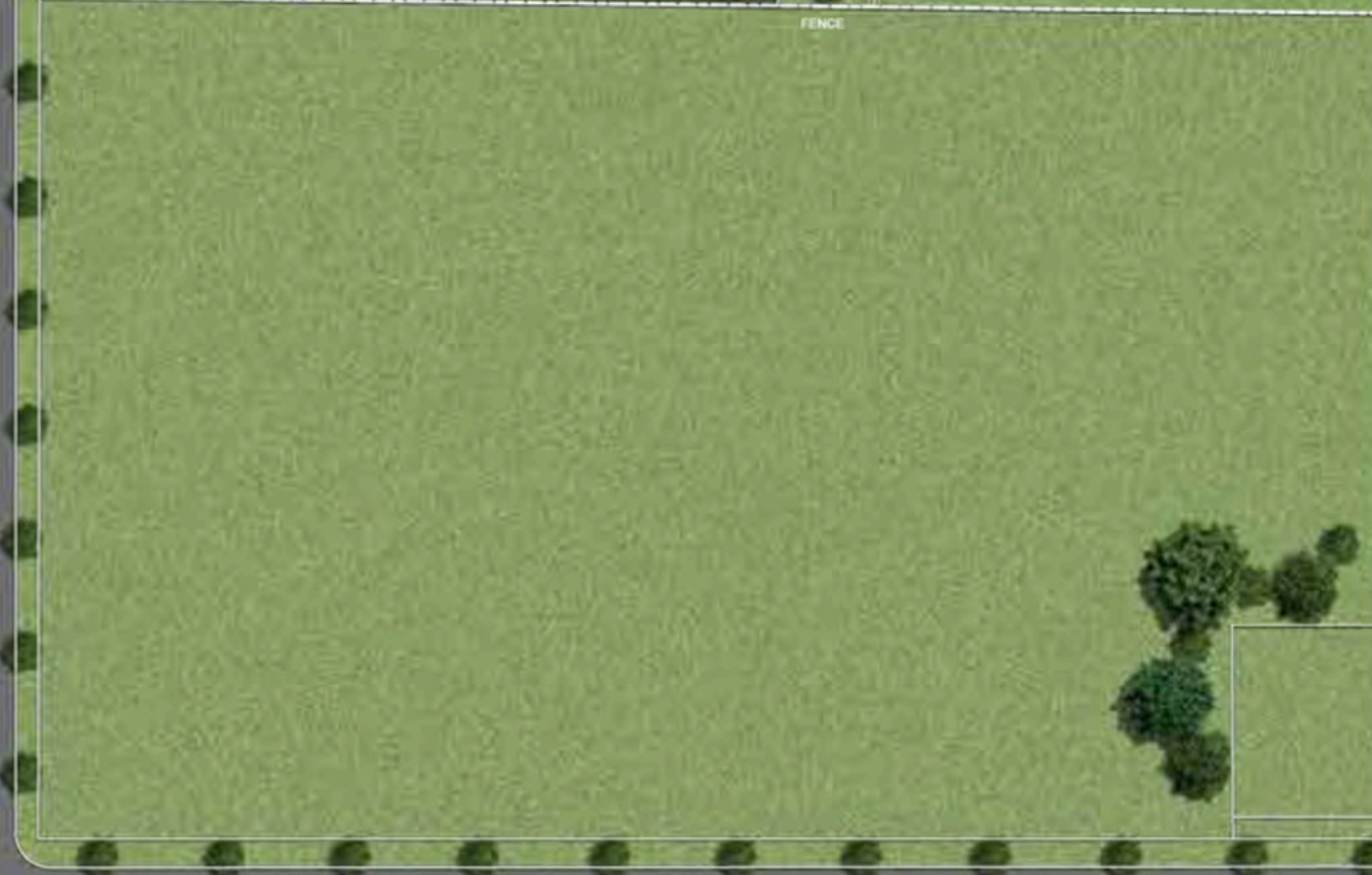
TWELVE STONE GROUP WENTWORTH oxford DEVELOPMENTS WestLane HOMES

All illustrations are artist's concept. Lot sizes and specifications are approximate and subject to change without notice. Subject to change. E. & O.E. SEPTEMBER 2024.

MARSH HILL ROAD



CURRENT FARMLAND



'DURHAM ROAD No. 8' REACH STREET



UXBRIDGE

SHOPPING & DINING

- 01 Downtown Uxbridge**
- Urban Pantry
 - Wixan's Bridge
 - Corner House Pub & Grill
 - Gangster Cheese
 - M.C. Asian Kitchen
 - Fig Kitchen & Market
 - Col. McGrady's Pub & Grill
 - The Lemonade Stand
 - Pizza Pizza
 - Muko Sushi
 - The Second Wedge Brewing Co.
 - The Meat Merchant
 - Mr. Gourmet Home Food
 - Universal Wings & Burgers
 - Keith's Flower Shop

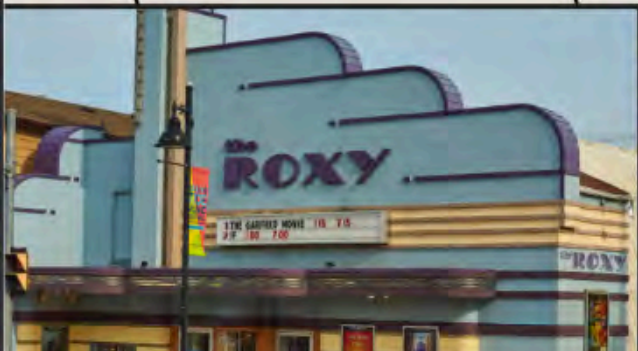
- 02 Uxbridge South**
- Elgin Centre
 - Hillside Place
 - Uxbridge Shopping Centre
 - Walmart Supercentre
 - Zehrs
 - Rona
 - Canadian Tire
 - Dollarama
 - Staples
 - Peavey Mart
 - Boyd's Sports
 - Marks
 - FedEx
 - Pet Valu
 - LCBO
 - Tim Hortons
 - Halibut House Fish & Chips
 - Popeye's Louisiana Kitchen
 - Boston Pizza
 - Wendy's
 - Wimpy's Diner
 - McDonald's
 - One Eyed Jack
 - Starbucks
 - Swiss Chalet
 - KFC
 - Kawartha Diary
 - Guac Mexi Grill
 - Osomow's Shawarma
 - Vince's Market

SCHOOLS & SERVICES

- 01 Downtown Uxbridge**
- Uxbridge Dance Academy
 - Uxbridge Public Library
 - GO-Transit - to Union Station
 - Uxbridge Dance Academy
 - Uxbridge Music Hall
 - Canada Post
 - Uxbridge Public School
 - Stonemoor School / St. Paul Daycare Centre
 - Uxbridge Secondary School
 - Uxbridge City Hall
- 02 Joseph Gould Public School**
- 03 Quaker Village Public School**
- 04 EduKids Childcare Centres**
- 05 Uxbridge Hospital / Oaktree Medical Centre**
- 06 Service Ontario**
- 07 Uxbridge Fire Hall**
- 08 Pet Hospital on Main**

RECREATION, LEISURE & ENTERTAINMENT

- 01 Downtown Uxbridge**
- Uxbridge Area & Swimming Pool
 - The Roxy theatre
 - Uxbridge Music Hall
 - Uxbridge Youth Theatre
- 02 Uxbridge Arena & Recreation Centre**
- 03 Uxbridge Curling Club**
- 04 Foxbridge Golf Club / Foxbridge Golf Course**
- 05 Uxbridge Skating Club**
- 06 Herrema Soccer Fields**
- 07 Wooden Sticks Golf Club**



NATURE'S WAY OF LIVING

NATURE'S WAY
OF LIVING -
LUXURY IS IN THE DETAILS

2-Storey & Bungalow Designs Available

Home Styles Up to 4,050 Sqft

4 Car Garage Homes Available

All Homes on Septic System, Well-Water & Propane

Starting from \$1,699,990*

*Lot Premiums Additional





The Longbeach

3,496 sqft

4 Beds | 3.5 Baths | 3 Car Garage



The Highland

4,050 sqft

5 Beds | 3.5 Baths | 4 Car Garage



Starting From \$1,699,990*

*Lot Premiums Extra

Closing Dates

Spring 2026

Deposit Structure

With Offer - \$50,000

30 Days - \$25,000

60 Days - \$25,000

90 Days - \$25,000

120 Days - \$25,000

150 Days - \$25,000

180 Days - \$25,000

Lot Premiums

Lot #	Lot Area	Premium
4	1.09 Acres	\$ 75,000
5	1.03 Acres	\$ 75,000
6	1.02 Acres	\$ 75,000
9	1.16 Acres	\$ 200,000
10	1.15 Acres	\$ 200,000
11	1.15 Acres	\$ 200,000
13	2.35 Acres	\$ 250,000
16	1.16 Acres	\$ 100,000
17	1.16 Acres	\$ 100,000