

TREASURE HILL PRESENTS

MARQUIS



SERIES



MARQUIS  
SERIES  
—  
AT HAZEL GLENN



# A COMMUNITY YOU WILL BE PROUD TO CALL YOUR OWN



Marquis series is a spectacular new collection of townhomes in Cambridge. Located off Highway 8, these homes feature premier craftsmanship, spacious and thoughtfully designed layouts, and high-end finishes.

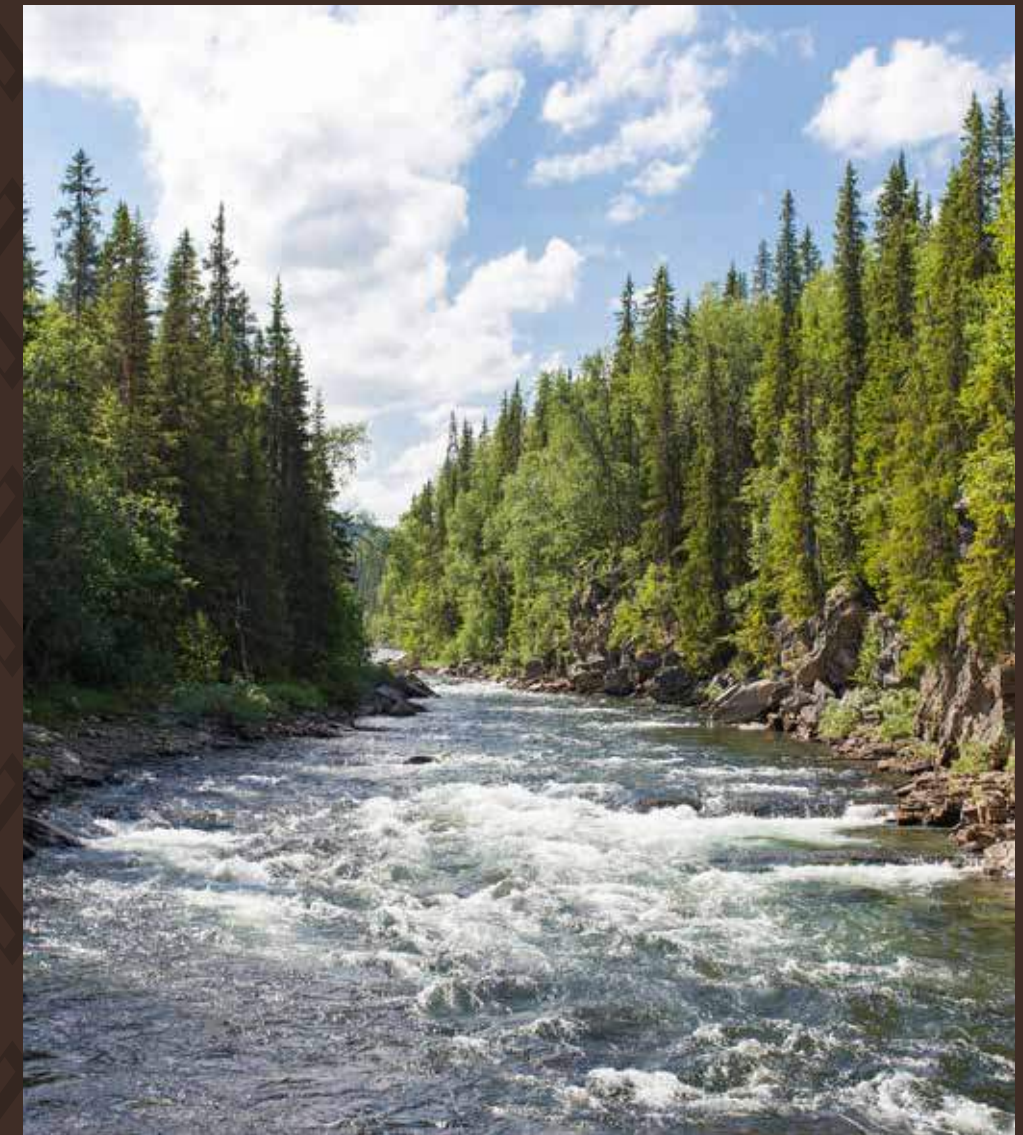
Located in the picturesque south end of the city, Marquis series is less than three minutes by car to Cambridge's major thoroughfares, big box stores, and other amenities. These are homes that your family can grow into, in a community you'll be proud to call your own.







# COME HOME TO CAMBRIDGE



Cambridge is located on the Grand River, one of the best maintained waterways in the province. The natural areas surrounding it feature gorgeous green spaces and kilometres of winding trails.

You will find the city of Cambridge has an abundance of historical charm. The Galt District located in the downtown core offers a unique heritage neighbourhood with a small-town feel, and all the conveniences of city life. World-class healthcare, big box retailers, boutique shopping, plus numerous restaurants to choose from, all at your doorstep.



Downtown Cambridge has a rich commercial history, and local initiatives have beautified and preserved the area. Now, it has also attracted unique businesses that are remaking life in this stunning Southern Ontario city.

Between the serene waterways and historic attractions, you have a wide selection of specialty stores, exceptional dining, as well as art, cultural, and recreational offerings. Spend the day exploring the local conservation areas and the picturesque Grand River waterfront. Take a day trip to one of the many historical sites, Langdon Hall, or golf courses. At Hazel Glenn, these opportunities are in your backyard.

# A CITY FULL OF OPPORTUNITY

1

- Best Buy
- Staples
- The Keg
- LA Fitness
- Wal-Mart
- Canadian Tire
- Home Depot
- Winners
- Lone Star Bar & Grill

2

- Cambridge Shopping Centre

3

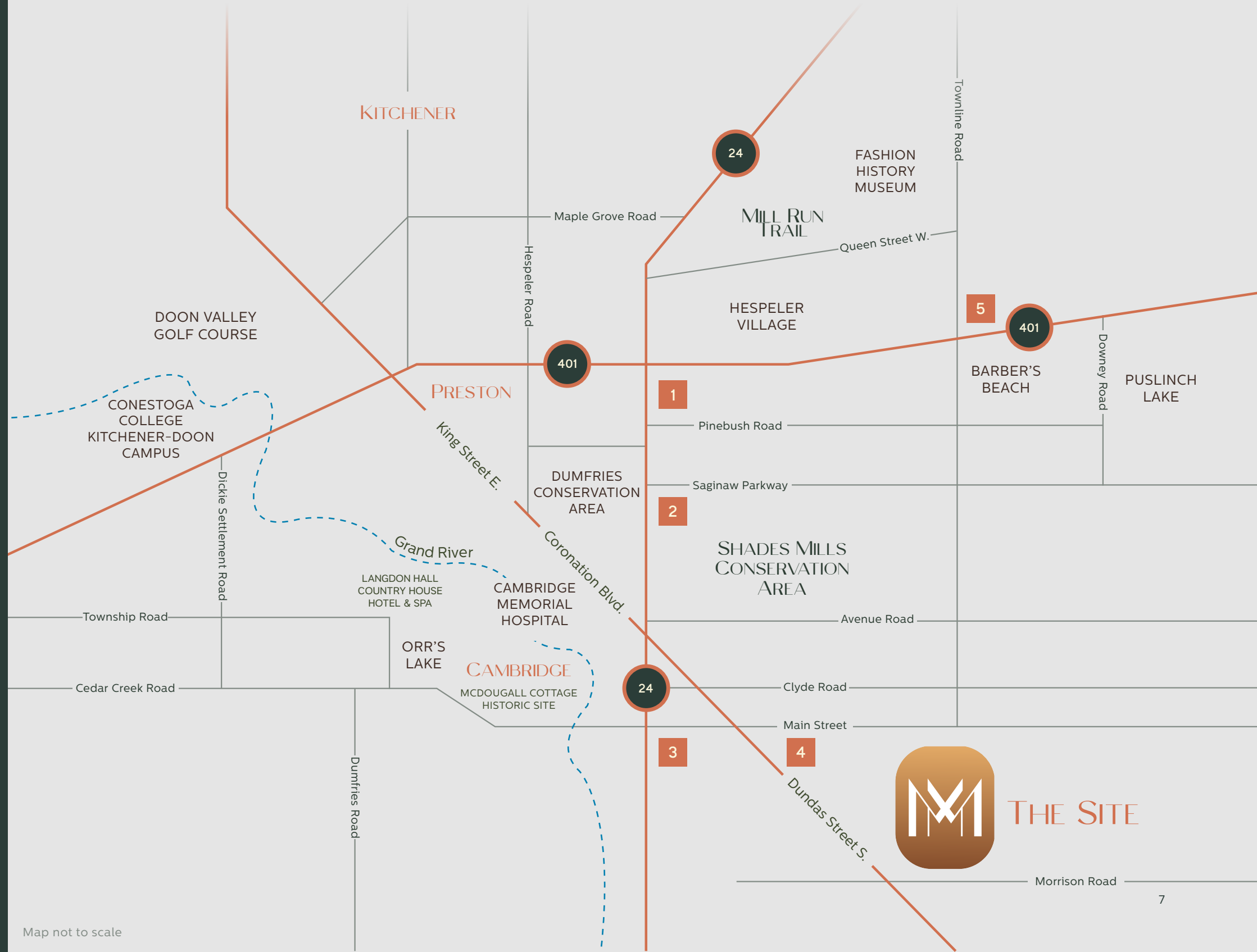
- Downtown Cambridge

4

- Albert's Doughnuts
- Tony's Family Diner
- Chuck's Roadhouse Bar & Grill
- Boston Pizza
- Popeye's
- McDonald's
- LCBO
- Shoppers Drug Mart
- Burger King
- Tim Horton's
- Anytime Fitness
- Swiss Chalet
- Home Hardware
- FreshCo

5

- Puslinch Lake Golf Course
- Puslinch Conservation Area
- Old Marina Restaurant/Gift Shop



Map not to scale





# DISCOVER LIVING IN CAMBRIDGE



RENDERING IS ARTIST CONCEPT





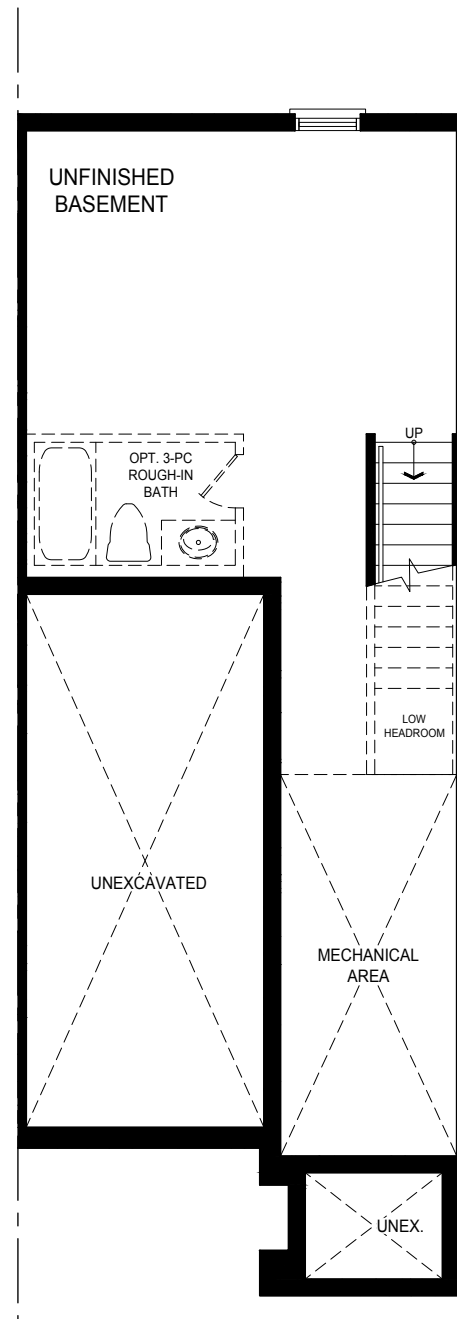
T1 INT



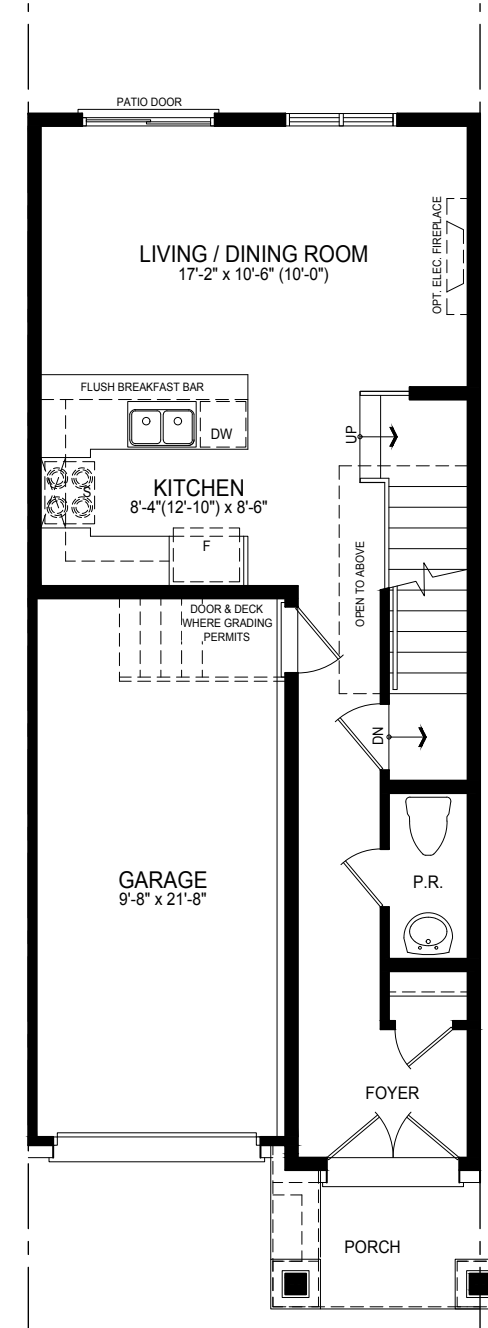
Elevation A1 1,300 sq.ft.



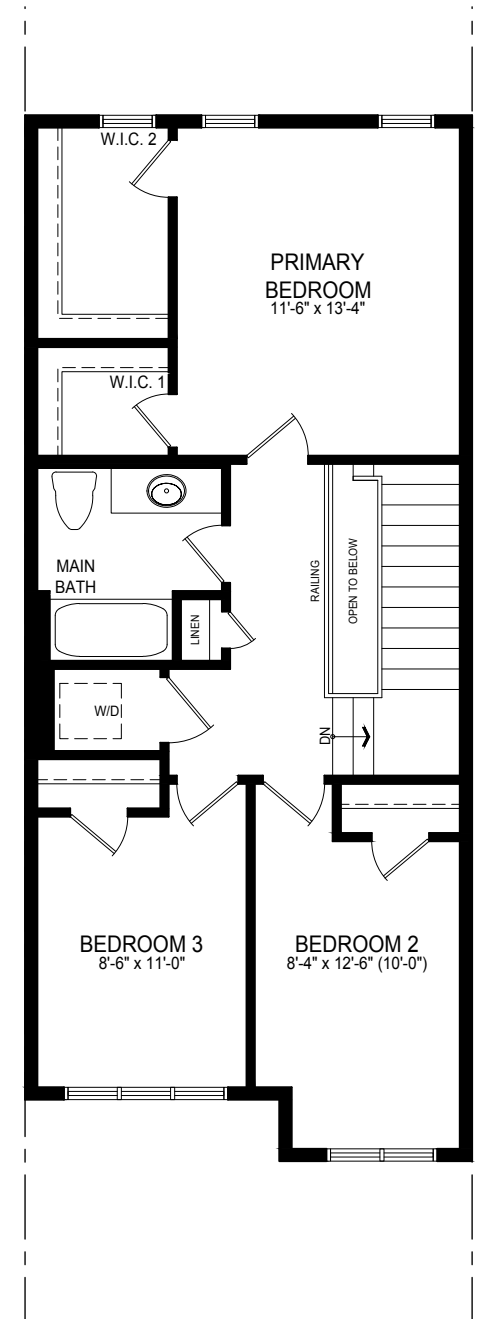
Elevation A2 1,300 sq.ft.



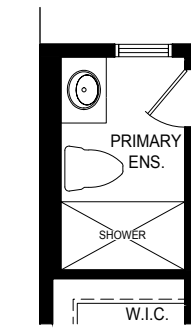
Basement Elev. A1



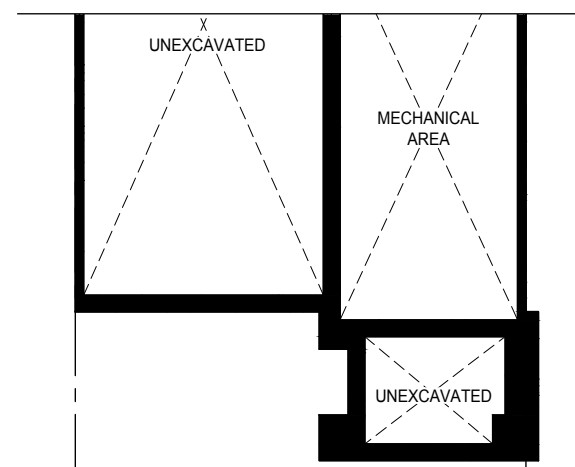
Ground Level Elev. A1



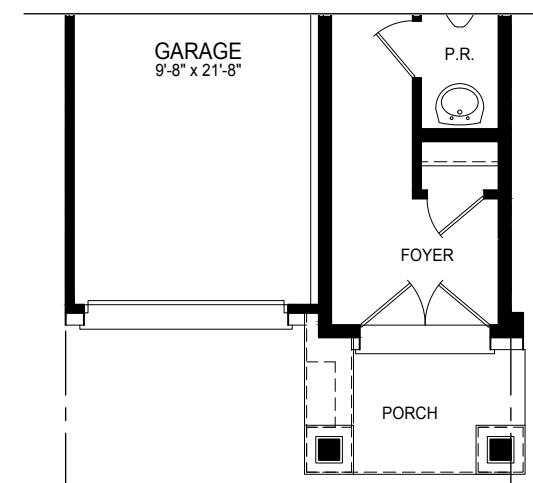
Upper Level Floor Elev. A1



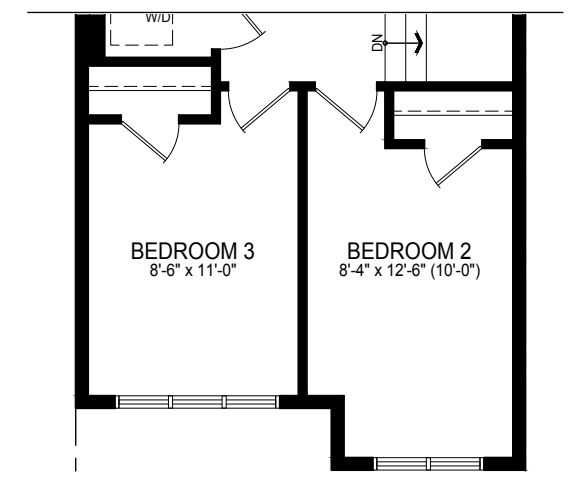
OPTIONAL PRIMARY ENSUITE



Basement Elev. A2



Ground Level Elev. A2

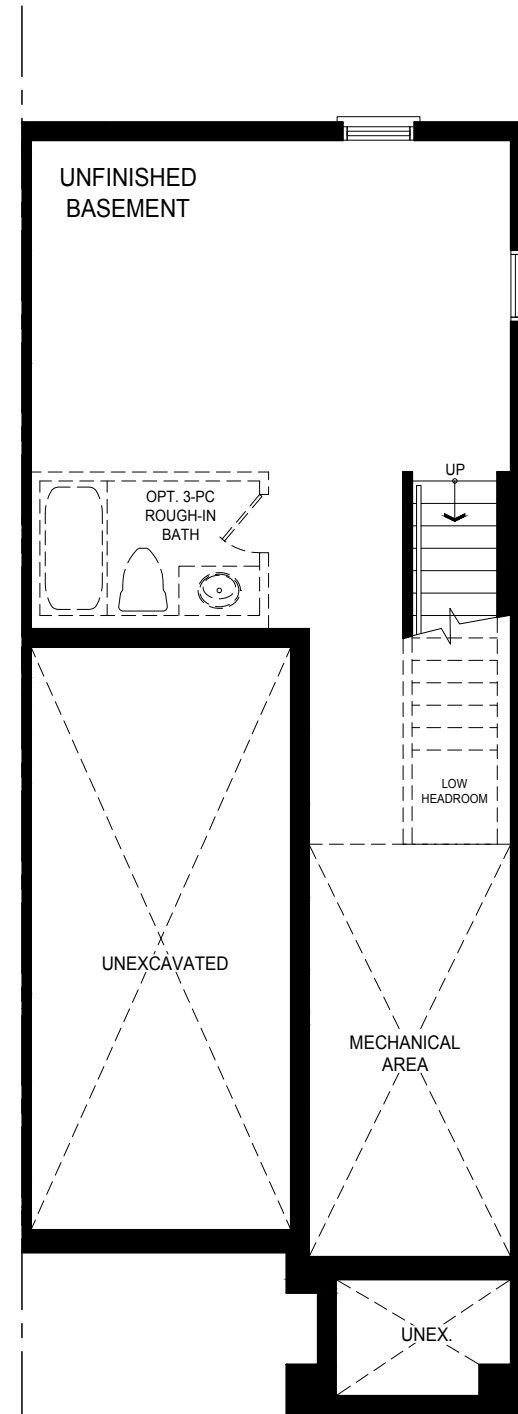


Upper Level Elev. A2

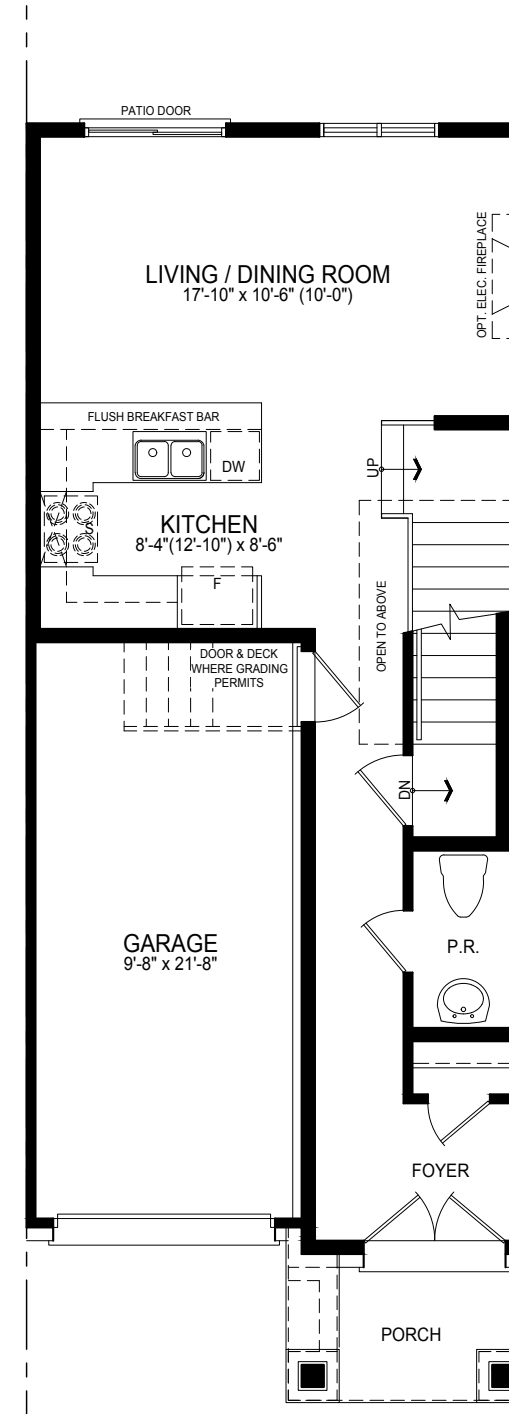
T1 END



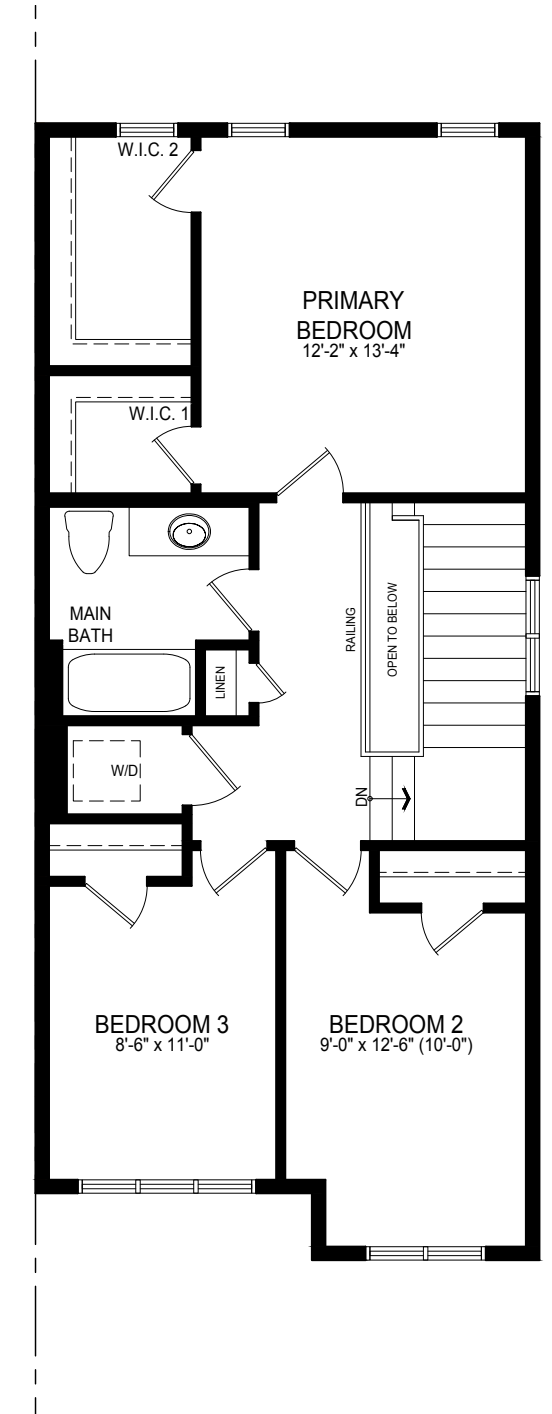
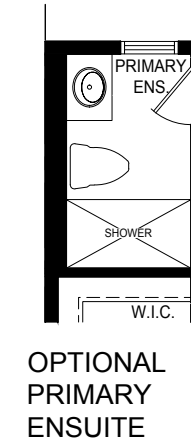
Elevation A1 1,358 sq.ft.



Basement Elev. A1



Ground Level Elev. A1



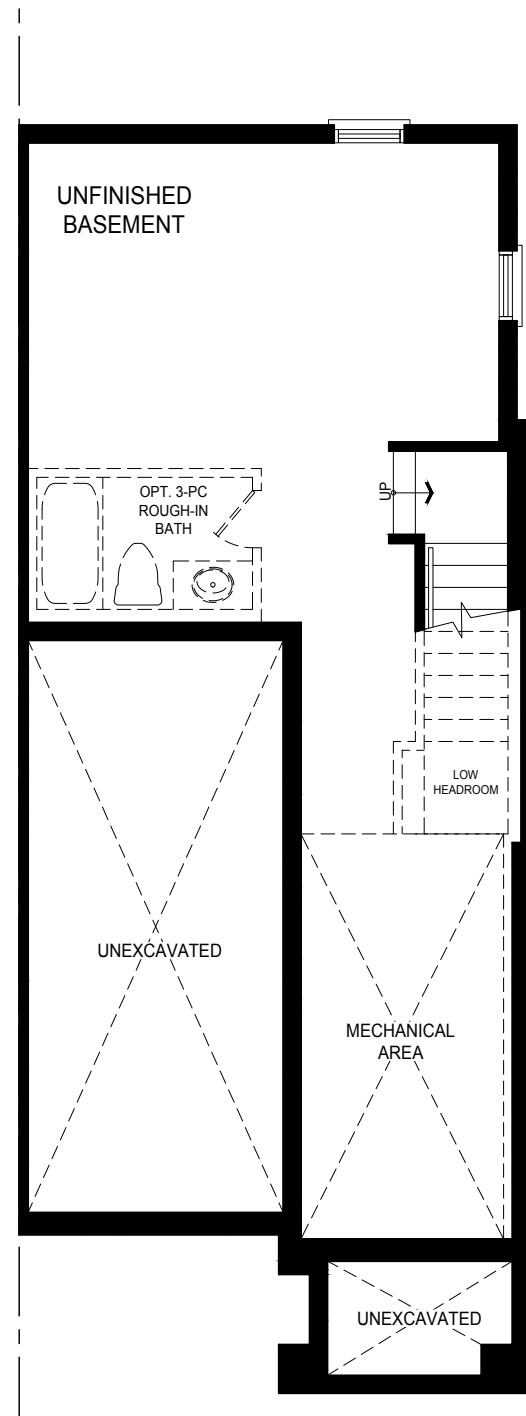
Upper Level Floor Elev. A1



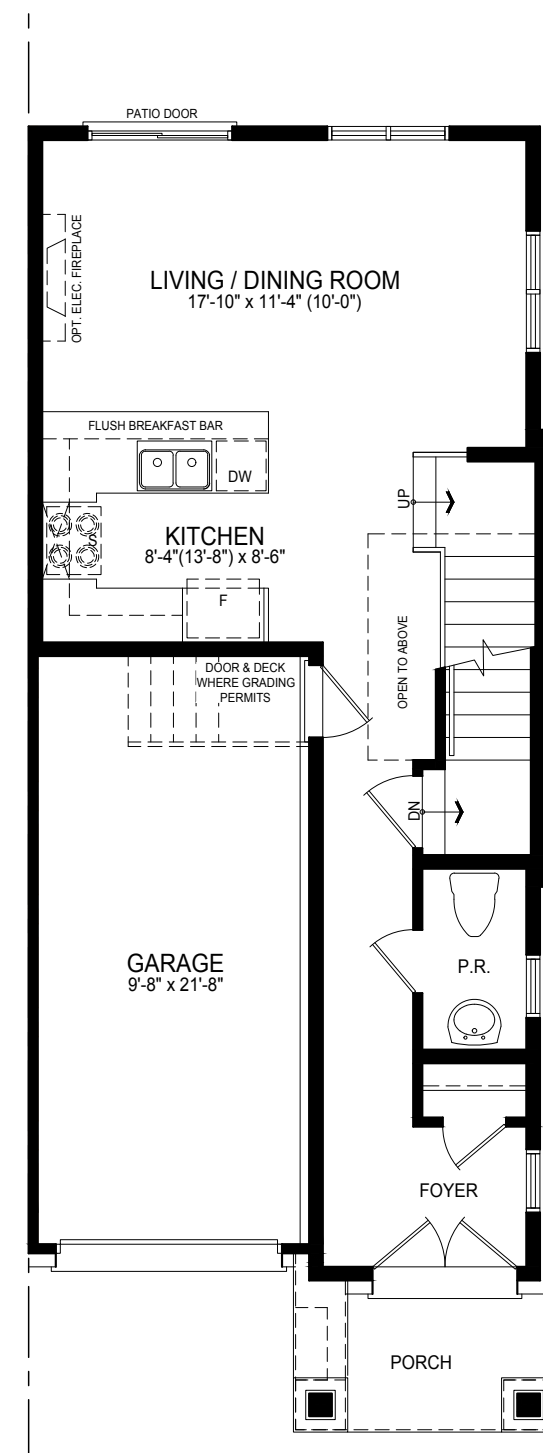
T1 CORNER



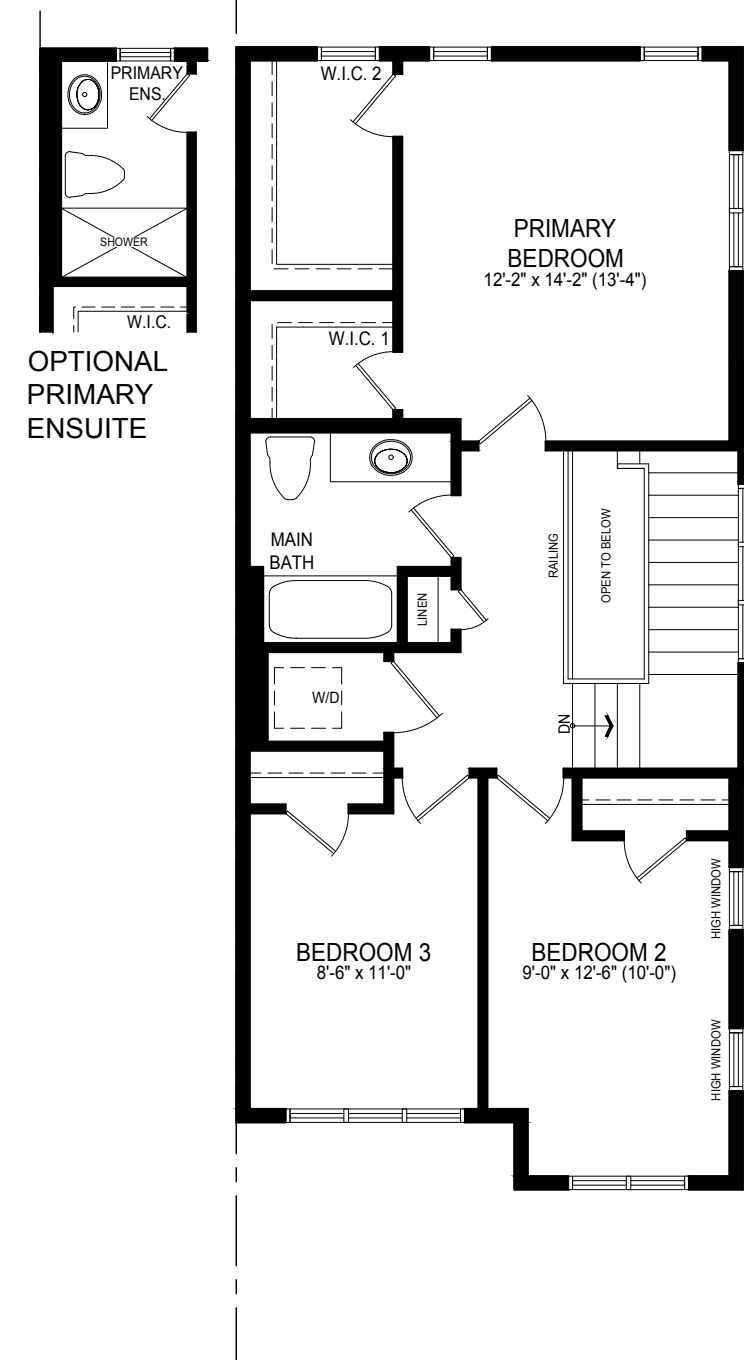
Elevation A1 1,377 sq.ft.



Basement Elev. A1



Ground Level Elev. A1



Upper Level Floor Elev. A1

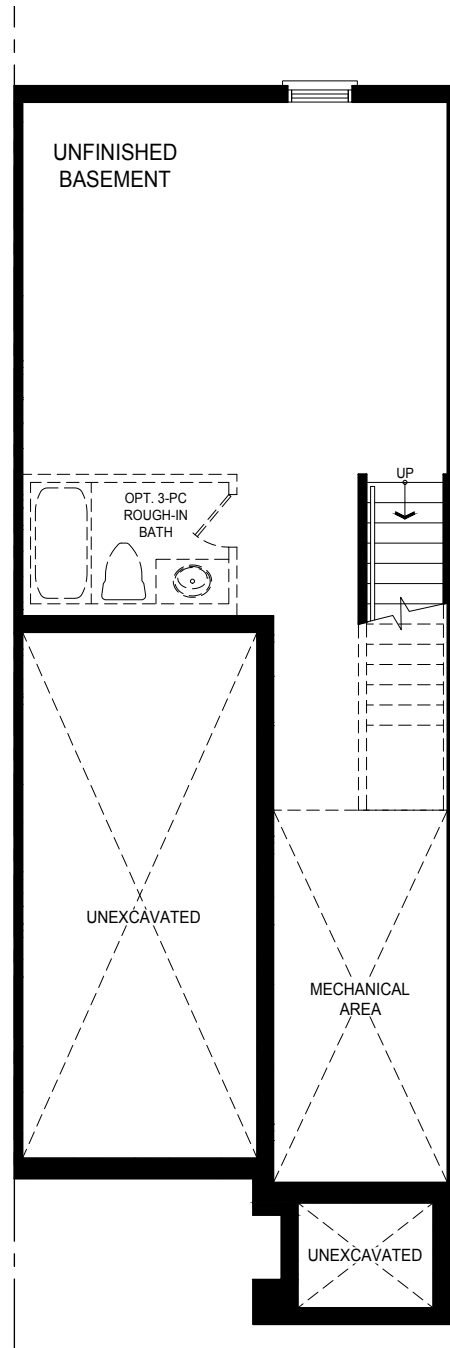
T2 INT



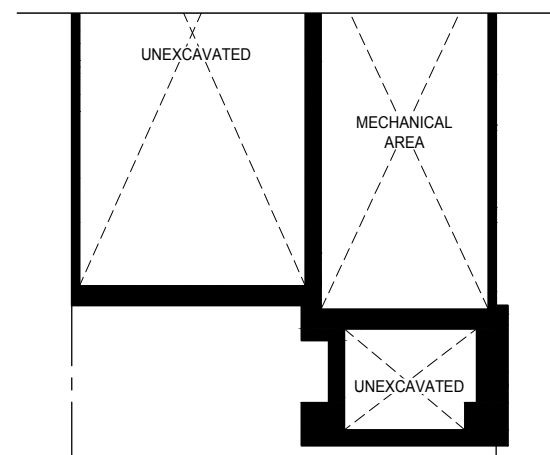
Elevation A1 1,410 sq.ft.



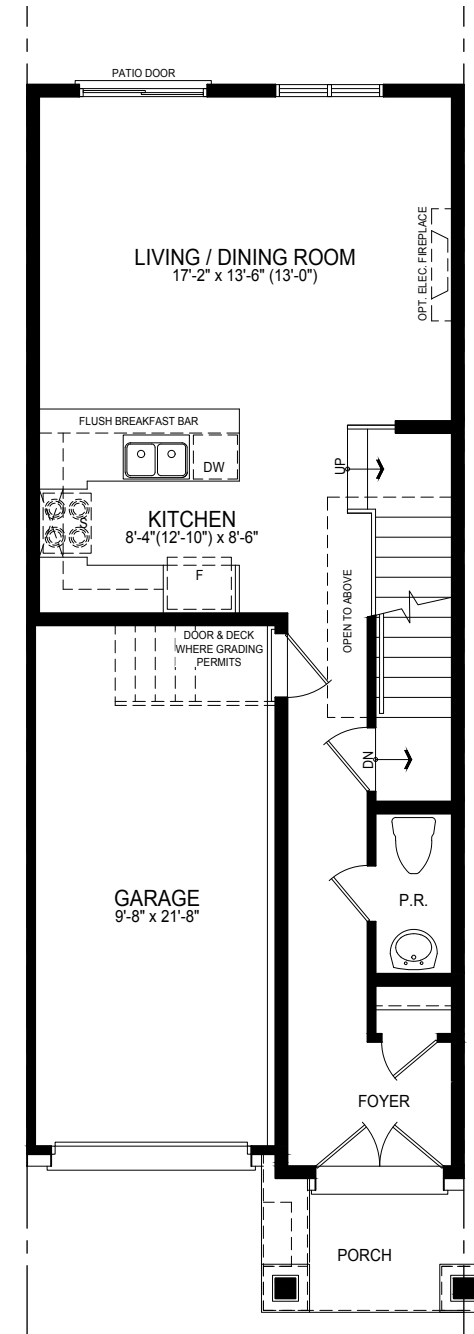
Elevation A2 1,411 sq.ft.



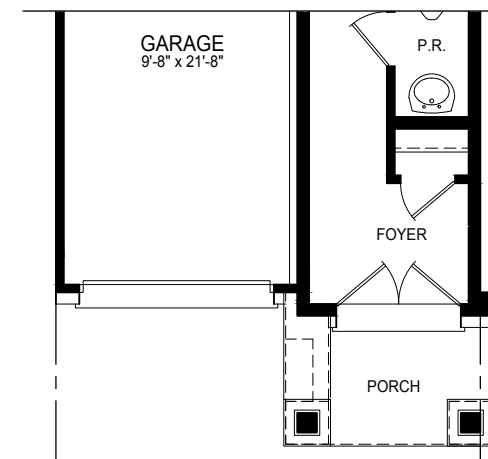
Basement Elev. A1



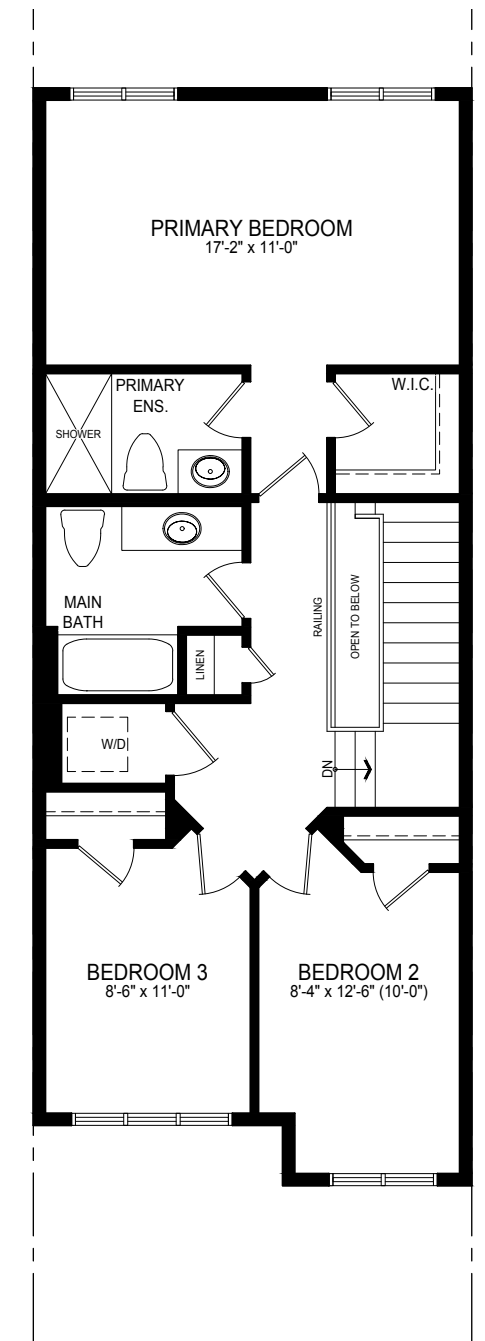
Basement Elev. A2



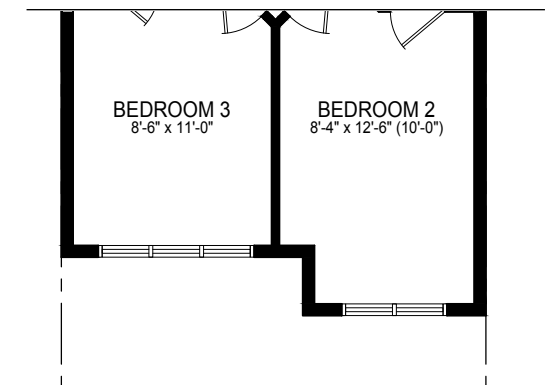
Ground Level Elev. A1



Ground Level Elev. A2



Upper Level Floor Elev. A1



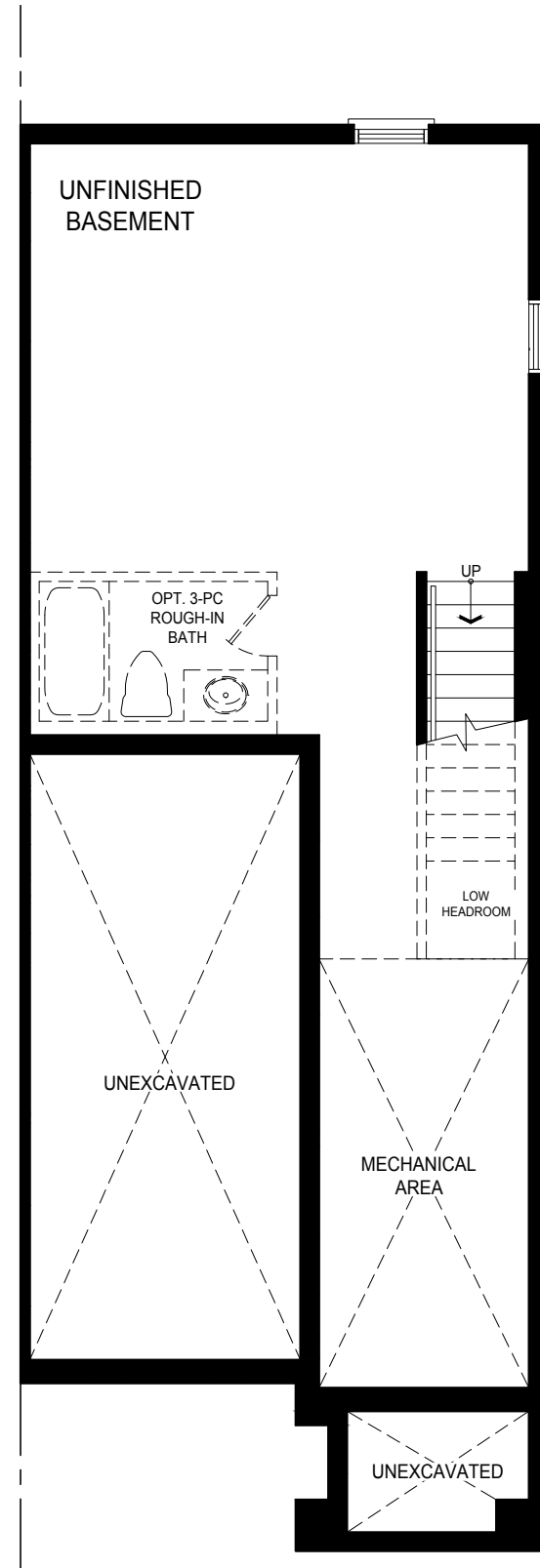
Upper Level Elev. A2



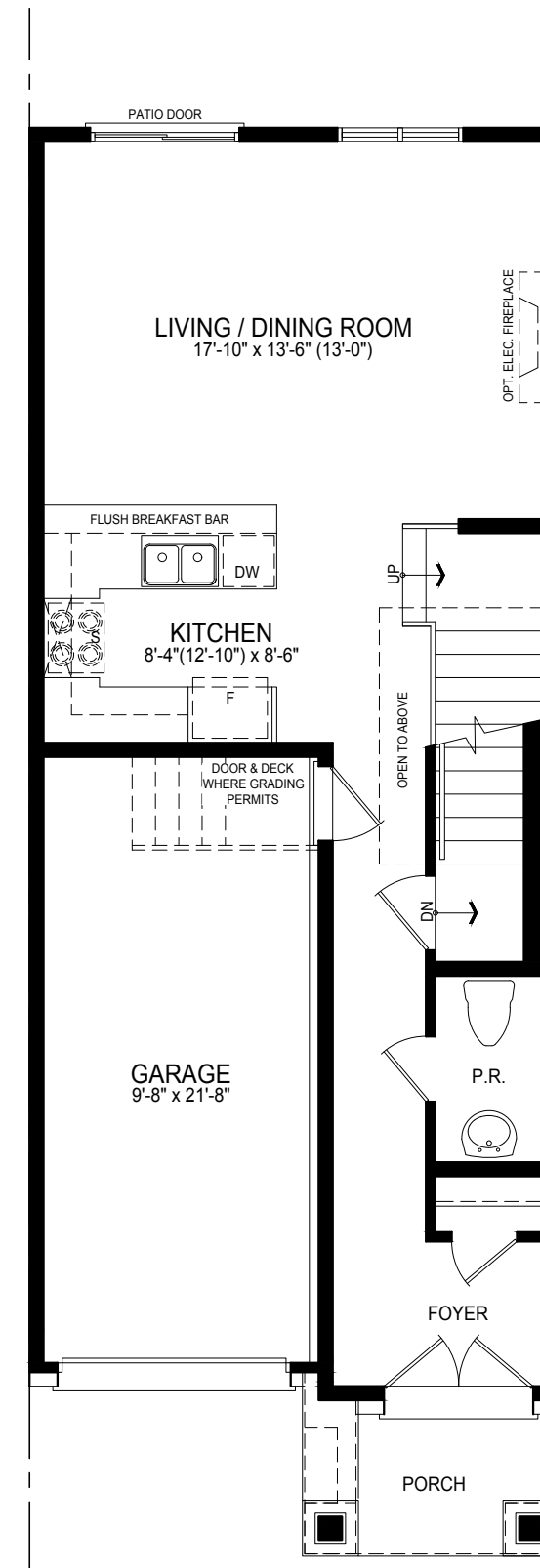
T2 END



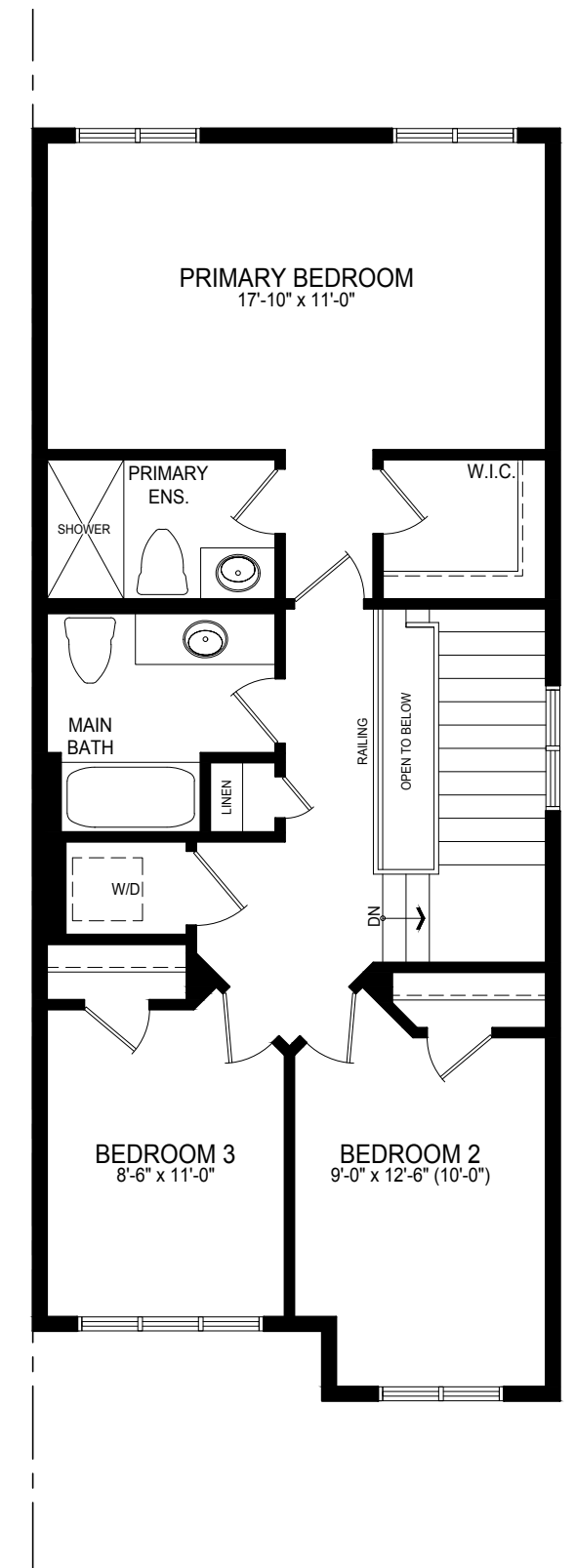
Elevation A1 1,470 sq.ft.



Basement Elev. A1



Ground Level Elev. A1

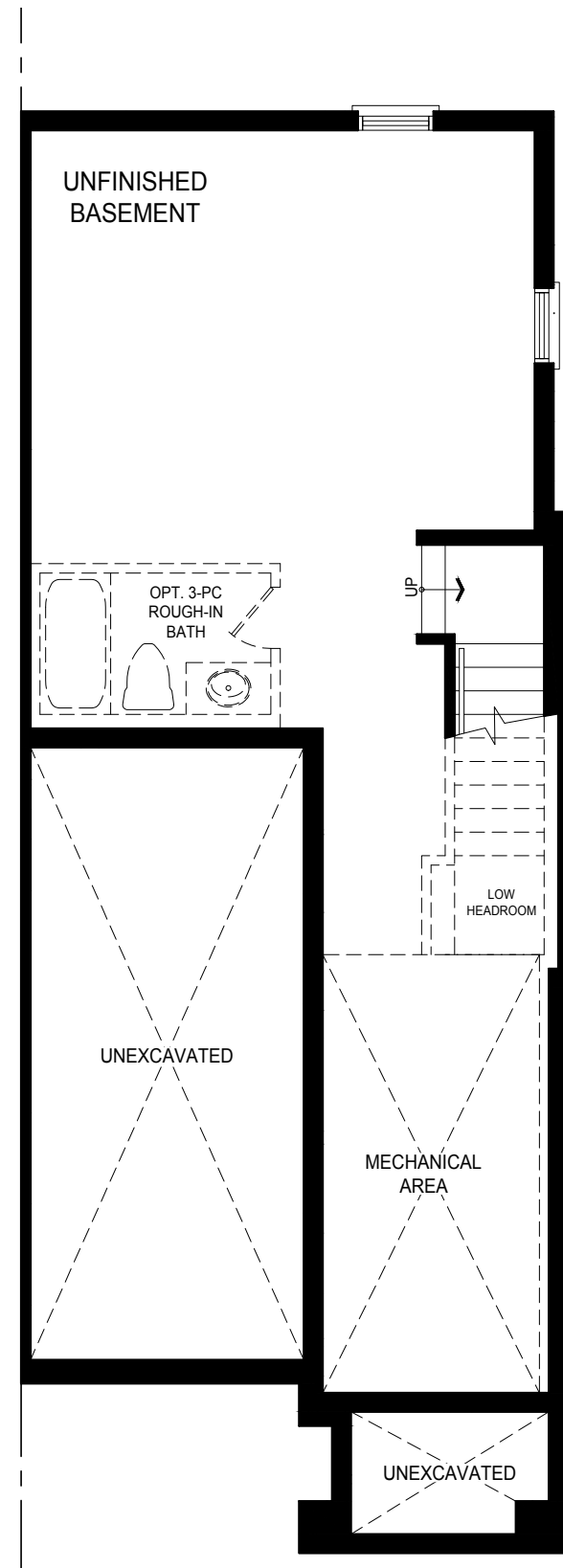


Upper Level Floor Elev. A1

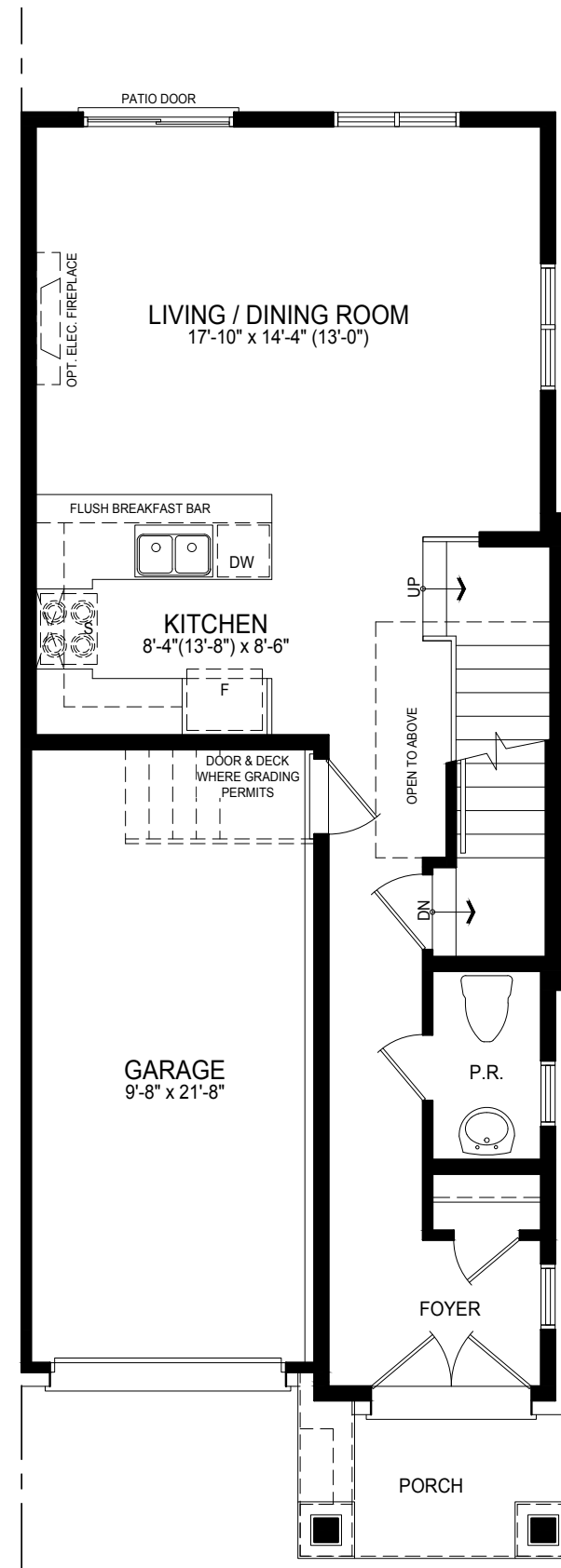
T2 CORNER



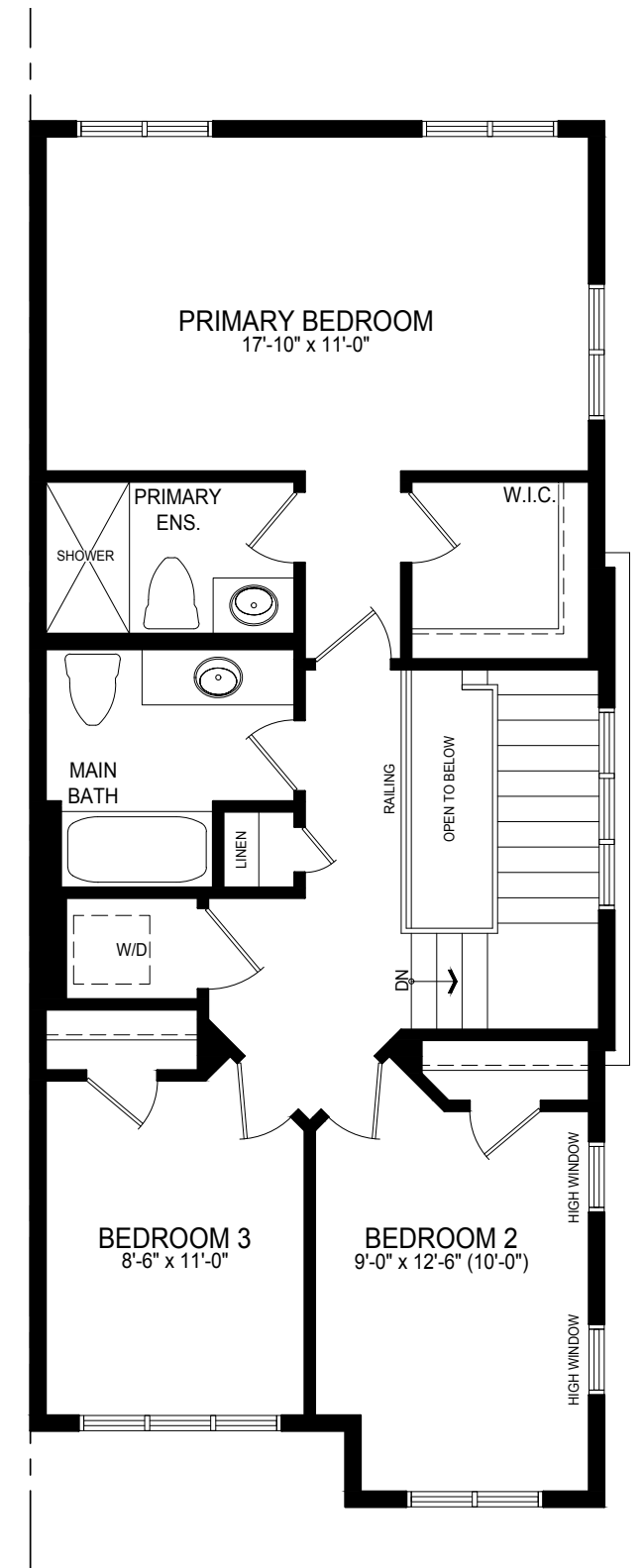
Elevation A1 1,511 sq.ft.



Basement Elev. A1



Ground Level Elev. A1



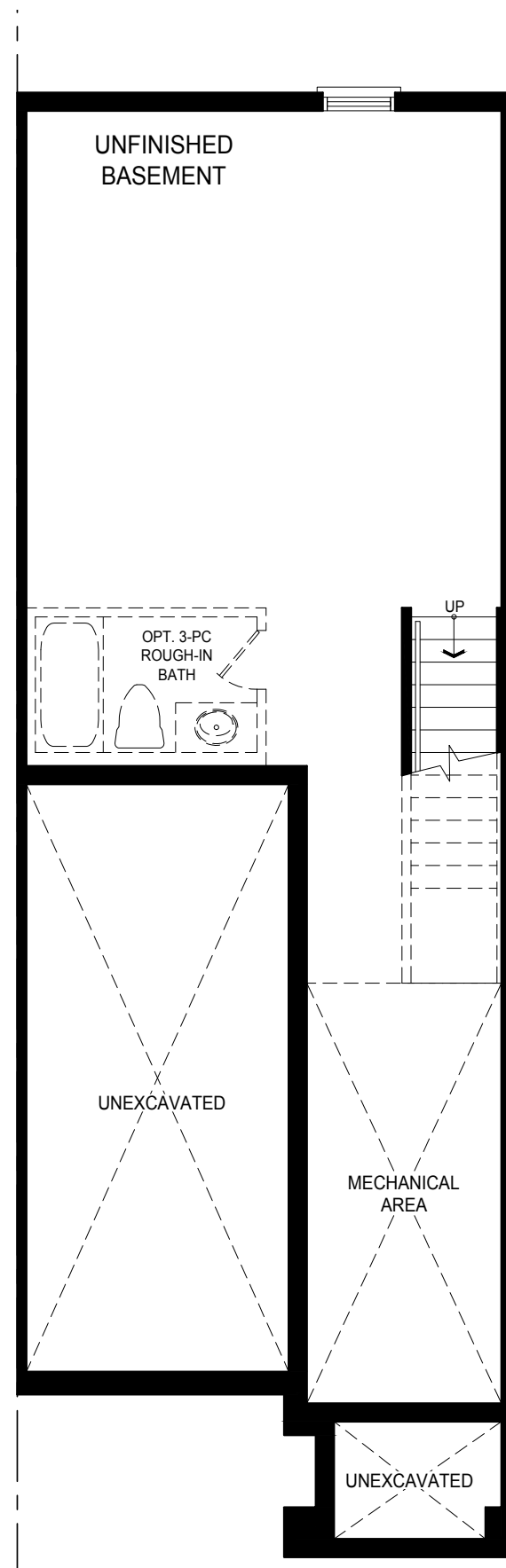
Upper Level Floor Elev. A1



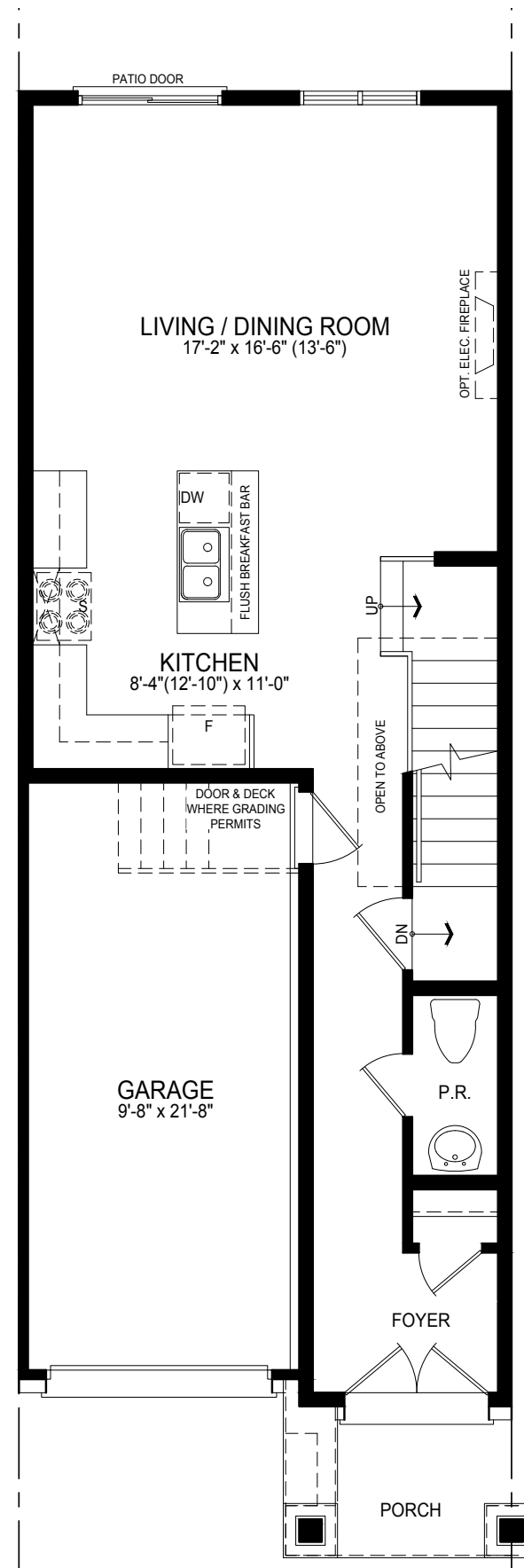
T3 INT



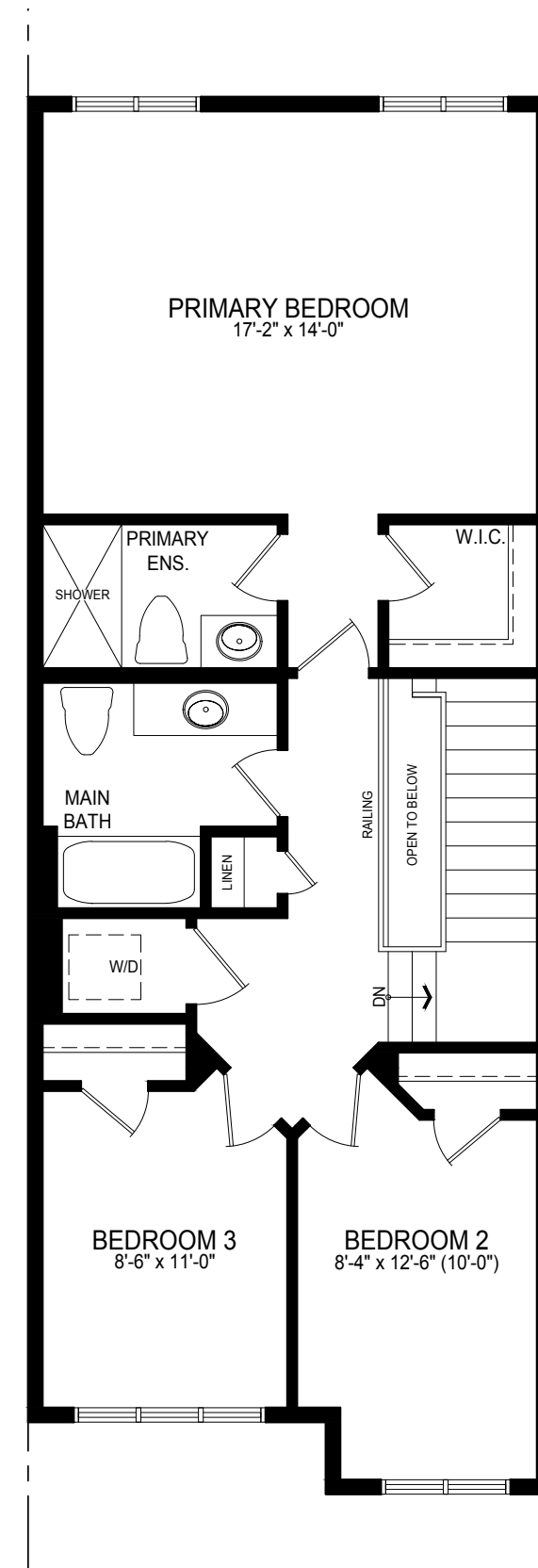
Elevation A1 1,503 sq.ft.



Basement Elev. A1



Ground Level Elev. A1

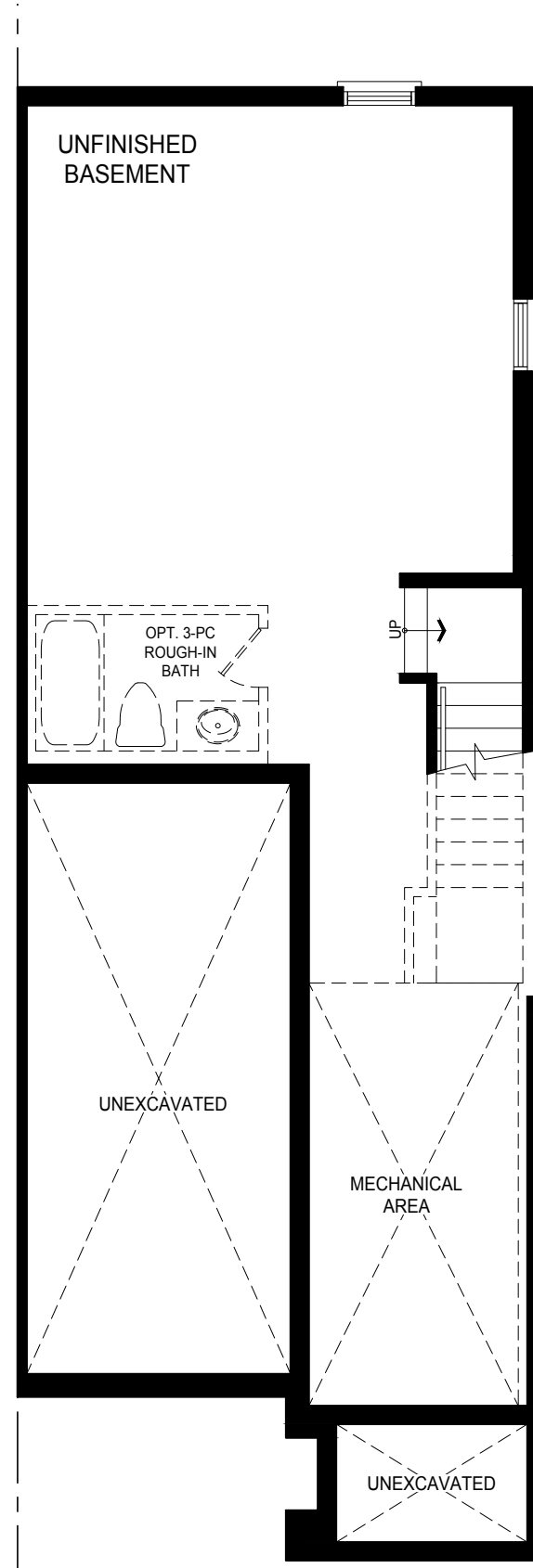


Upper Level Floor Elev. A1

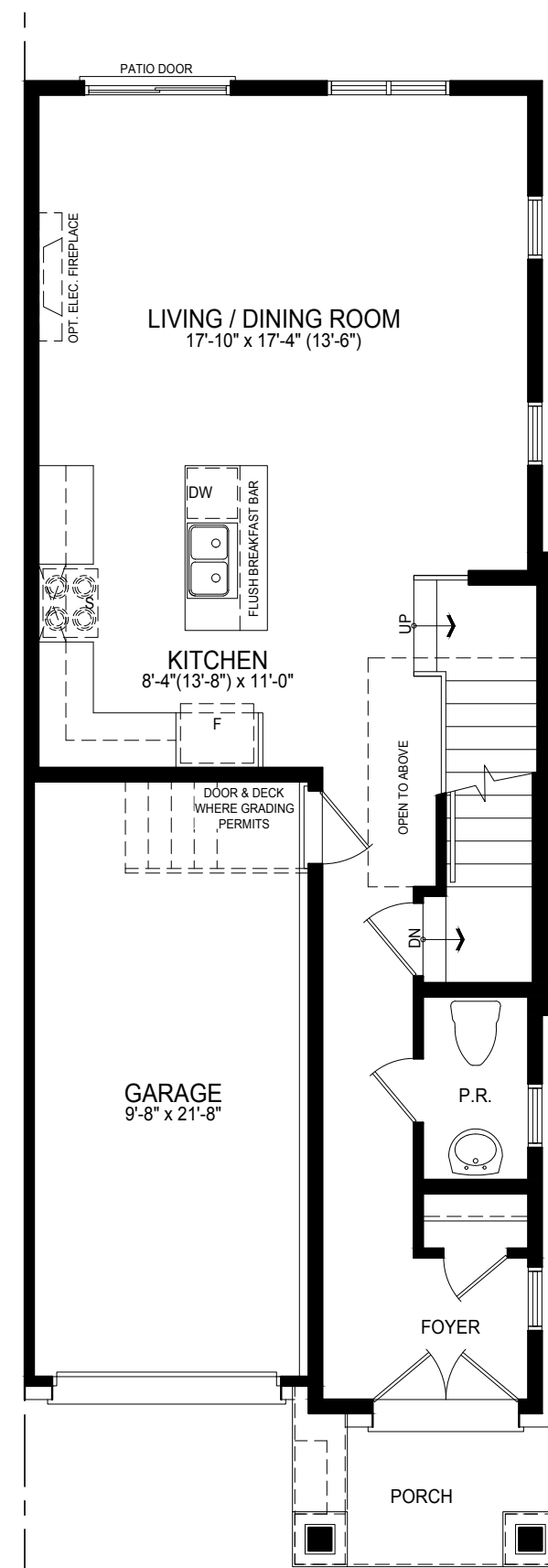
T3 CORNER



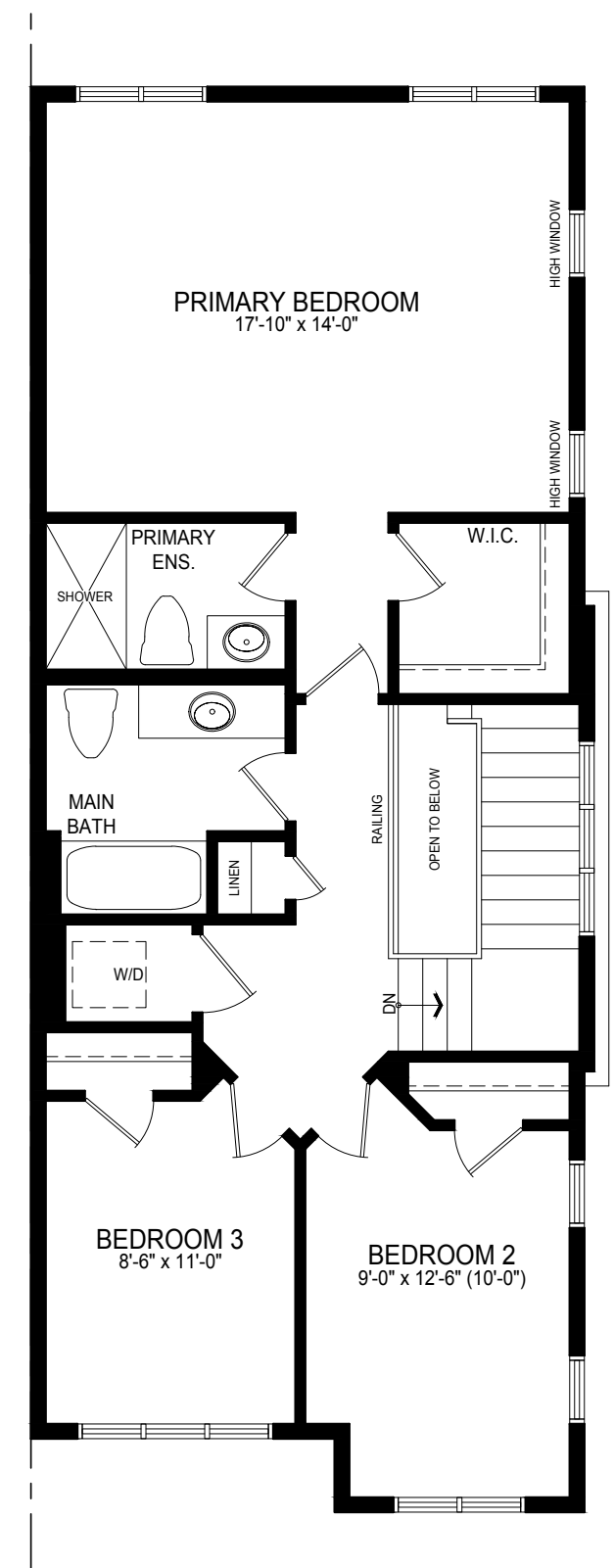
Elevation A1 1,596 sq.ft.



Basement Elev. A1



Ground Level Elev. A1



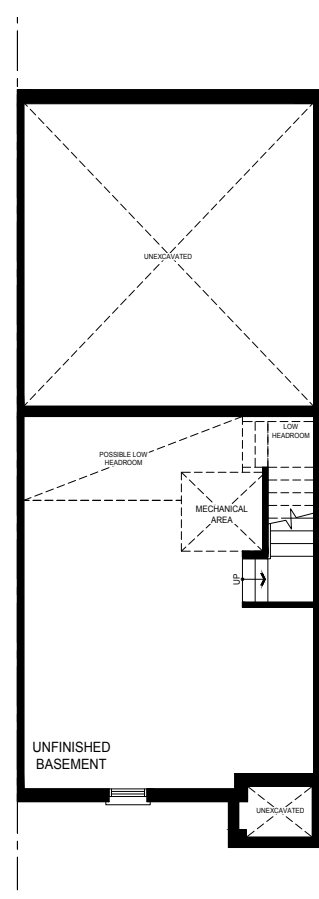
Upper Level Floor Elev. A1



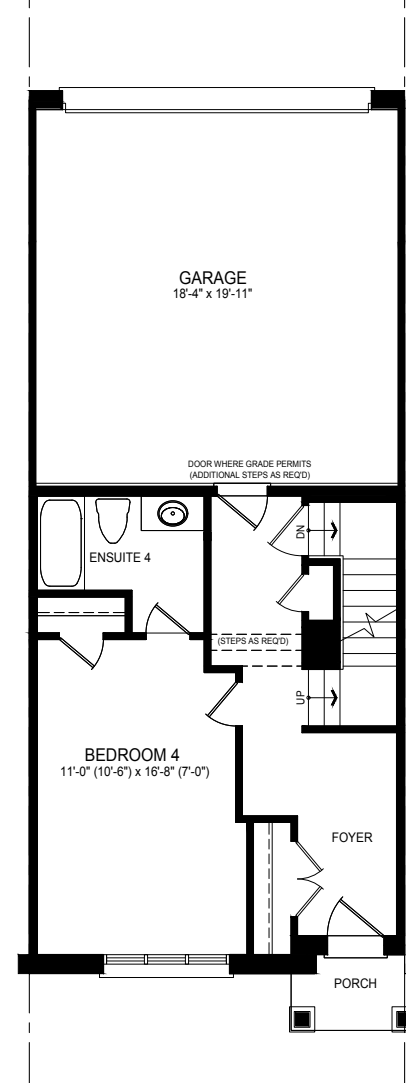
R1 INT



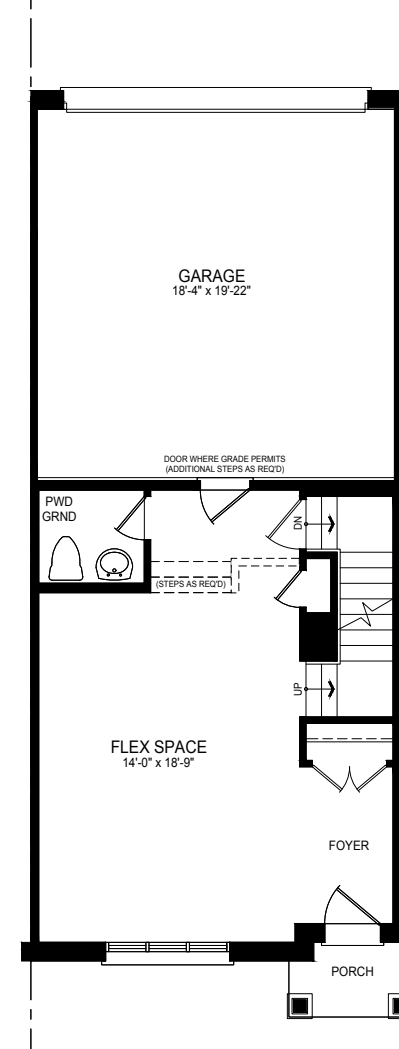
Elevation A1 1,988 sq.ft.



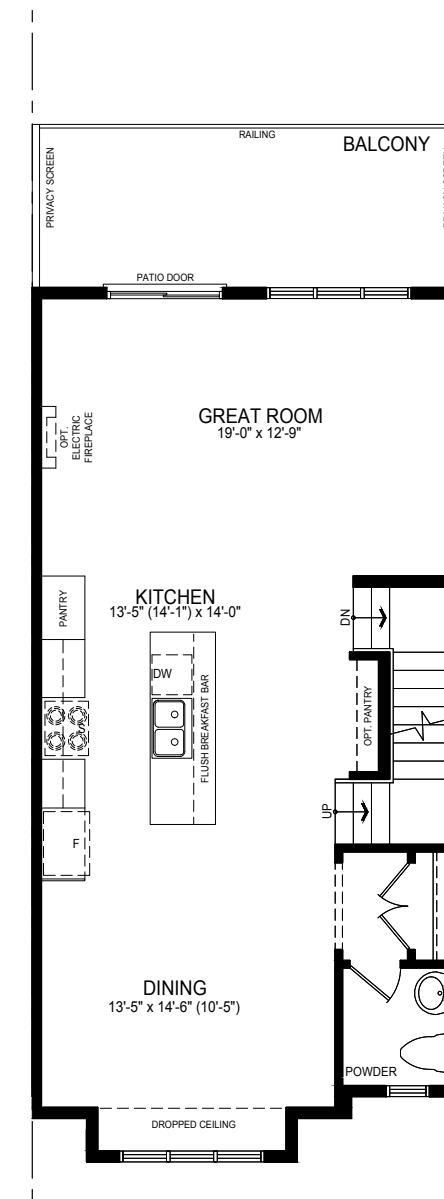
Basement Elev. A1



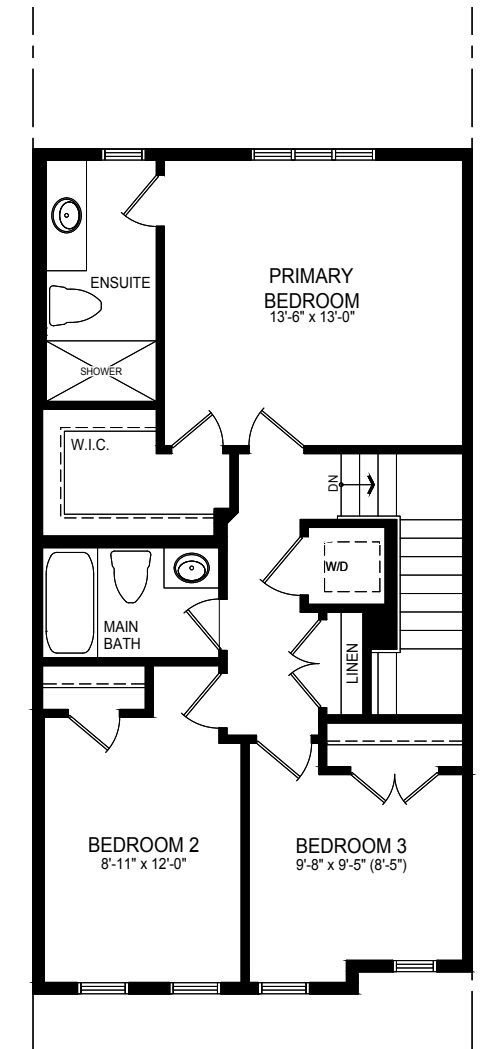
Opt. Ground Floor Elev. A1



Ground Floor Elev. A1



Main Floor Elev. A1

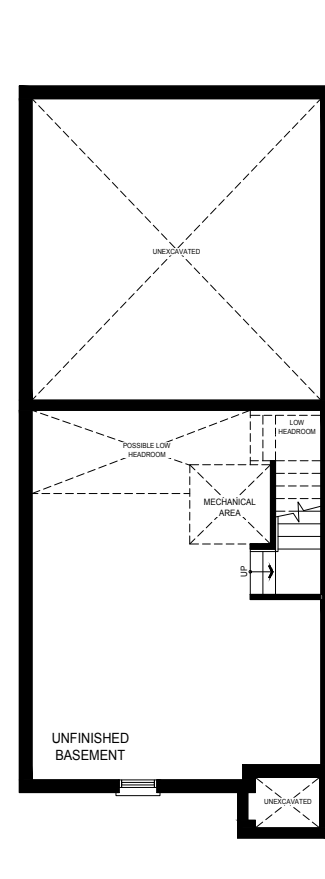


Upper Floor Elev. A1

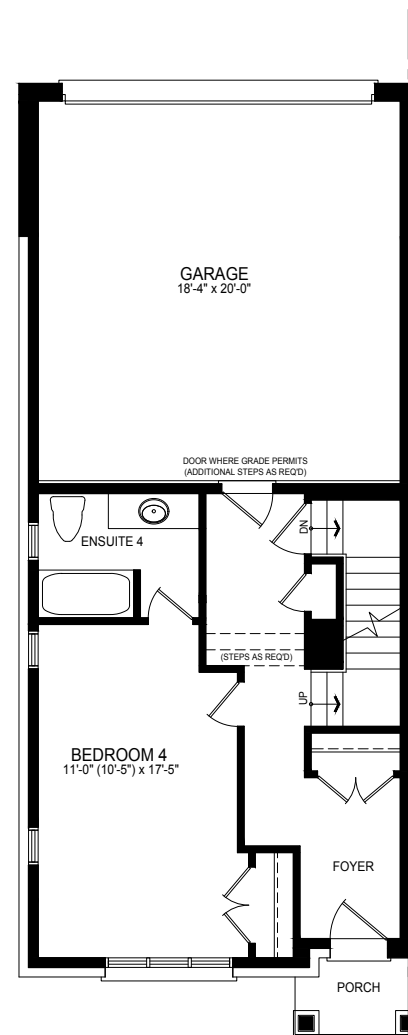
R1 END



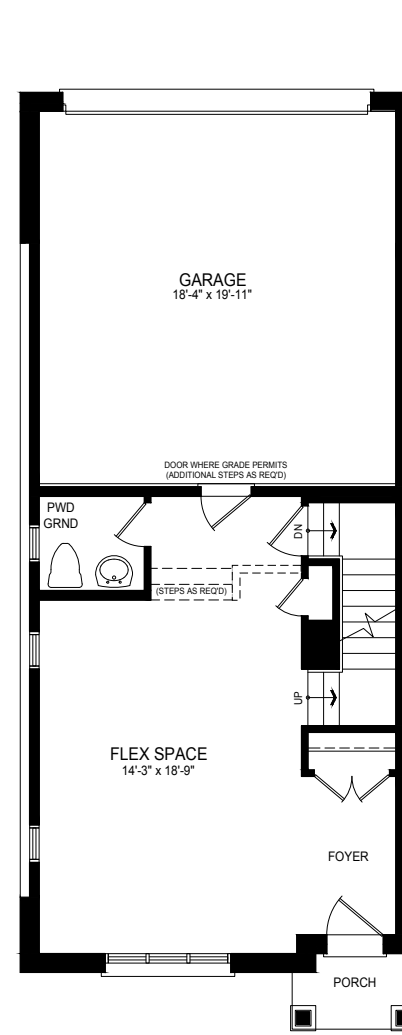
Elevation A1 2,005 sq.ft.



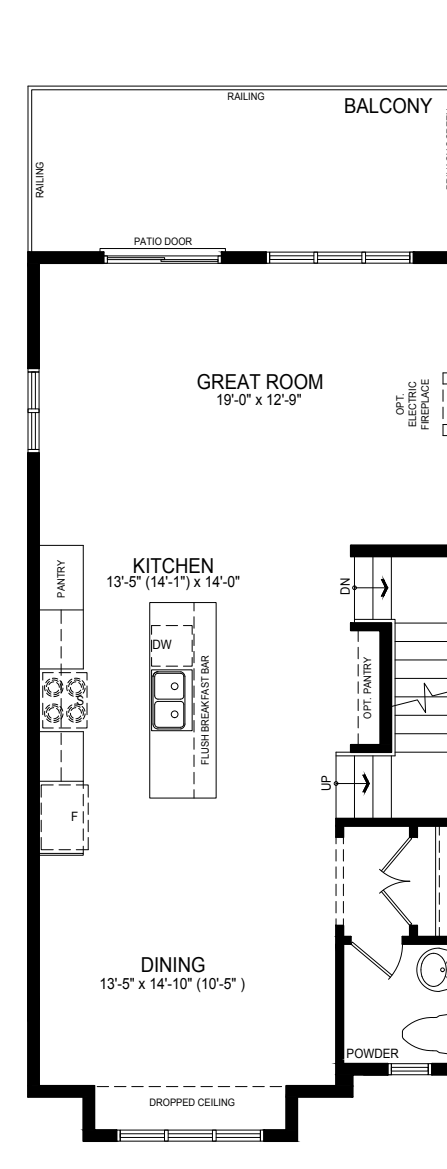
Basement Elev. A1



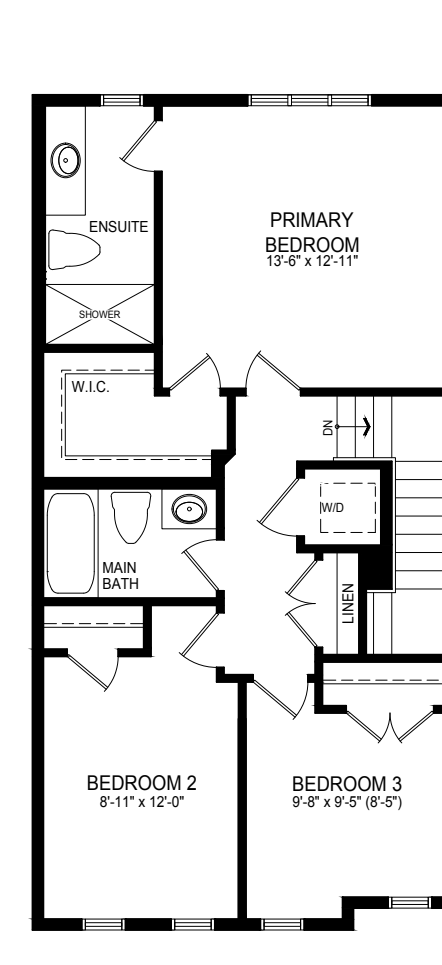
Opt. Ground Floor Elev. A1



Ground Floor Elev. A1



Main Floor Elev. A1

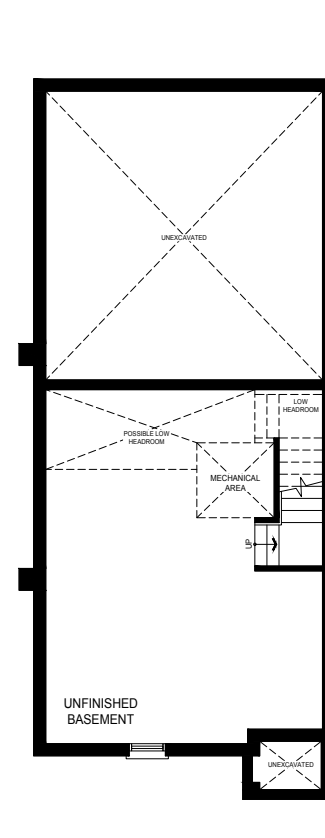


Upper Floor Elev. A1

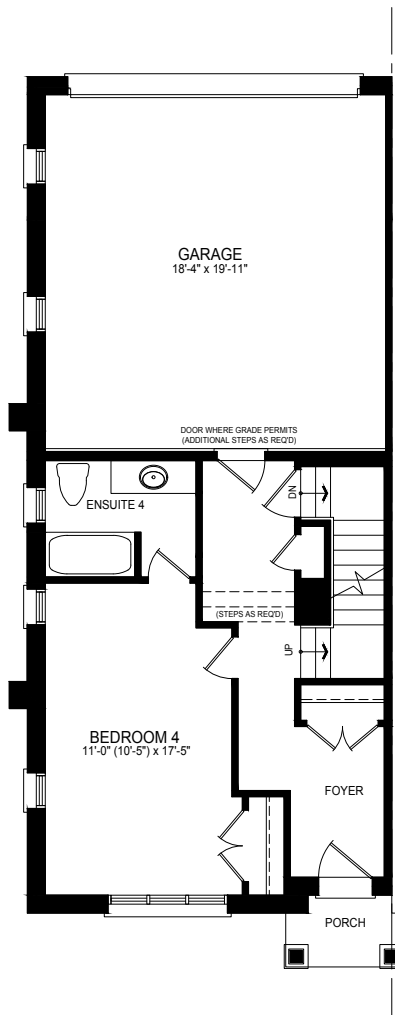
R1 CORNER



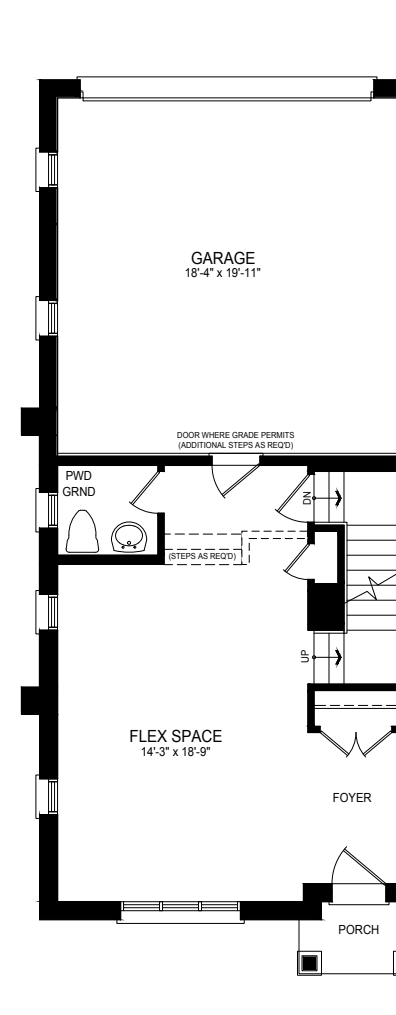
Elevation A1 2,012 sq.ft.



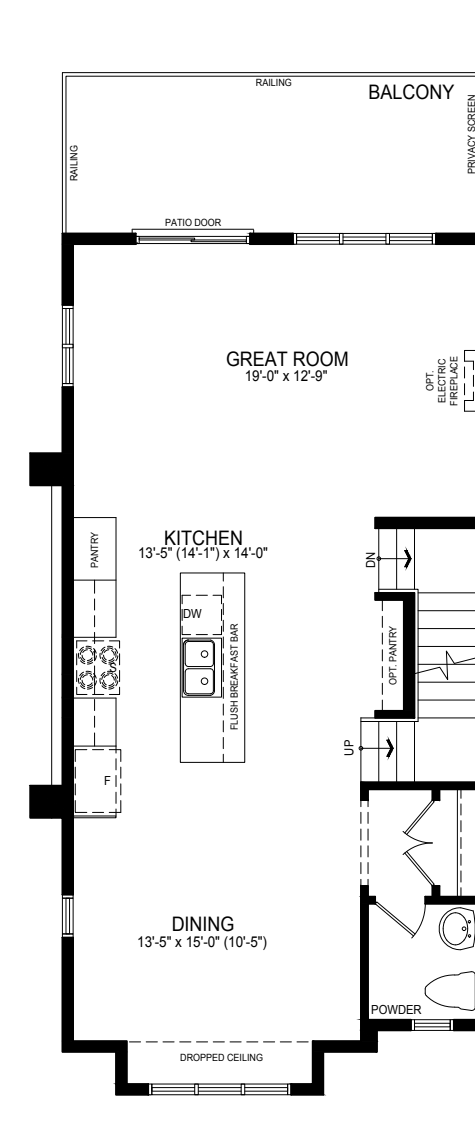
Basement Elev. A1



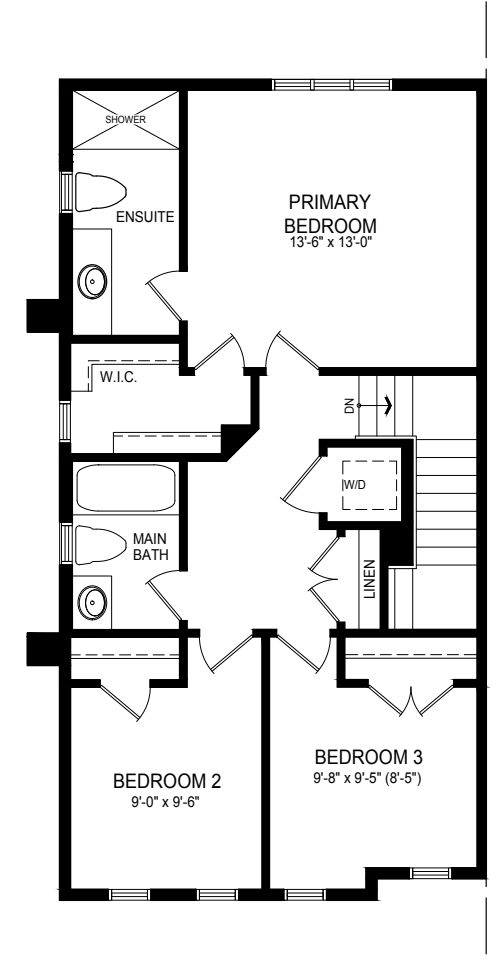
Opt. Ground Floor Elev. A1



Ground Floor Elev. A1



Main Floor Elev. A1



Upper Floor Elev. A1





## Discover Genius.

Treasure Hill's Genius™ sets a new benchmark for smart home features. Every home at Queensbrook comes with several standard smart features designed to enhance your home's function and your comfort. From advanced home automation systems to energy-efficient design, Genius™ homes are built for the modern homeowner who values both form and function.

TREASURE HILL BUILDS THE  
FINEST QUALITY NEW HOMES  
WITH ONLY THE BEST MATERIALS  
& SUPERIOR CRAFTSMANSHIP



TREASURE HILL

Treasure Hill is an award-winning builder that builds the finest quality new homes with the best materials and superior craftsmanship.

Every Treasure Hill home combines many elements: an impressive floor plan, quality construction, great value, a convenient location, and most of all, a feeling that this is a place you'll want to call home.

