

# THE SOLUS COLLECTION

## SOLUS II

A 2,082 SQ.FT. B 2,134 SQ.FT. C 2,124 SQ.FT.



ELEVATION C



ELEVATION A

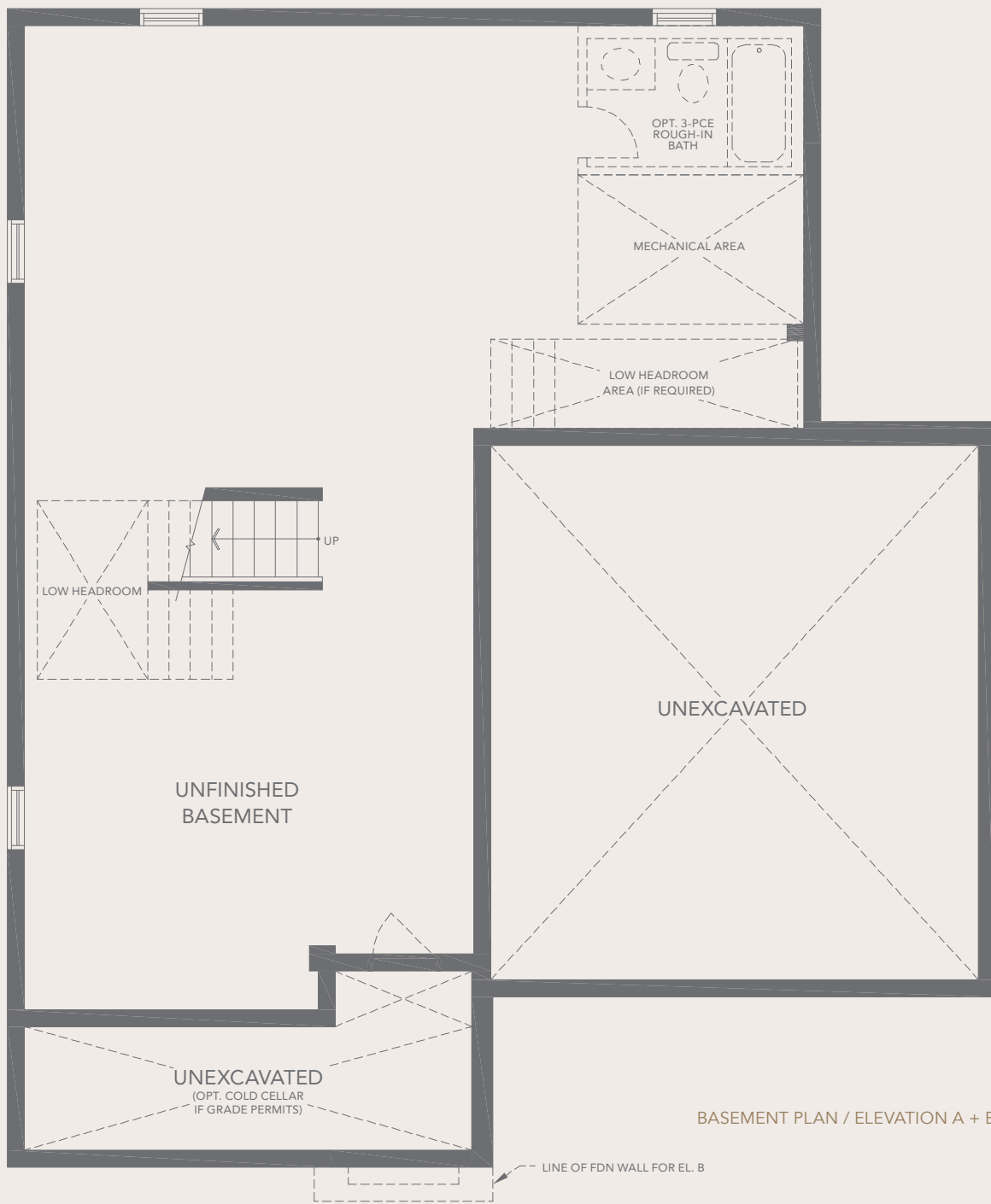


ELEVATION B

JSD HOMES  
647-403-7253

AMIRA

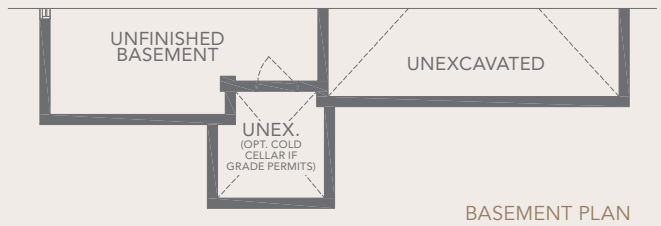
# SOLUS II (45-11) A 2,082 SQ.FT. B 2,134 SQ.FT. C 2,124 SQ.FT.



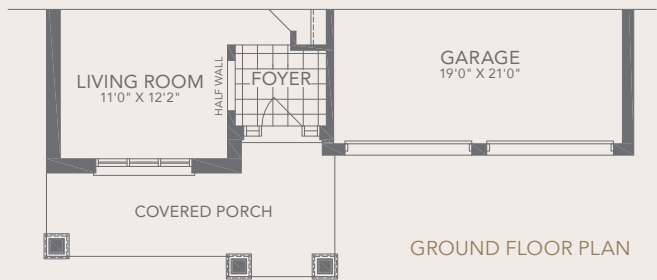
BASEMENT PLAN / ELEVATION A + B

ELEVATION B

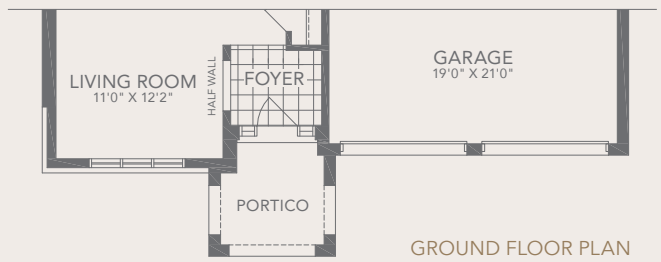
ELEVATION C



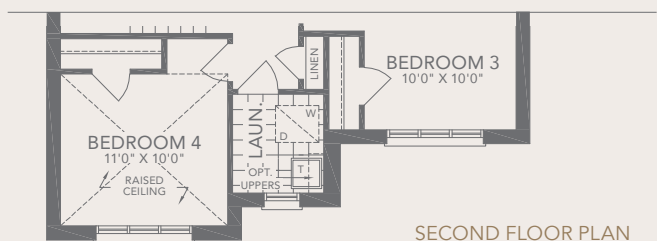
BASEMENT PLAN



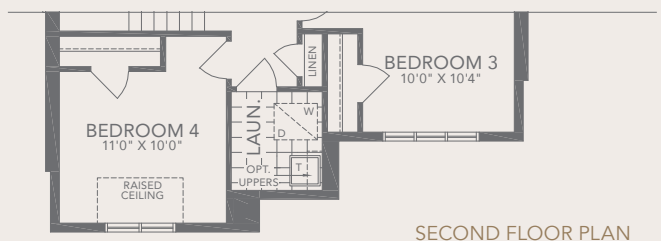
GROUND FLOOR PLAN



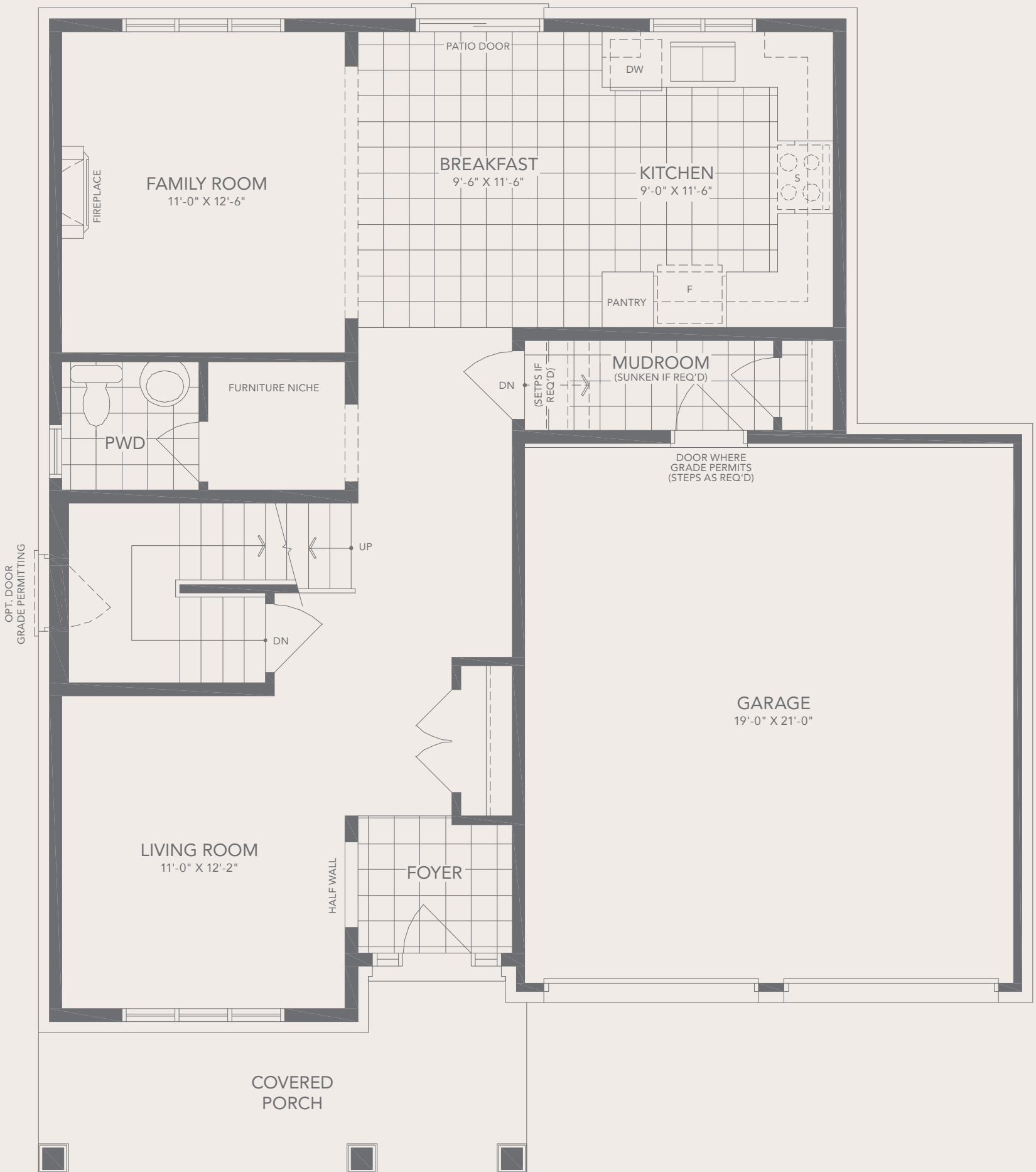
GROUND FLOOR PLAN



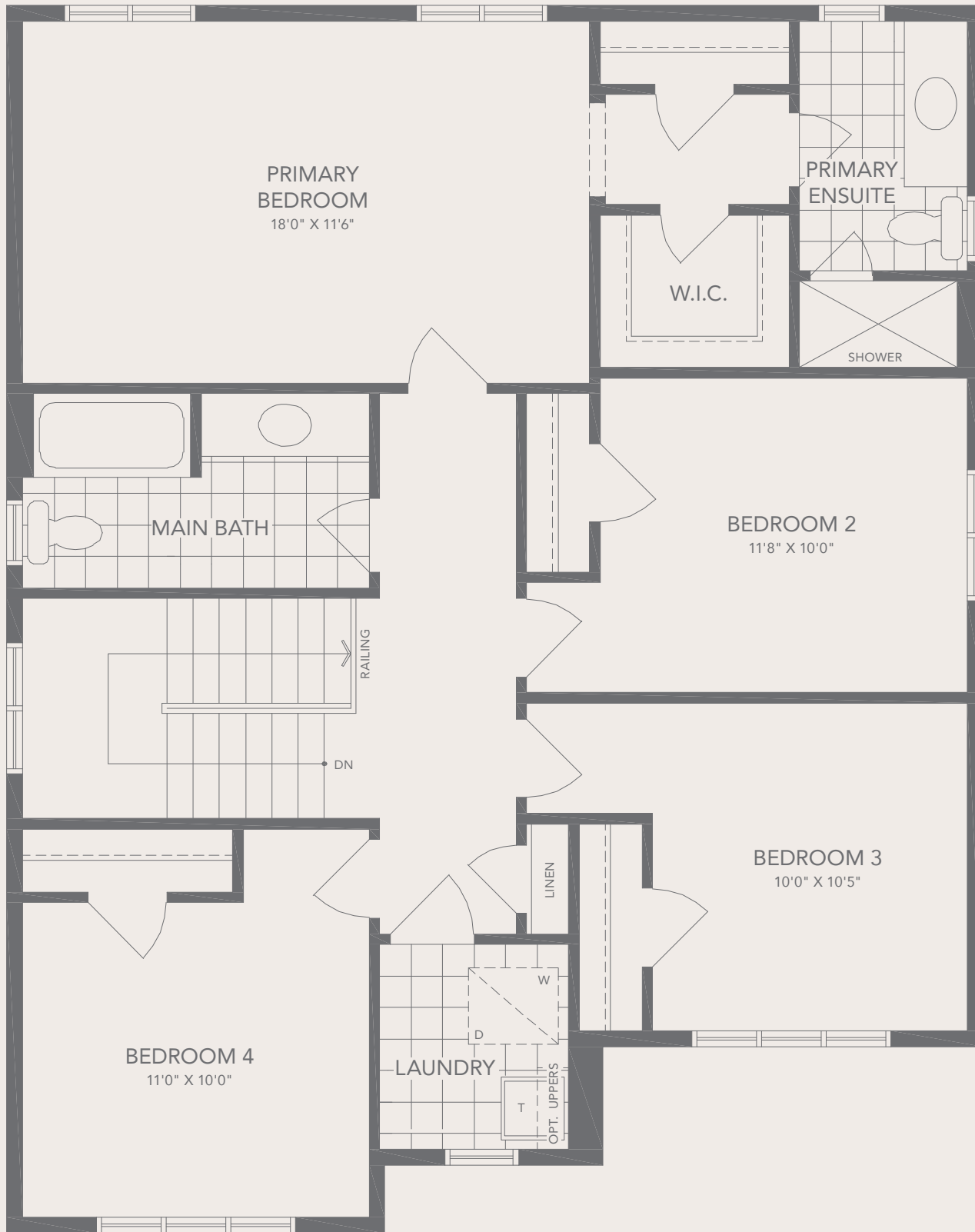
SECOND FLOOR PLAN



SECOND FLOOR PLAN



GROUND FLOOR PLAN ELEVATION A



SECOND FLOOR PLAN ELEVATION A

All dimensions are approximate. Information subject to change without notice. The square footage is calculated from the outside dimension of the building on the first and second floor and includes the finished area of the basement if applicable. Garages, attics and unfinished area in the basement are not included in calculations. Basement columns, water heater and furnace are not shown and will be placed based on builder's requirements. Number of steps and railings provided may vary due to grade. Windows vary as per elevation. Actual useable floor space may vary from the stated floor area. Renderings are artist's concept. E.&O.E. - D.O.P. 2024.

# THE SOLUS COLLECTION

## SOLUS 1

**A** 2,538 SQ.FT. **B** 2,627 SQ.FT. **C** 2,613 SQ.FT.  
Includes 6 SQ.FT. Open Area



ELEVATION C



ELEVATION A



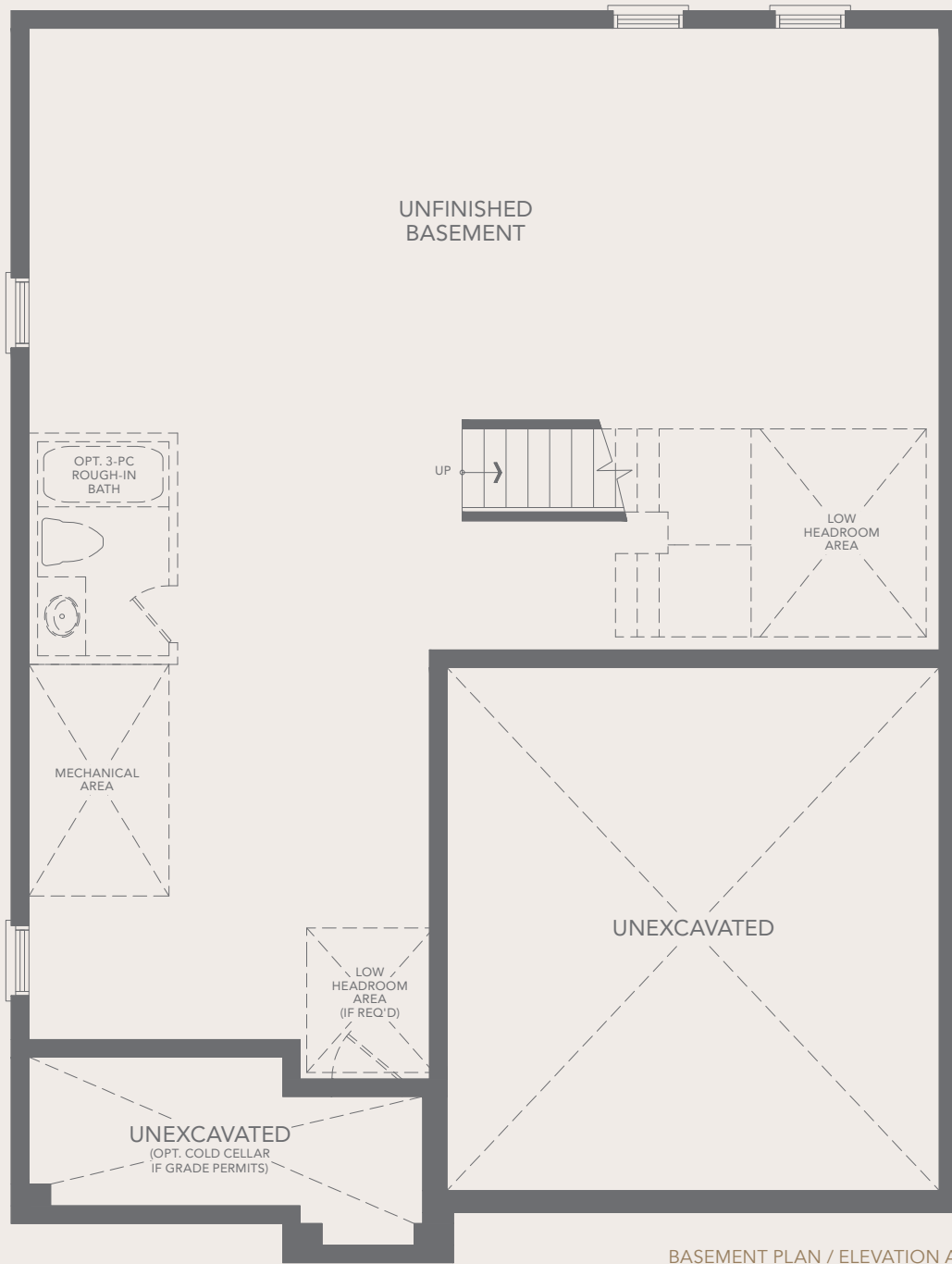
ELEVATION B

AMIRA

# SOLUS 1

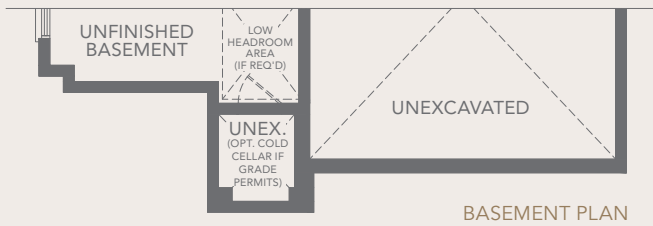
(45-1) A 2,538 SQ.FT. B 2,627 SQ.FT. C 2,613 SQ.FT.

Includes 6 SQ.FT. Open Area

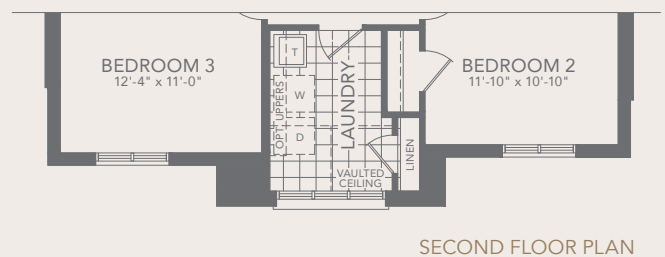
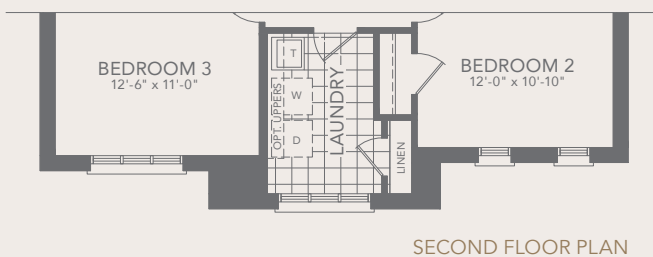
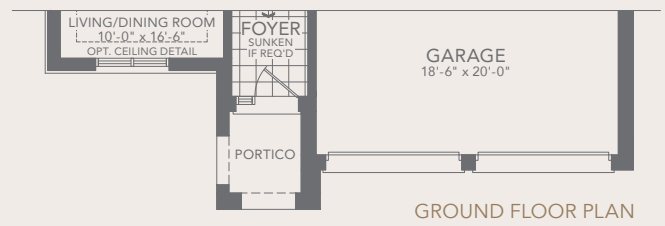
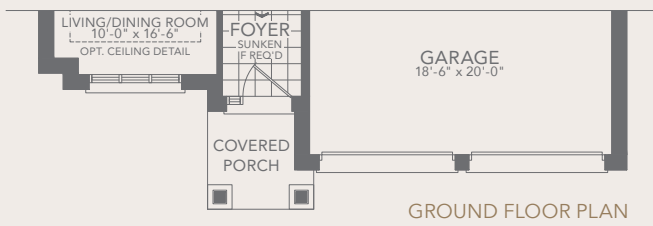
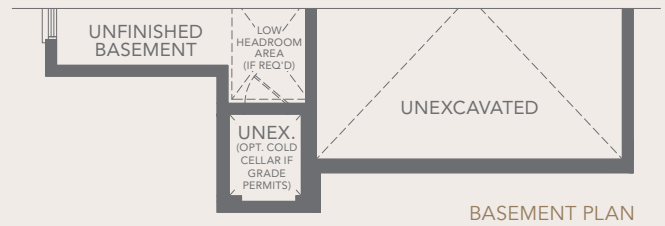


BASEMENT PLAN / ELEVATION A

ELEVATION B

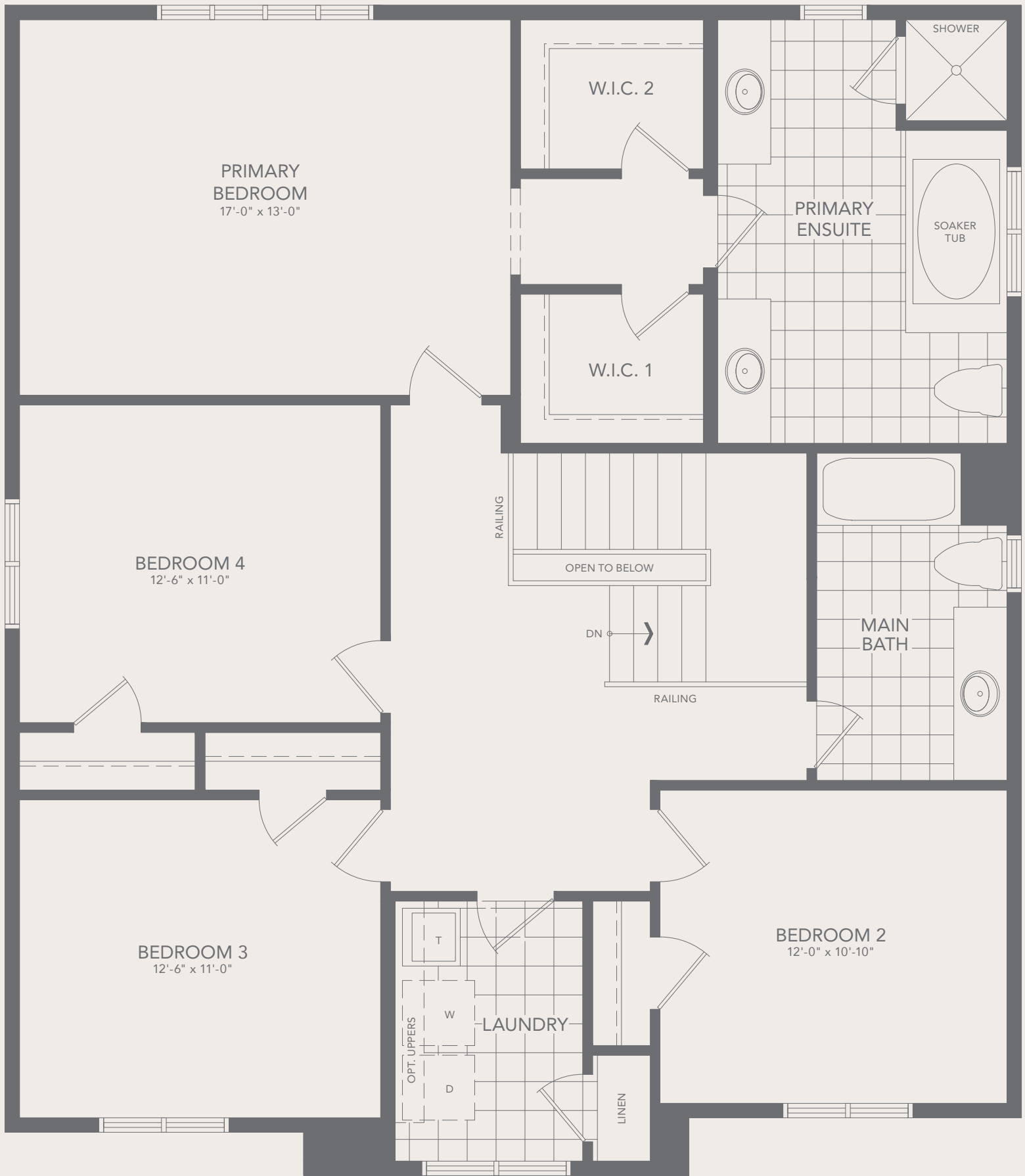


ELEVATION C





GROUND FLOOR PLAN ELEVATION A



SECOND FLOOR PLAN ELEVATION A

All dimensions are approximate. Information subject to change without notice. The square footage is calculated from the outside dimension of the building on the first and second floor and includes the finished area of the basement if applicable. Garages, attics and unfinished area in the basement are not included in calculations. Basement columns, water heater and furnace are not shown and will be placed based on builder's requirements. Number of steps and railings provided may vary due to grade. Windows vary as per elevation. Actual useable floor space may vary from the stated floor area. Renderings are artist's concept. E.&O.E. - D.O.P. 2024.



# THE SOLUS COLLECTION

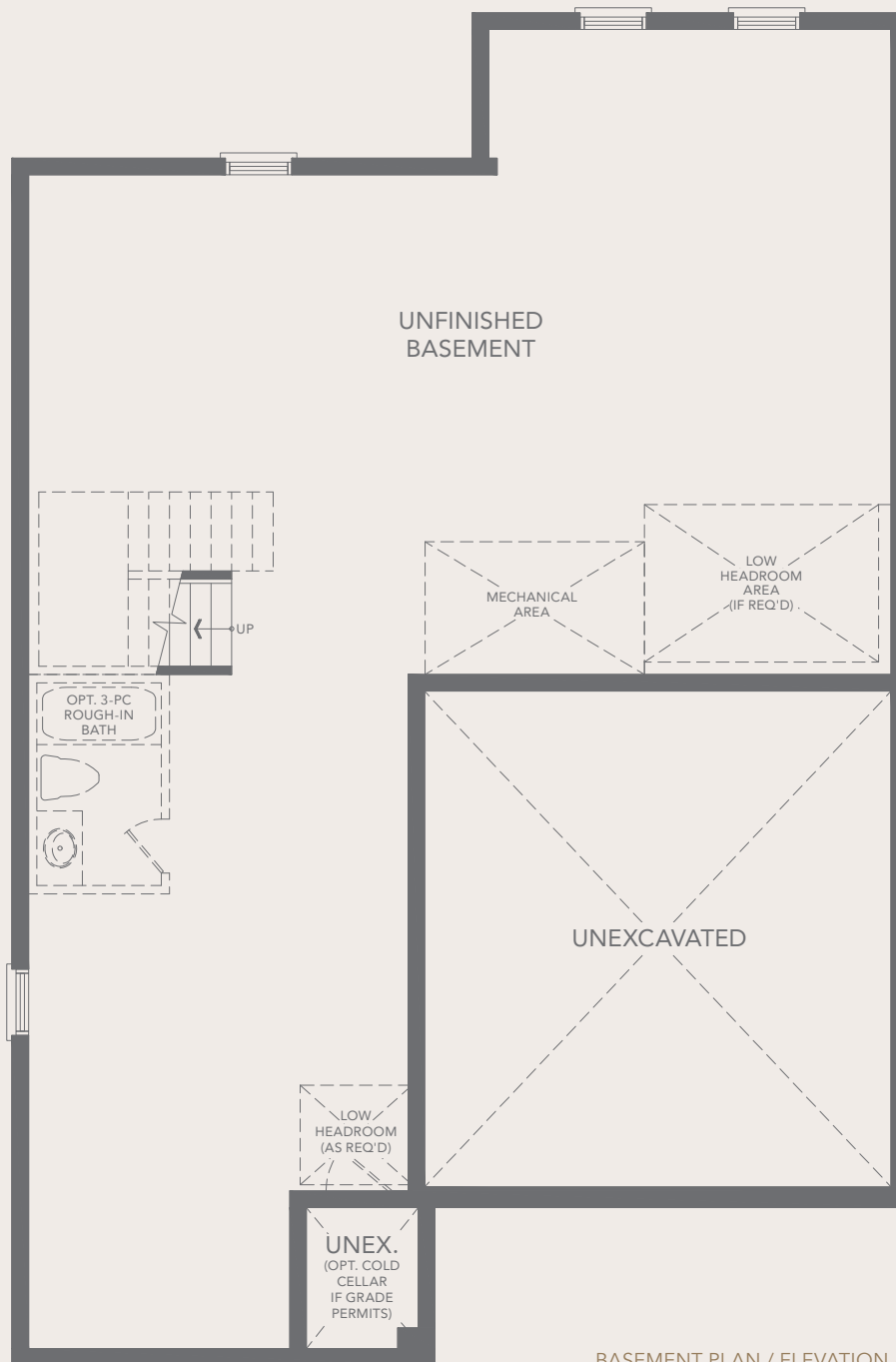
## SOLUS 2

A 2,750 SQ.FT. B 2,822 SQ.FT. C 2,811 SQ.FT.



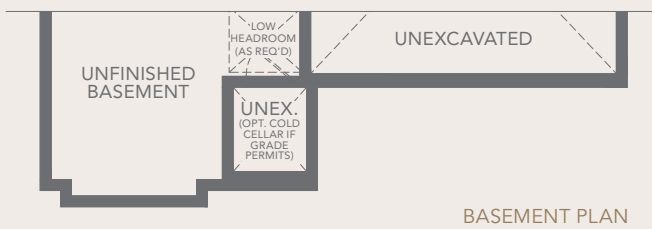
AMIRA

# SOLUS 2 (45-2) A 2,750 SQ.FT. B 2,822 SQ.FT. C 2,811 SQ.FT.

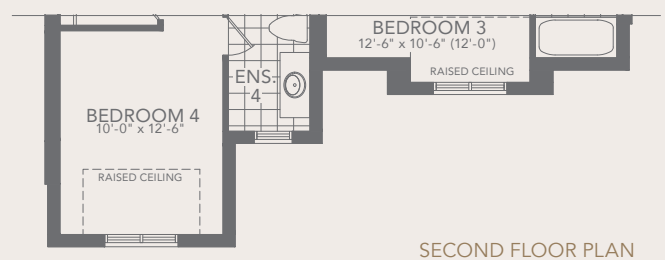
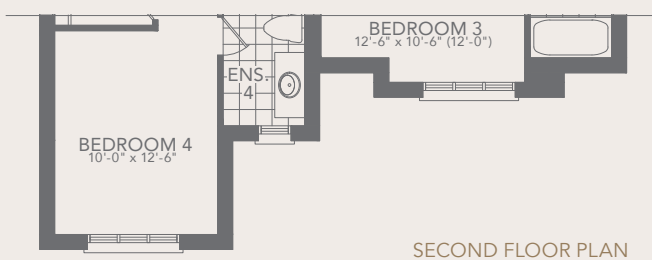
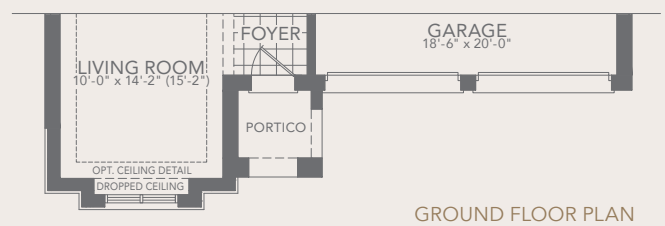
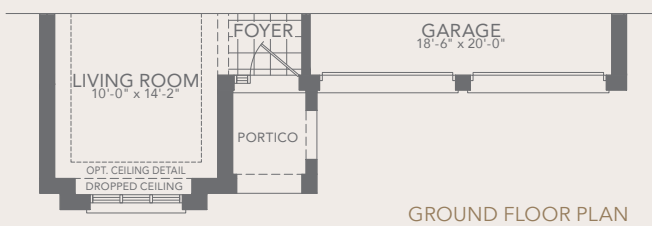
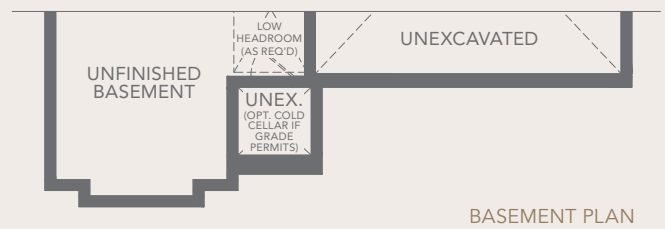


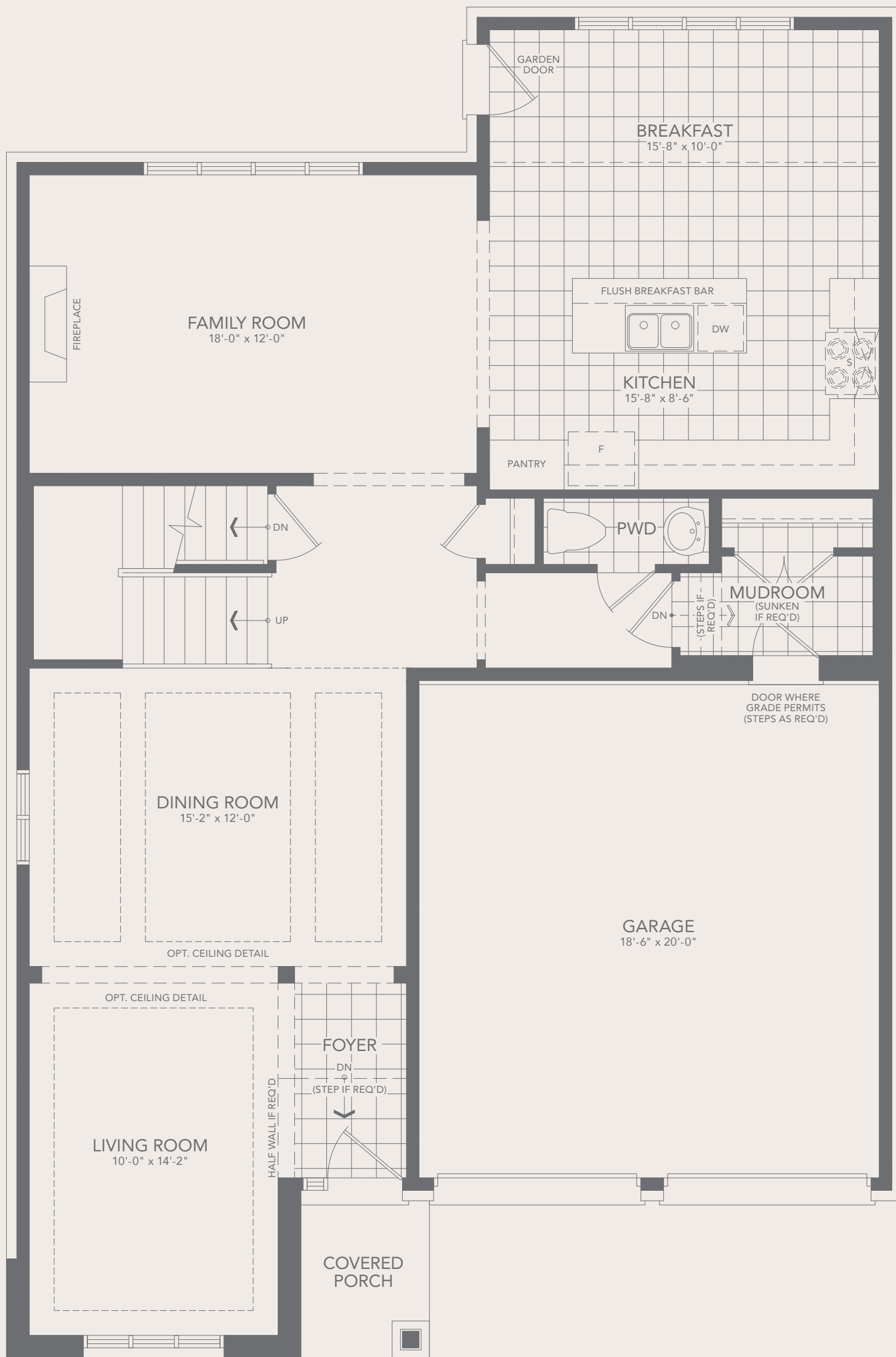
BASEMENT PLAN / ELEVATION A

ELEVATION B

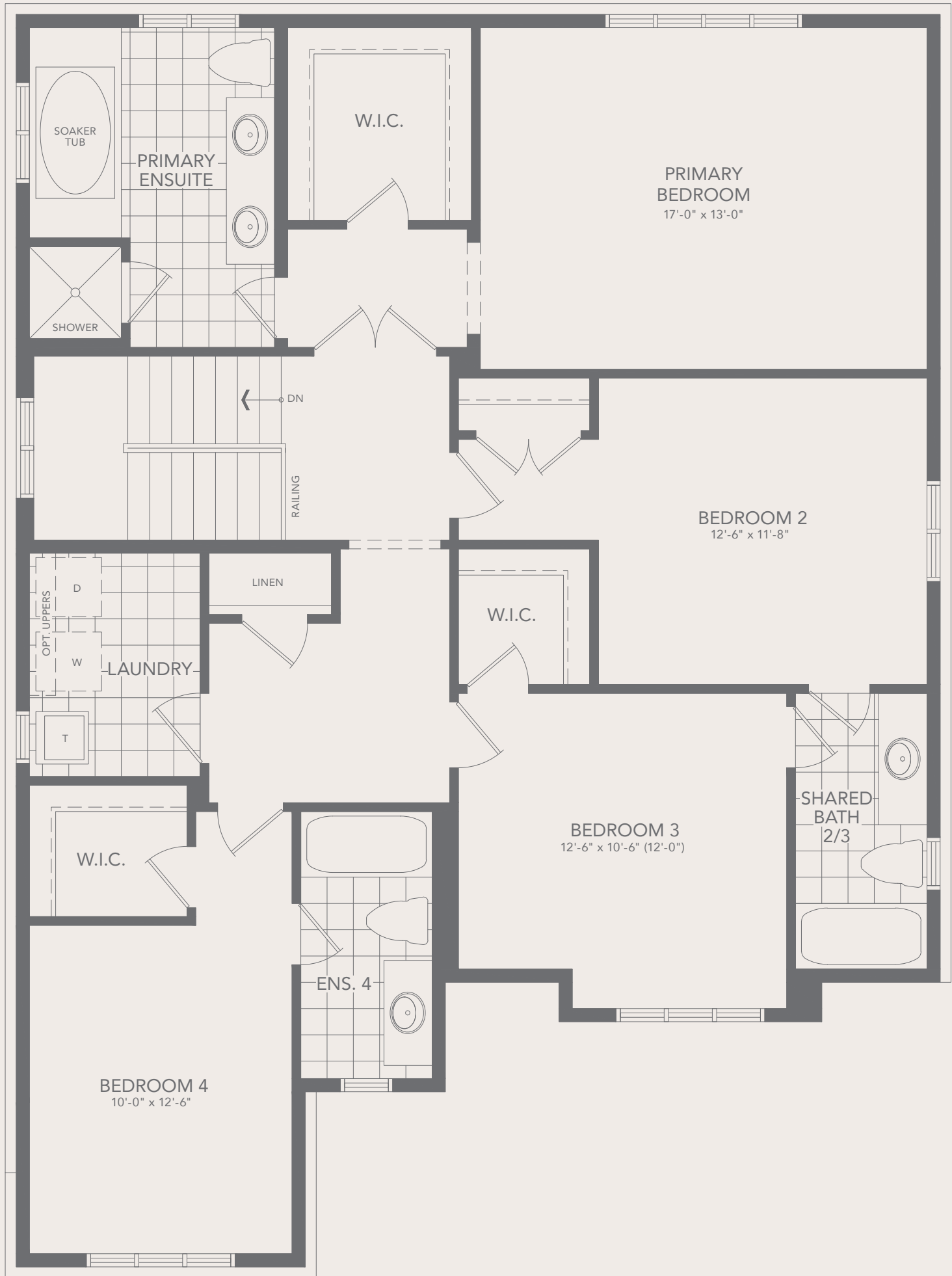


ELEVATION C





GROUND FLOOR PLAN ELEVATION A



SECOND FLOOR PLAN ELEVATION A

All dimensions are approximate. Information subject to change without notice. The square footage is calculated from the outside dimension of the building on the first and second floor and includes the finished area of the basement if applicable. Garages, attics and unfinished area in the basement are not included in calculations. Basement columns, water heater and furnace are not shown and will be placed based on builder's requirements. Number of steps and railings provided may vary due to grade. Windows vary as per elevation. Actual useable floor space may vary from the stated floor area. Renderings are artist's concept. E.&O.E. - D.O.P. 2024.

# THE SOLUS COLLECTION

## SOLUS 3

**A** 2,926 SQ.FT. **B** 2,977 SQ.FT. **C** 2,991 SQ.FT.  
Includes 10 SQ.FT. Open Area



ELEVATION C



ELEVATION A



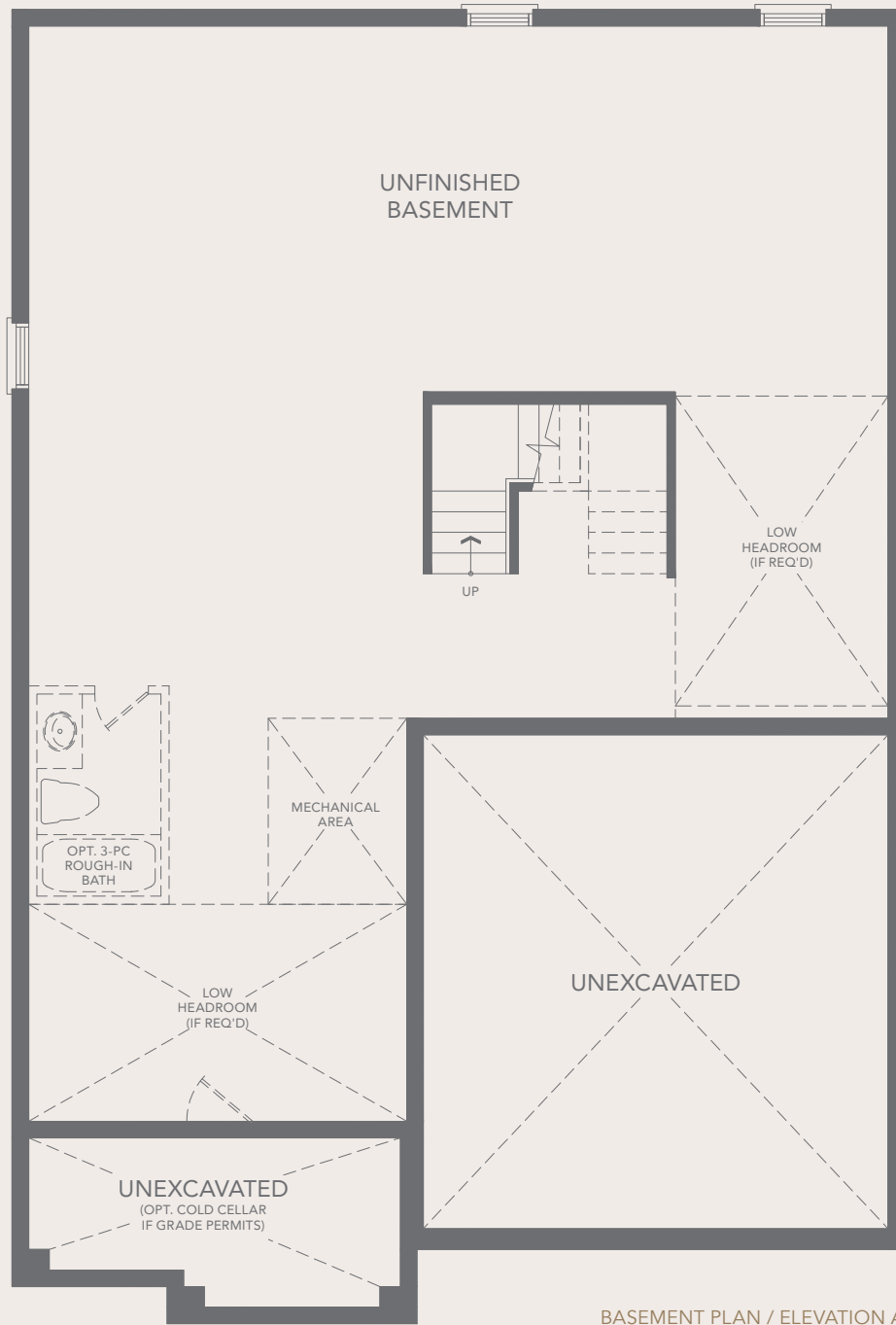
ELEVATION B

AMIRA

# SOLUS 3

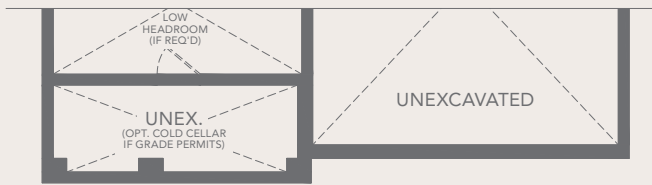
(45-3) A 2,926 SQ.FT. B 2,977 SQ.FT. C 2,991 SQ.FT.

Includes 10 SQ.FT. Open Area



BASEMENT PLAN / ELEVATION A

ELEVATION B

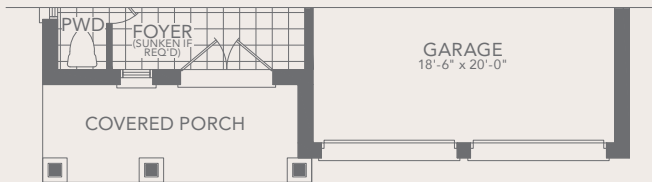


BASEMENT PLAN

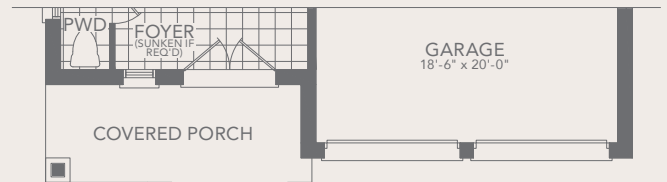
ELEVATION C



BASEMENT PLAN



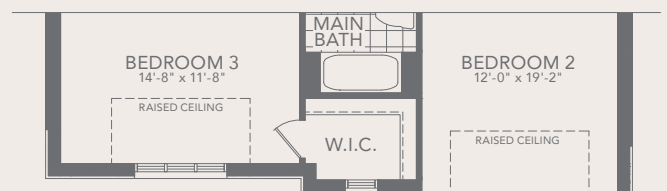
GROUND FLOOR PLAN



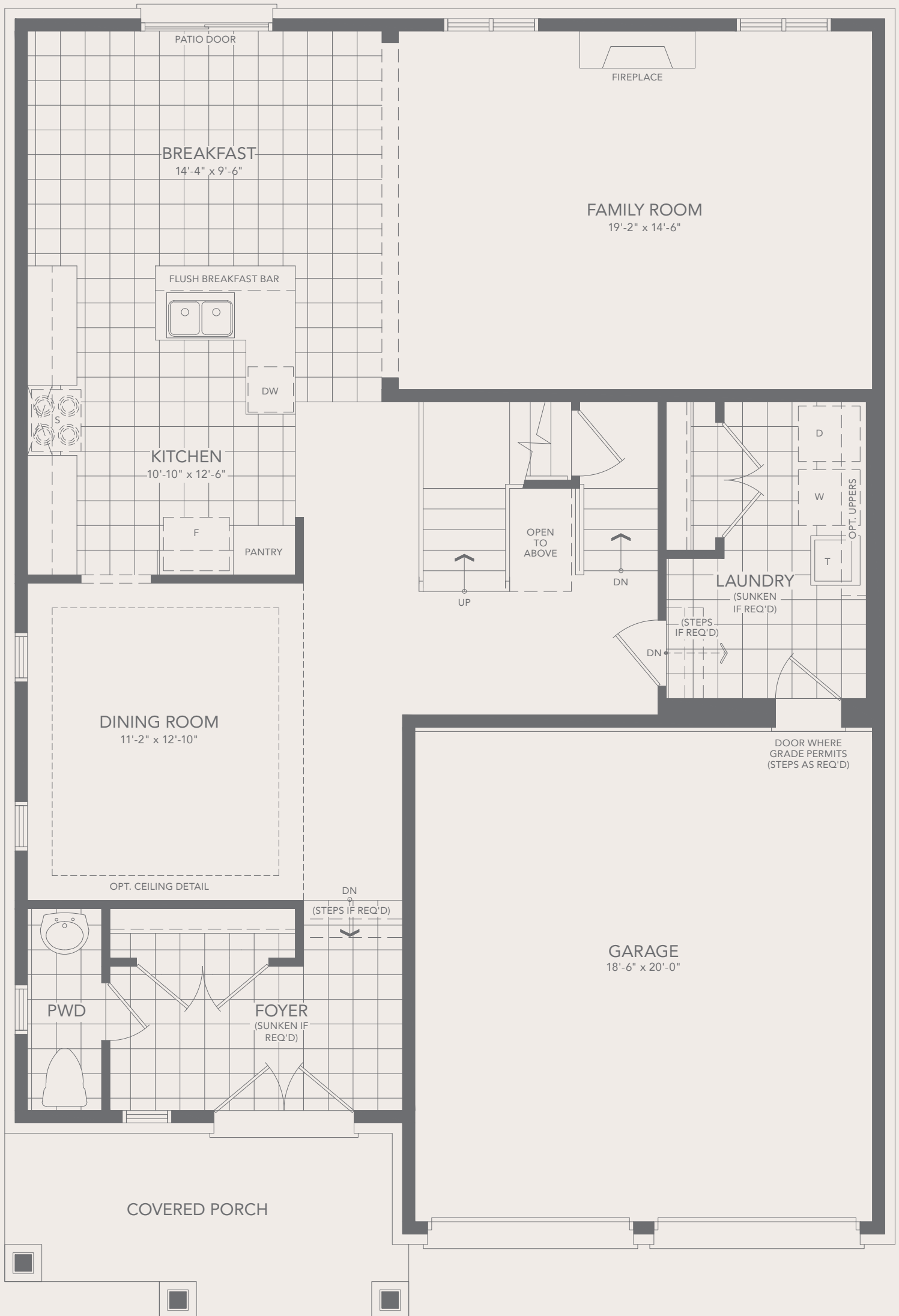
GROUND FLOOR PLAN



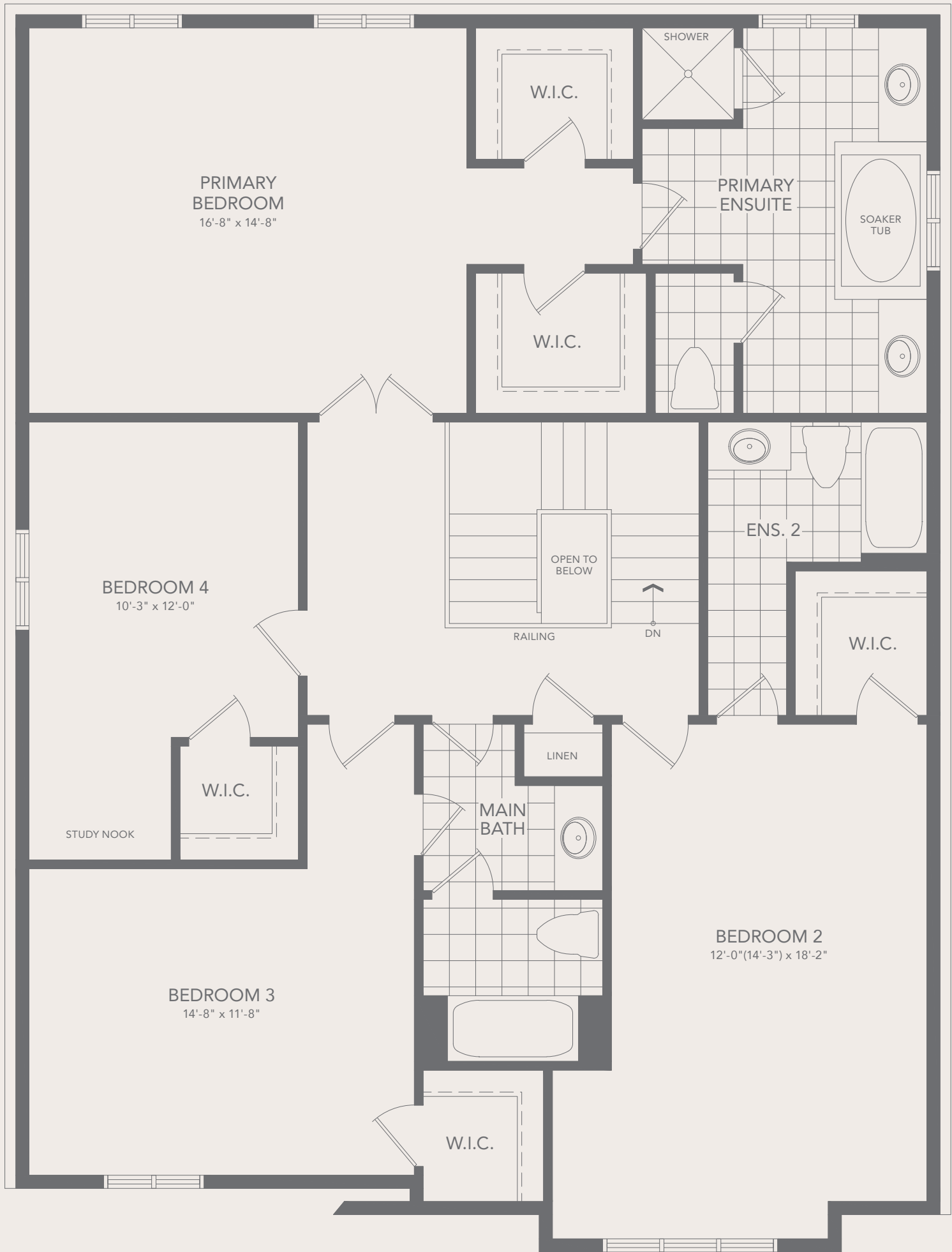
SECOND FLOOR PLAN



SECOND FLOOR PLAN



GROUND FLOOR PLAN ELEVATION A



SECOND FLOOR PLAN ELEVATION A

All dimensions are approximate. Information subject to change without notice. The square footage is calculated from the outside dimension of the building on the first and second floor and includes the finished area of the basement if applicable. Garages, attics and unfinished area in the basement are not included in calculations. Basement columns, water heater and furnace are not shown and will be placed based on builder's requirements. Number of steps and railings provided may vary due to grade. Windows vary as per elevation. Actual useable floor space may vary from the stated floor area. Renderings are artist's concept. E.&O.E. - D.O.P. 2024.



# THE SOLUS COLLECTION

## SOLUS 4

**A** 3,207 SQ.FT. **B** 3,292 SQ.FT. **C** 3,291 SQ.FT.  
Includes 7 SQ.FT. Open Area



ELEVATION C



ELEVATION A

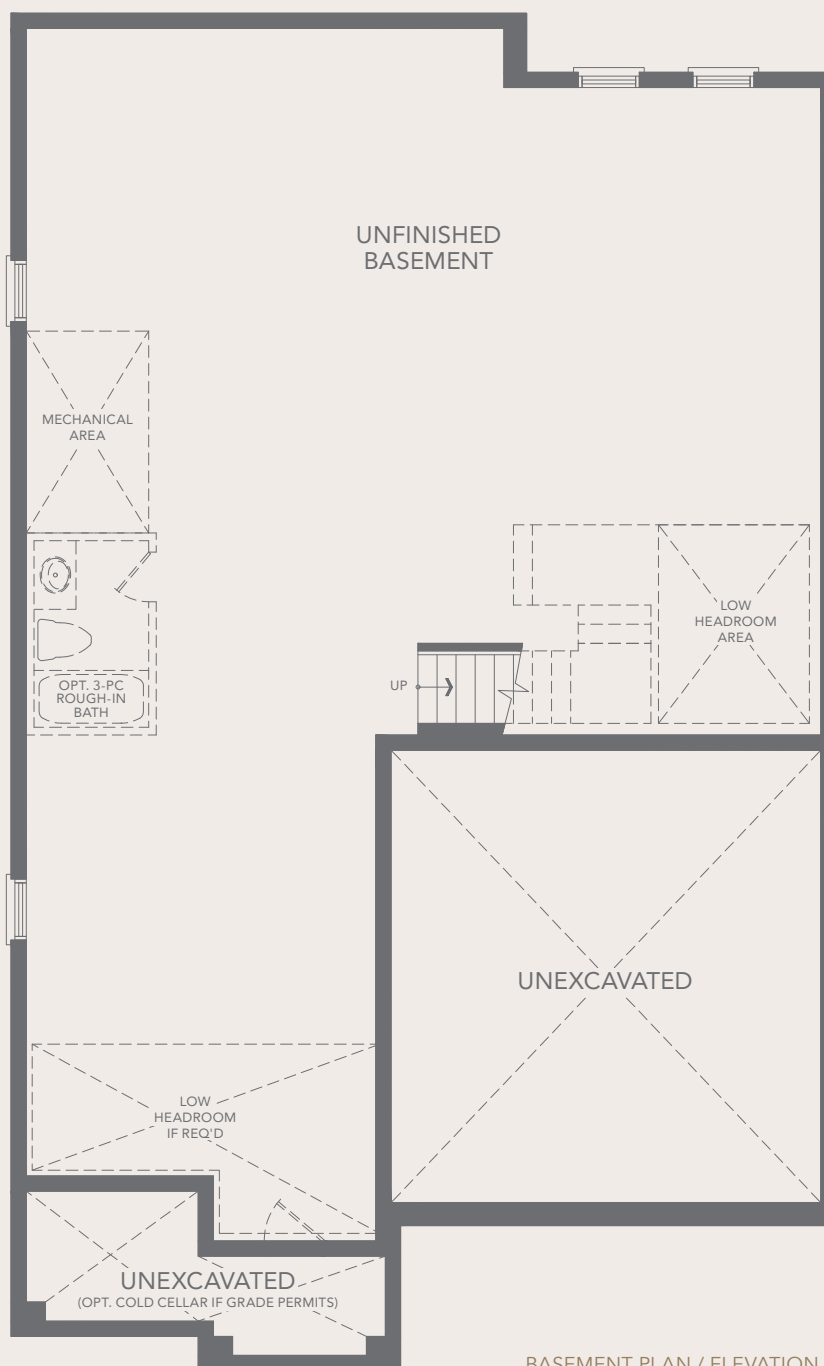


ELEVATION B

AMIRA

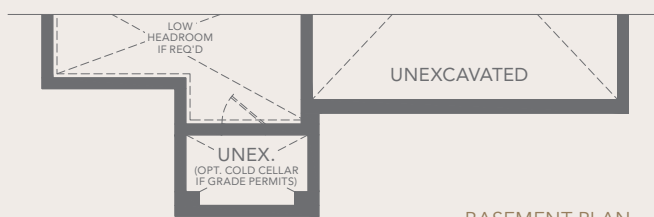
# SOLUS 4 (45-4) A 3,207 SQ.FT. B 3,292 SQ.FT. C 3,291 SQ.FT.

Includes 7 SQ.FT. Open Area



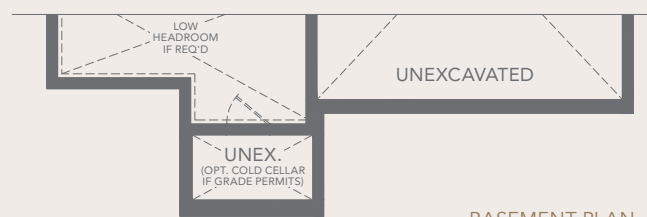
BASEMENT PLAN / ELEVATION A

ELEVATION B

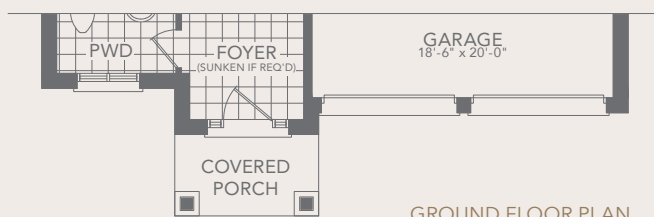


BASEMENT PLAN

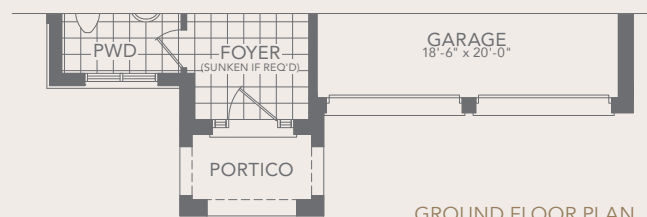
ELEVATION C



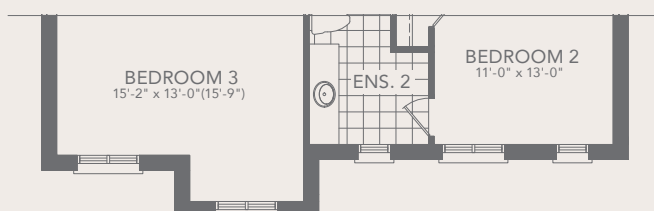
BASEMENT PLAN



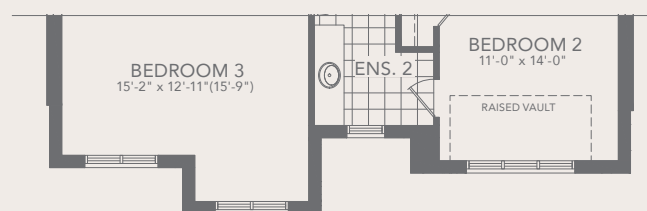
GROUND FLOOR PLAN



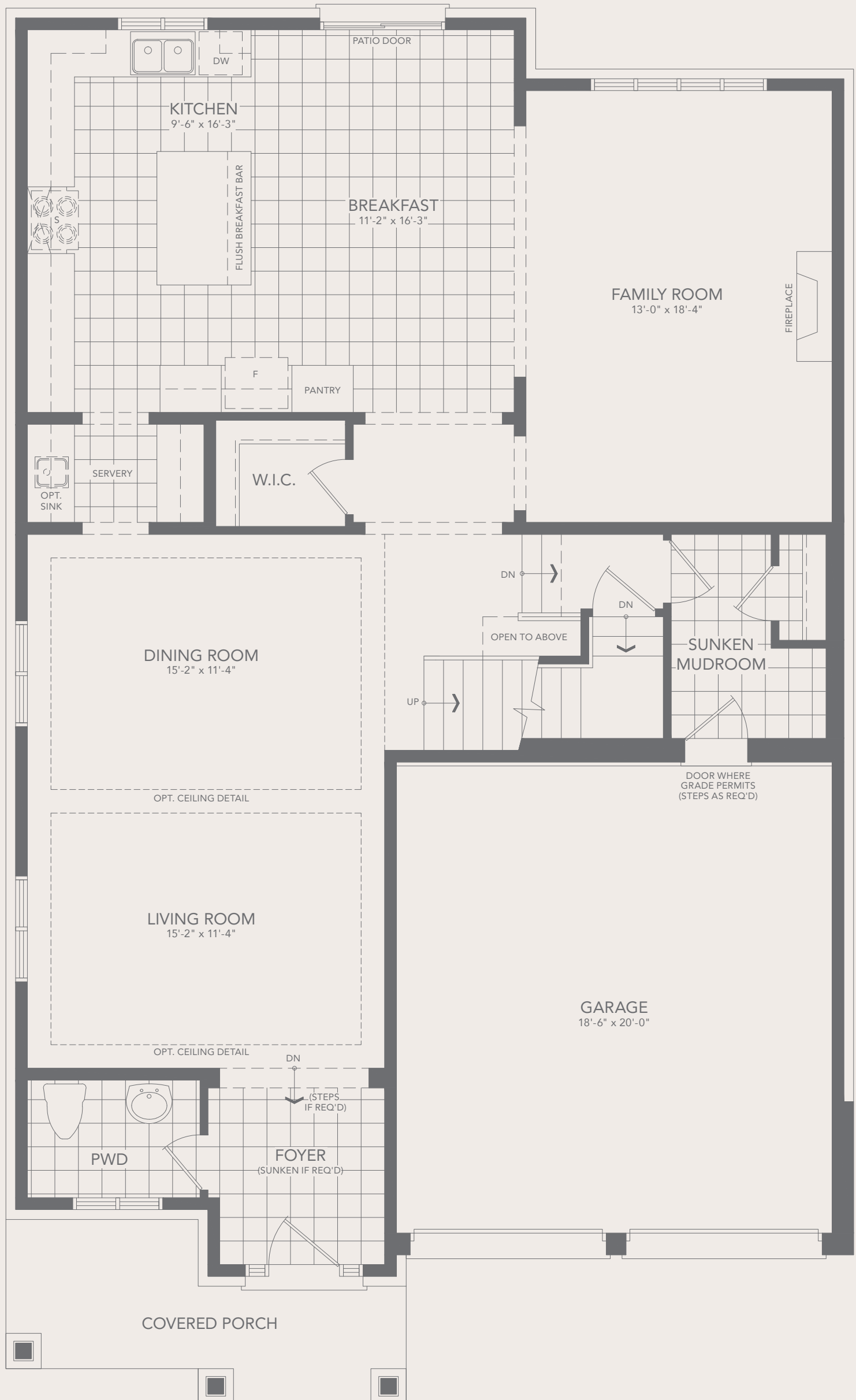
GROUND FLOOR PLAN



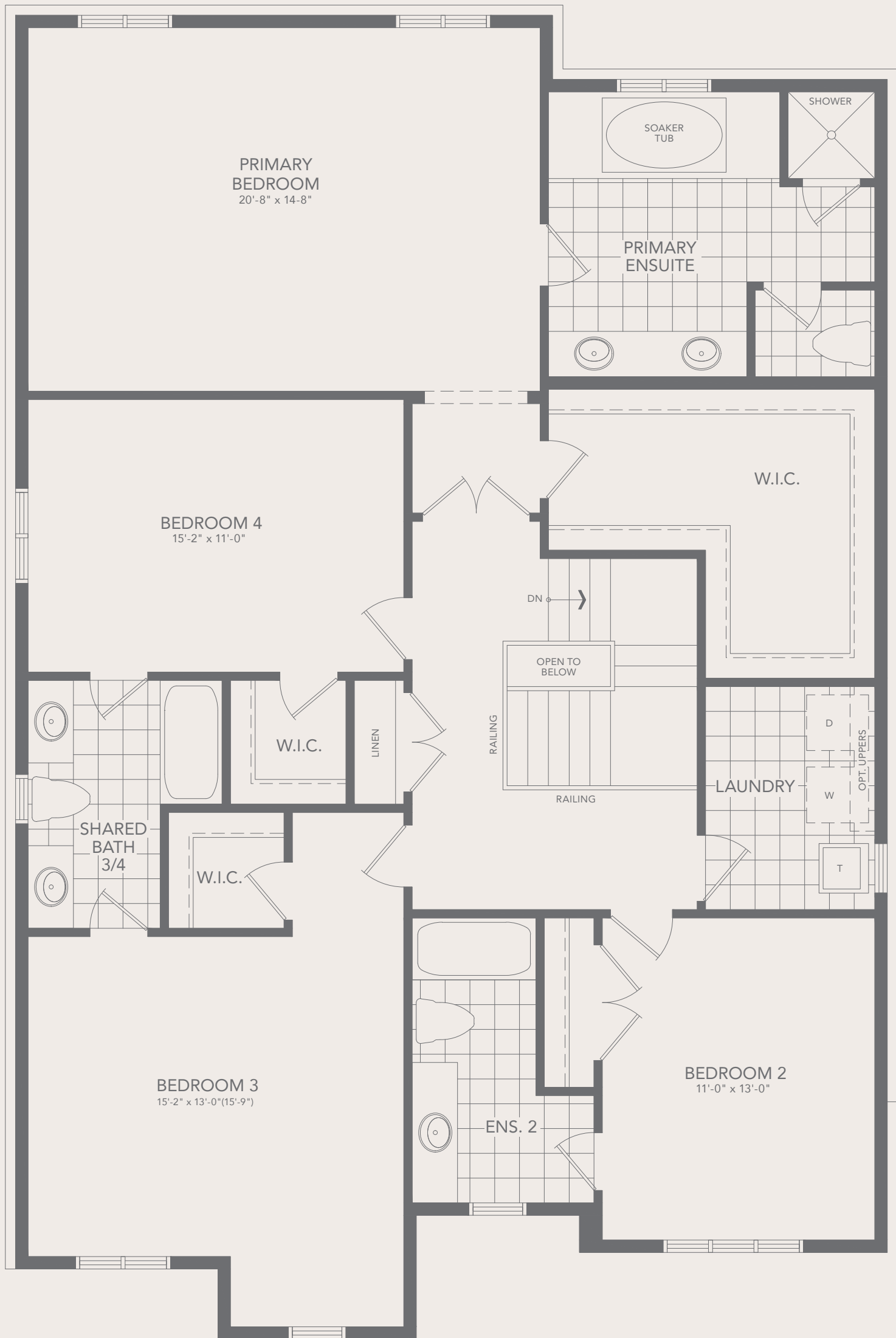
SECOND FLOOR PLAN



SECOND FLOOR PLAN



GROUND FLOOR PLAN ELEVATION A



SECOND FLOOR PLAN ELEVATION A

All dimensions are approximate. Information subject to change without notice. The square footage is calculated from the outside dimension of the building on the first and second floor and includes the finished area of the basement if applicable. Garages, attics and unfinished area in the basement are not included in calculations. Basement columns, water heater and furnace are not shown and will be placed based on builder's requirements. Number of steps and railings provided may vary due to grade. Windows vary as per elevation. Actual useable floor space may vary from the stated floor area. Renderings are artist's concept. E.&O.E. - D.O.P. 2024.

# THE GEMERA COLLECTION

## GEMERA 5

**A** 3,643 SQ.FT. **B** 3,724 SQ.FT. **C** 3,720 SQ.FT.  
Includes 17 SQ.FT. Open Area



ELEVATION C



ELEVATION A



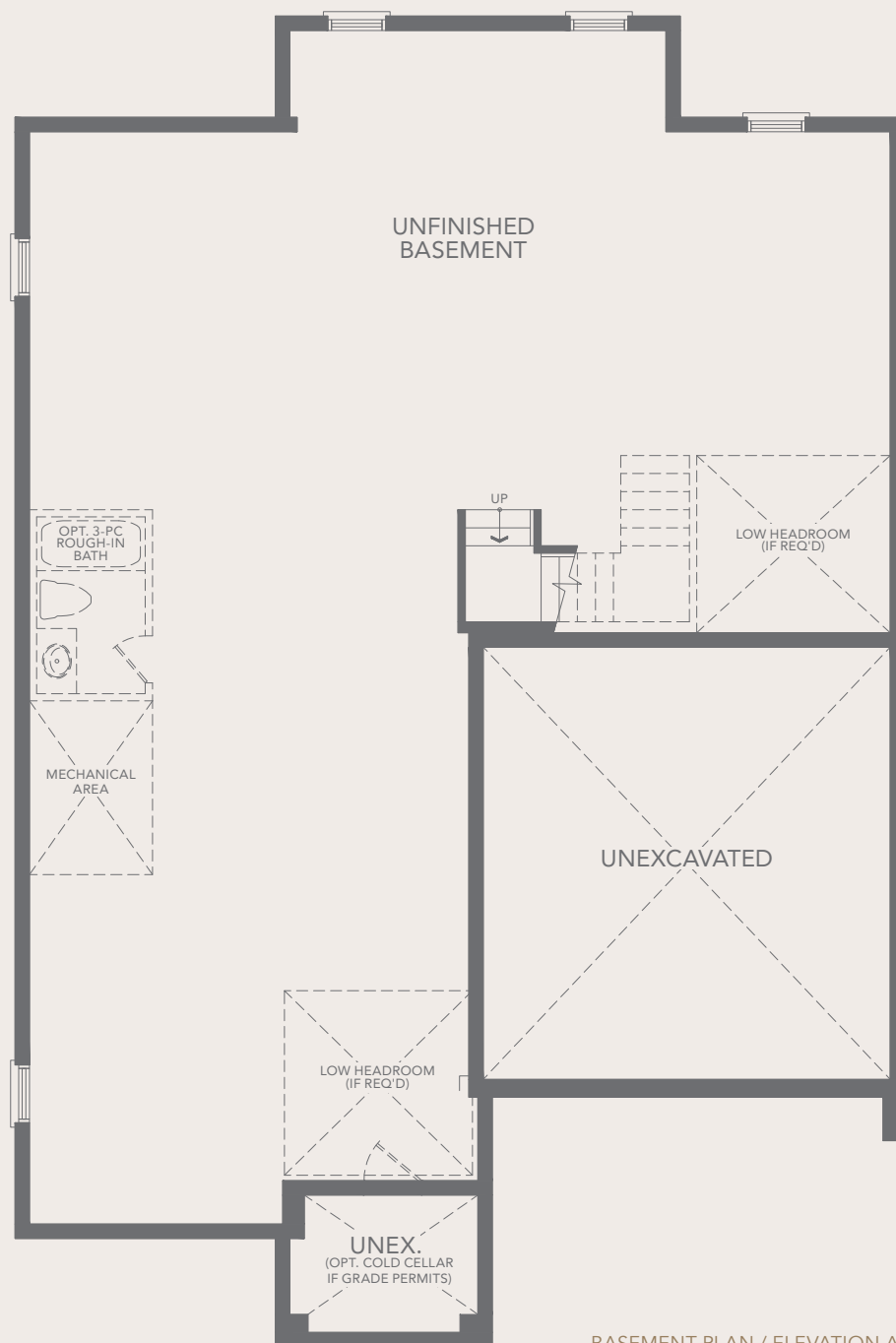
ELEVATION B

## AMIRA

# GEMERA 5

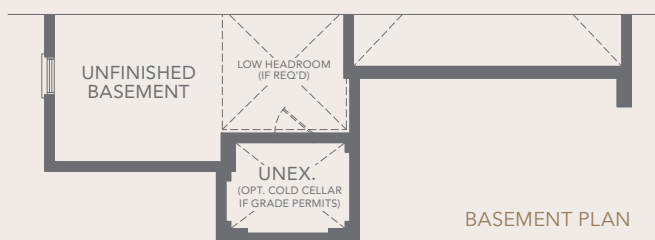
(50-5) A 3,643 SQ.FT. B 3,724 SQ.FT. C 3,720 SQ.FT.

Includes 17 SQ.FT. Open Area

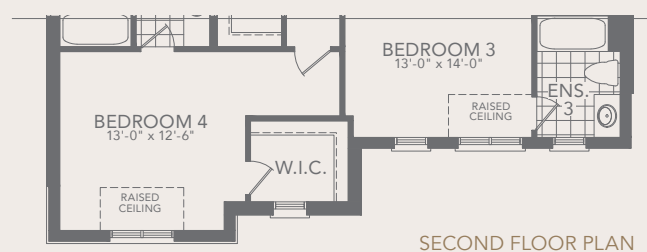
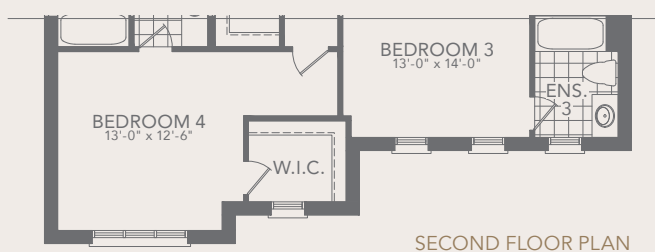
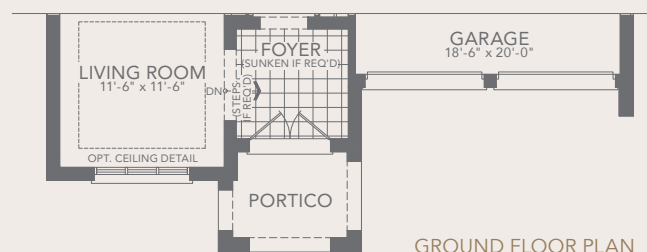
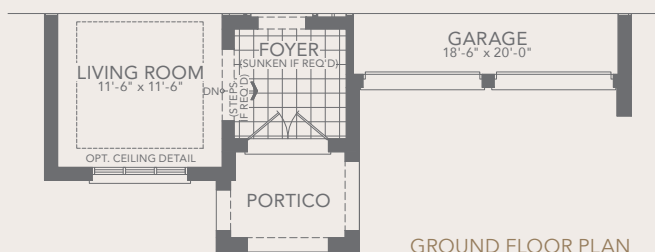
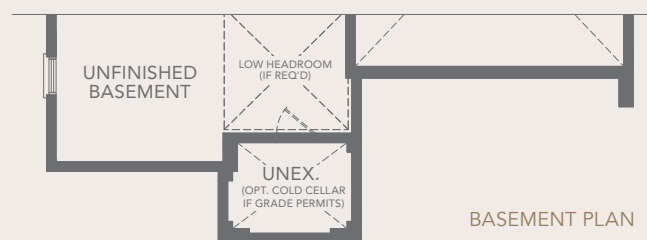


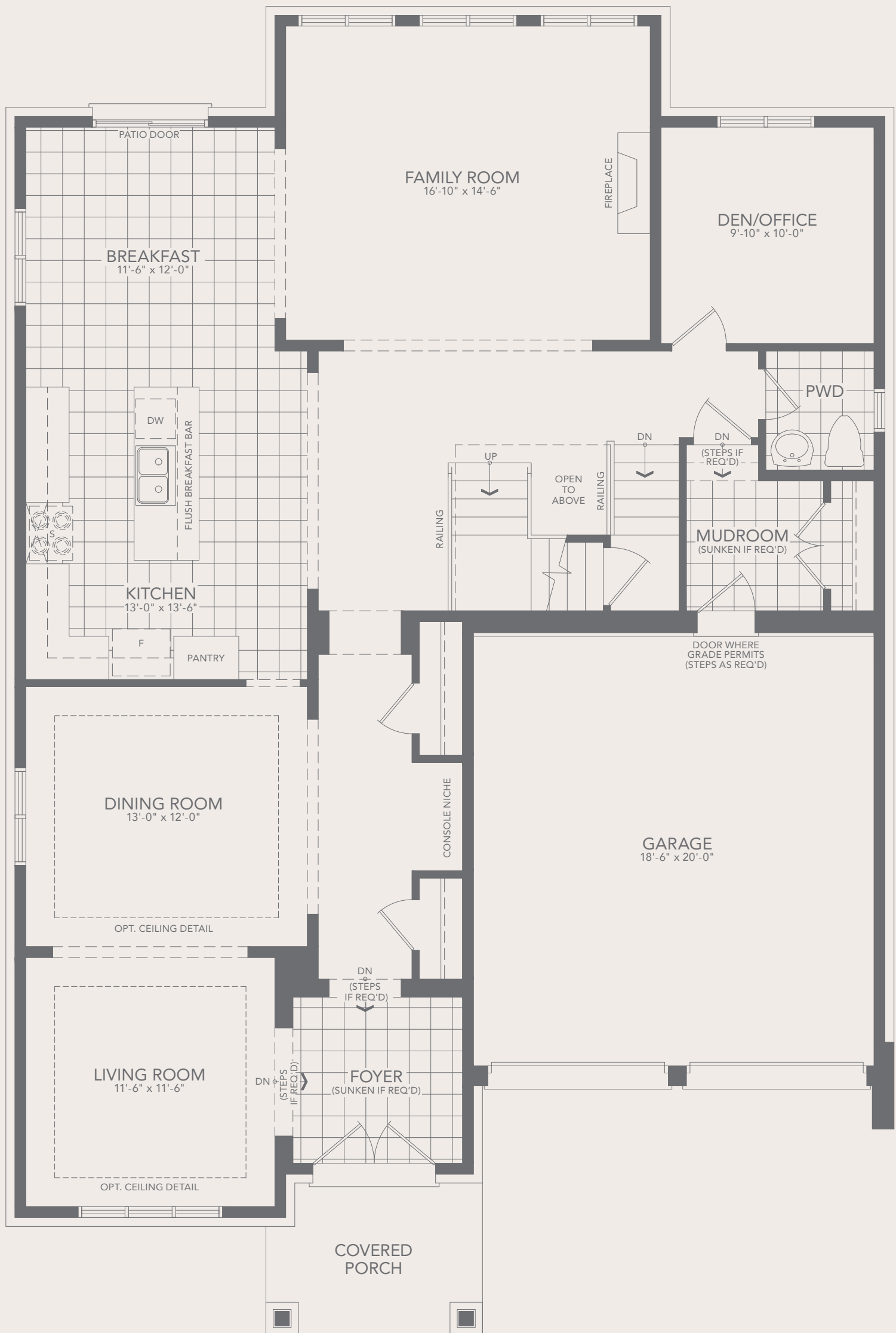
BASEMENT PLAN / ELEVATION A

ELEVATION B



ELEVATION C





GROUND FLOOR PLAN ELEVATION A



SECOND FLOOR PLAN ELEVATION A

All dimensions are approximate. Information subject to change without notice. The square footage is calculated from the outside dimension of the building on the first and second floor and includes the finished area of the basement if applicable. Garages, attics and unfinished area in the basement are not included in calculations. Basement columns, water heater and furnace are not shown and will be placed based on builder's requirements. Number of steps and railings provided may vary due to grade. Windows vary as per elevation. Actual useable floor space may vary from the stated floor area. Renderings are artist's concept. E.&O.E. - D.O.P. 2024.



# THE GEMERA COLLECTION

## GEMERA 6

**A** 4,058 SQ.FT. **B** 4,065 SQ.FT. **C** 4,055 SQ.FT.  
Includes 104 SQ.FT. Open Area



ELEVATION C



ELEVATION A



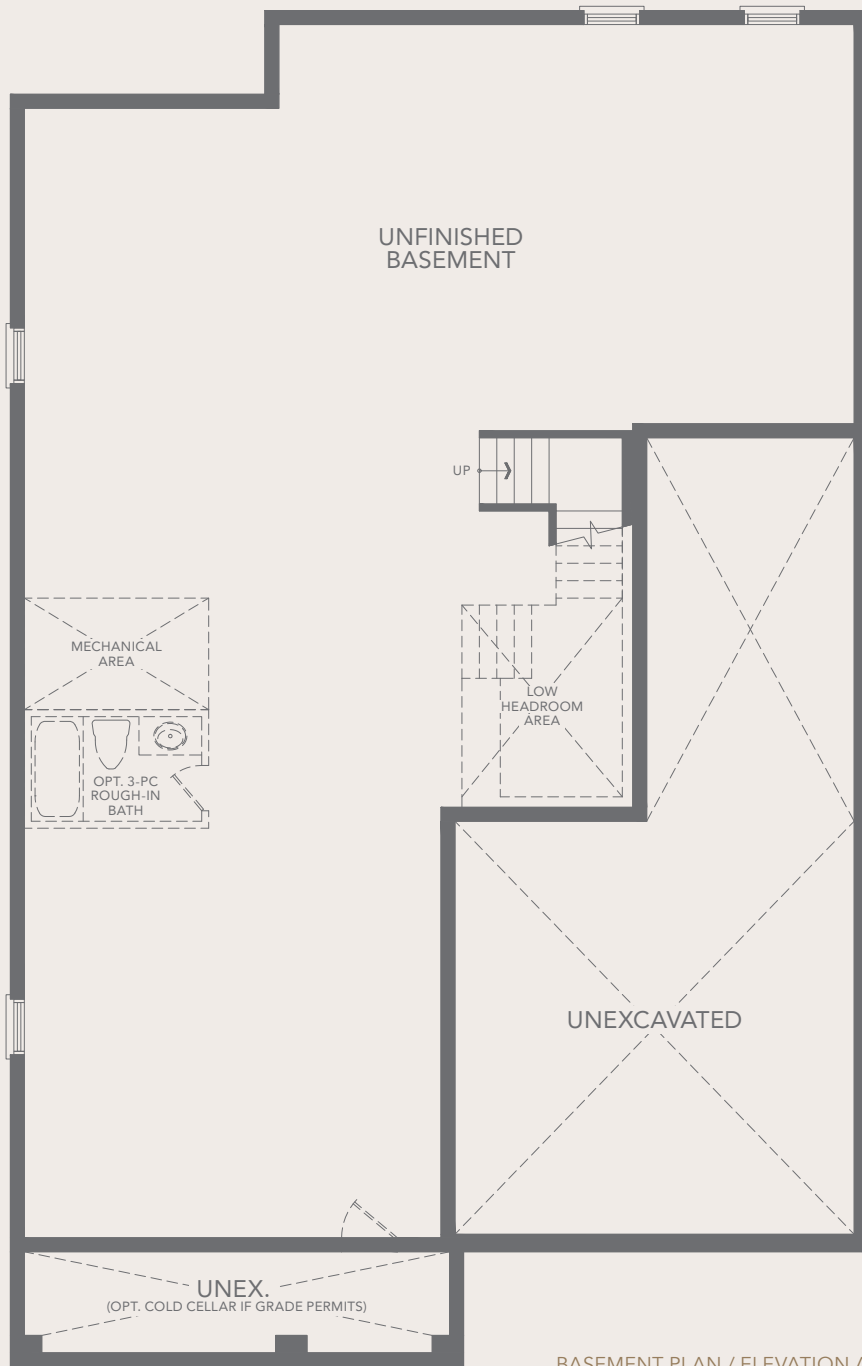
ELEVATION B

AMIRA

# GEMERA 6

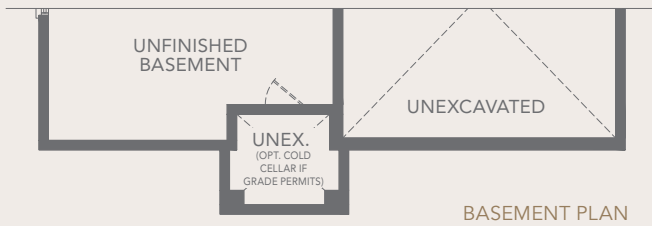
(50-6) A 4,058 SQ.FT. B 4,065 SQ.FT. C 4,055 SQ.FT.

Includes 104 SQ.FT. Open Area



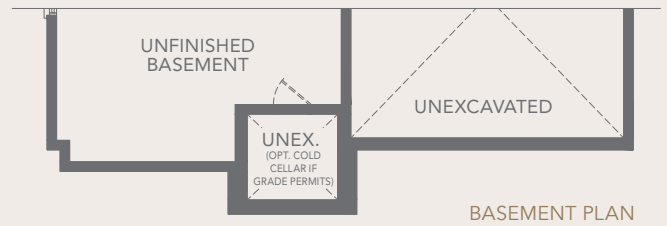
BASEMENT PLAN / ELEVATION A

ELEVATION B

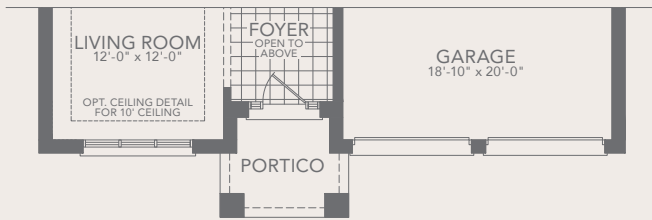


BASEMENT PLAN

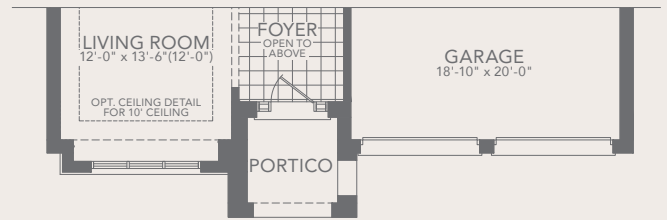
ELEVATION C



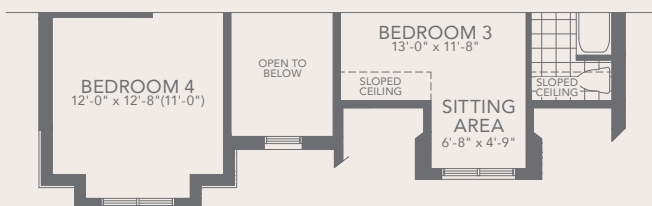
BASEMENT PLAN



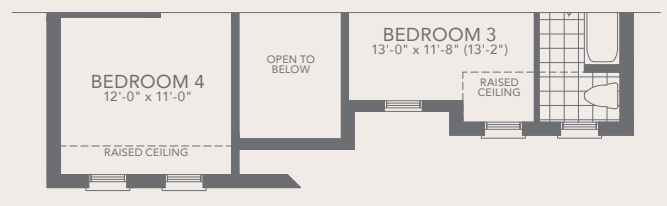
GROUND FLOOR PLAN



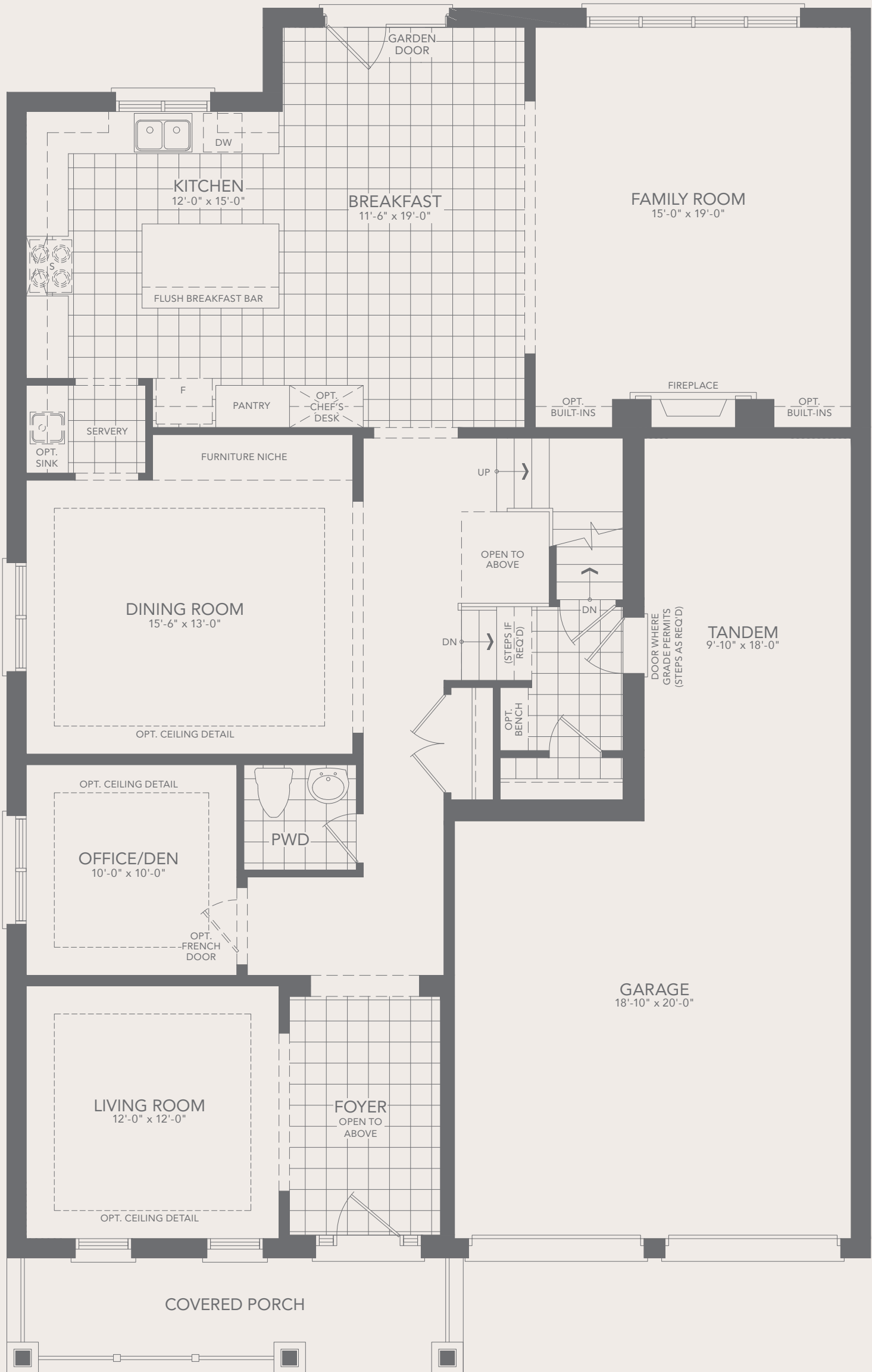
GROUND FLOOR PLAN



SECOND FLOOR PLAN



SECOND FLOOR PLAN



GROUND FLOOR PLAN ELEVATION A



SECOND FLOOR PLAN ELEVATION A

All dimensions are approximate. Information subject to change without notice. The square footage is calculated from the outside dimension of the building on the first and second floor and includes the finished area of the basement if applicable. Garages, attics and unfinished area in the basement are not included in calculations. Basement columns, water heater and furnace are not shown and will be placed based on builder's requirements. Number of steps and railings provided may vary due to grade. Windows vary as per elevation. Actual useable floor space may vary from the stated floor area. Renderings are artist's concept. E.&O.E. - D.O.P. 2024.

# THE GEMERA COLLECTION

## GEMERA 7

**A** 3,549 SQ.FT. **B** 3,593 SQ.FT. **C** 3,582 SQ.FT.  
Includes 10 SQ.FT. Open Area



ELEVATION C



ELEVATION A

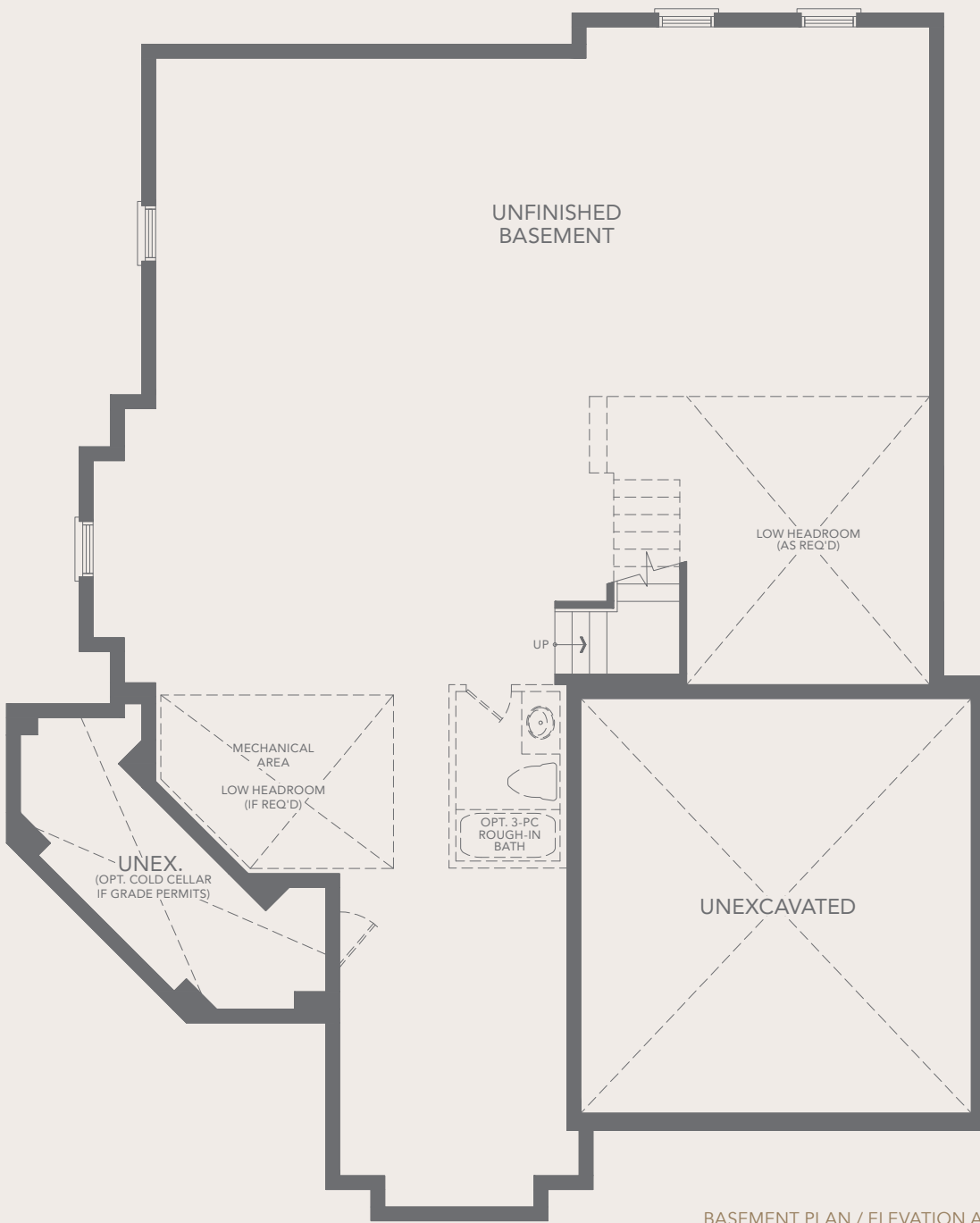


ELEVATION B

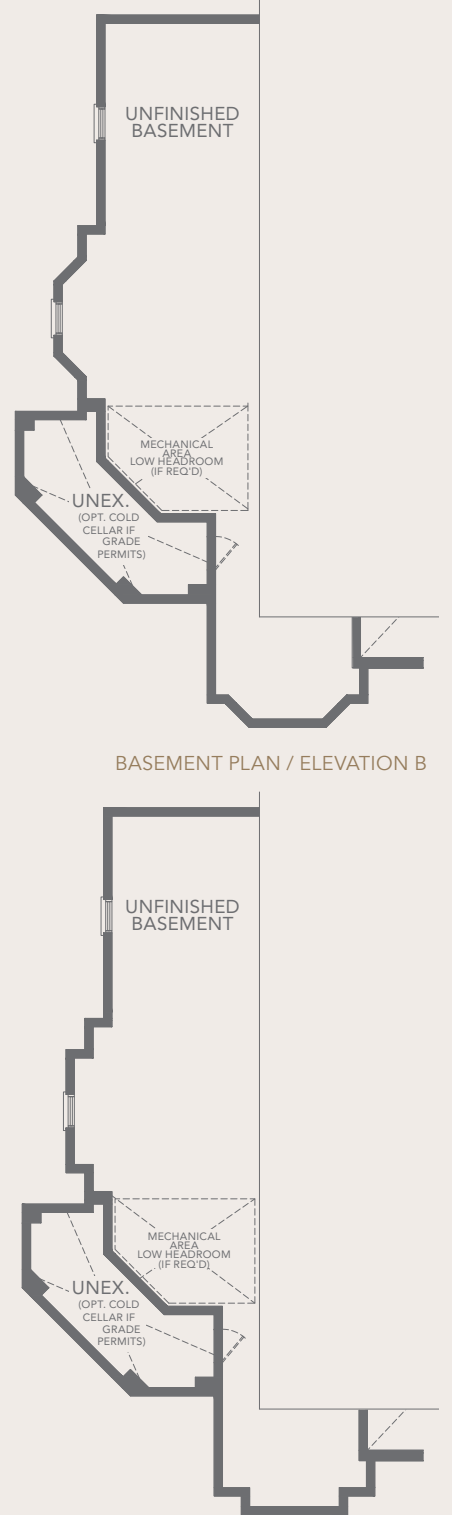
## AMIRA

# GEMERA 7

(50-7) A 3,549 SQ.FT. B 3,593 SQ.FT. C 3,582 SQ.FT.  
Includes 10 SQ.FT. Open Area



BASEMENT PLAN / ELEVATION A

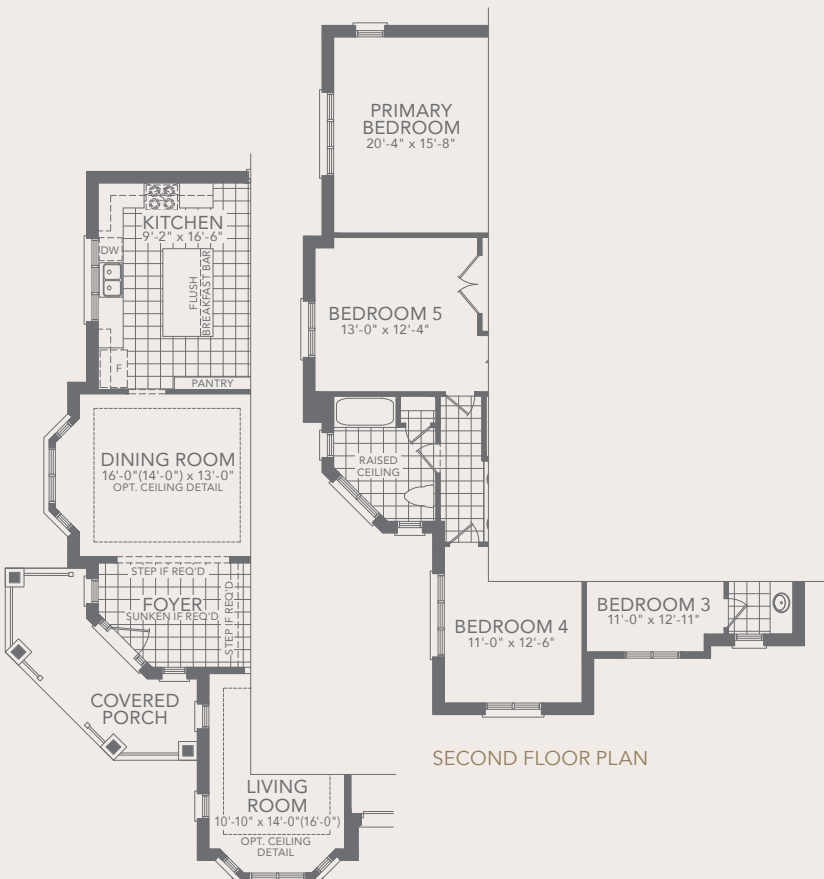


BASEMENT PLAN / ELEVATION B

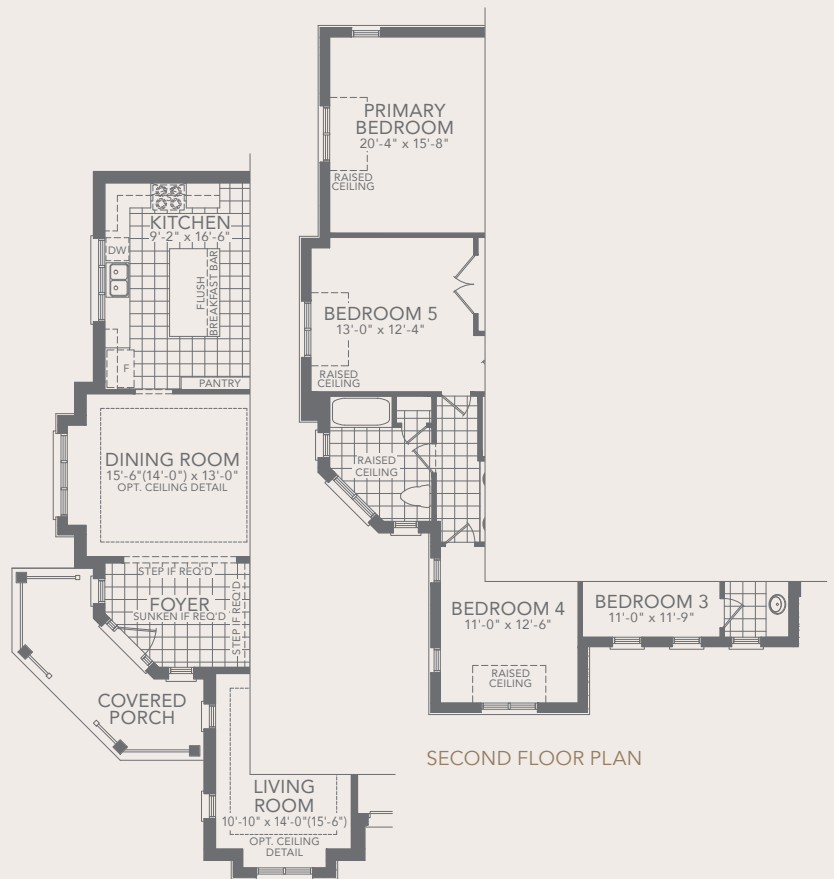
BASEMENT PLAN / ELEVATION C

ELEVATION B

ELEVATION C



GROUND FLOOR PLAN



GROUND FLOOR PLAN



GROUND FLOOR PLAN ELEVATION A



SECOND FLOOR PLAN ELEVATION A

All dimensions are approximate. Information subject to change without notice. The square footage is calculated from the outside dimension of the building on the first and second floor and includes the finished area of the basement if applicable. Garages, attics and unfinished area in the basement are not included in calculations. Basement columns, water heater and furnace are not shown and will be placed based on builder's requirements. Number of steps and railings provided may vary due to grade. Windows vary as per elevation. Actual useable floor space may vary from the stated floor area. Renderings are artist's concept. E.&O.E. - D.O.P. 2024.