

BEECH B | 3075 SQ. FT.



BEECH C | 3050 SQ. FT.



A

42

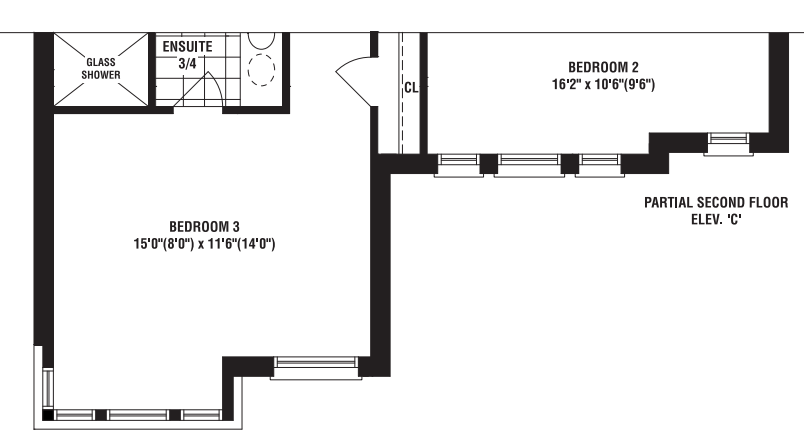
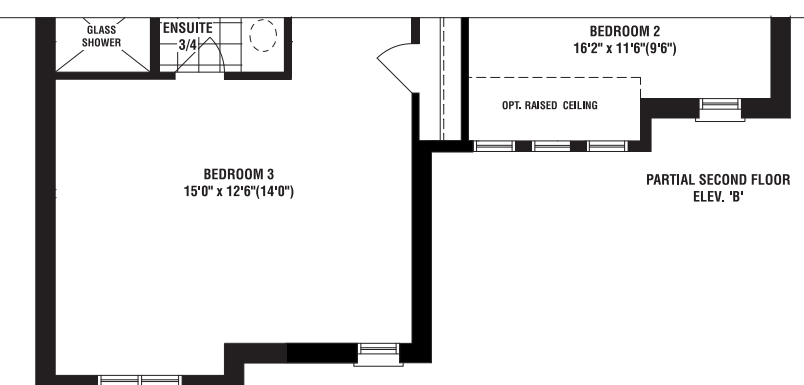
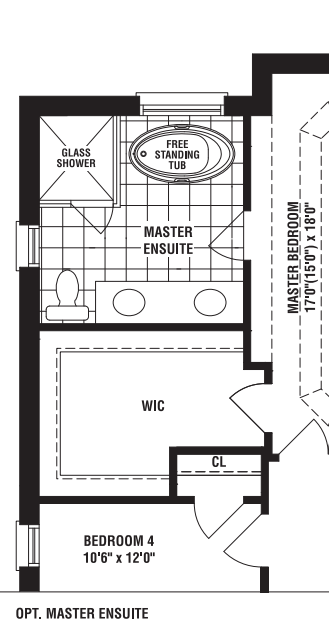
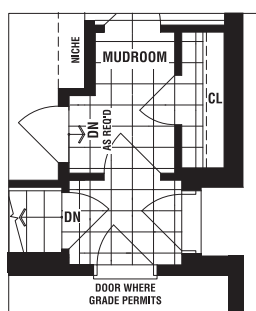
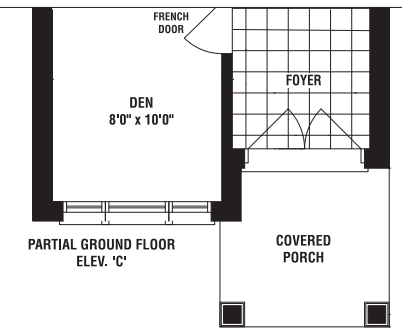
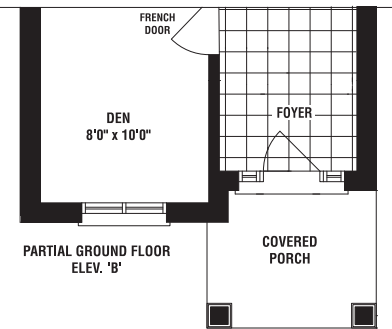
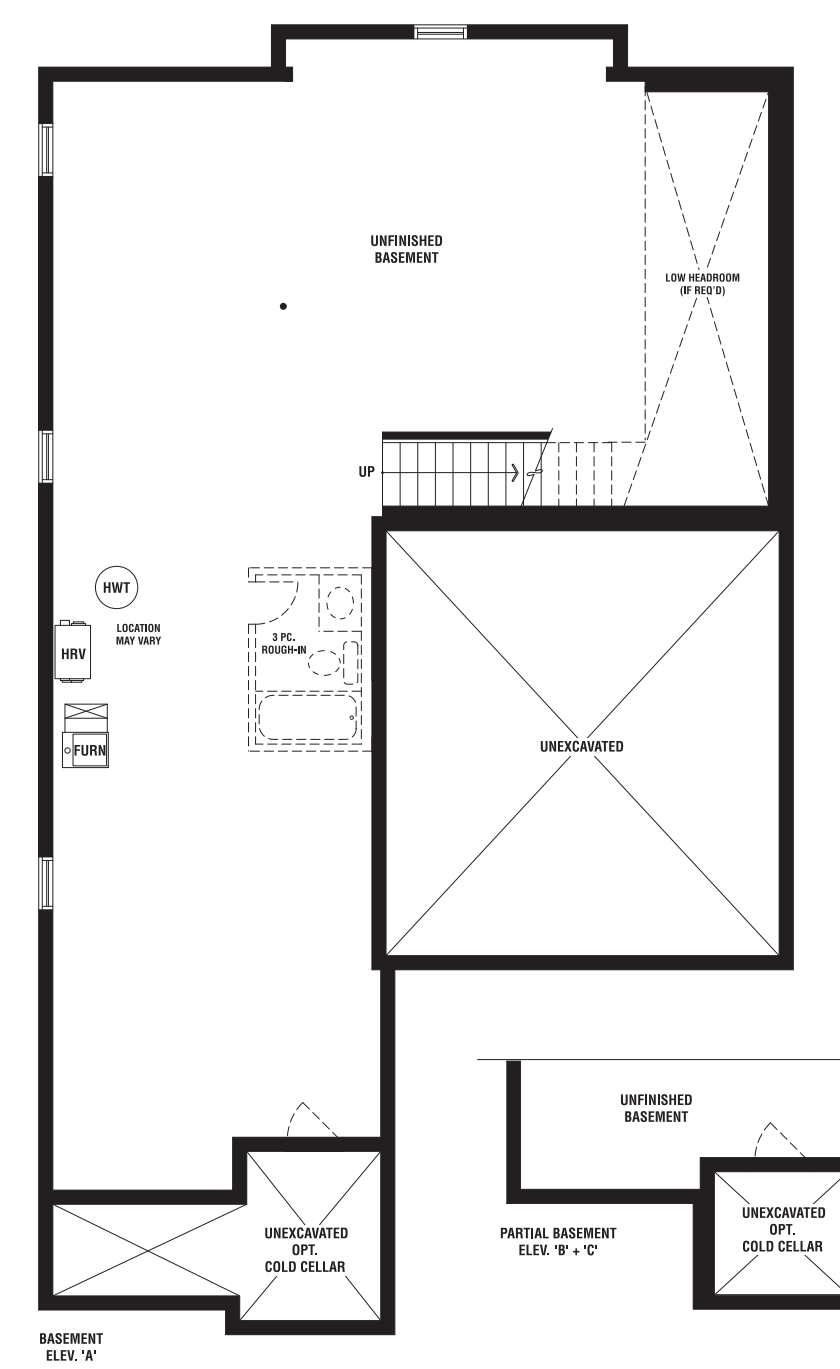
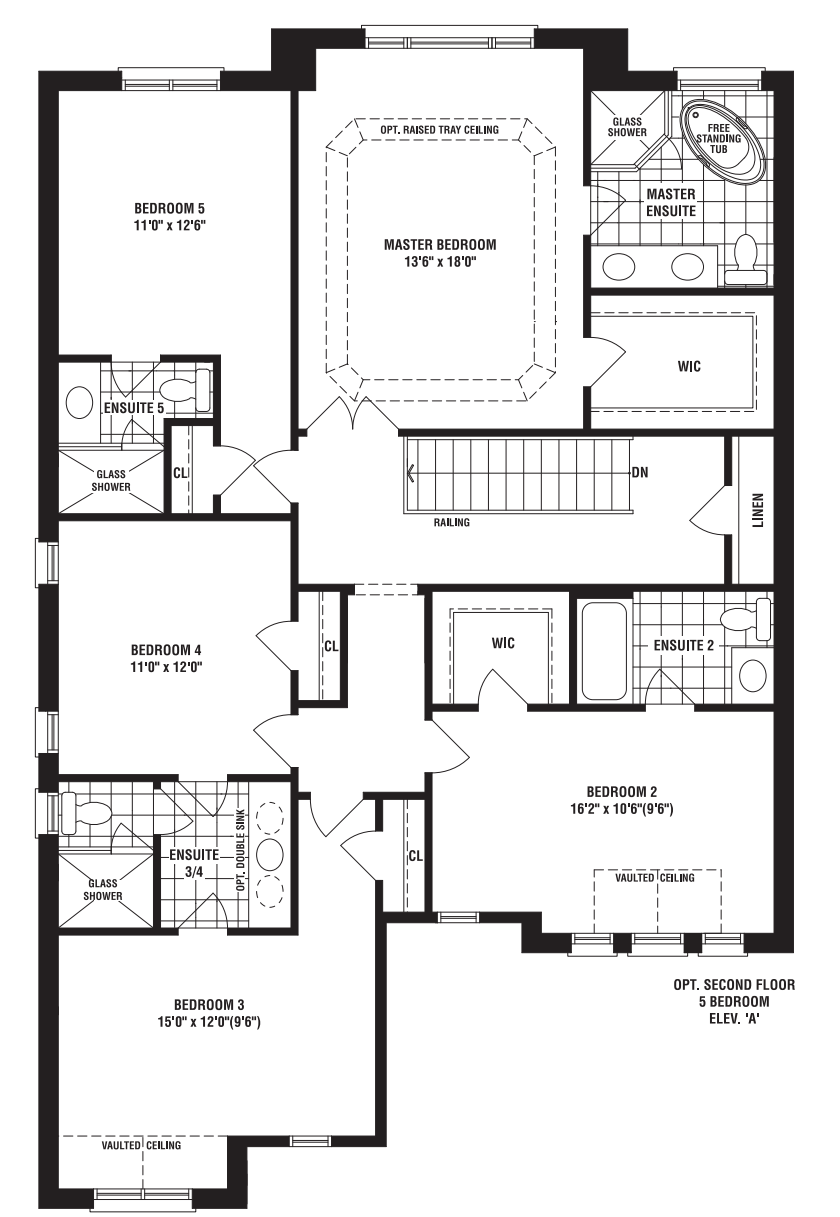
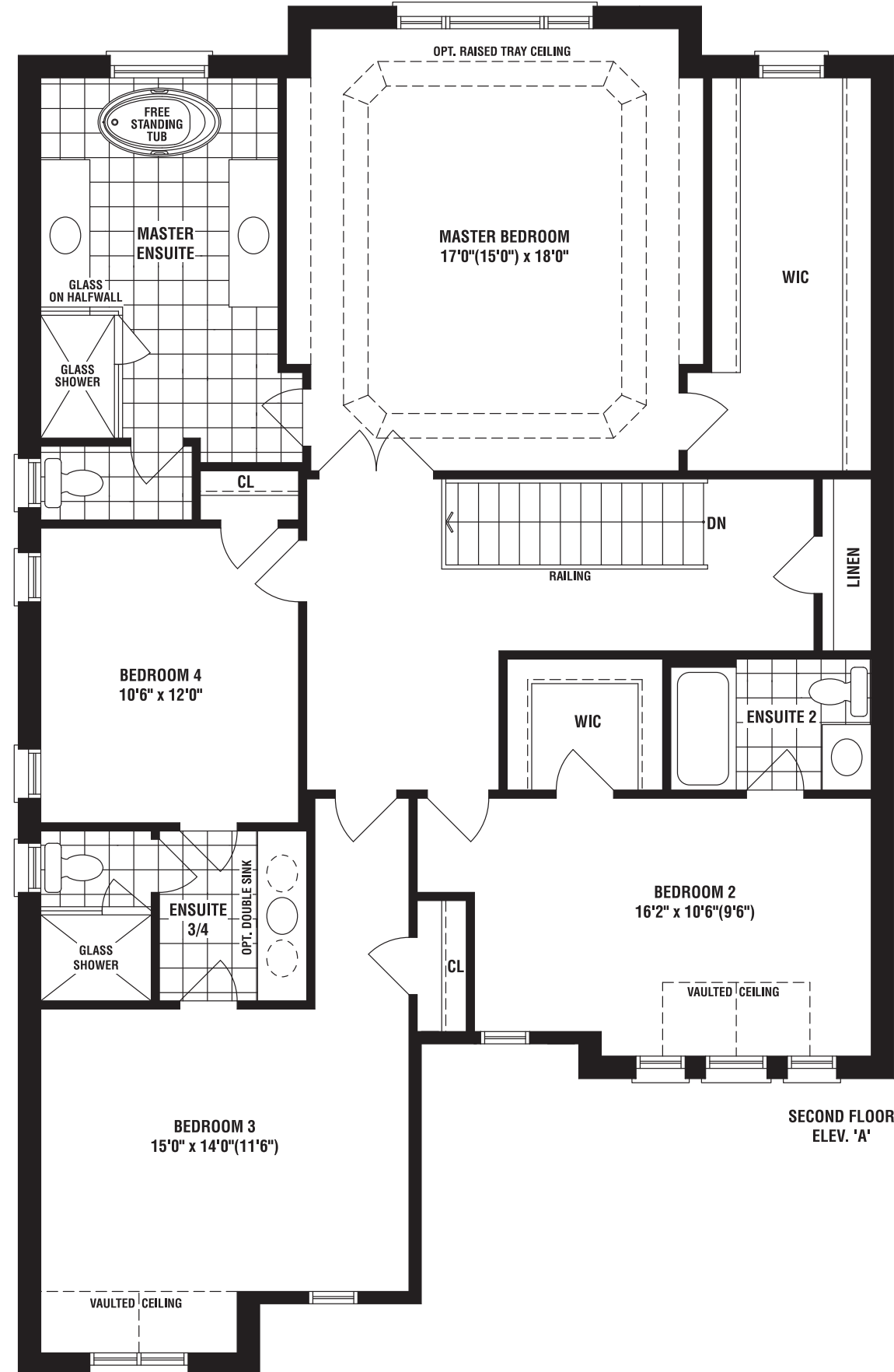
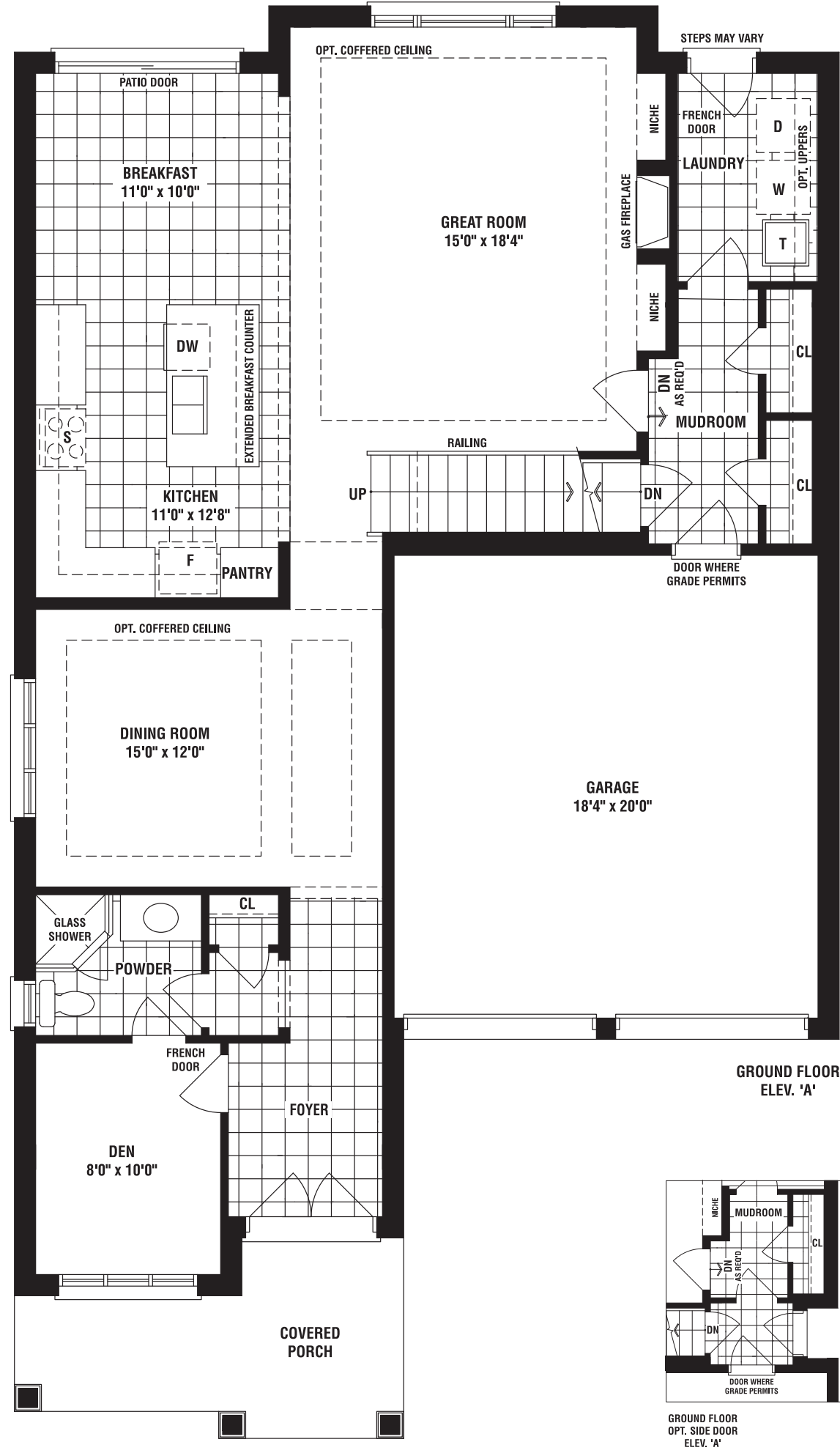


WHERE THE HORIZON MEETS HOME.

BEECH

A 3040 SQ. FT. B 3075 SQ. FT. C 3050 SQ. FT.

4 BEDROOMS
ADDITIONAL BEDROOM OPTION AVAILABLE



4203

HAWTHORNE B | 2705 SQ. FT.



HAWTHORNE C | 2670 SQ. FT.



A

42



WHERE THE HORIZON MEETS HOME.

55+ | Yorkwood HOMES

LAURIER HOMES SINCE 1976



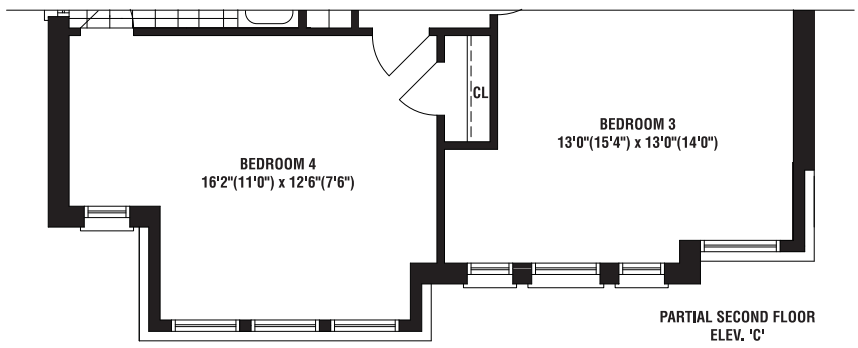
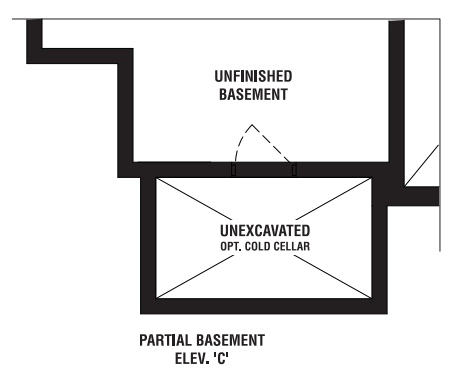
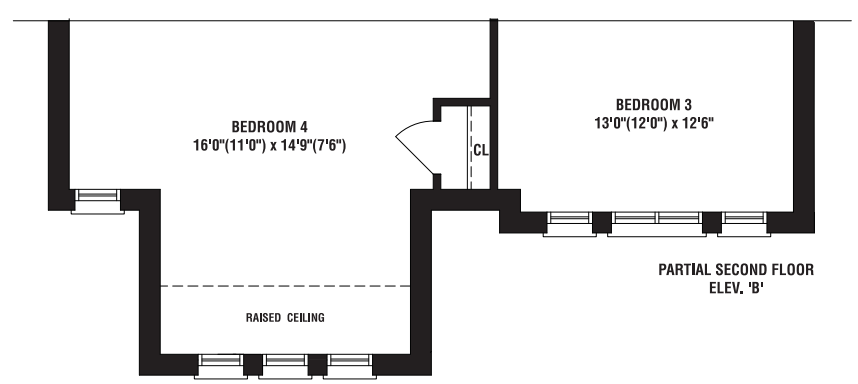
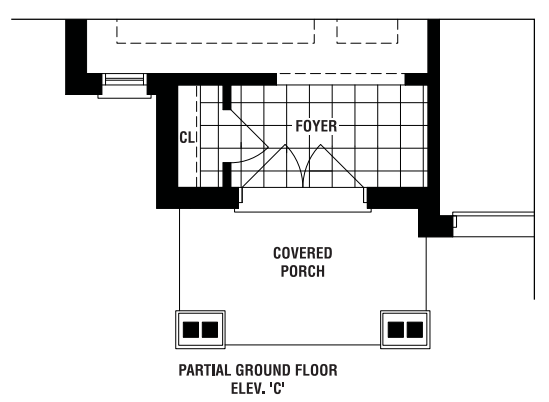
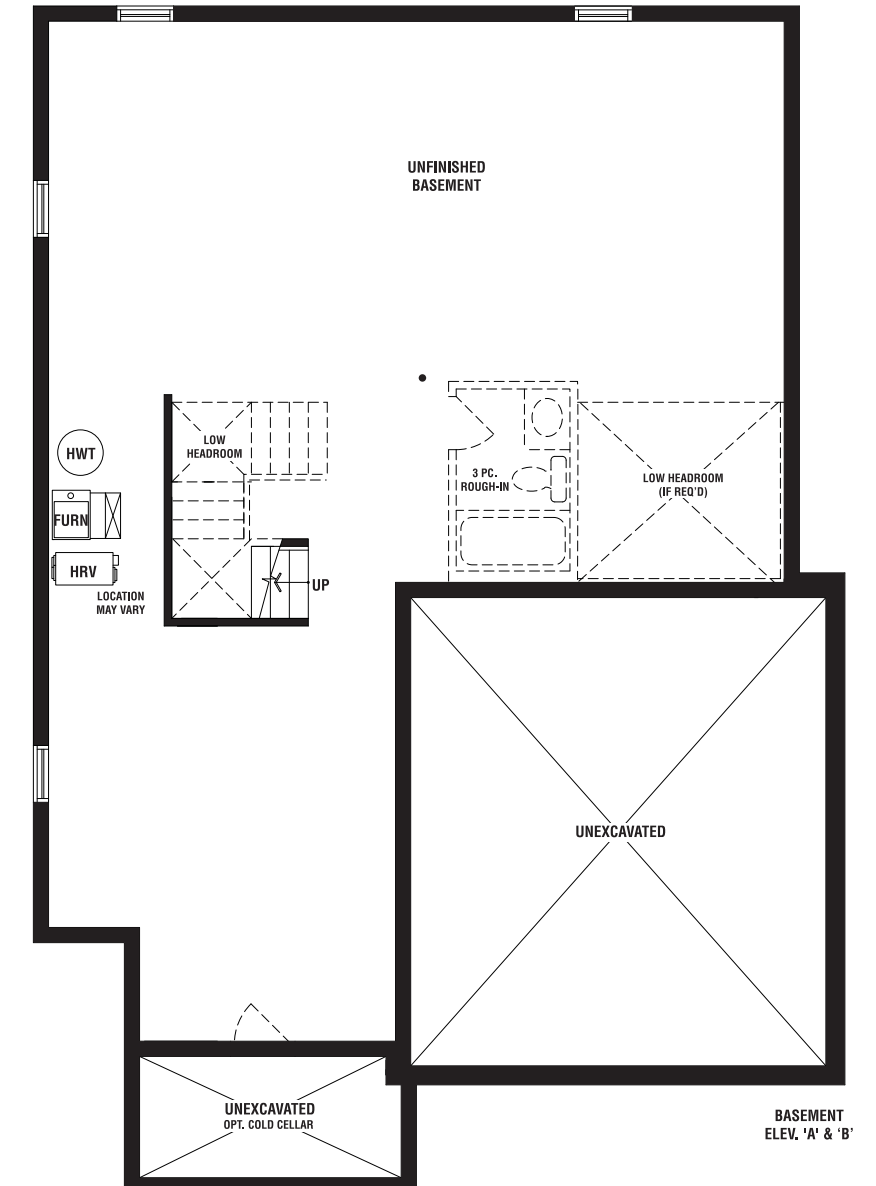
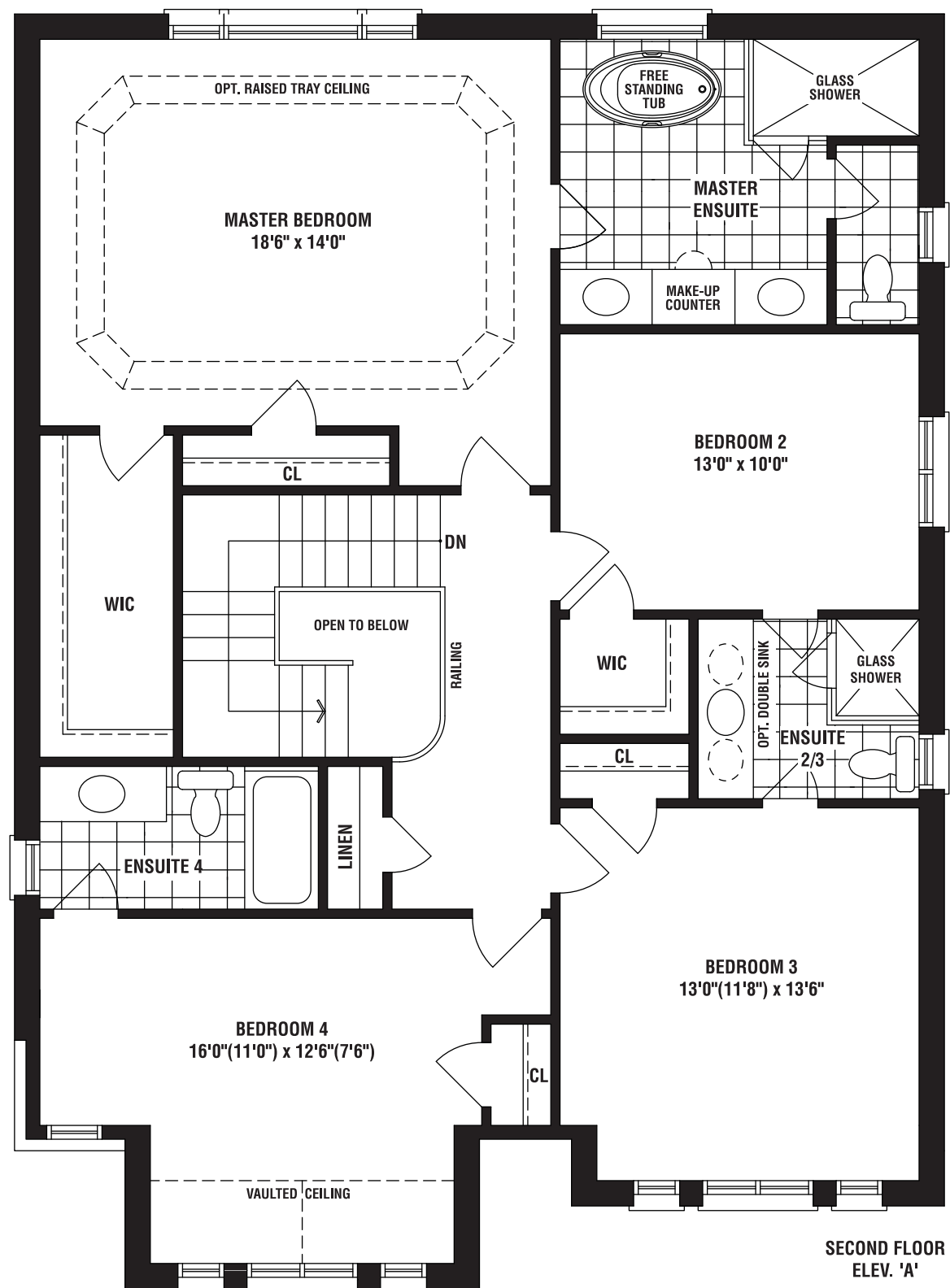
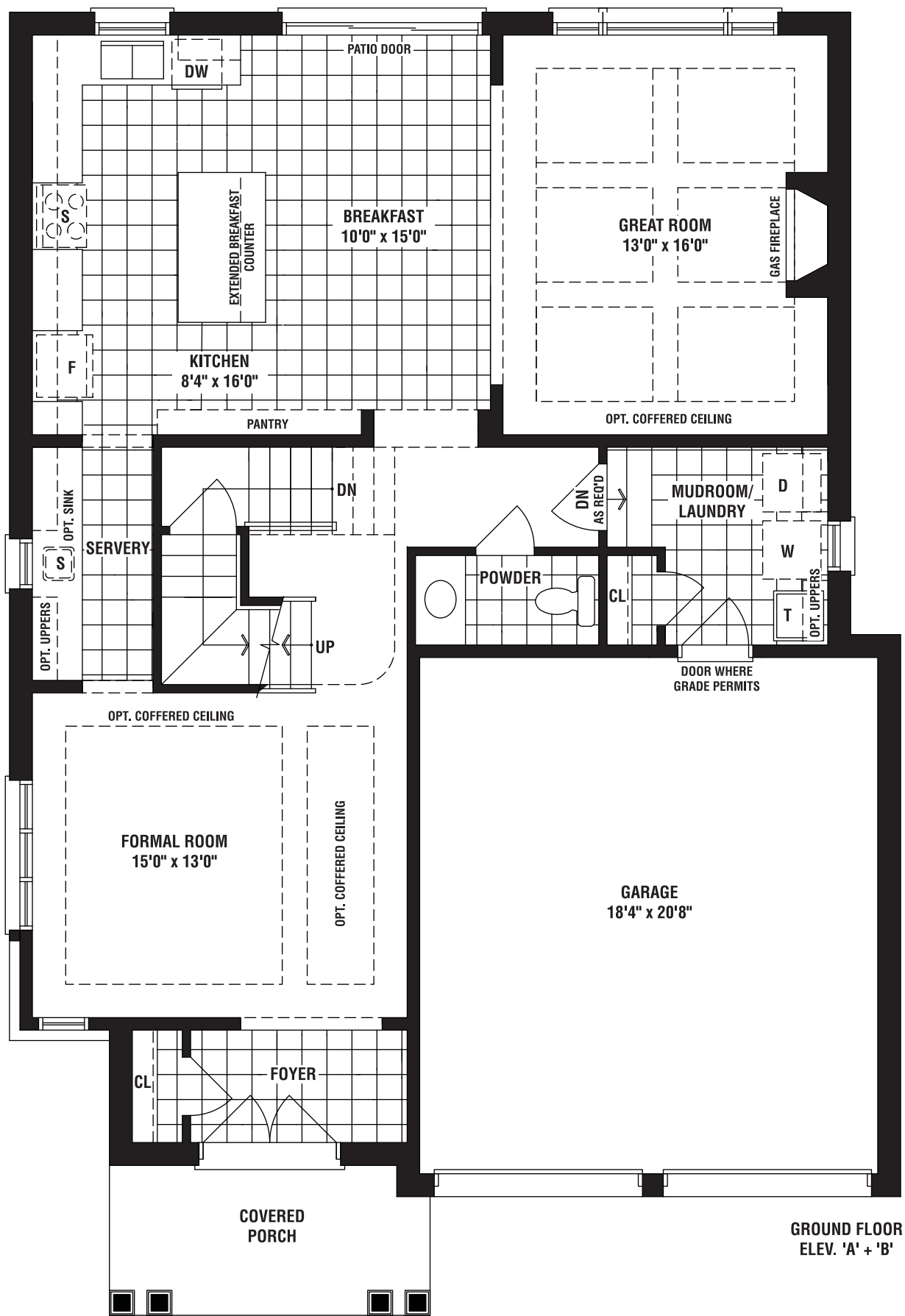
Caledon Trails A MASTERPLANNED COMMUNITY

HAWTHORNE 4201 A 2655 SQ. FT.

HAWTHORNE

A 2655 SQ. FT. B 2705 SQ. FT. C 2670 SQ. FT.

4 BEDROOMS



4201

MAPLE B | 2875 SQ. FT.



MAPLE C | 2885 SQ. FT.




 WHERE THE HORIZON MEETS HOME.



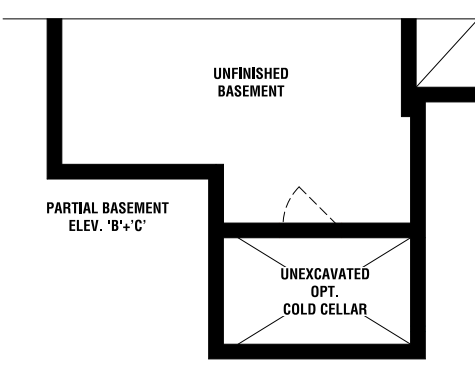
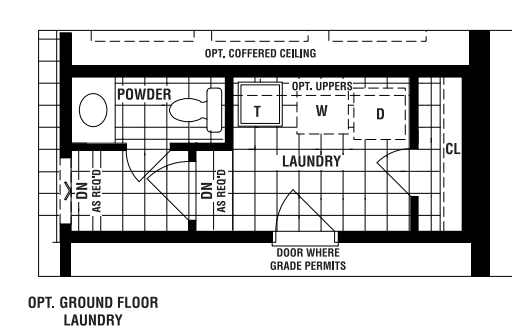
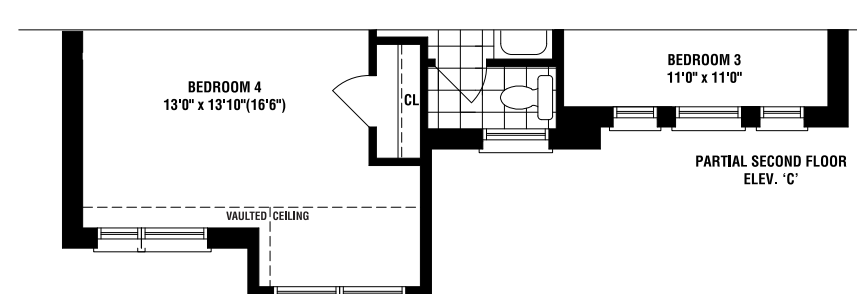
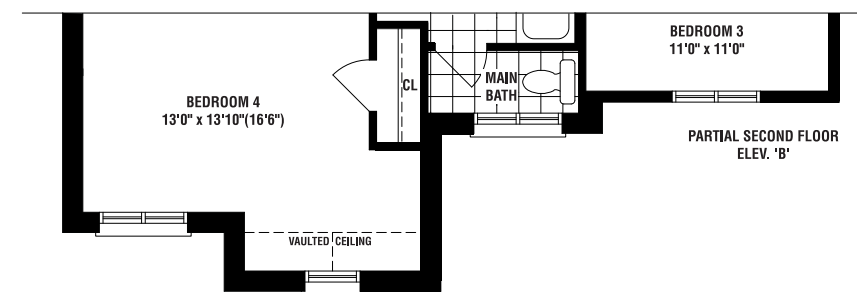
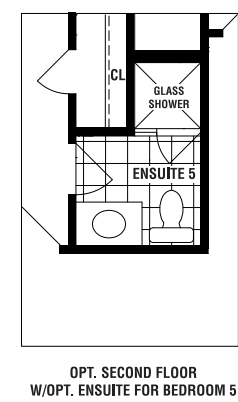
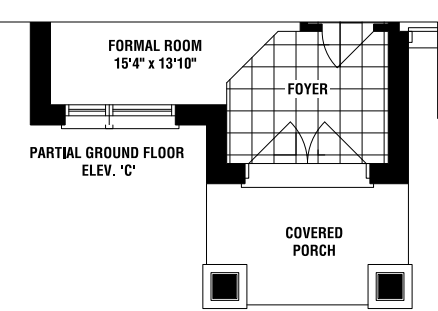
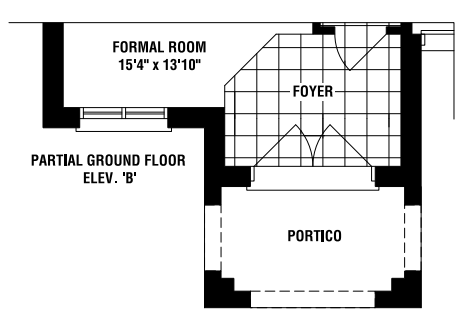
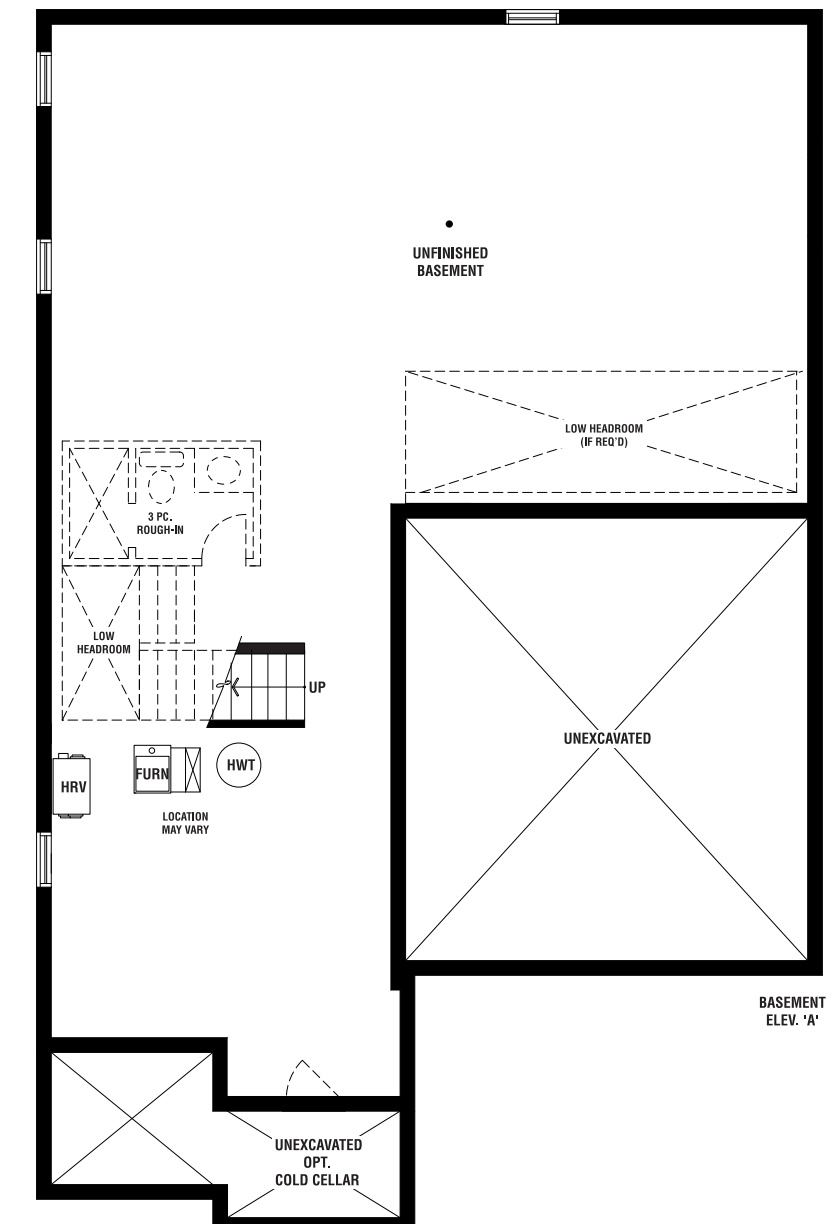
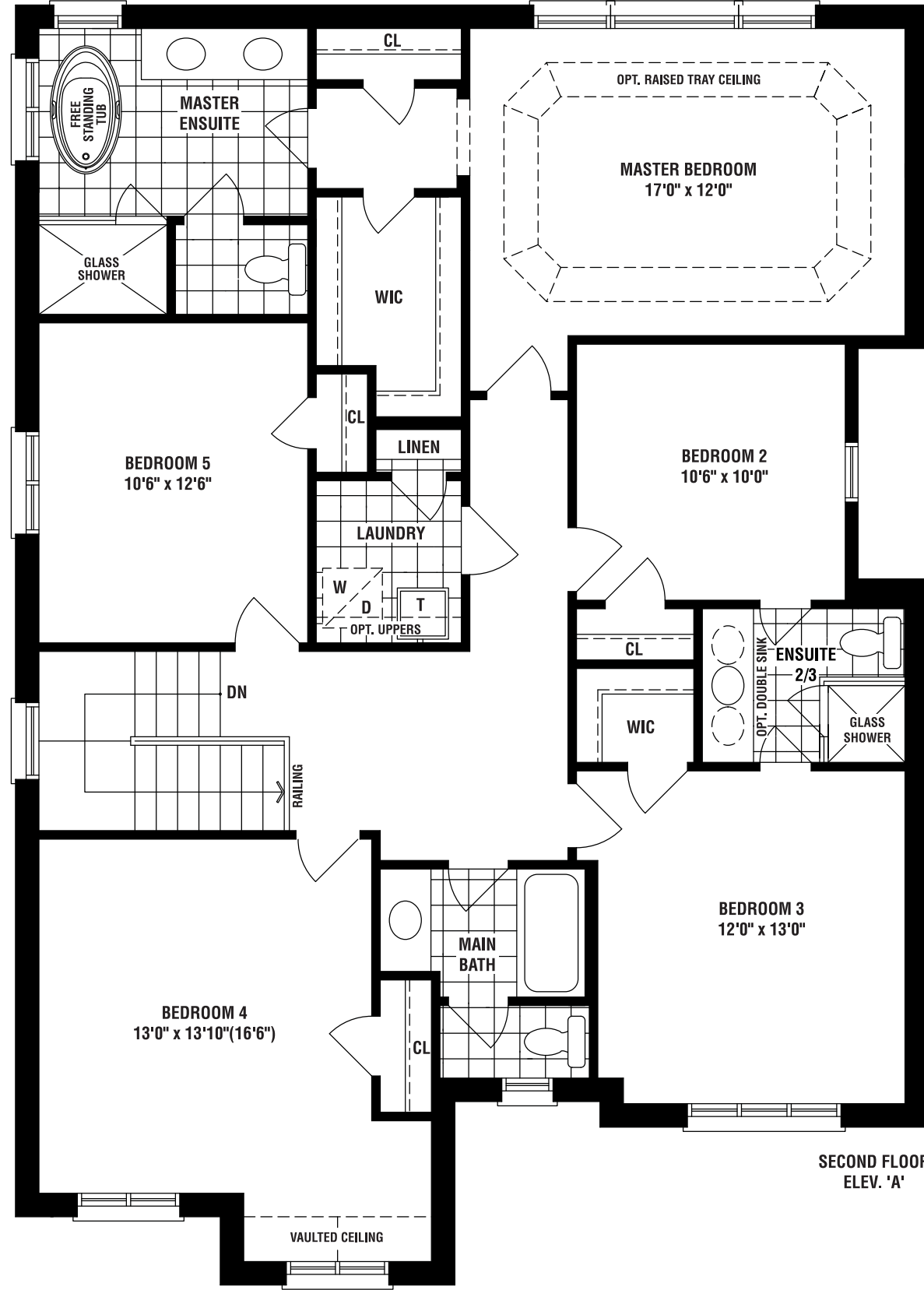
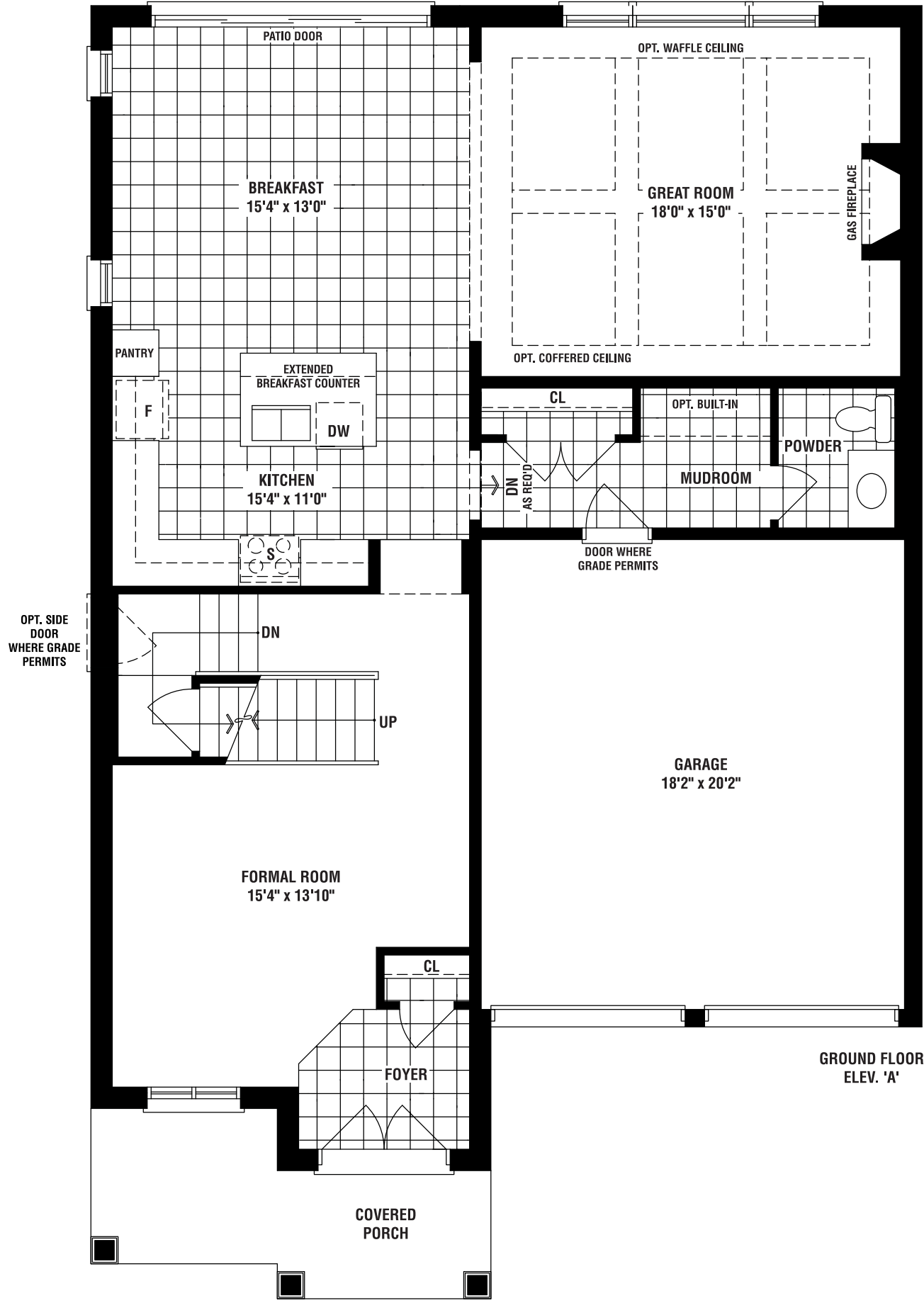
A

42

MAPLE

A 2900 SQ. FT. B 2875 SQ. FT. C 2885 SQ. FT.

5 BEDROOMS



JUNIPER B | 3258 SQ. FT.



JUNIPER C | 3250 SQ. FT.



A

42

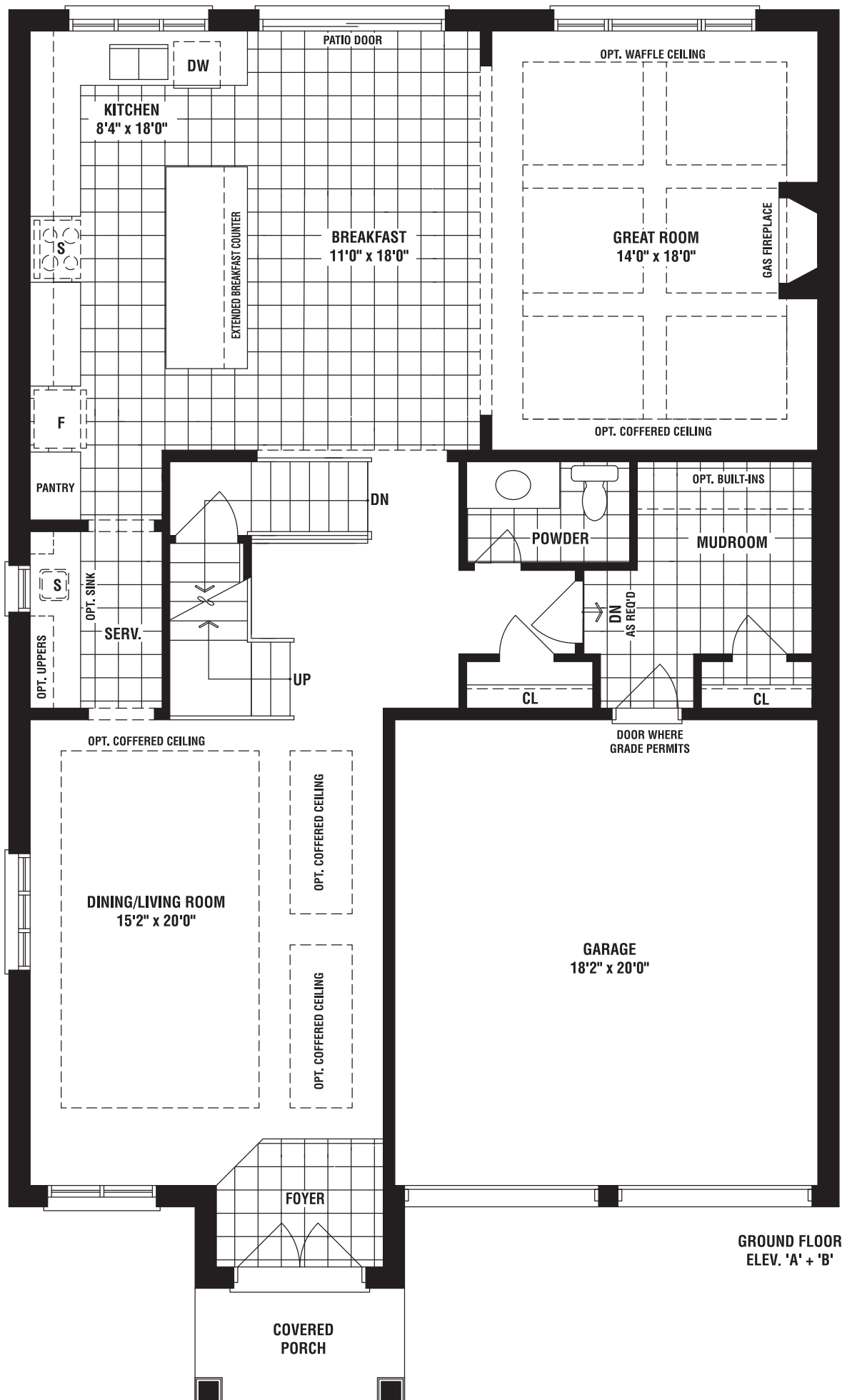


WHERE THE HORIZON MEETS HOME.

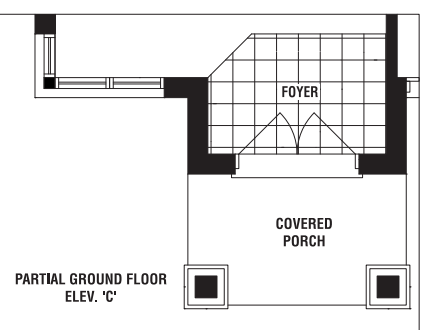
JUNIPER

A 3260 SQ. FT. B 3258 SQ. FT. C 3250 SQ. FT.

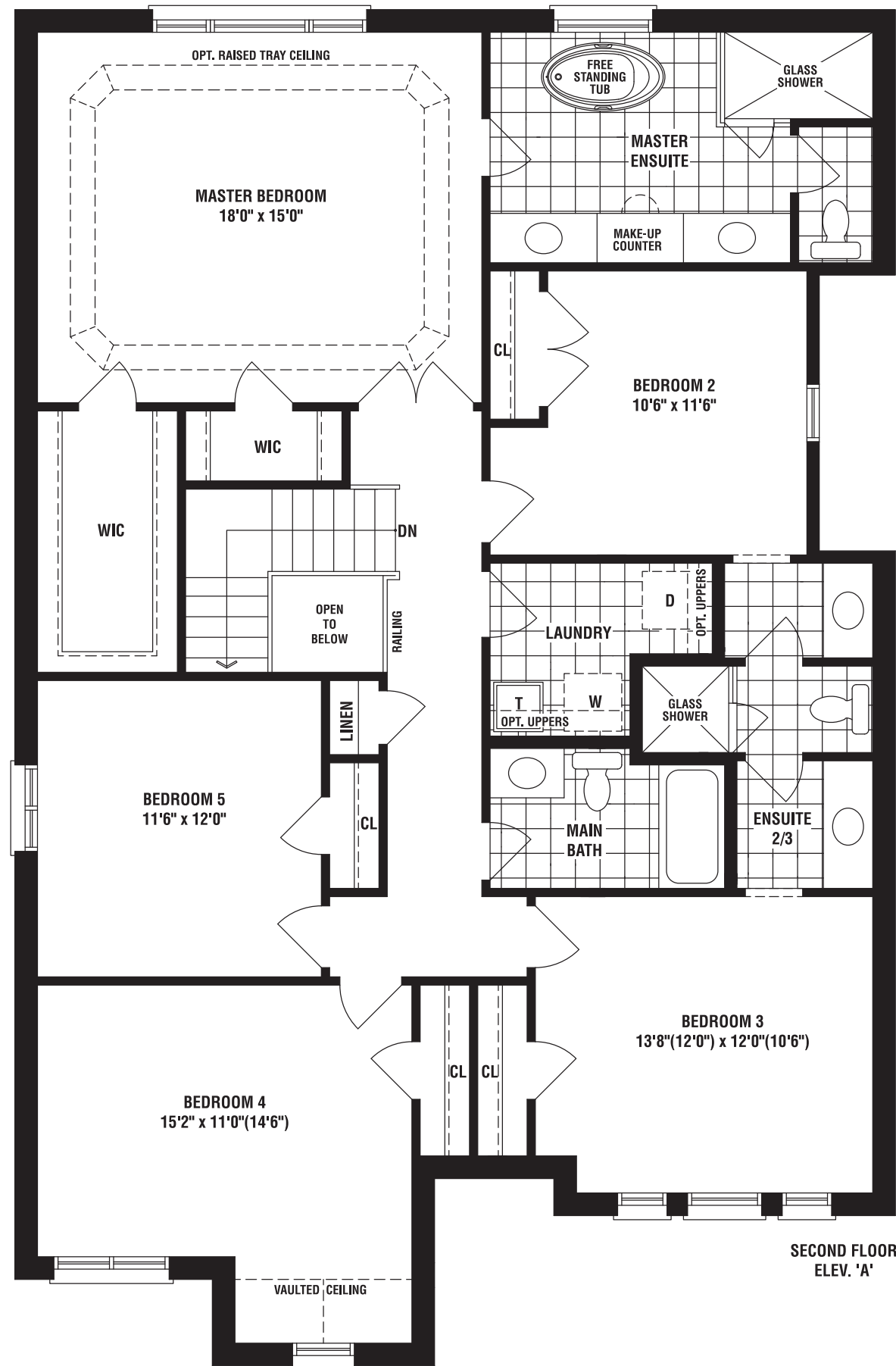
5 BEDROOMS



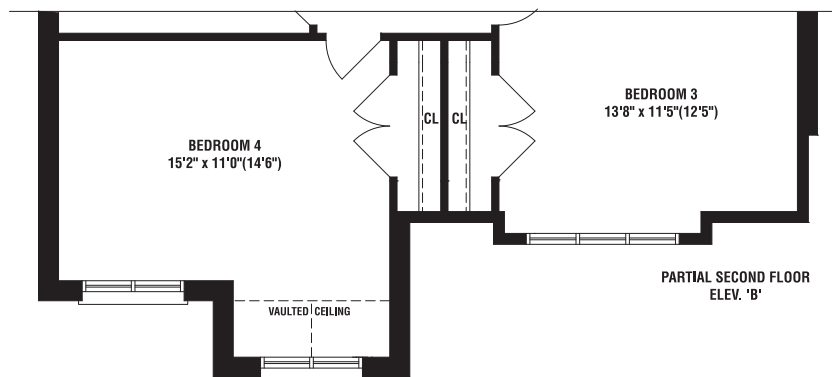
GROUND FLOOR ELEV. 'A' + 'B'



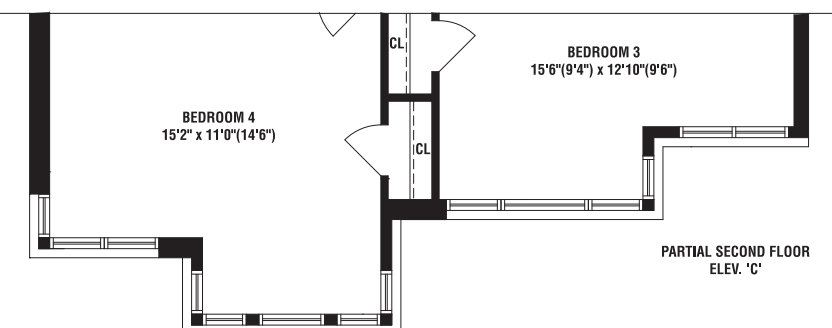
PARTIAL GROUND FLOOR ELEV. 'C'



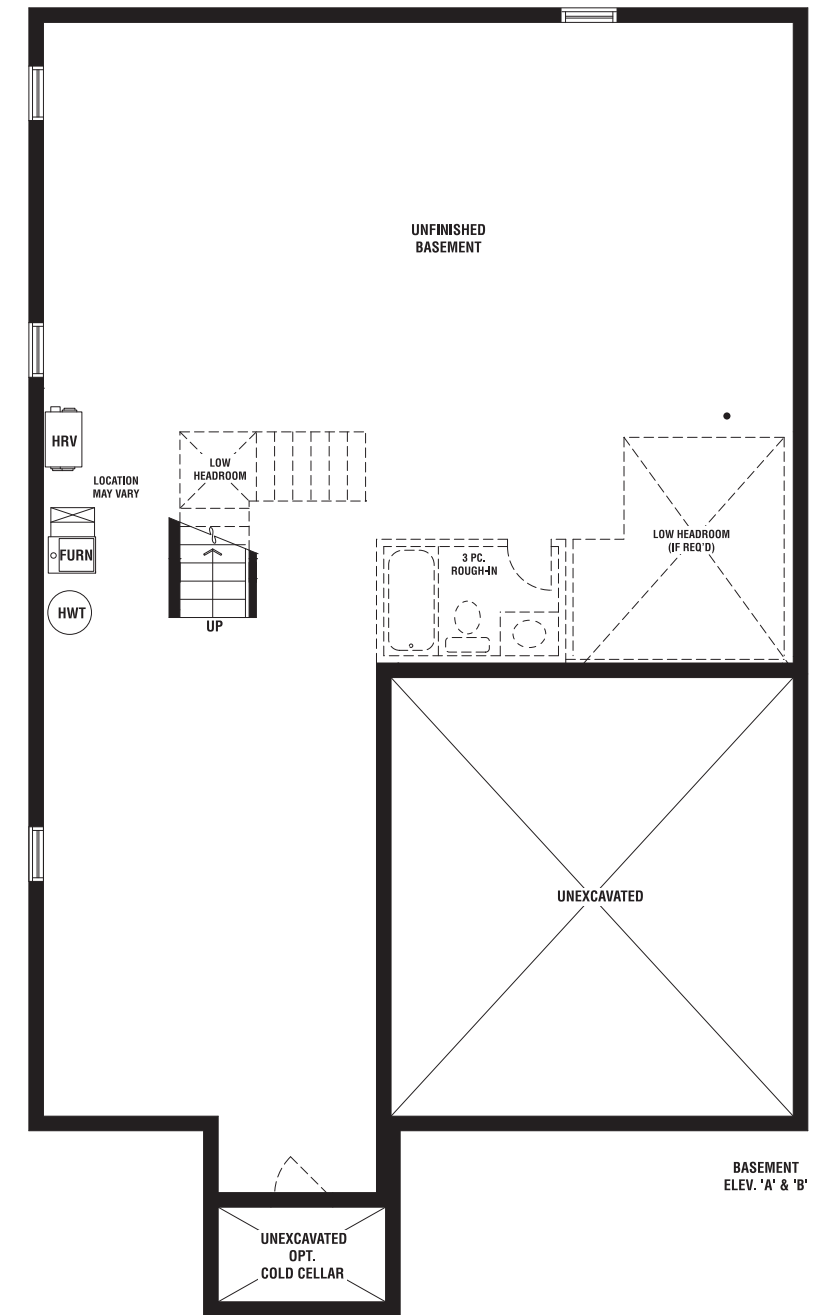
SECOND FLOOR ELEV. 'A'



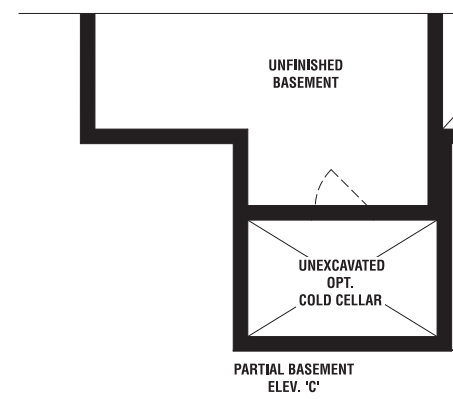
PARTIAL SECOND FLOOR ELEV. 'B'



PARTIAL SECOND FLOOR ELEV. 'C'



BASEMENT ELEV. 'A' & 'B'



PARTIAL BASEMENT ELEV. 'C'

4204

ELM B | 3500 SQ. FT.



ELM C | 3485 SQ. FT.



A

42



WHERE THE HORIZON MEETS HOME.



LAUREL B | 2820 SQ. FT.



LAUREL C | 2800 SQ. FT.



A

42

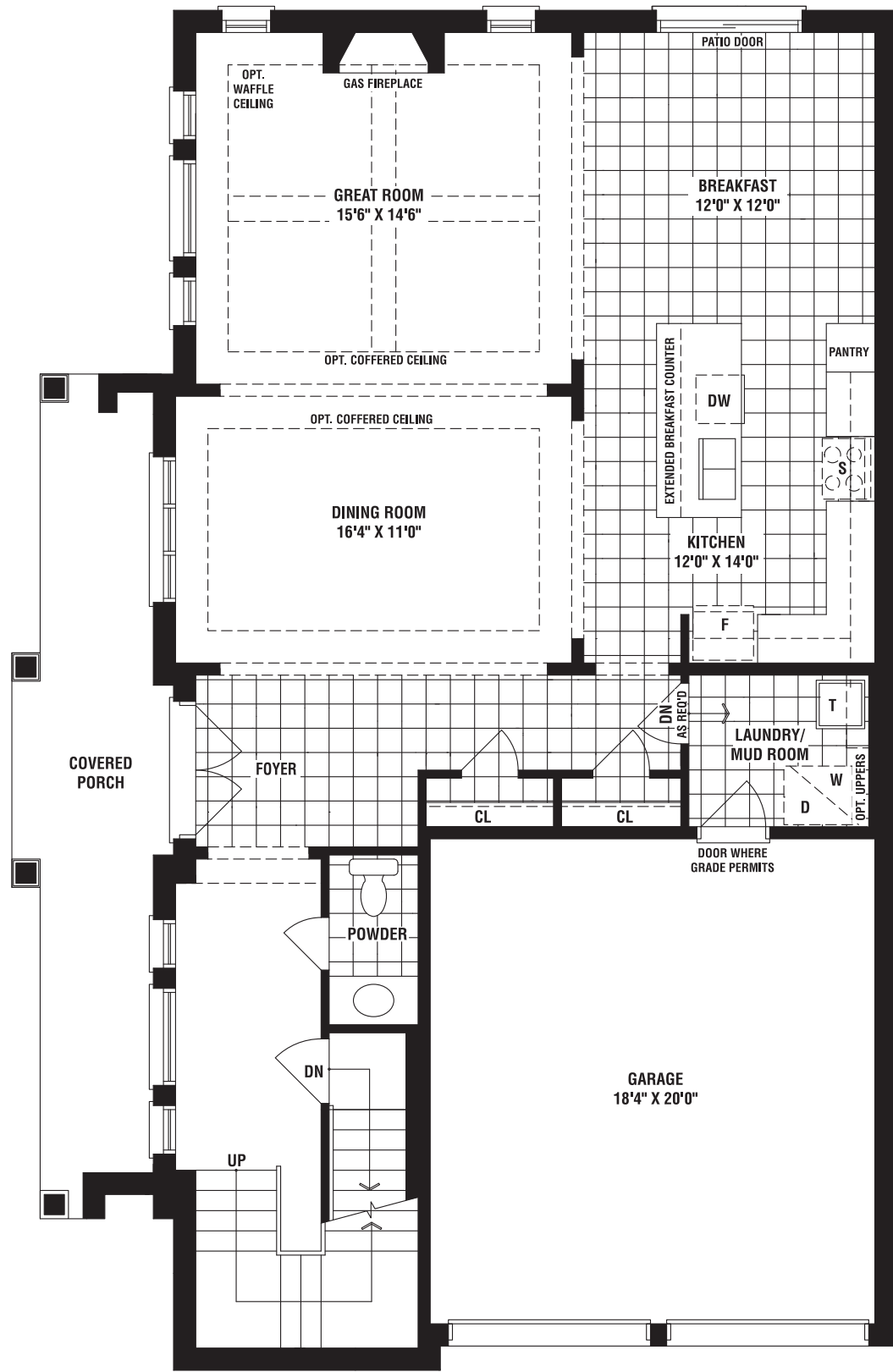


WHERE THE HORIZON MEETS HOME.

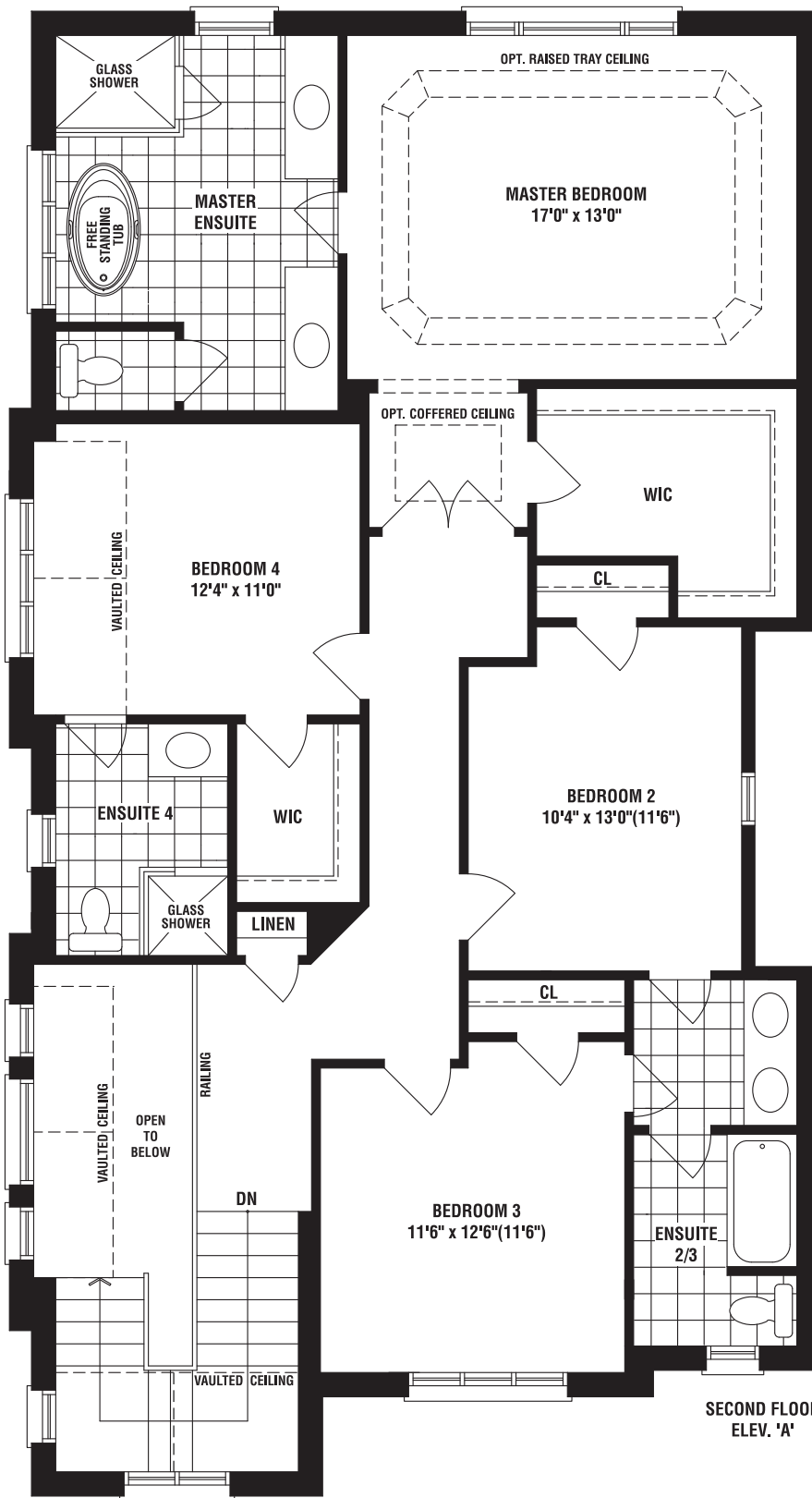
LAUREL

A 2810 SQ. FT. B 2820 SQ. FT. C 2800 SQ. FT.

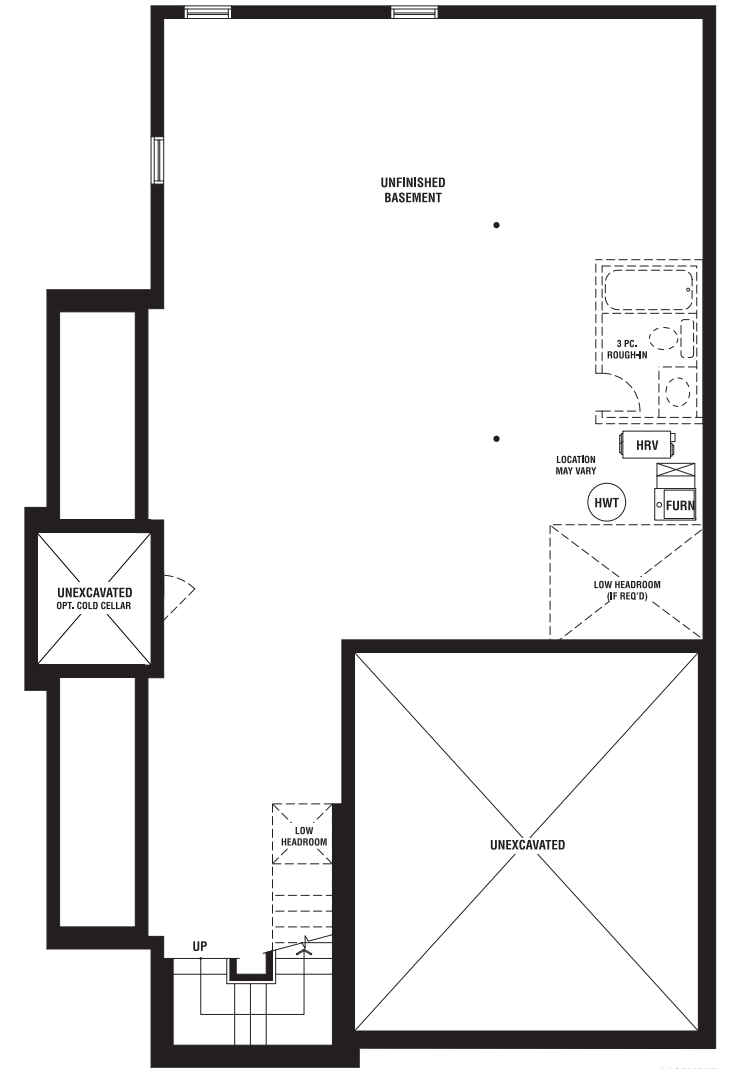
4 BEDROOMS



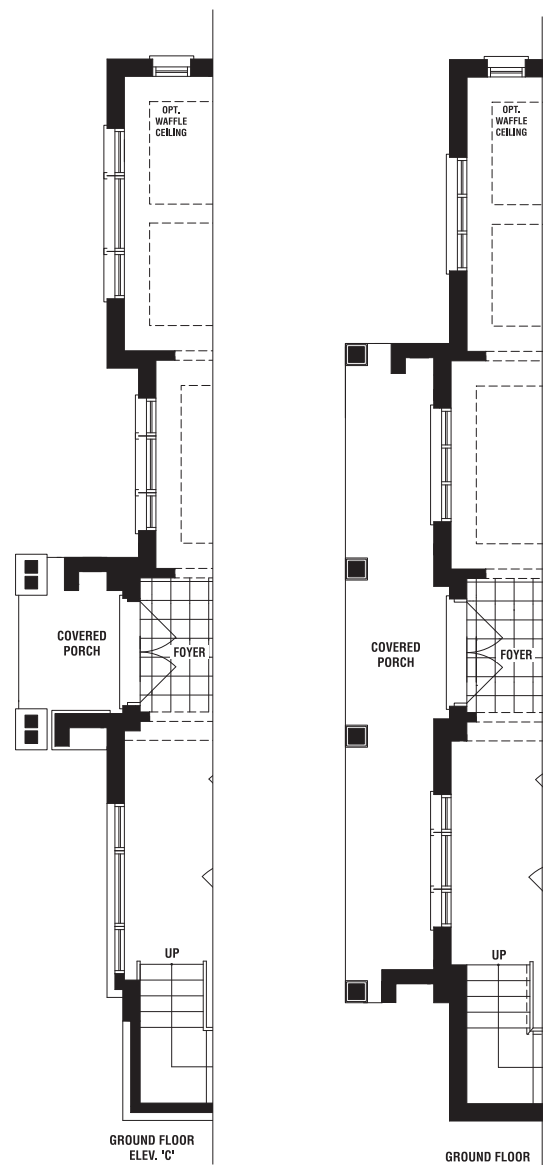
GROUND FLOOR
ELEV. 'A'



SECOND FLOOR
ELEV. 'A'

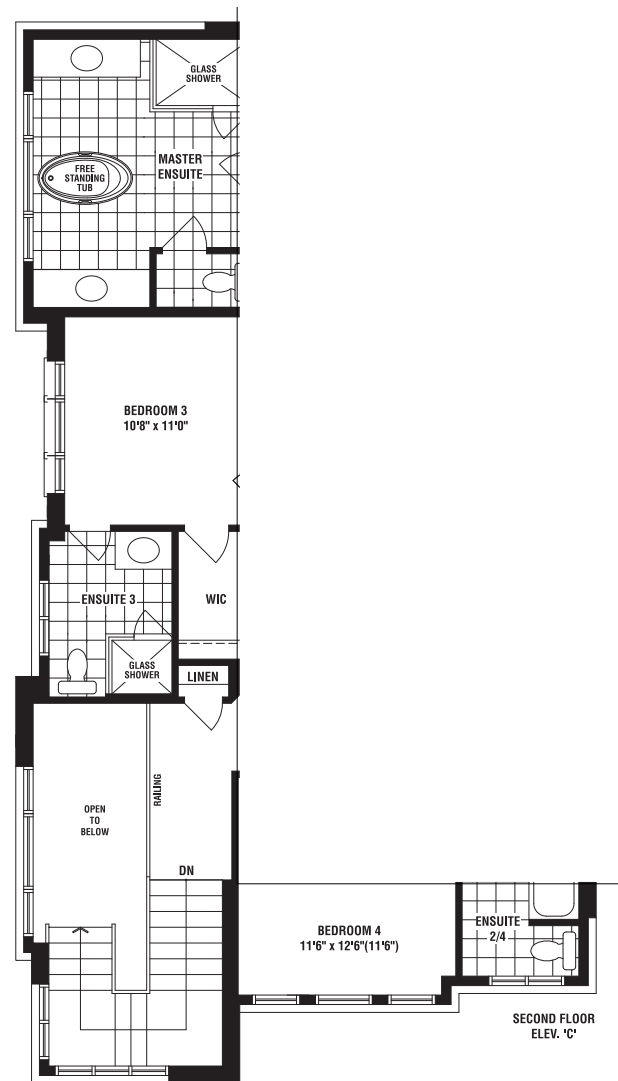


BASEMENT
ELEV. 'A'



GROUND FLOOR
ELEV. 'B'

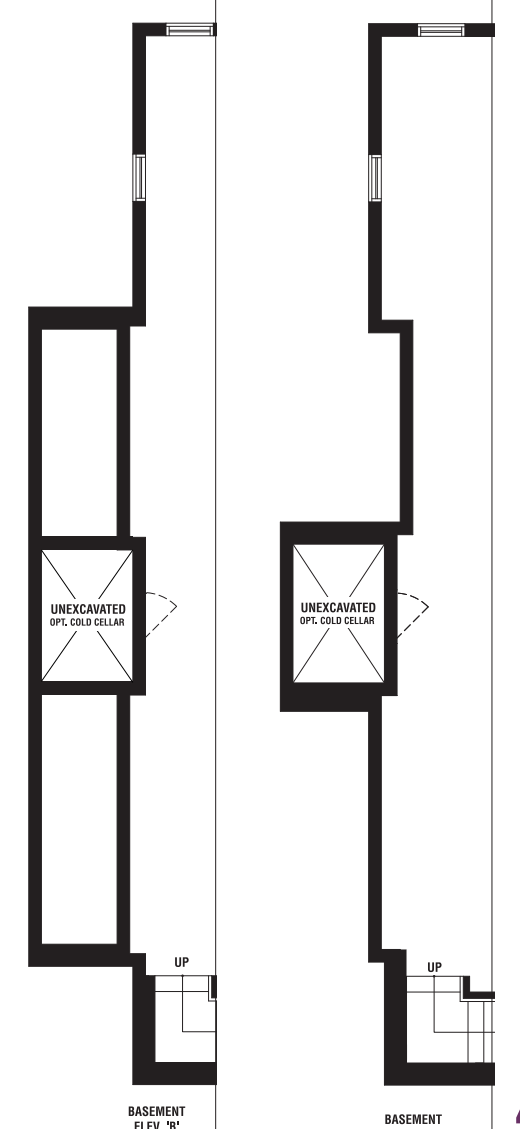
GROUND FLOOR
ELEV. 'B'



SECOND FLOOR
ELEV. 'B'



SECOND FLOOR
ELEV. 'C'



BASEMENT
ELEV. 'C'

BASEMENT
ELEV. 'C'

4206

ASTER B | 3004 SQ. FT.



ASTER C | 3030 SQ. FT.



A

42

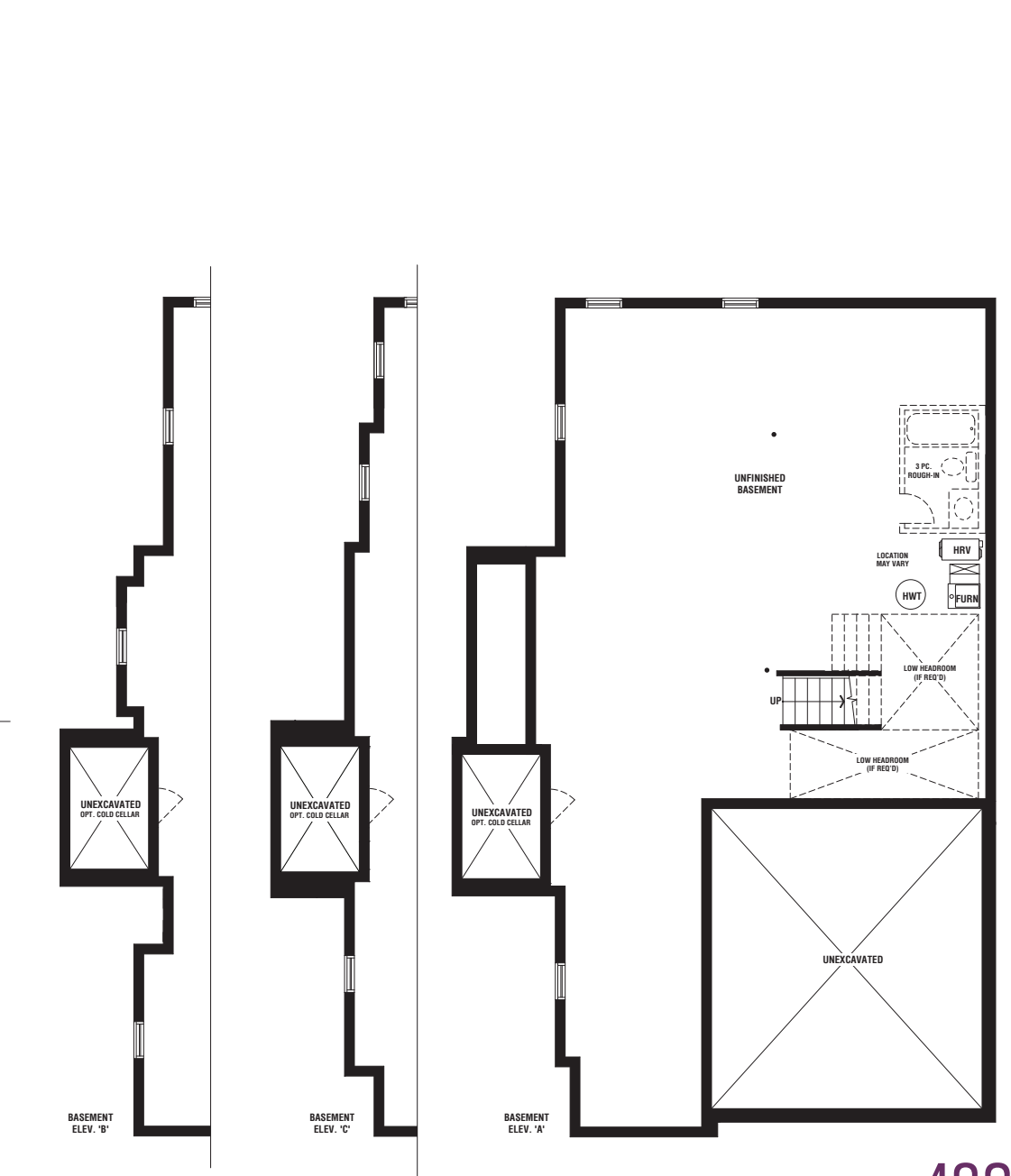
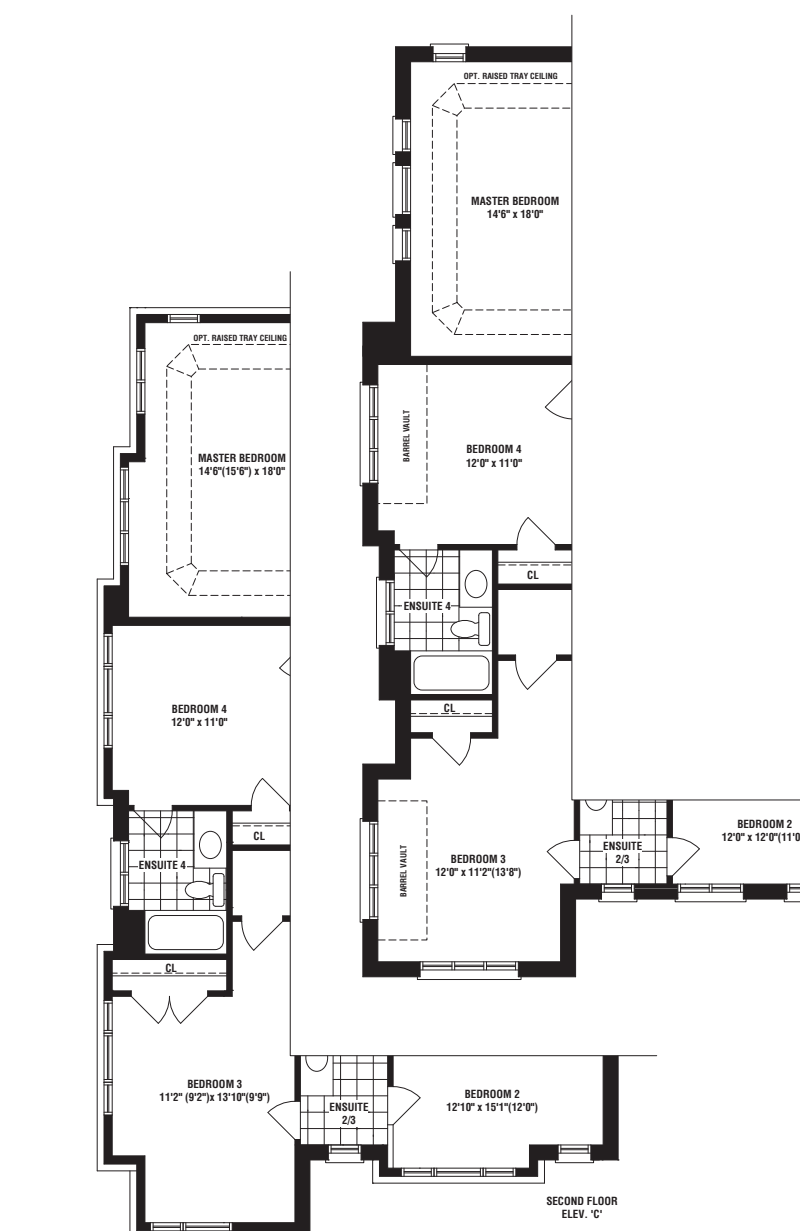
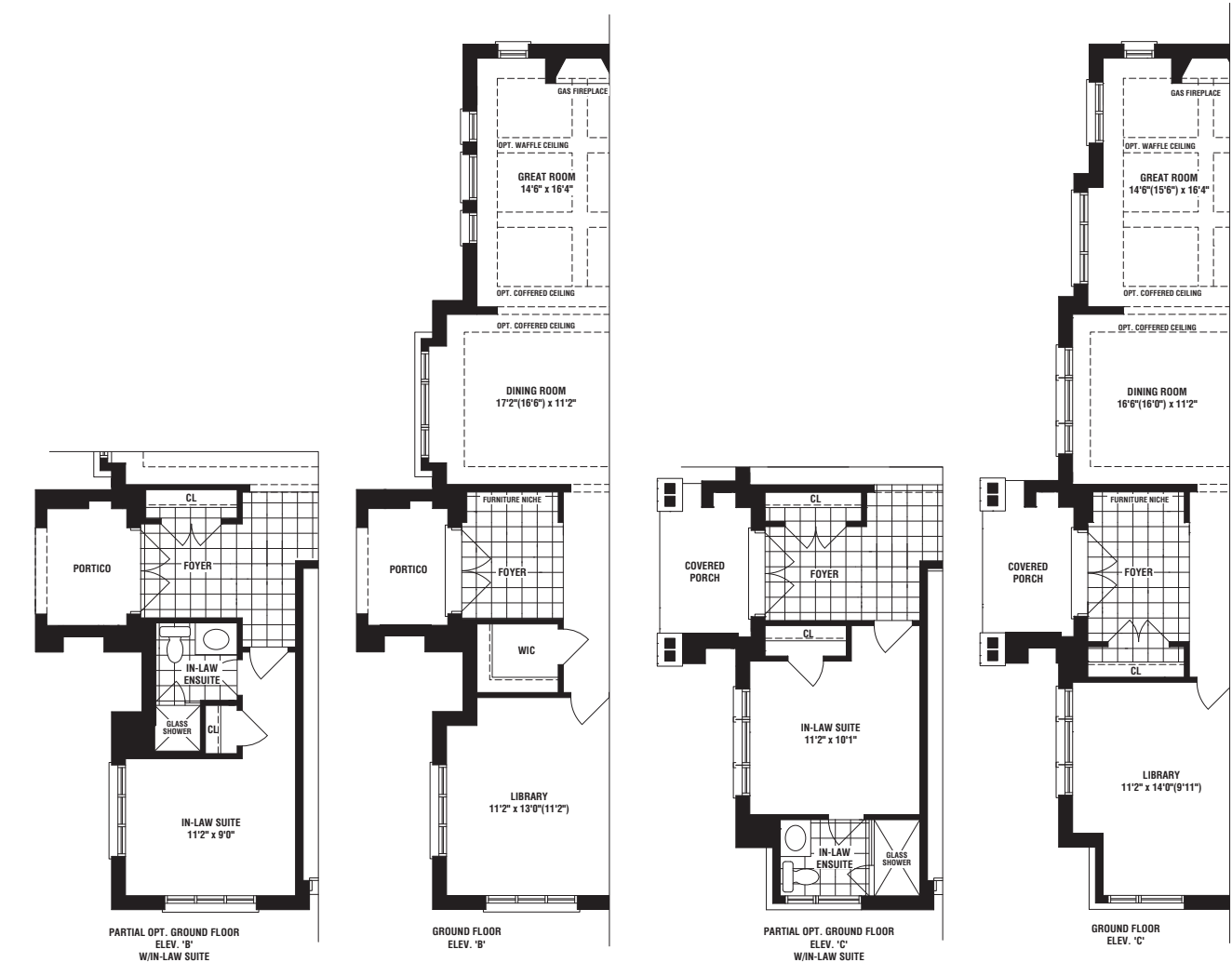
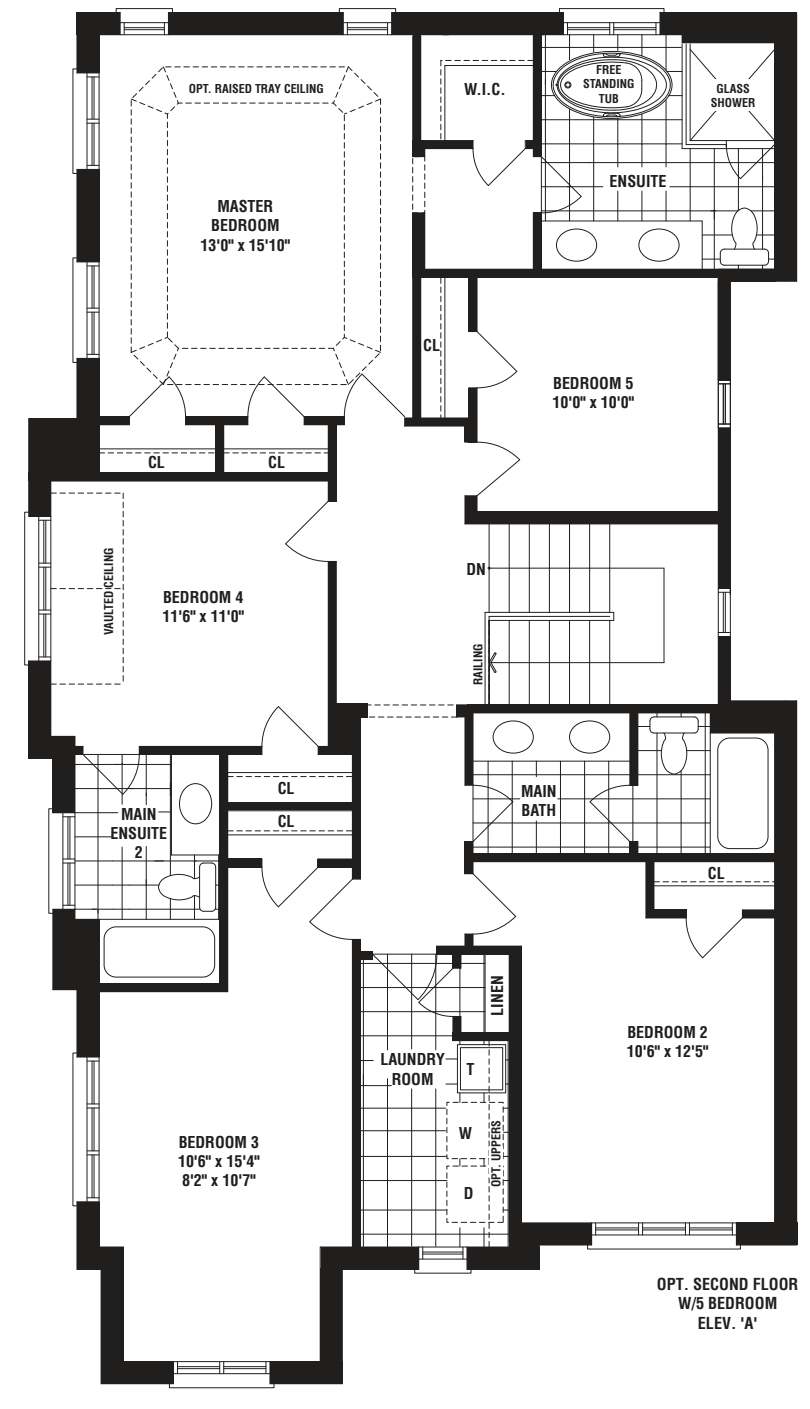
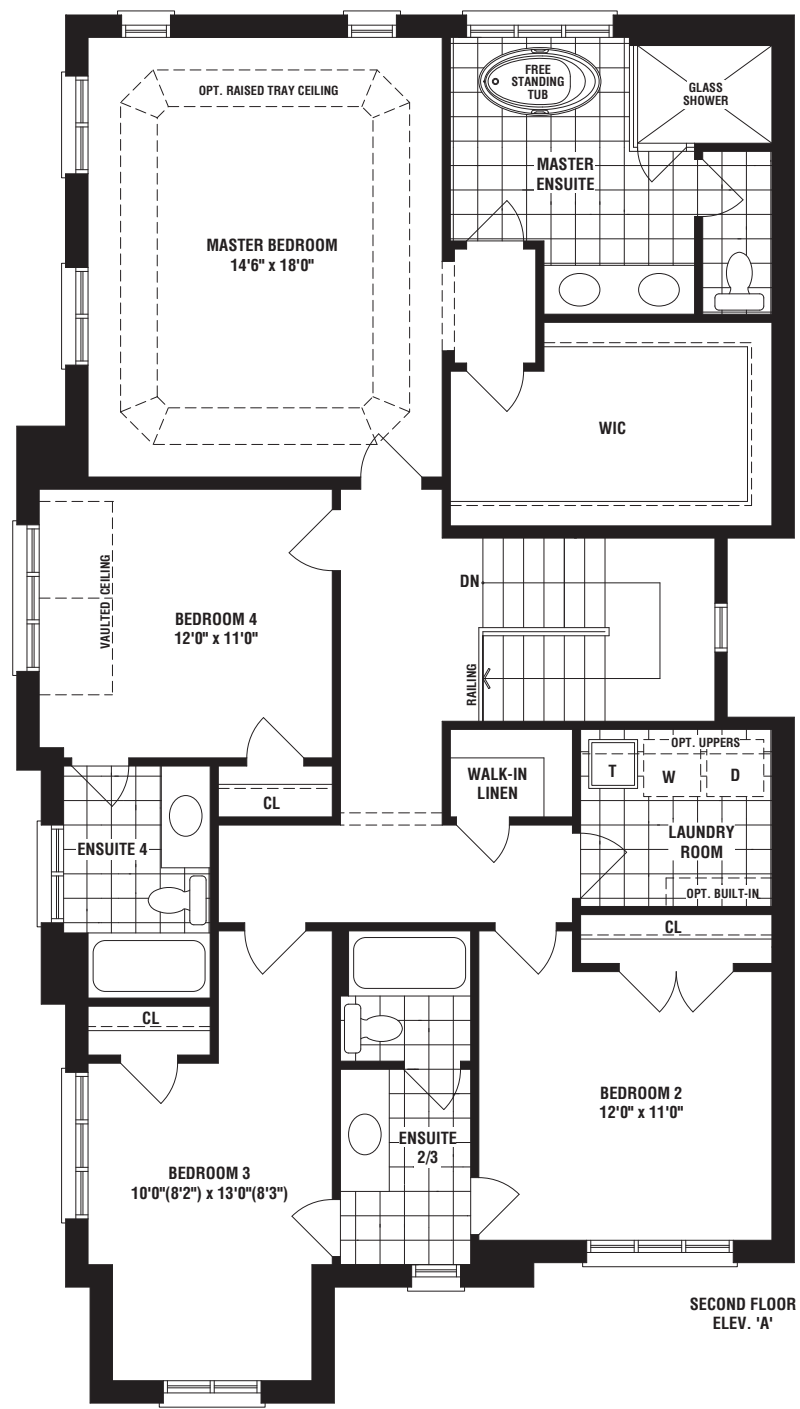
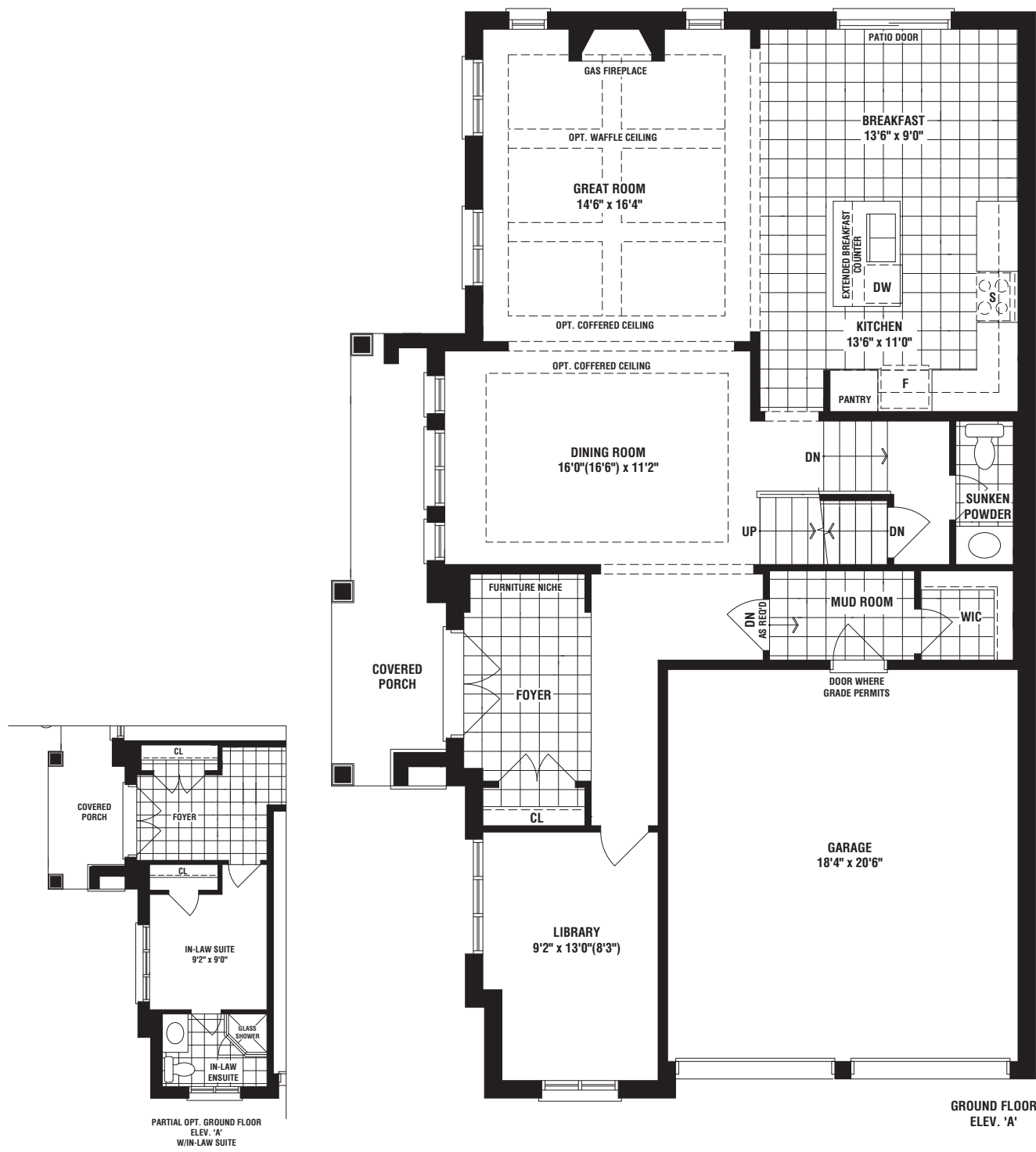


WHERE THE HORIZON MEETS HOME.

ASTER

A 2925 SQ. FT. B 3004 SQ. FT. C 3030 SQ. FT.

4 BEDROOMS
UP TO 2 ADDITIONAL BEDROOM OPTIONS AVAILABLE



4207

CYPRESS B | 3171 SQ. FT.



CYPRESS C | 3141 SQ. FT.



A

42

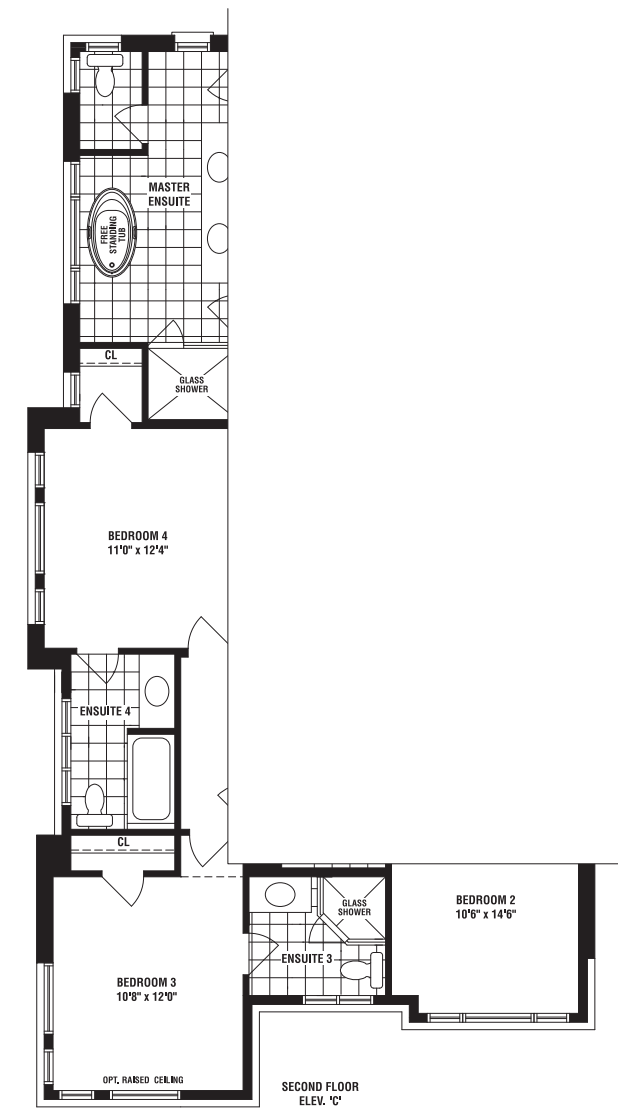
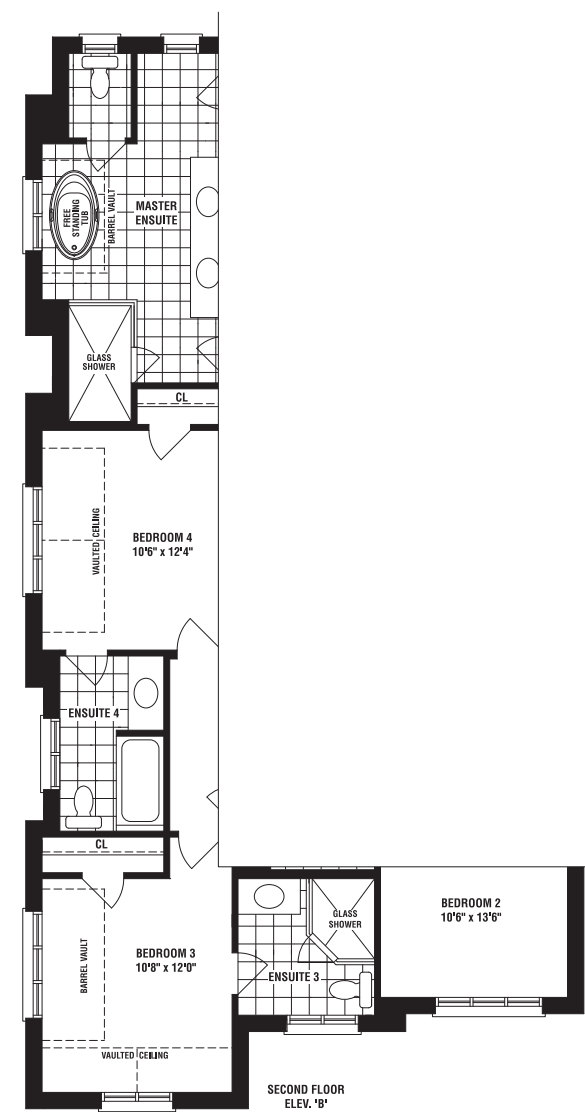
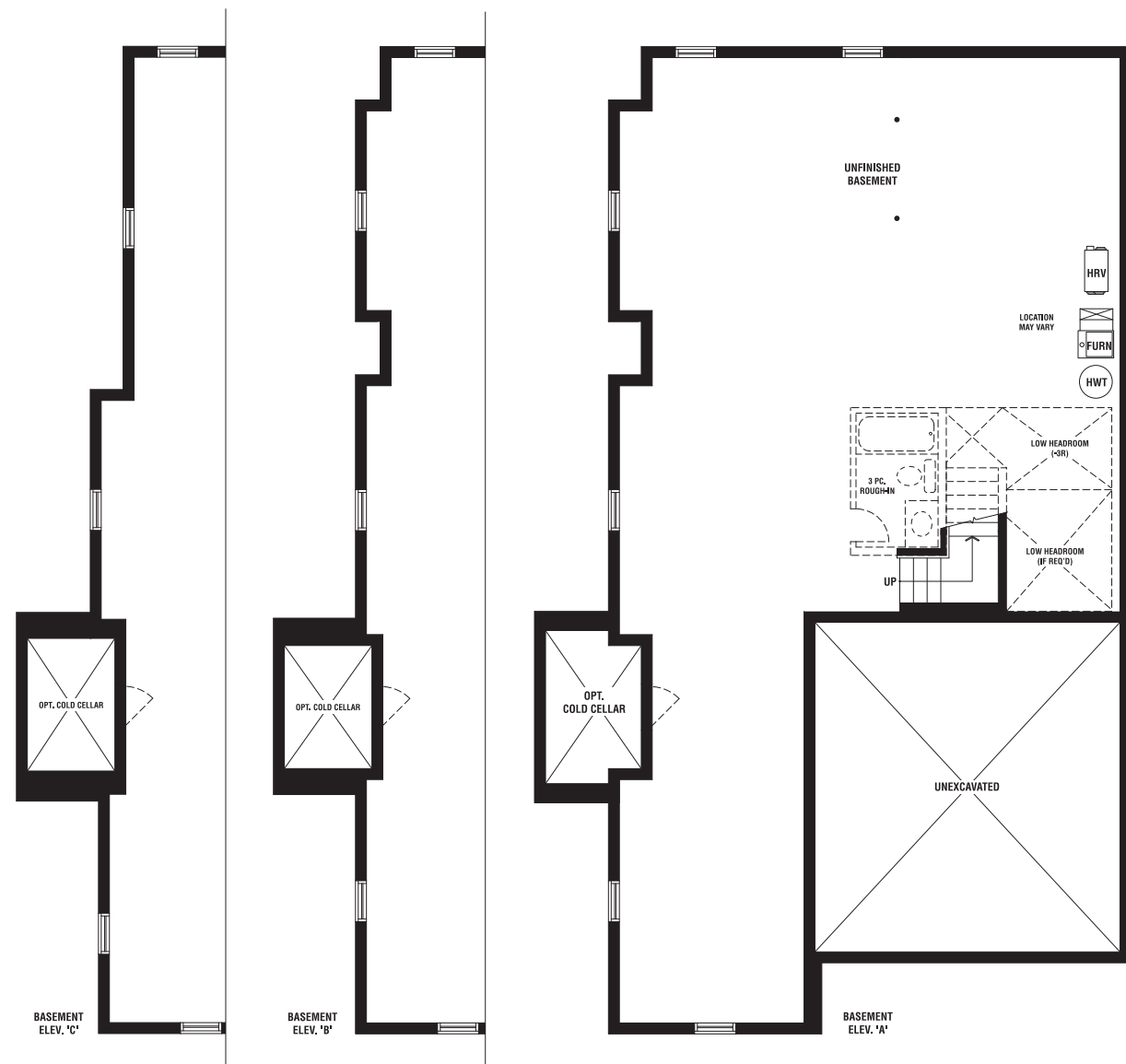
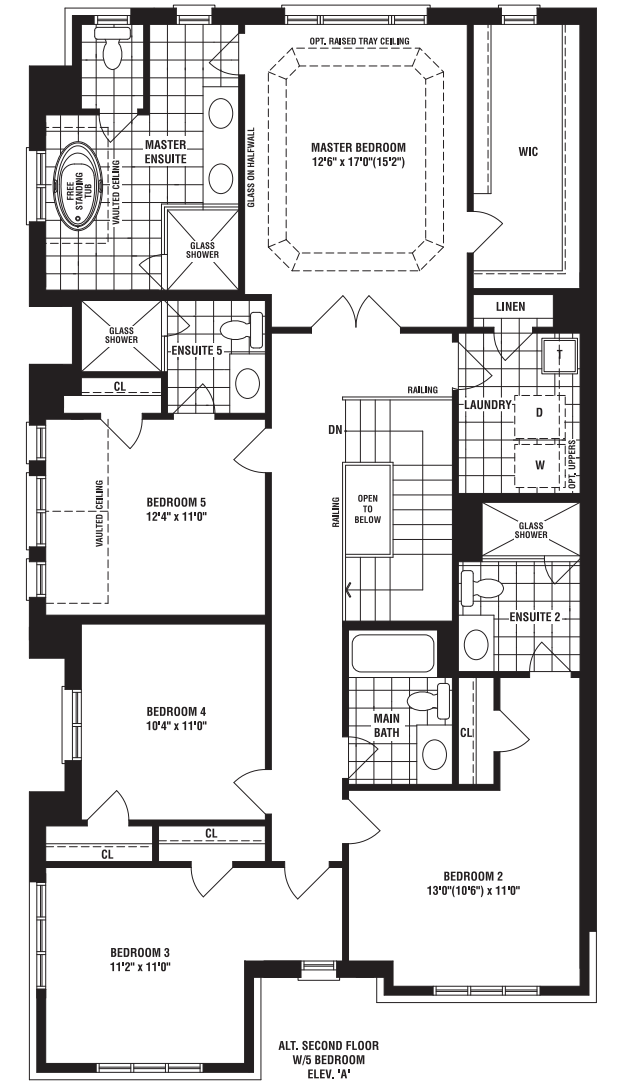
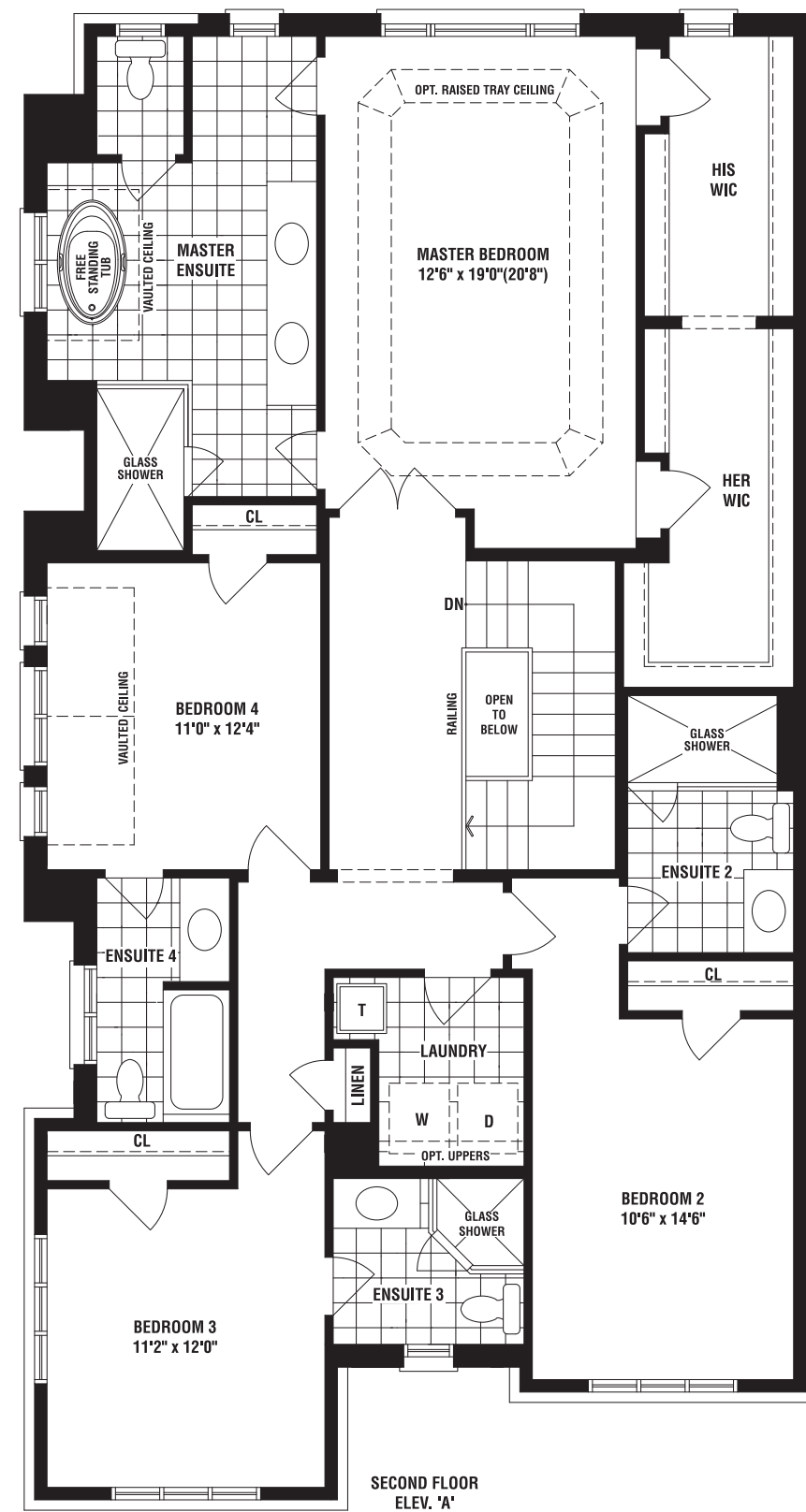
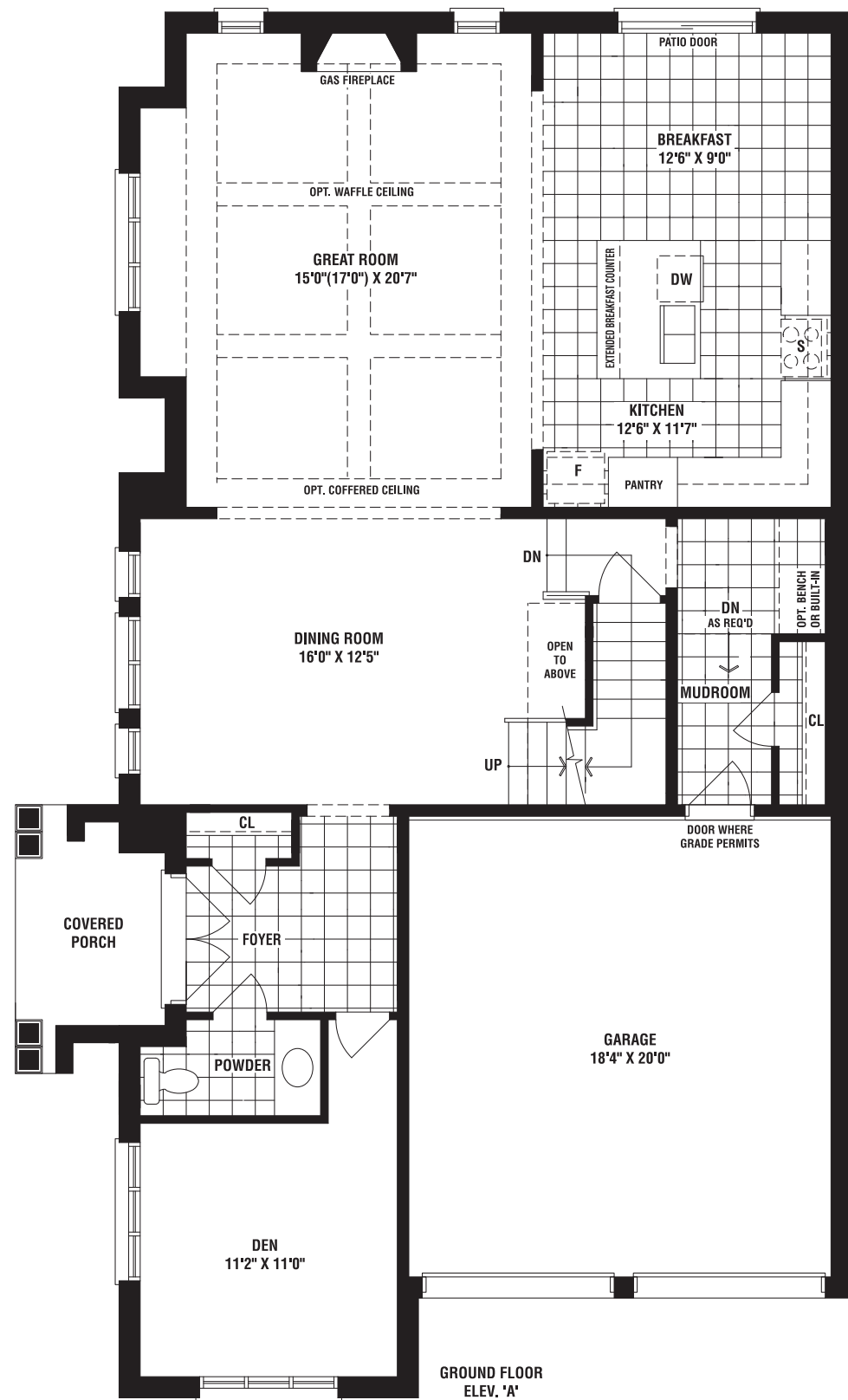
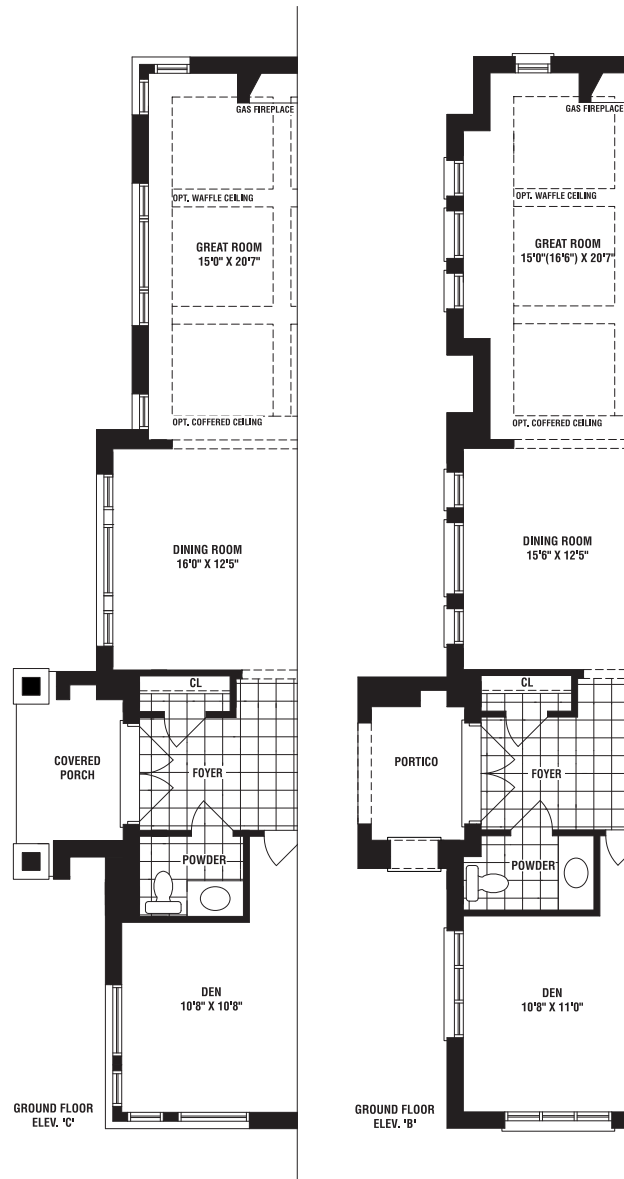


WHERE THE HORIZON MEETS HOME.

CYPRESS

A 3210 SQ. FT. B 3171 SQ. FT. C 3141 SQ. FT.

4 BEDROOMS
ADDITIONAL BEDROOM OPTION AVAILABLE



4208