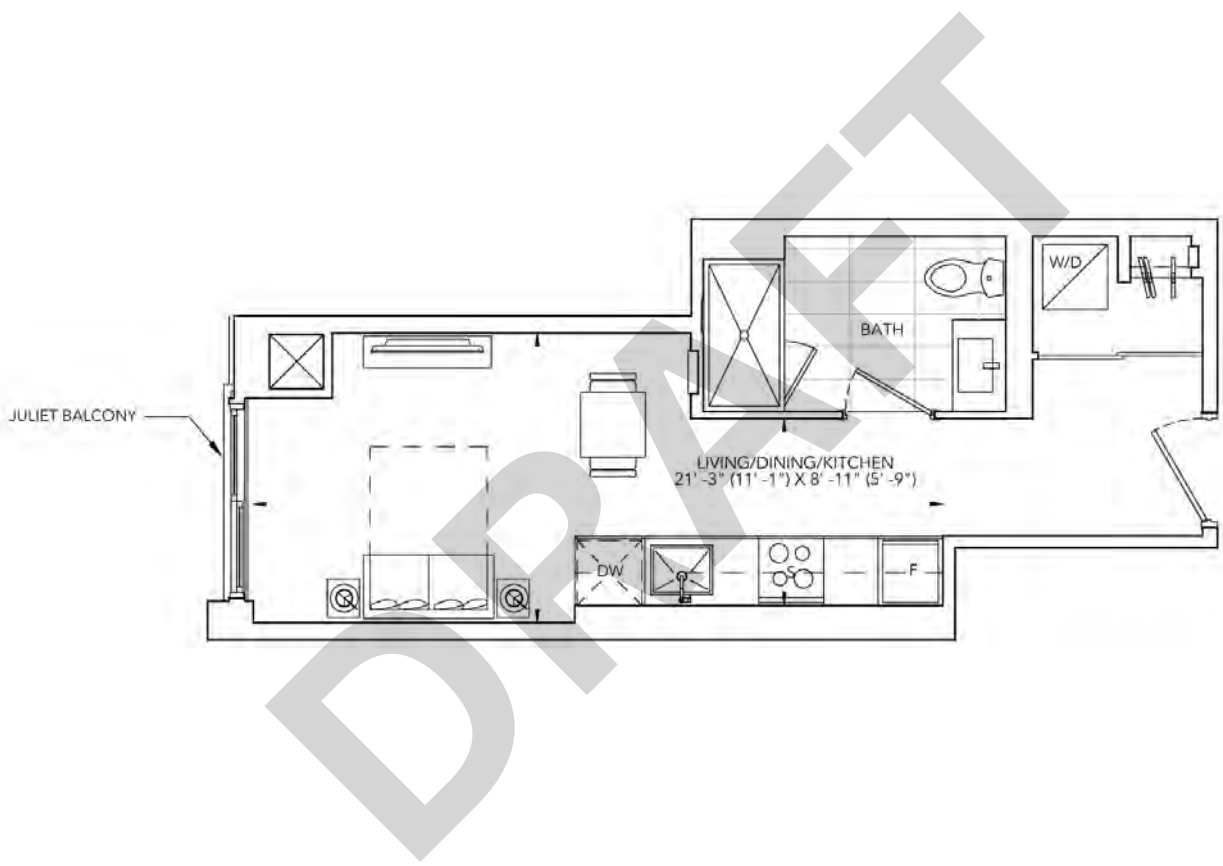


STUDIO
INTERIOR: 334 SQ.FT. | EXTERIOR: 0 SQ.FT
EXPOSURE: WEST

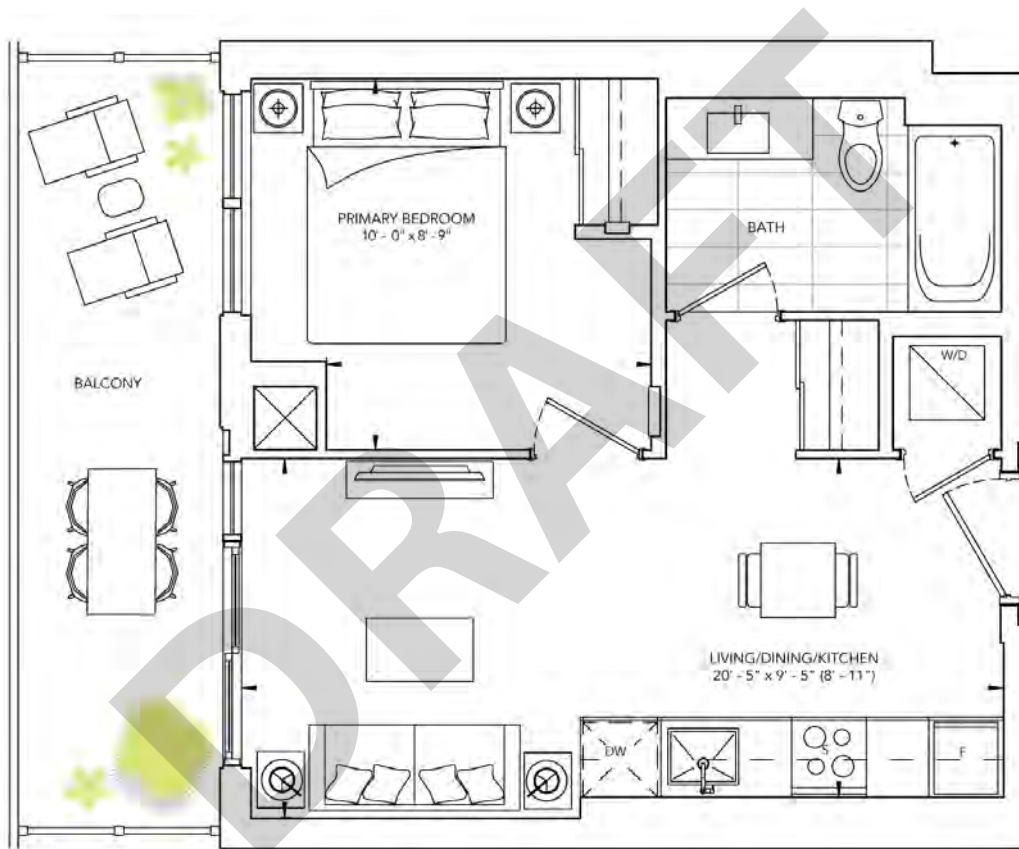


All prices, figures and materials are preliminary and are subject to change without notice E. &O. E. Note: For more information on the method used for calculating the floor area of any unit, reference should be made to Home Construction Regulatory Authority ("HCRA") Directive. May 2023

ONE BEDROOM

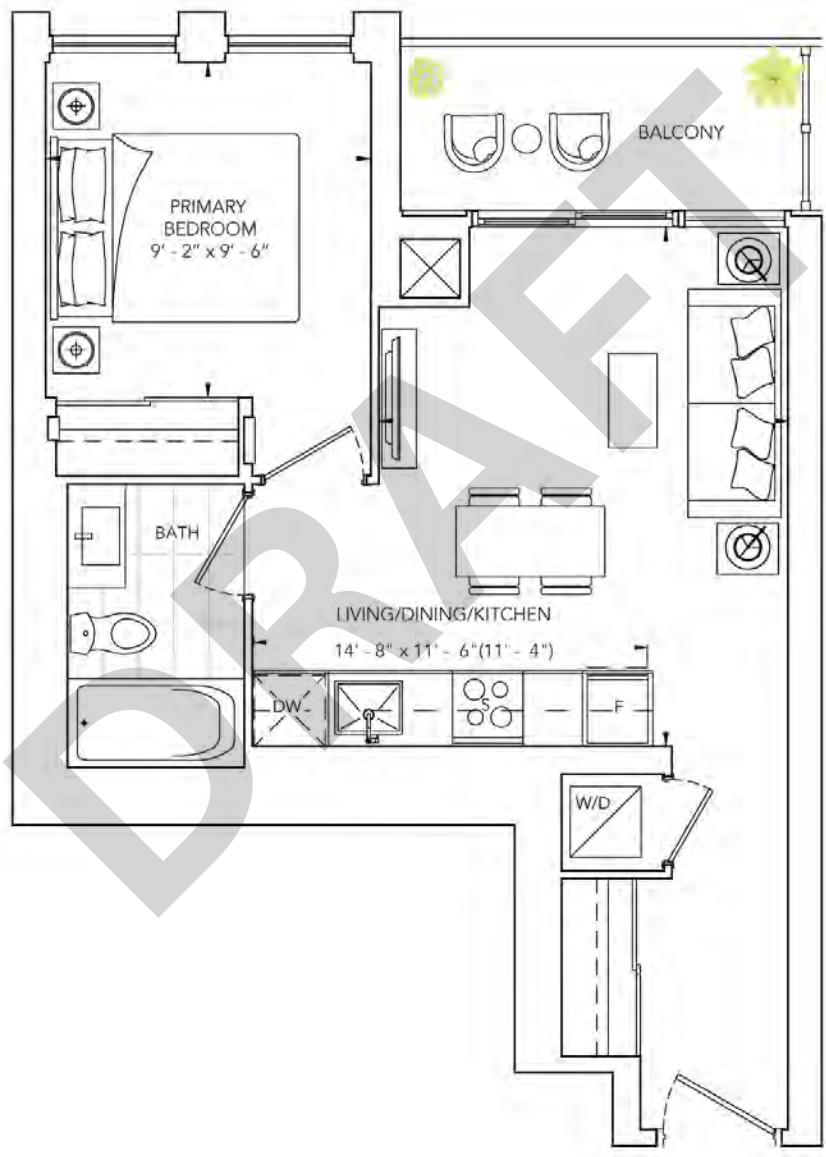
INTERIOR: 439 SQ.FT. | EXTERIOR: 102 SQ.FT

EXPOSURE: NORTH



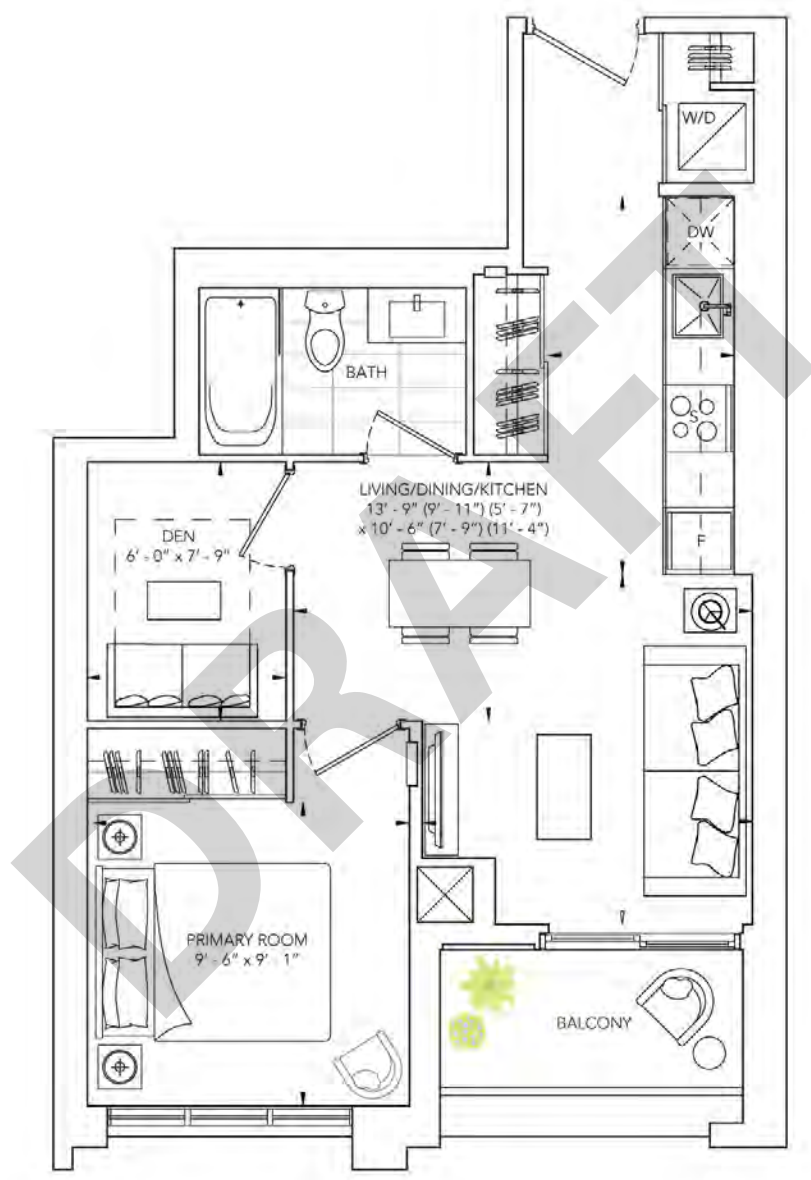
All prices, figures and materials are preliminary and are subject to change without notice E. &O. E. Note: For more information on the method used for calculating the floor area of any unit, reference should be made to Home Construction Regulatory Authority ("HCRA") Directive. May 2023

ONE BEDROOM
INTERIOR: 503 SQ.FT. | EXTERIOR: 45 SQ.FT
EXPOSURE: EAST



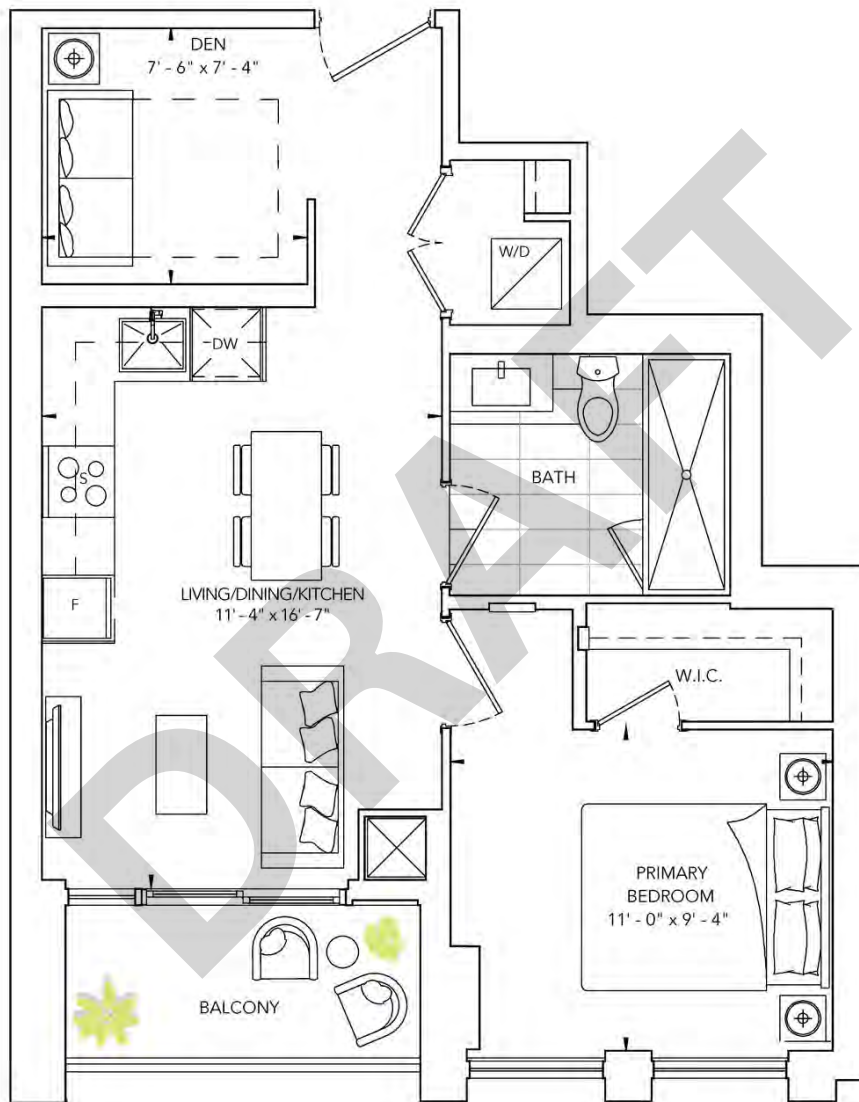
All prices, figures and materials are preliminary and are subject to change without notice E. & O. E. Note: For more information on the method used for calculating the floor area of any unit, reference should be made to Home Construction Regulatory Authority ("HCRA") Directive. May 2023

ONE BEDROOM + DEN, ONE BATH
INTERIOR: 540 SQ.FT. | EXTERIOR: 49 SQ.FT
EXPOSURE: SOUTH



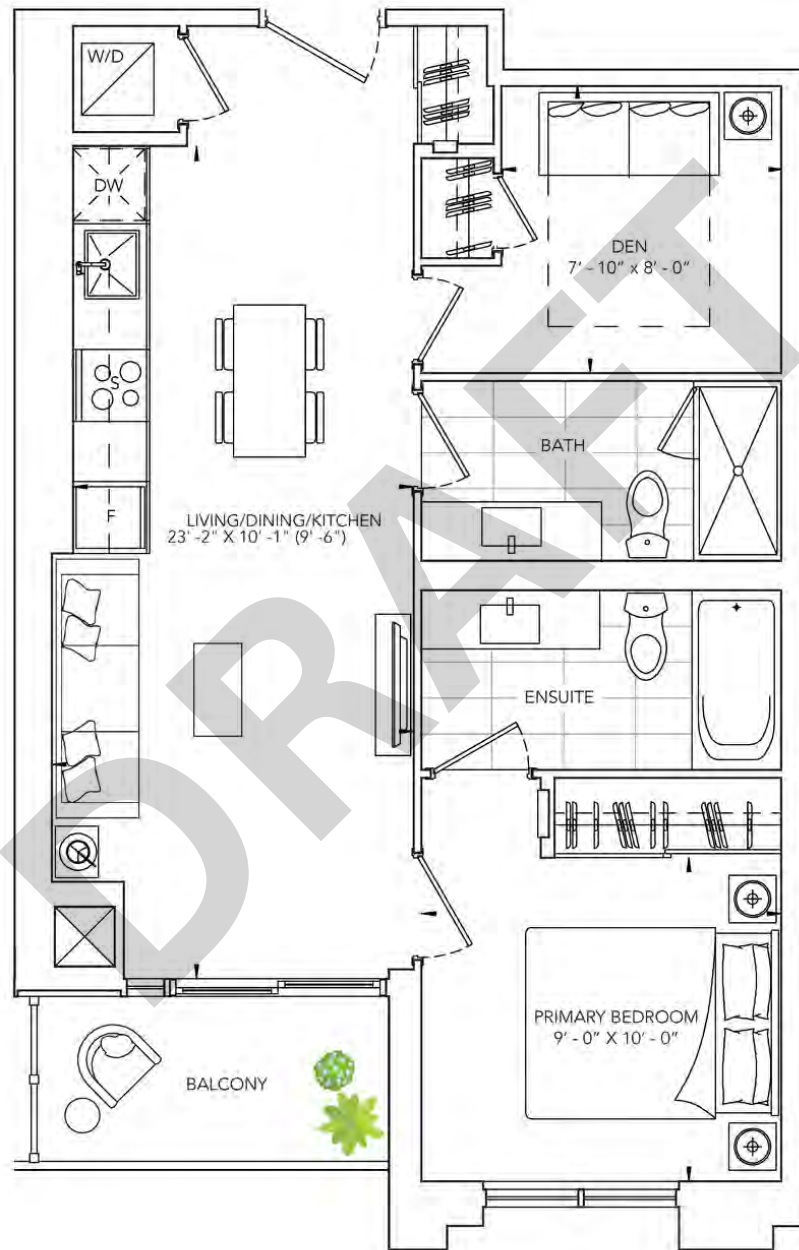
All prices, figures and materials are preliminary and are subject to change without notice E. & O. E. Note: For more information on the method used for calculating the floor area of any unit, reference should be made to Home Construction Regulatory Authority ("HCRA") Directive. May 2023

ONE BEDROOM + DEN, ONE BATH
INTERIOR: 561 SQ.FT. | EXTERIOR: 40 SQ.FT
EXPOSURE: WEST



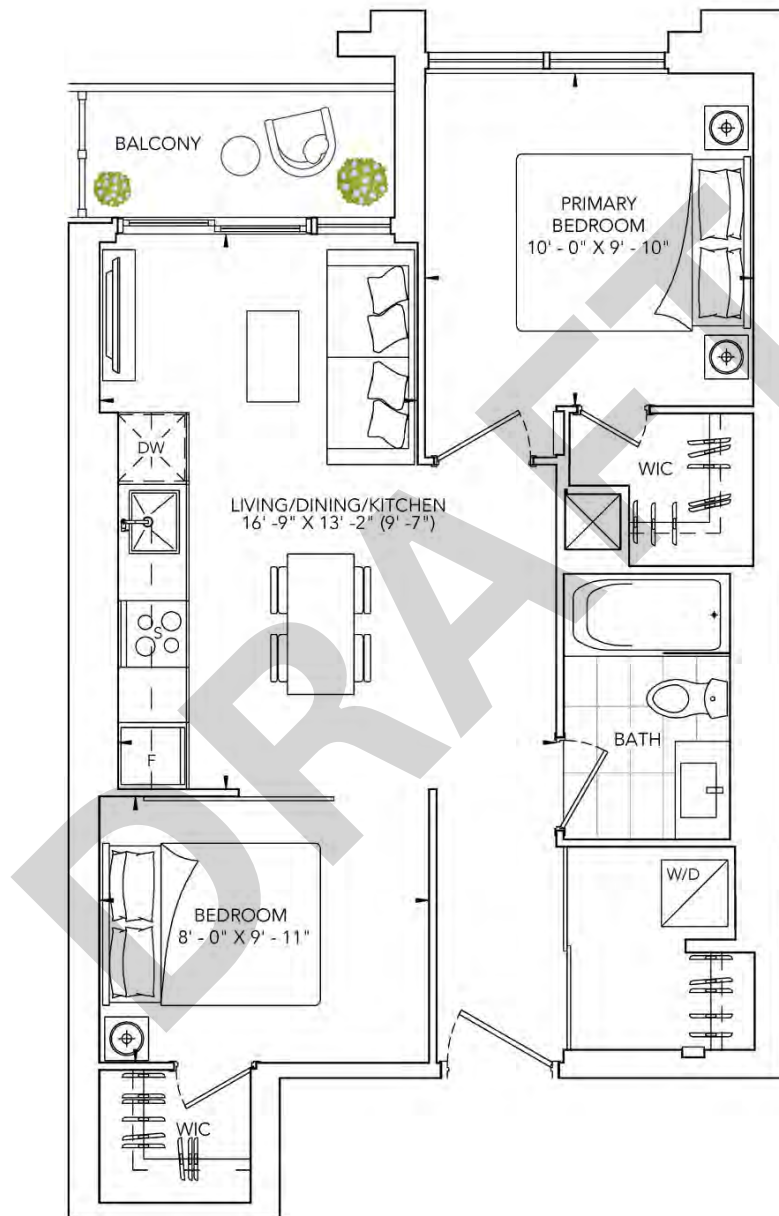
All prices, figures and materials are preliminary and are subject to change without notice E. & O. E. Note: For more information on the method used for calculating the floor area of any unit, reference should be made to Home Construction Regulatory Authority ("HCRA") Directive. May 2023

ONE BEDROOM + DEN, TWO BATH
INTERIOR: 647 SQ.FT. | EXTERIOR: 48 SQ.FT
EXPOSURE: SOUTH



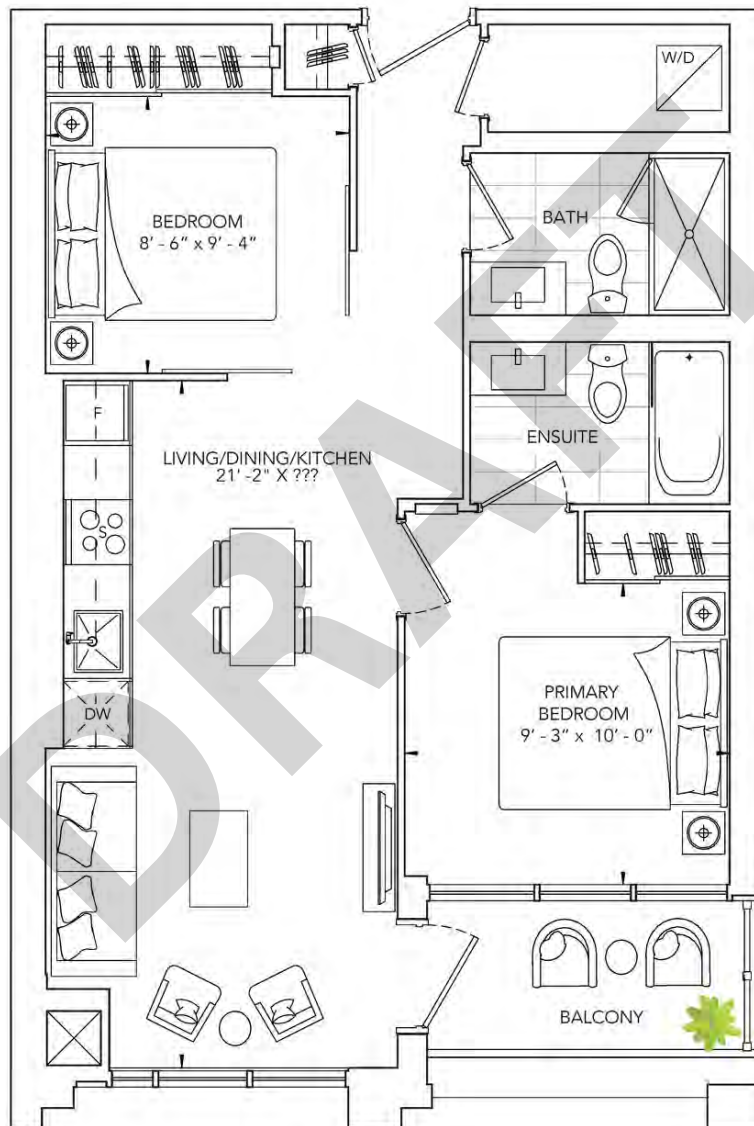
All prices, figures and materials are preliminary and are subject to change without notice E. & O. E. Note: For more information on the method used for calculating the floor area of any unit, reference should be made to Home Construction Regulatory Authority ("HCRA") Directive. May 2023

TWO BEDROOM, ONE BATH
INTERIOR: 620 SQ.FT. | EXTERIOR: 35 SQ.FT
EXPOSURE: NORTH



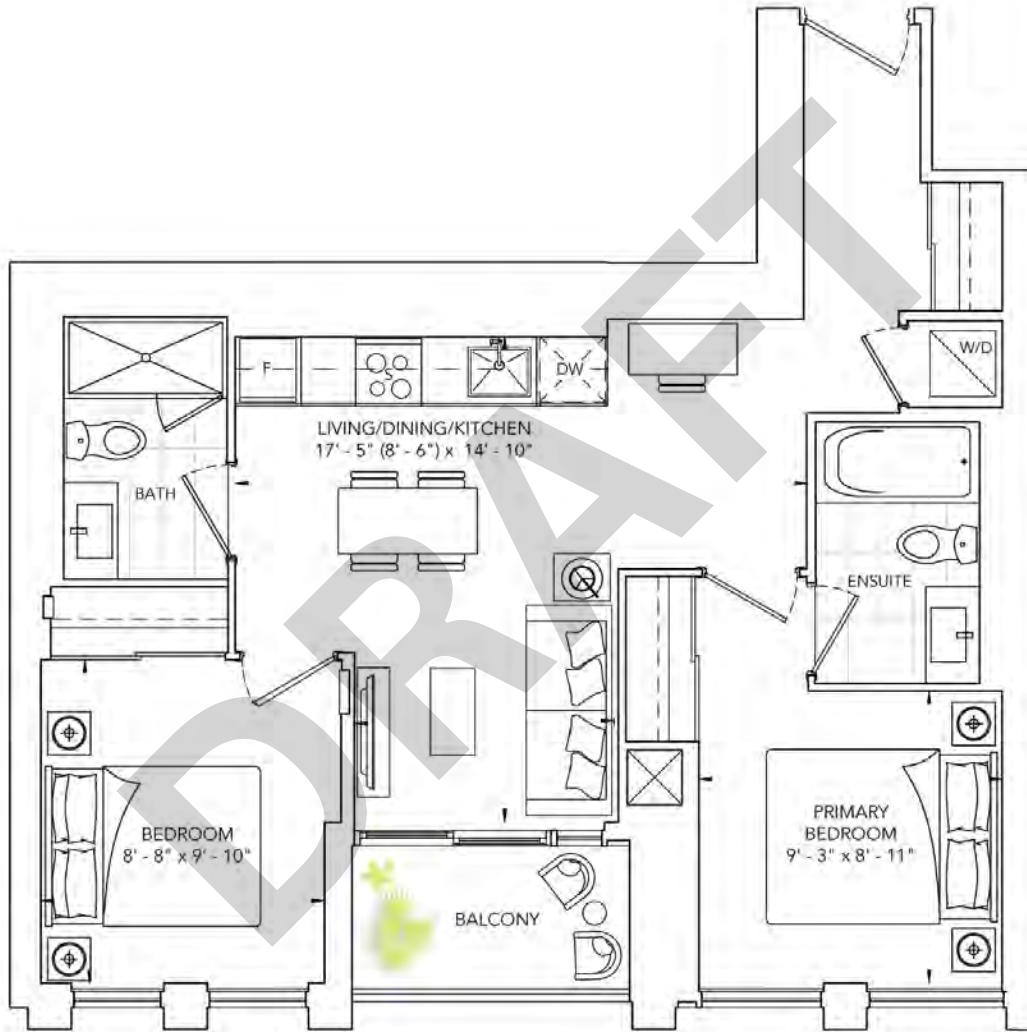
All prices, figures and materials are preliminary and are subject to change without notice E. & O. E. Note: For more information on the method used for calculating the floor area of any unit, reference should be made to Home Construction Regulatory Authority ("HCRA") Directive. May 2023

TWO BEDROOM, TWO BATH
INTERIOR: 684 SQ.FT. | EXTERIOR: 58 SQ.FT
EXPOSURE: SOUTH



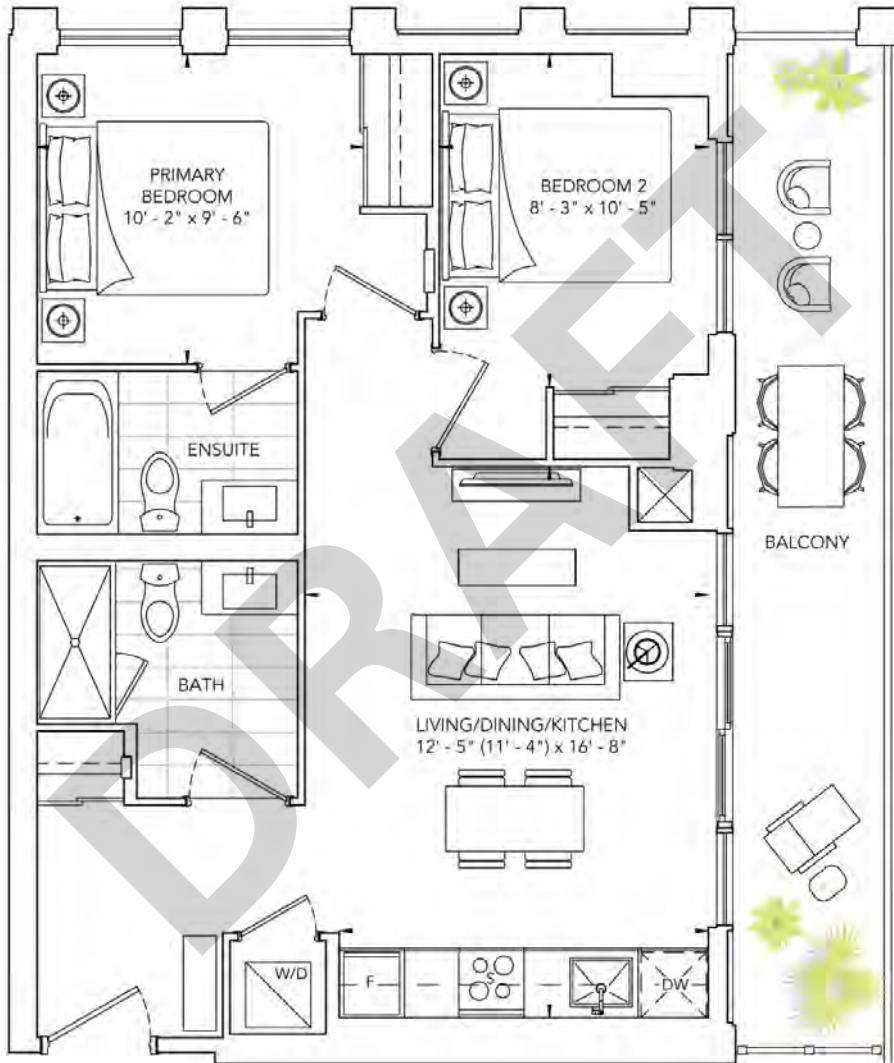
All prices, figures and materials are preliminary and are subject to change without notice E. &O. E. Note: For more information on the method used for calculating the floor area of any unit, reference should be made to Home Construction Regulatory Authority ("HCRA") Directive. May 2023

TWO BEDROOM, TWO BATH
INTERIOR: 698 SQ.FT. | EXTERIOR: 34 SQ.FT
EXPOSURE: WEST



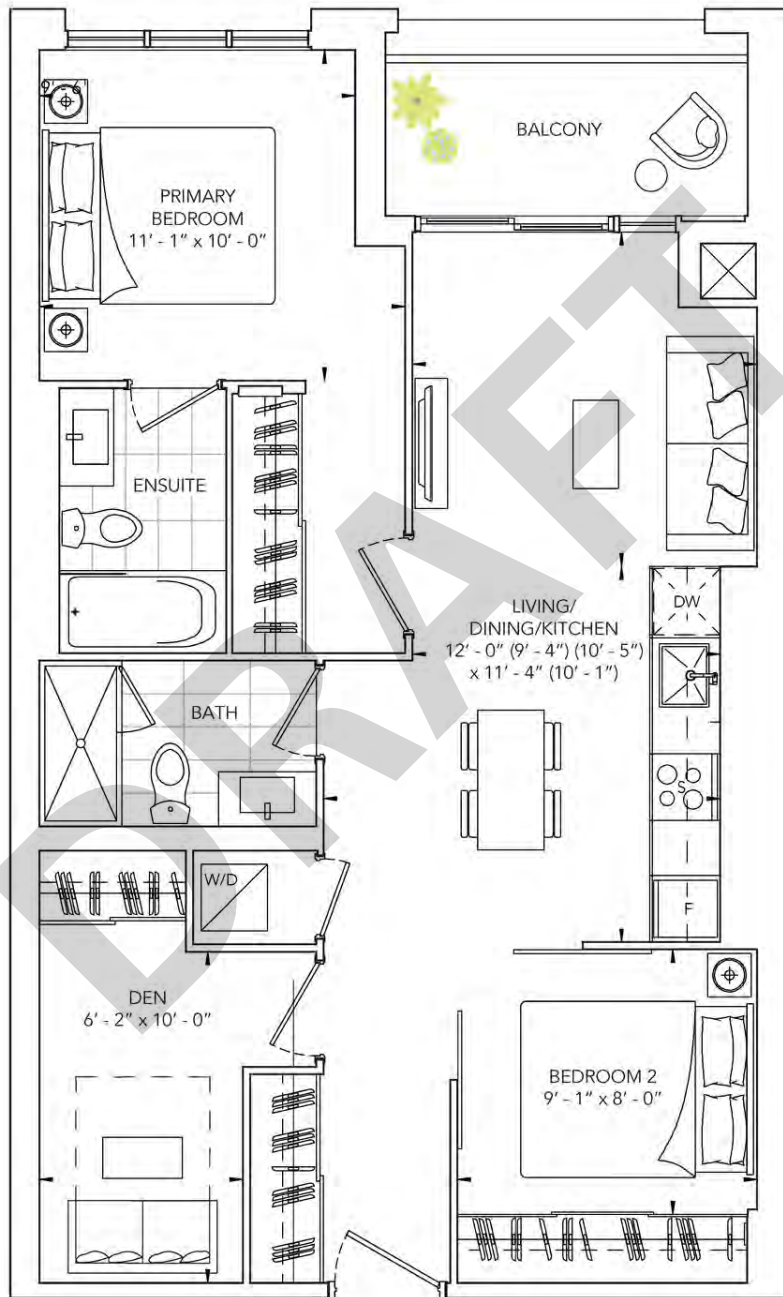
All prices, figures and materials are preliminary and are subject to change without notice E. & O. E. Note: For more information on the method used for calculating the floor area of any unit, reference should be made to Home Construction Regulatory Authority ("HCRA") Directive. May 2023

TWO BEDROOM, TWO BATH
INTERIOR: 697 SQ.FT. | EXTERIOR: 126 SQ.FT
EXPOSURE: SOUTH EAST



All prices, figures and materials are preliminary and are subject to change without notice E. & O. E. Note: For more information on the method used for calculating the floor area of any unit, reference should be made to Home Construction Regulatory Authority ("HCRA") Directive. May 2023

TWO BEDROOM + DEN, TWO BATH
INTERIOR: 817 SQ.FT. | EXTERIOR: 63 SQ.FT
EXPOSURE: NORTH



All prices, figures and materials are preliminary and are subject to change without notice E. & O. E. Note: For more information on the method used for calculating the floor area of any unit, reference should be made to Home Construction Regulatory Authority ("HCRA") Directive. May 2023