

42' SINGLES



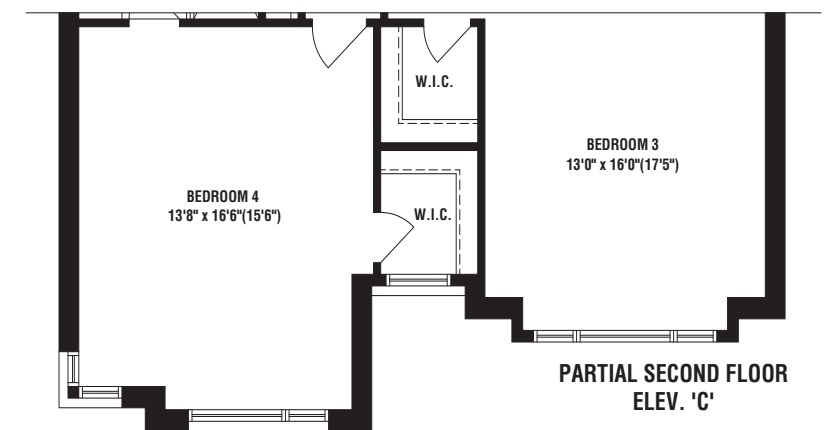
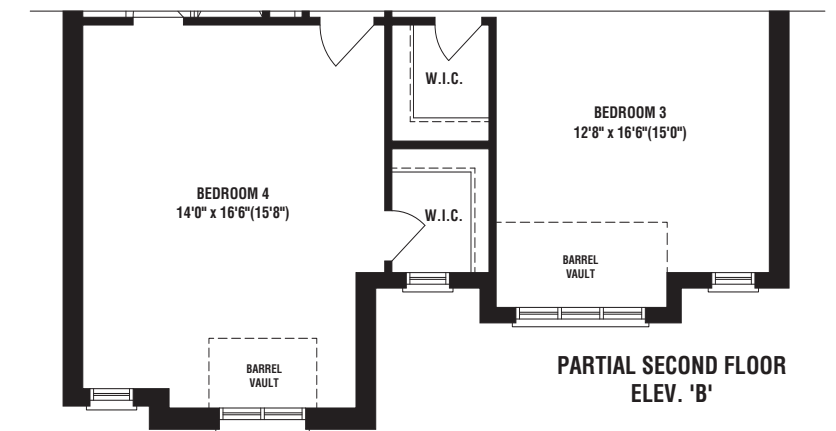
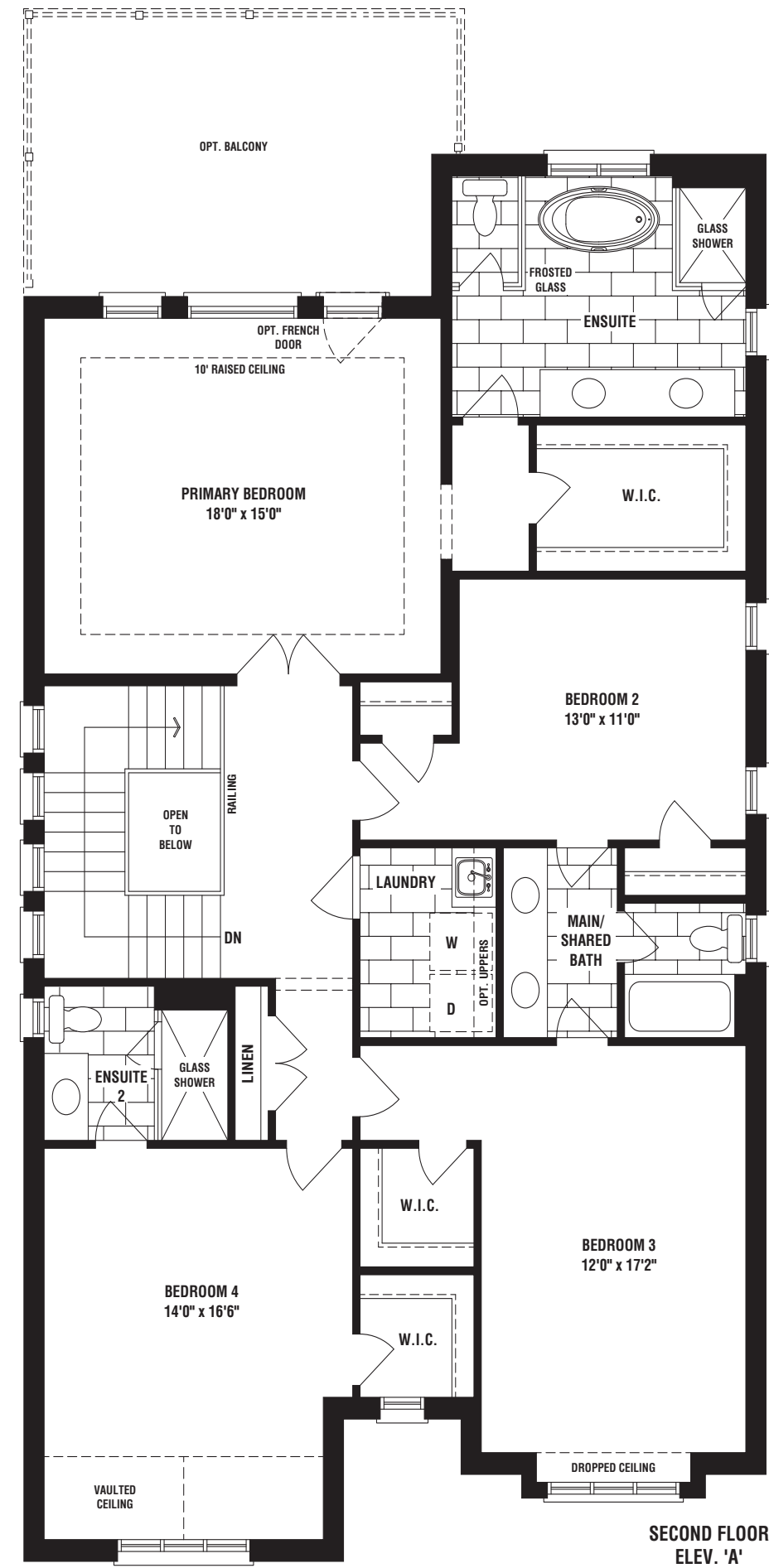
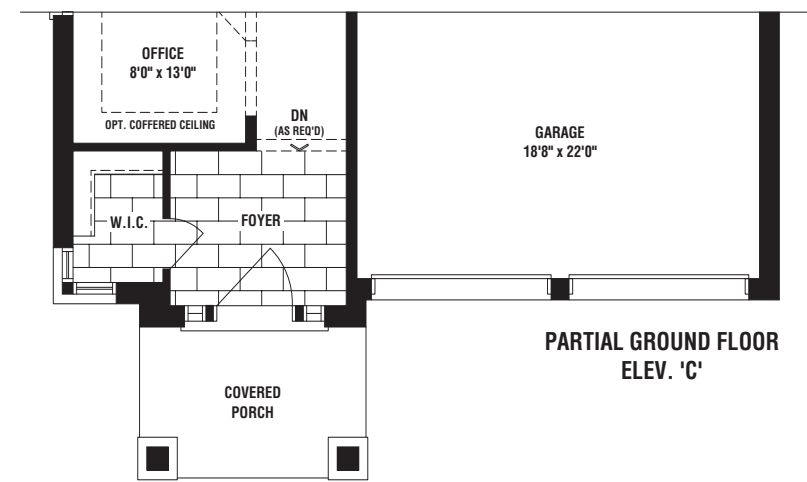
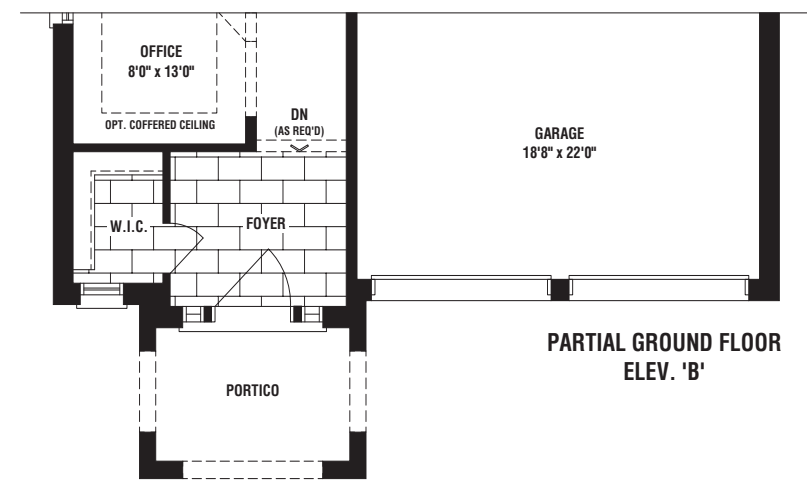
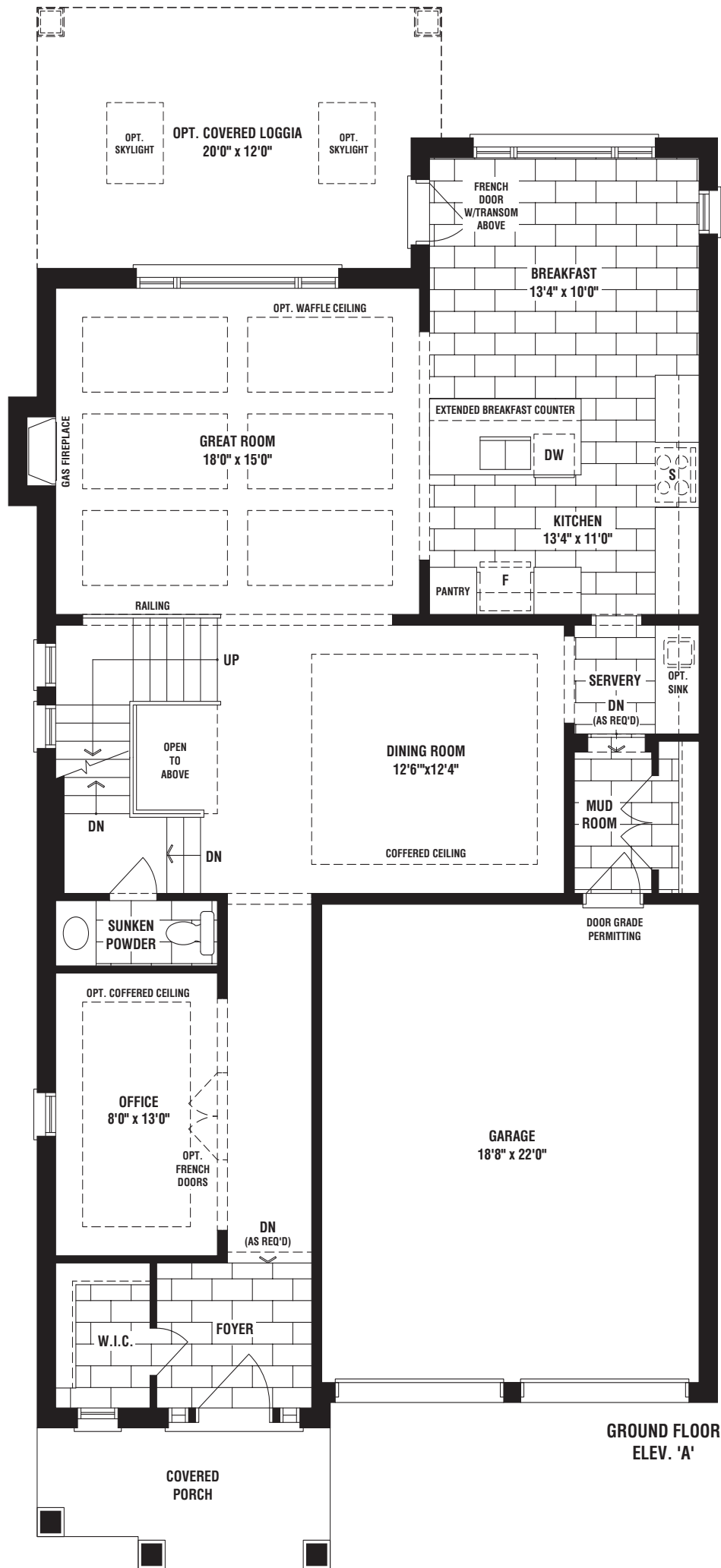
Pena

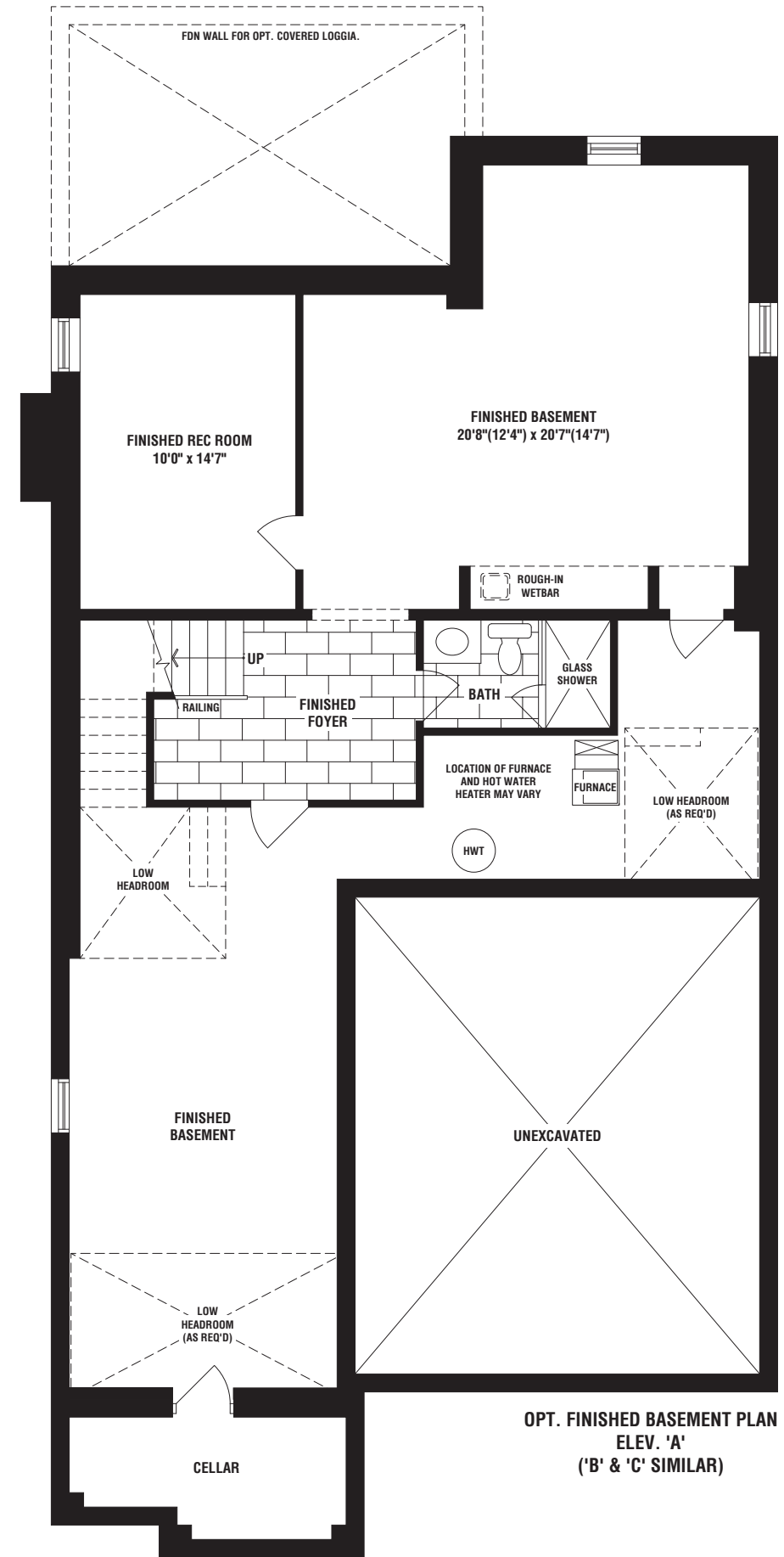
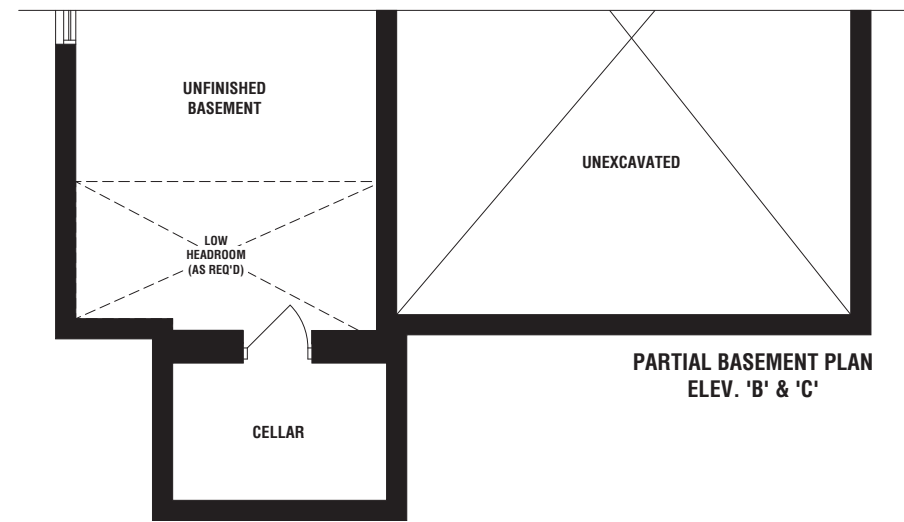
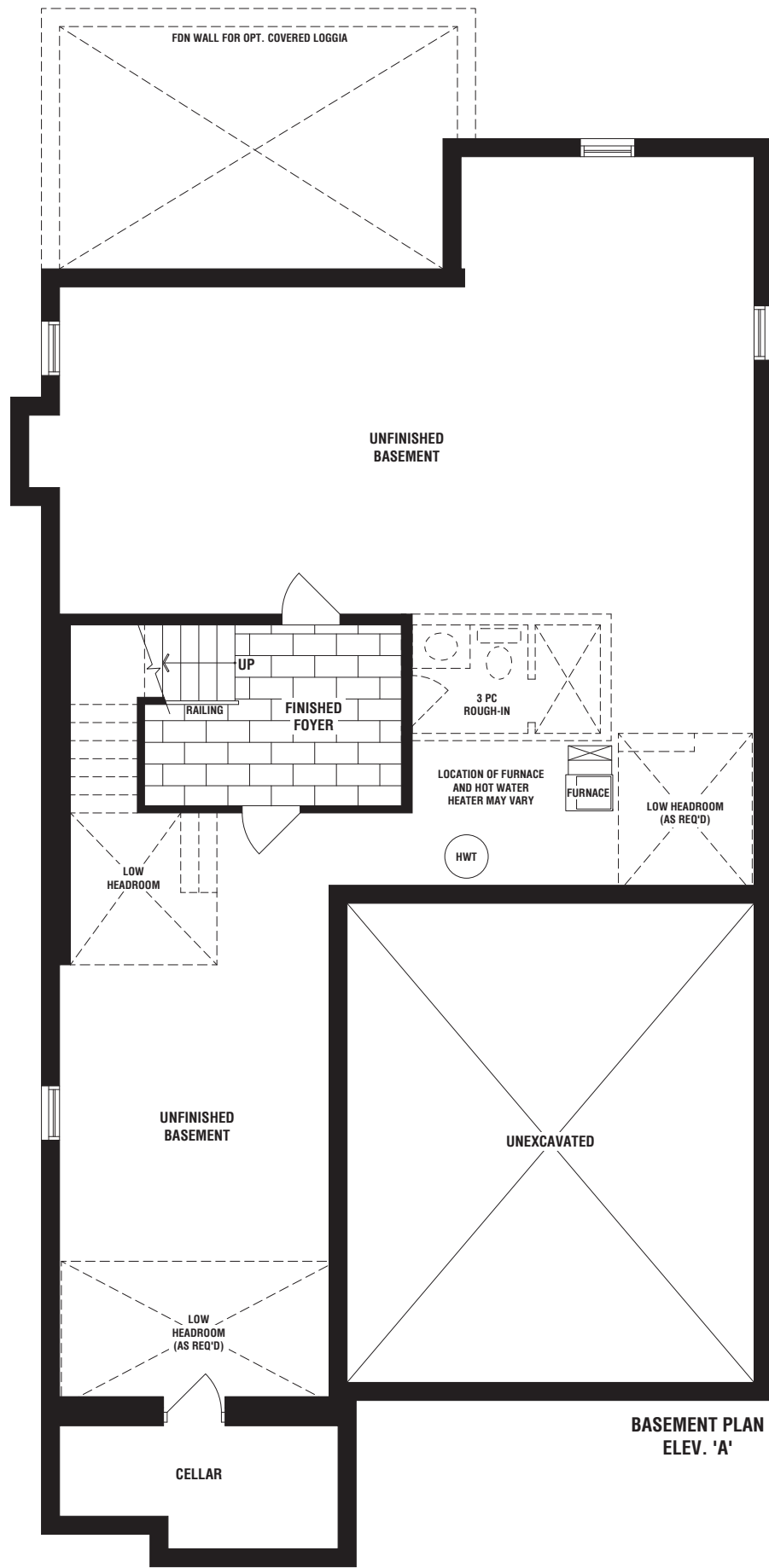
4 BEDROOMS & 3.5 BATHROOMS

ELEV. A: 3311 SQ FT | ELEV. B: 3268 SQ FT | ELEV. C: 3291 SQ FT

SQ FT INCLUDES 97 SQ FT FOR FINISHED BASEMENT FOYER (ADDITIONAL 795 SQ FT FOR OPTIONAL FINISHED BASEMENT)







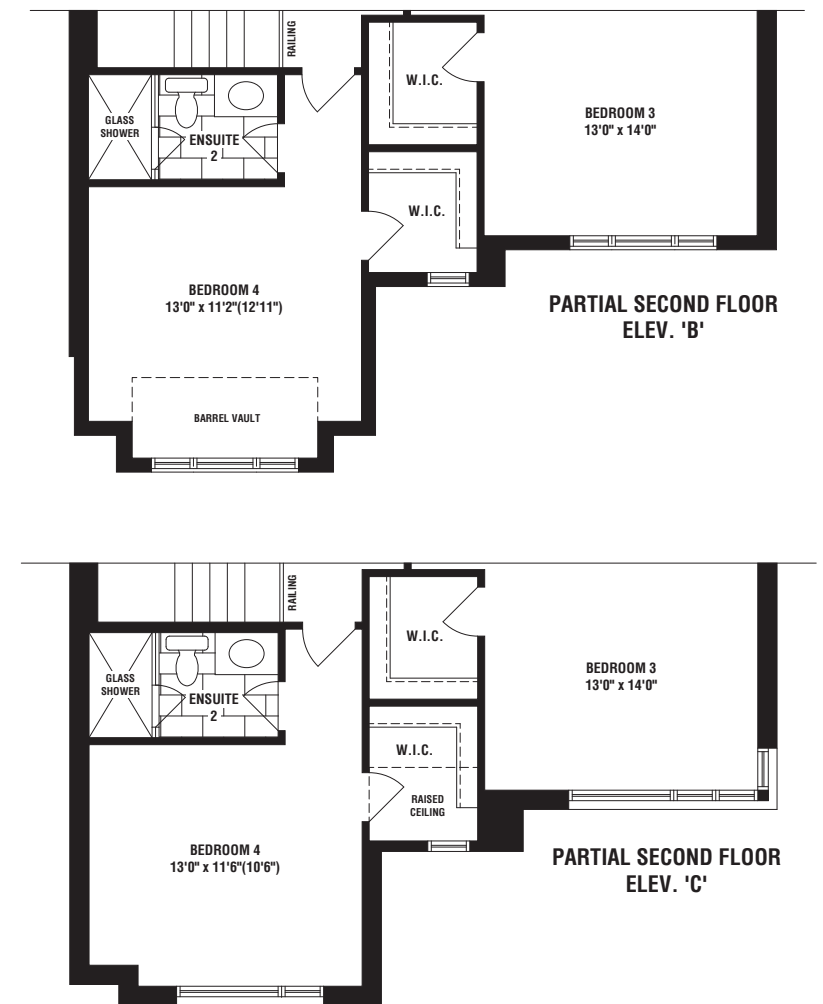
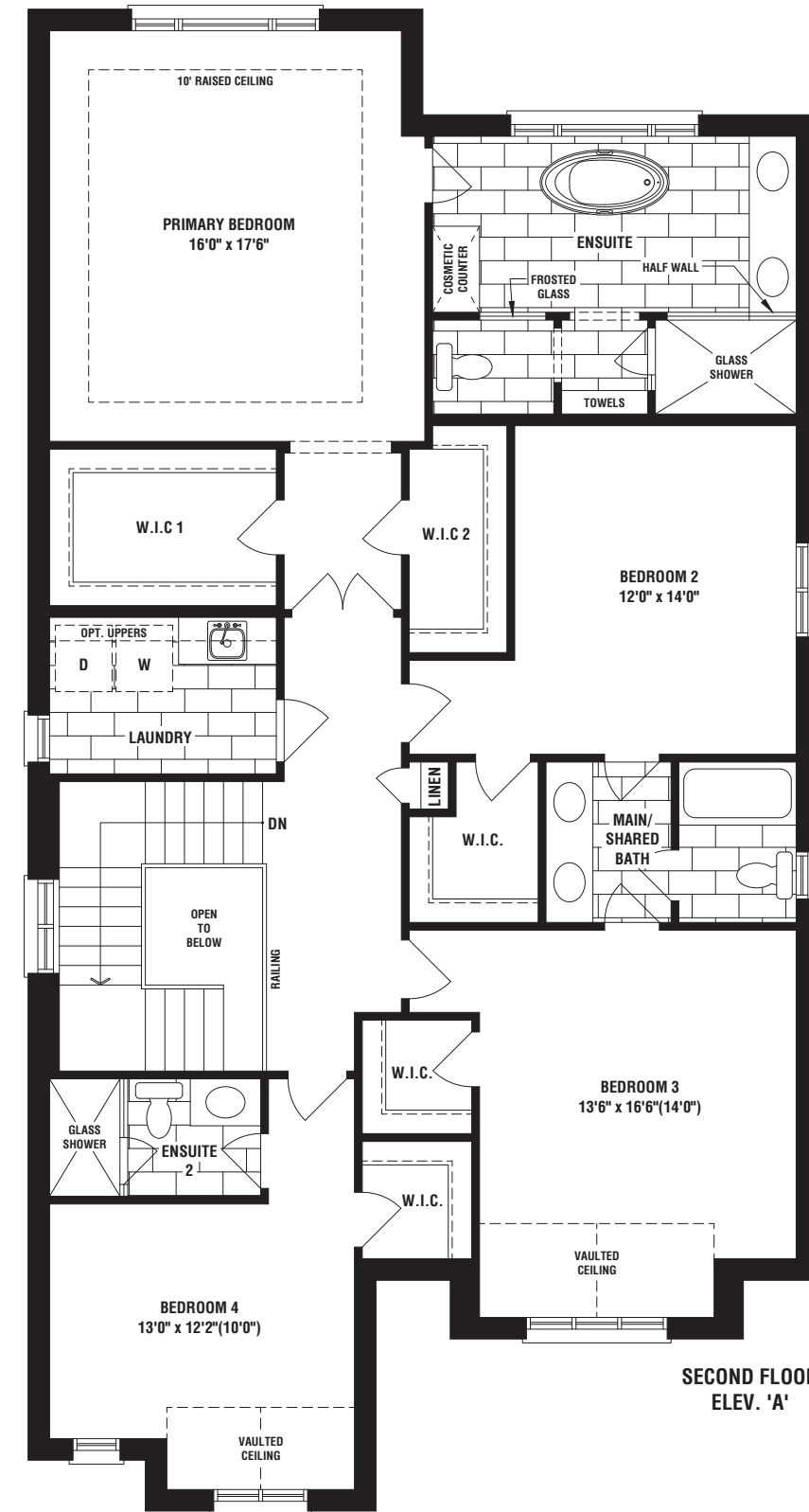
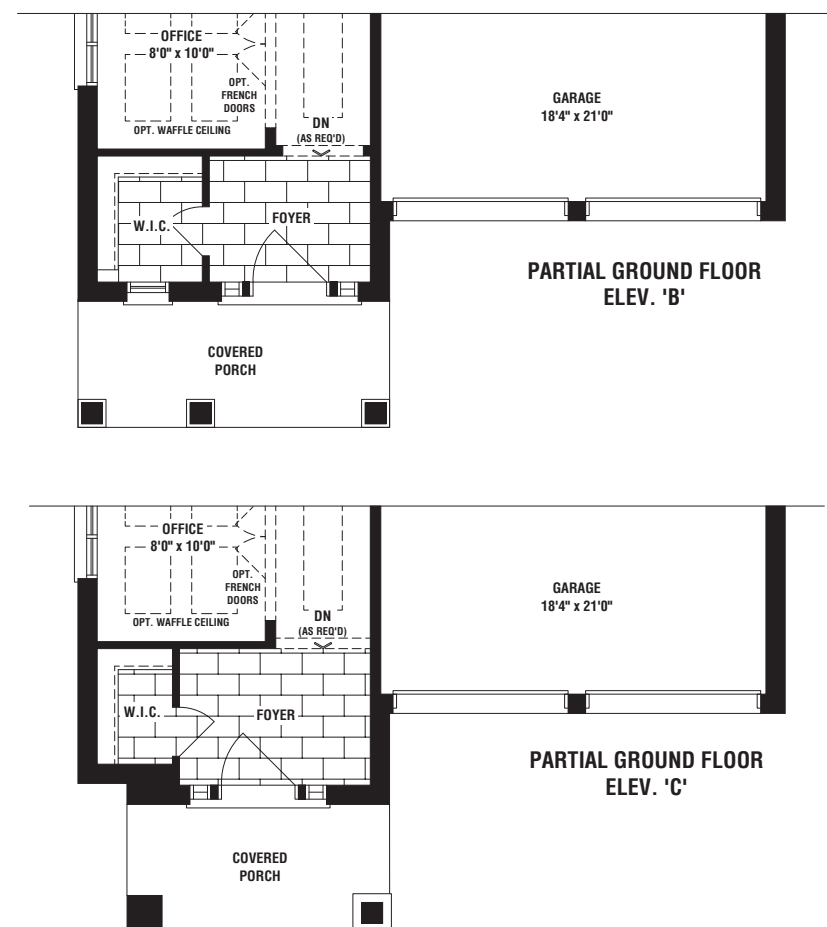
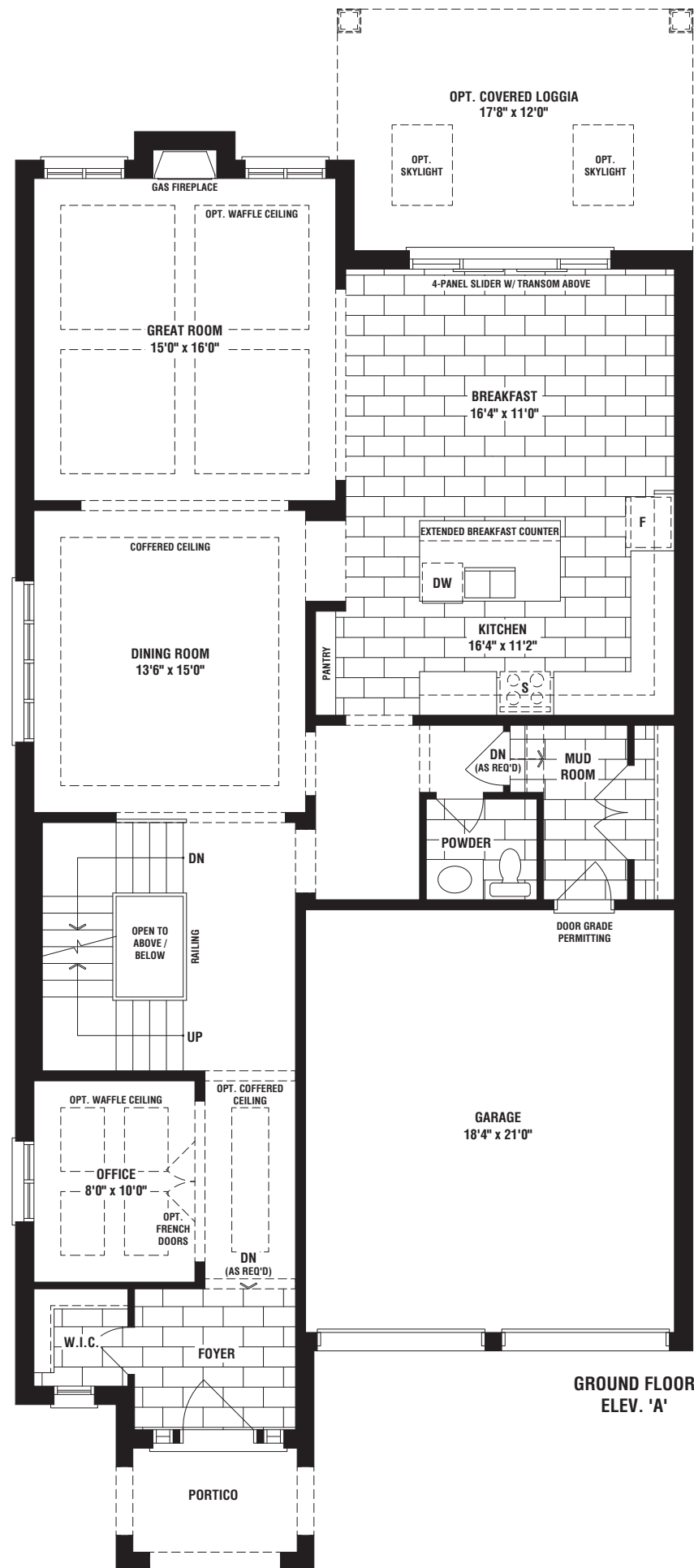
Donan

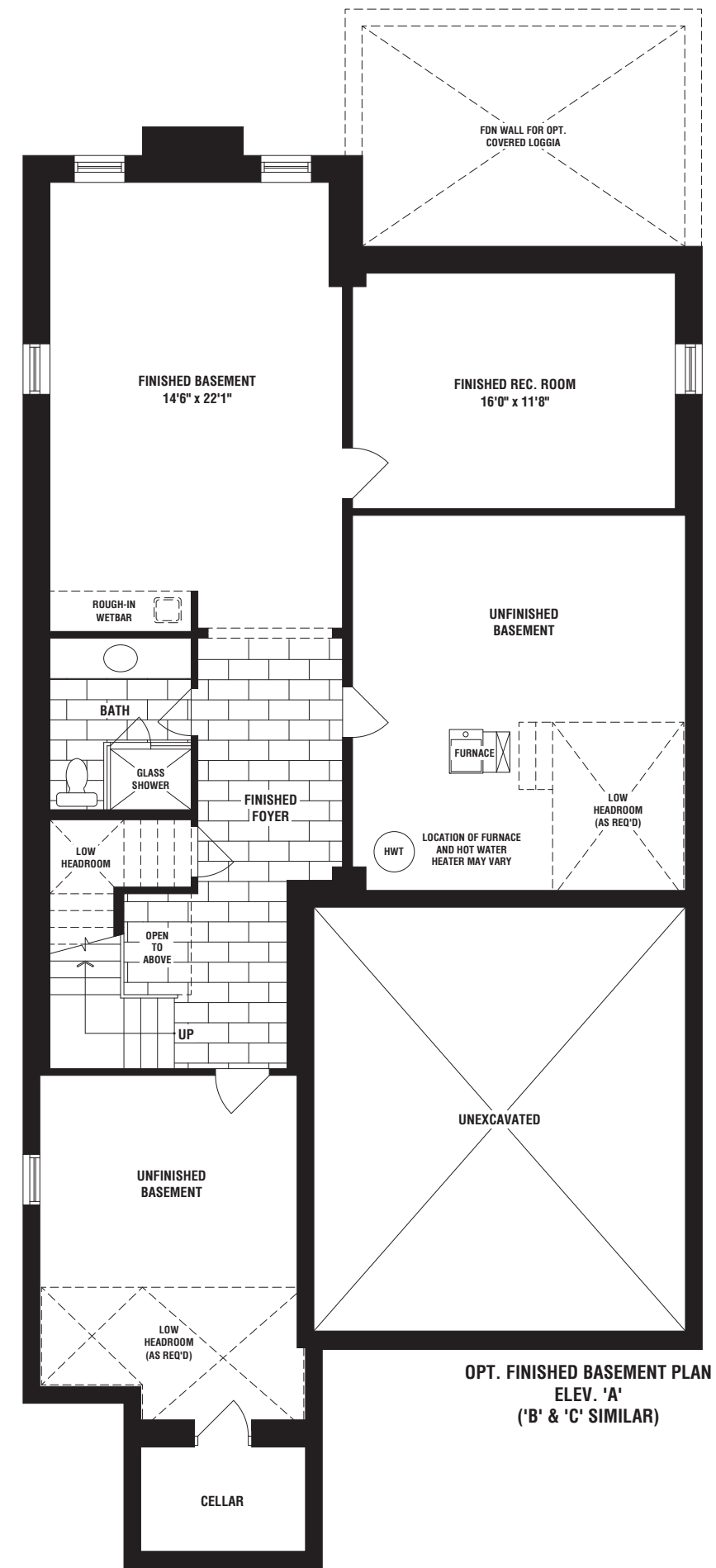
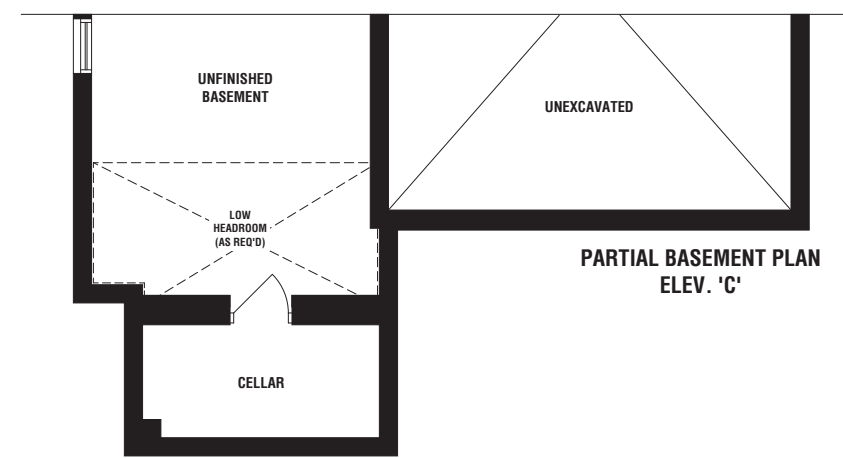
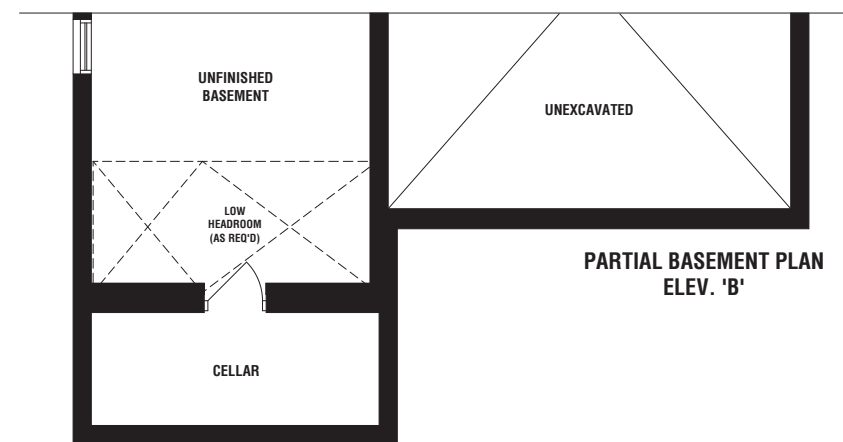
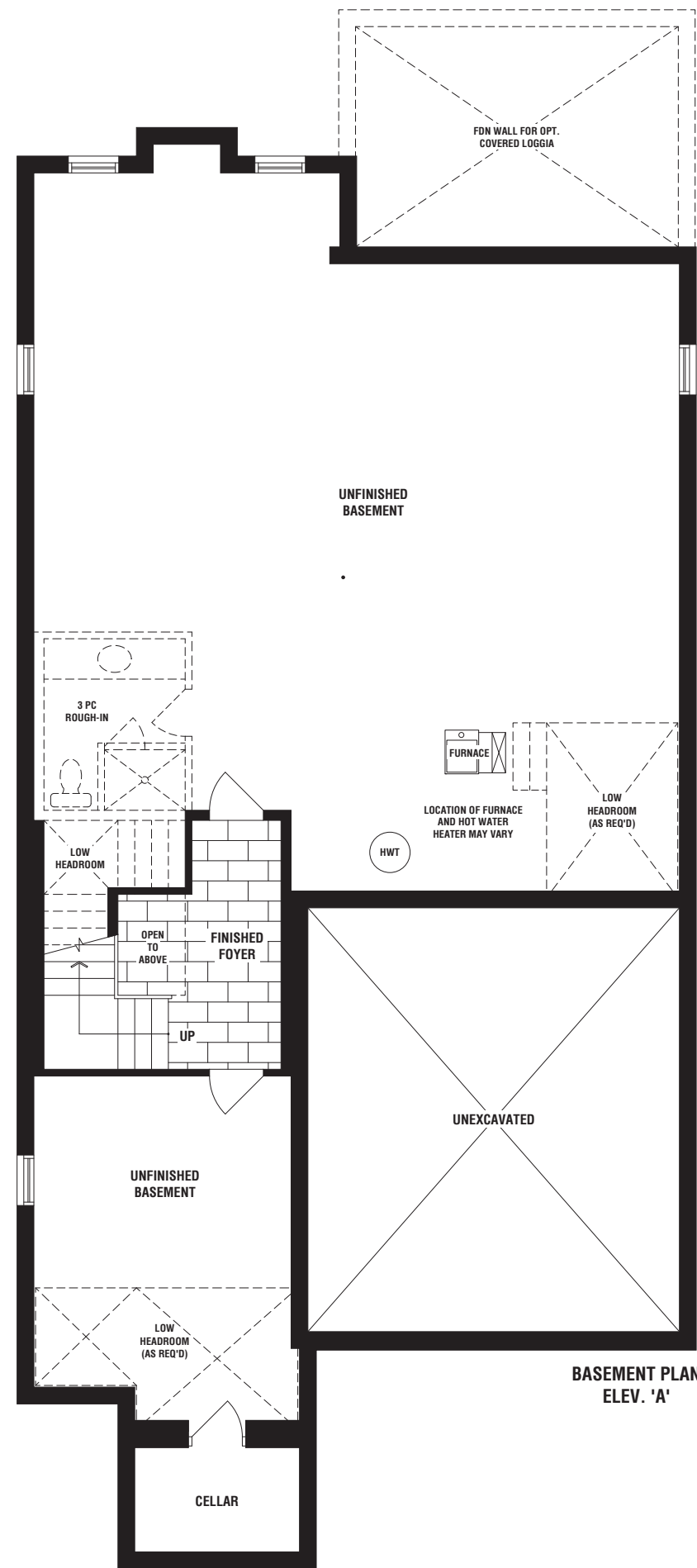
4 BEDROOMS & 3.5 BATHROOMS

ELEV. A: 3528 SQ FT | ELEV. B: 3512 SQ FT | ELEV. C: 3512 SQ FT

SQ FT INCLUDES 99 SQ FT FOR FINISHED BASEMENT FOYER (ADDITIONAL 887 SQ FT FOR OPTIONAL FINISHED BASEMENT)







Warwick Corner

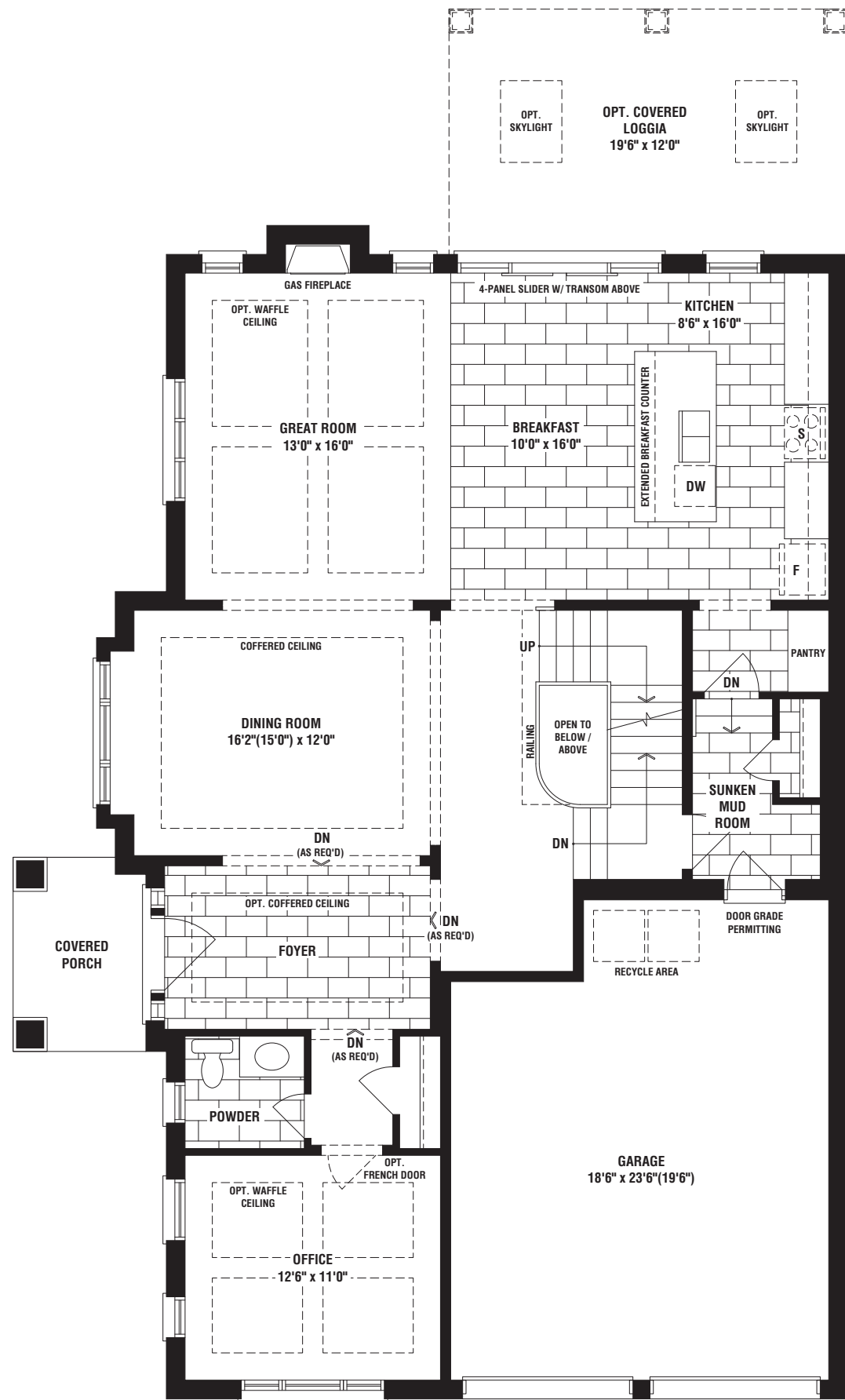
4 BEDROOMS & 3.5 BATHROOMS

ELEV. A: 3313 SQ FT | ELEV. B: 3543 SQ FT | ELEV. C: 3495 SQ FT

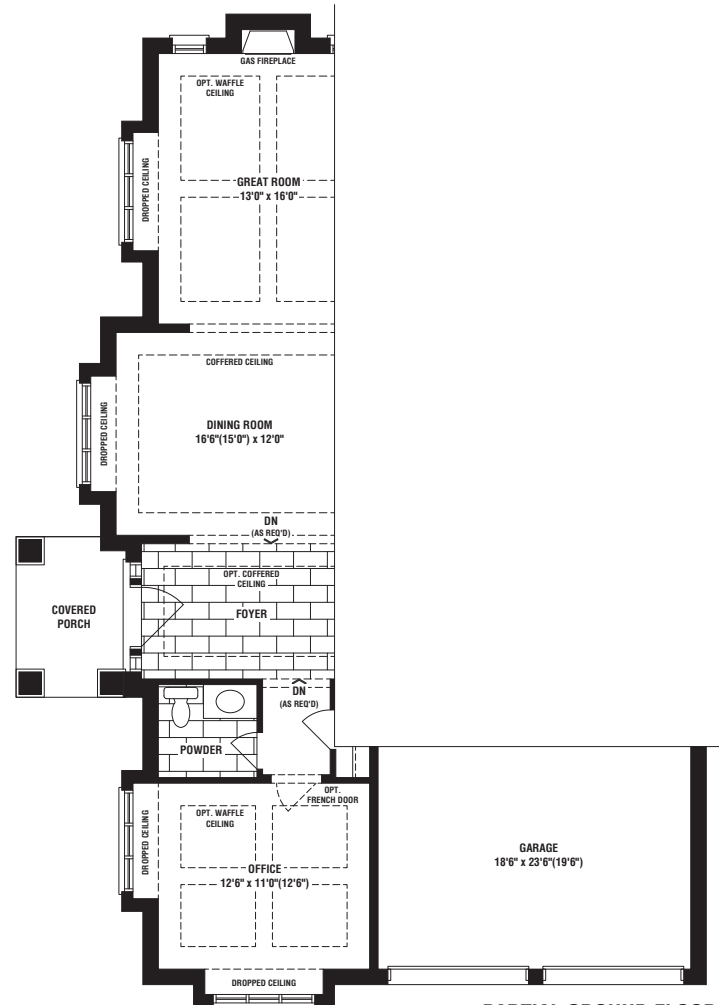
SQ FT INCLUDES 79 SQ FT FOR FINISHED BASEMENT FOYER

(ADDITIONAL 728 SQ FT (ELEV. A & C) FOR OPTIONAL FINISHED BASEMENT | 741 SQ FT (ELEV. B) FOR OPTIONAL FINISHED BASEMENT)

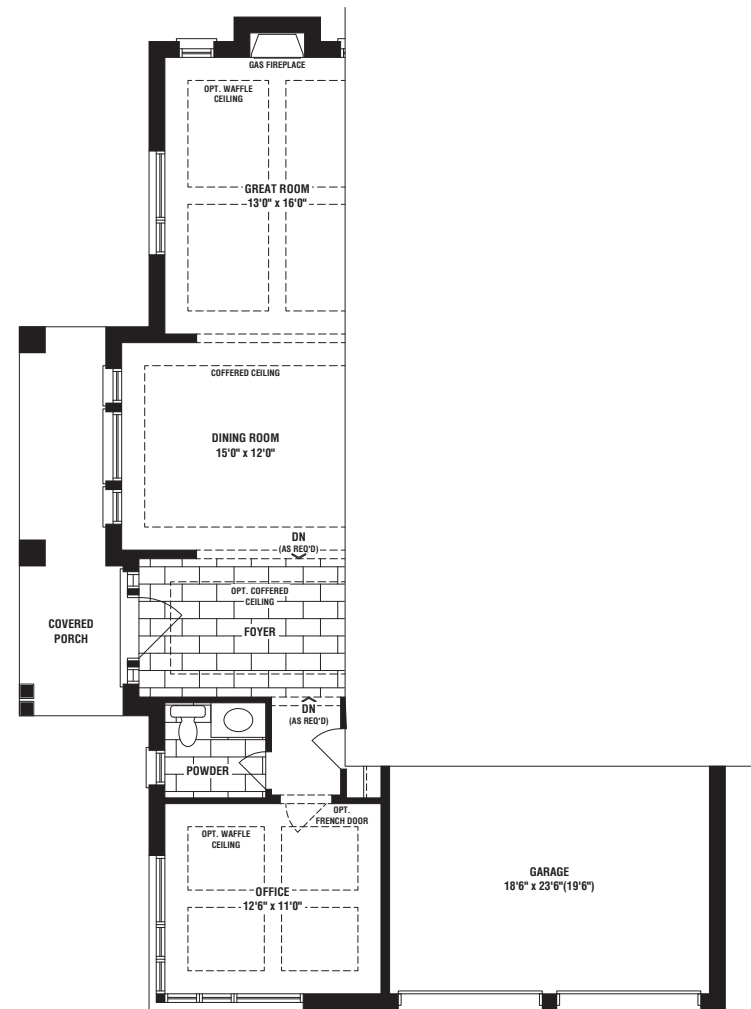




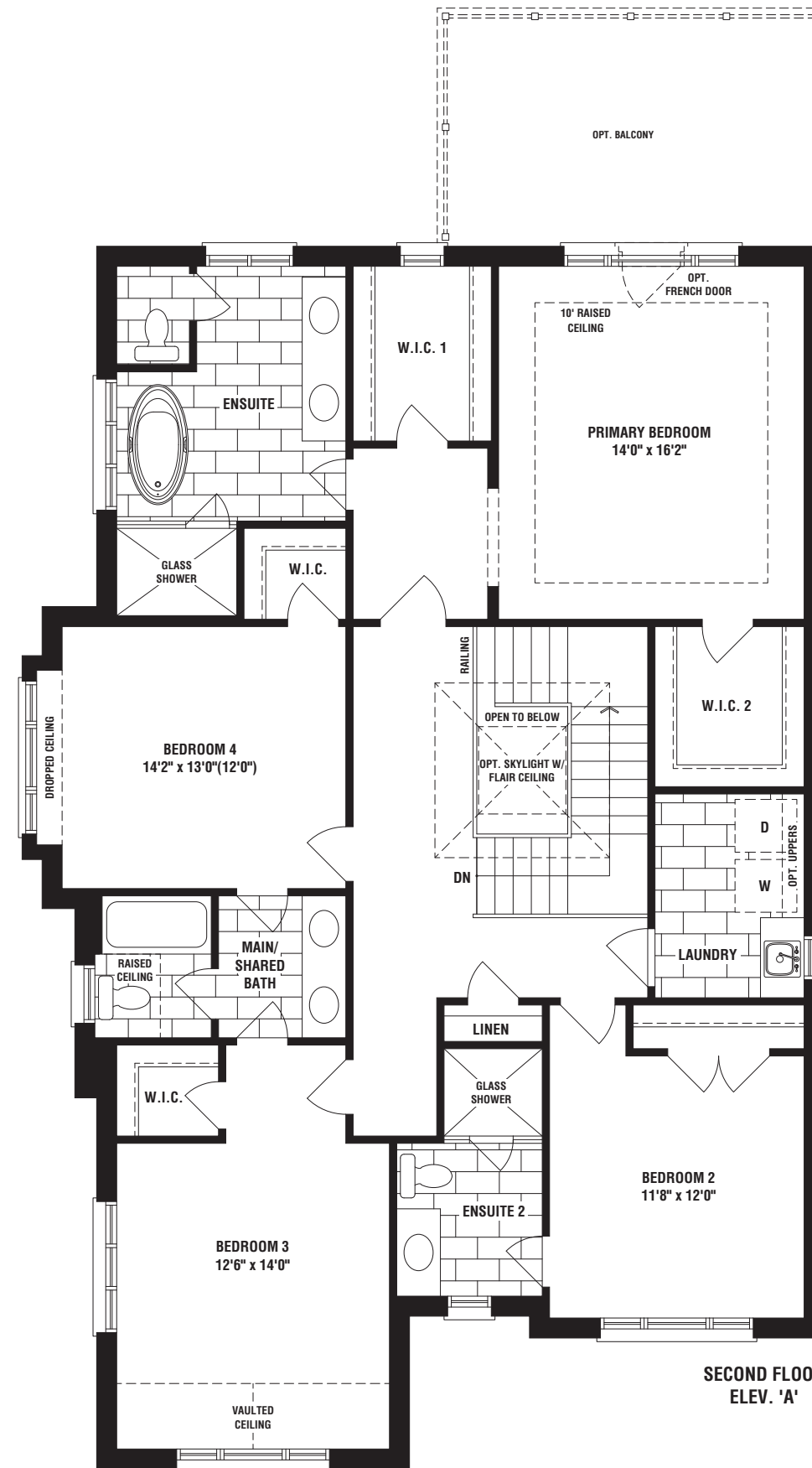
GROUND FLOOR ELEV. 'A'



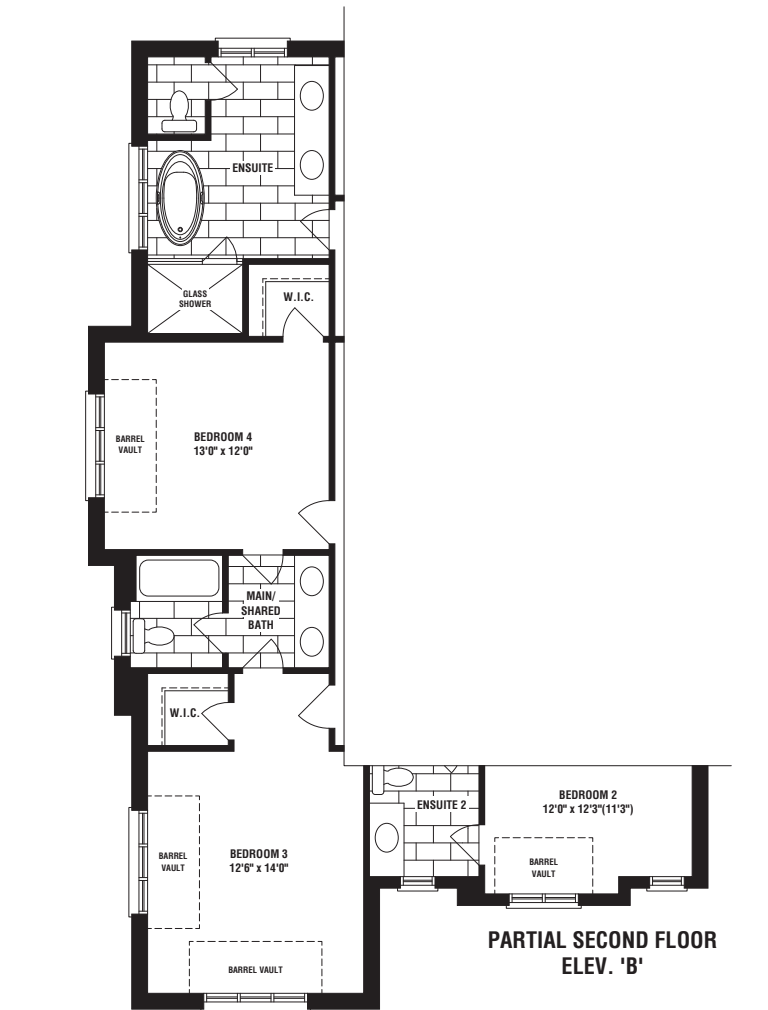
PARTIAL GROUND FLOOR ELEV. 'B'



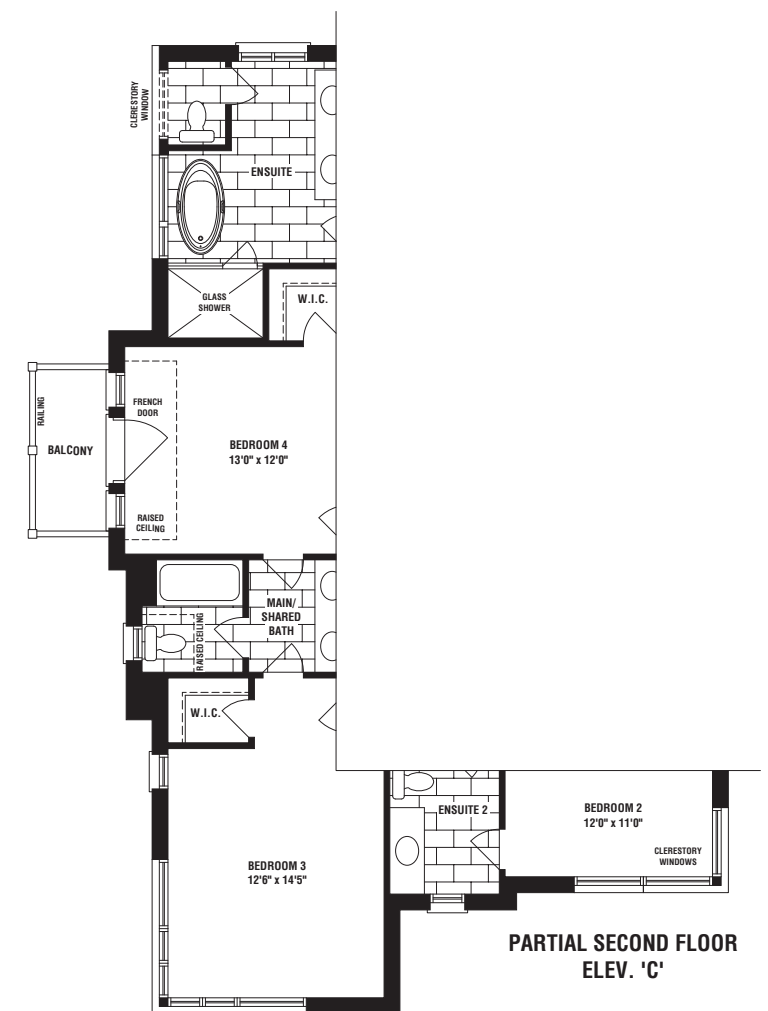
PARTIAL GROUND FLOOR ELEV. 'C'



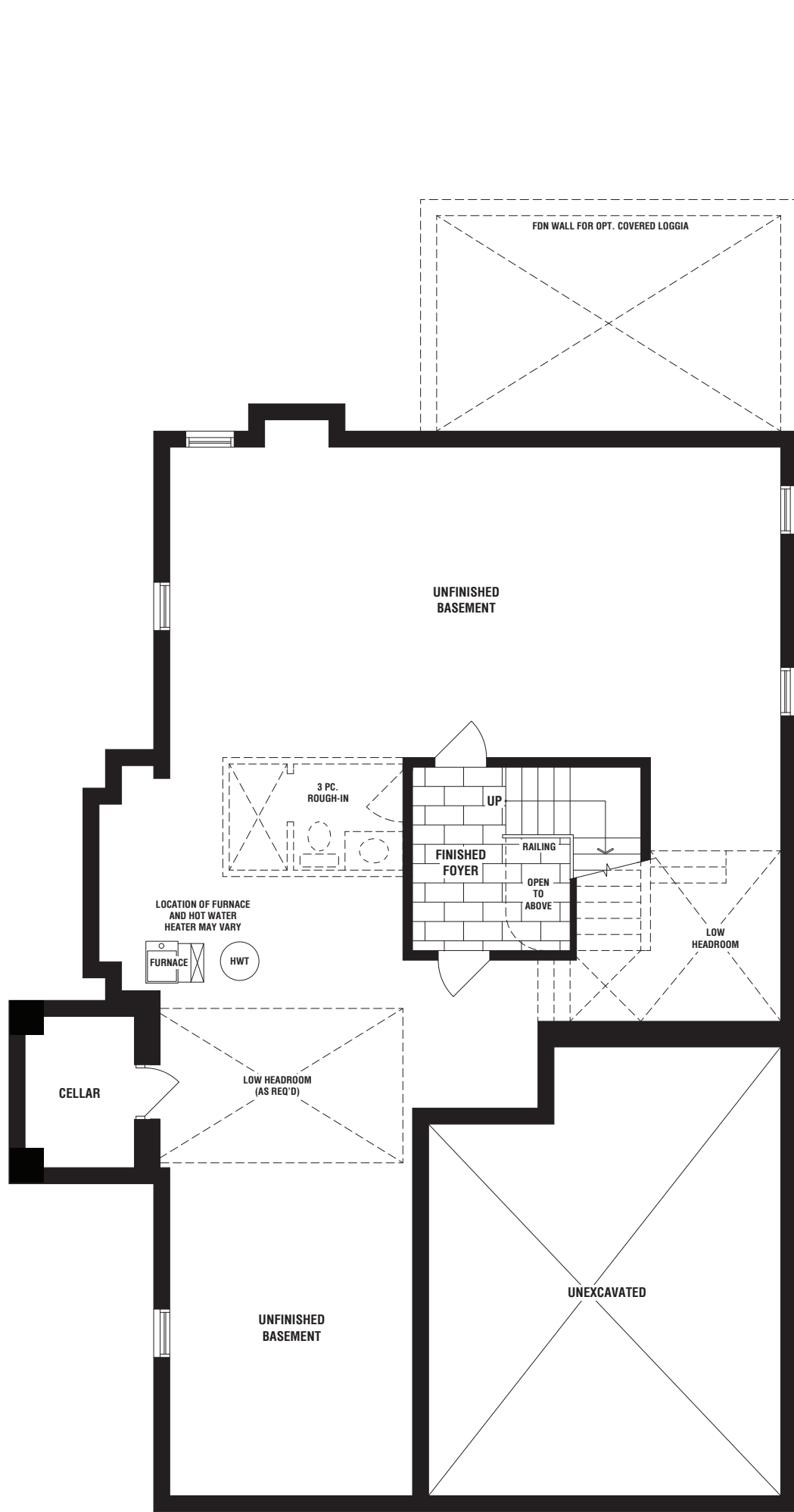
SECOND FLOOR ELEV. 'A'



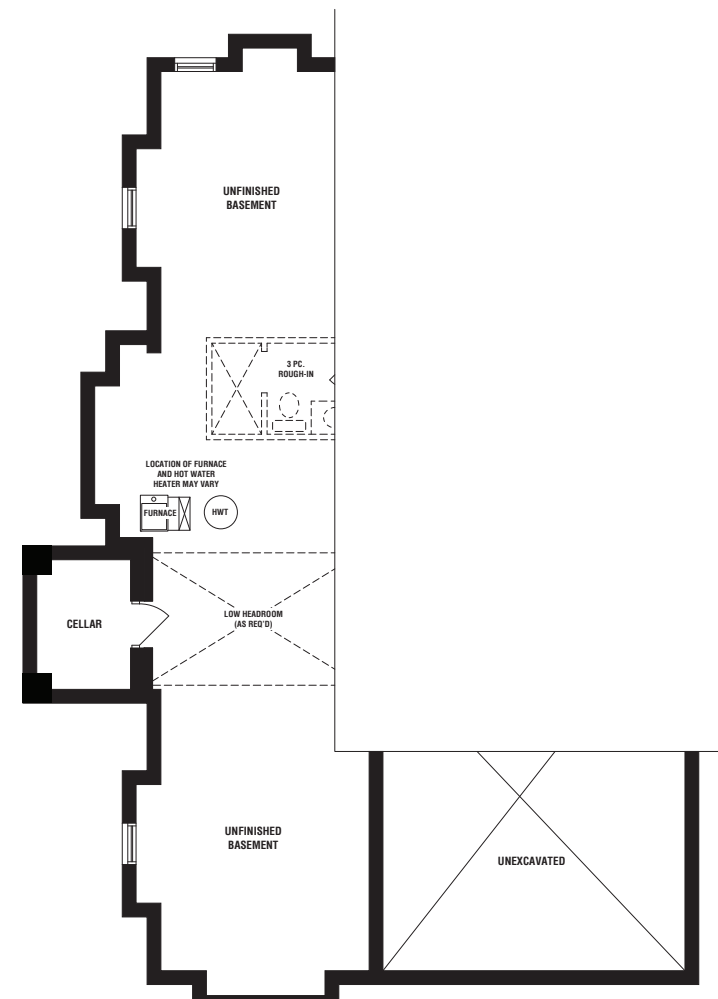
PARTIAL SECOND FLOOR ELEV. 'B'



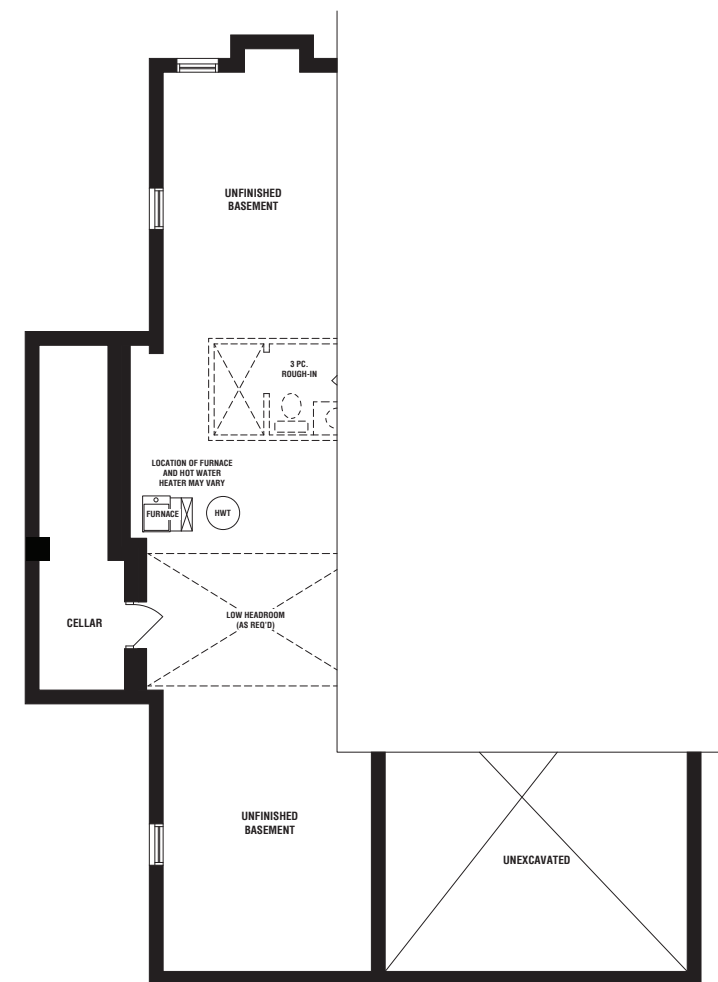
PARTIAL SECOND FLOOR ELEV. 'C'



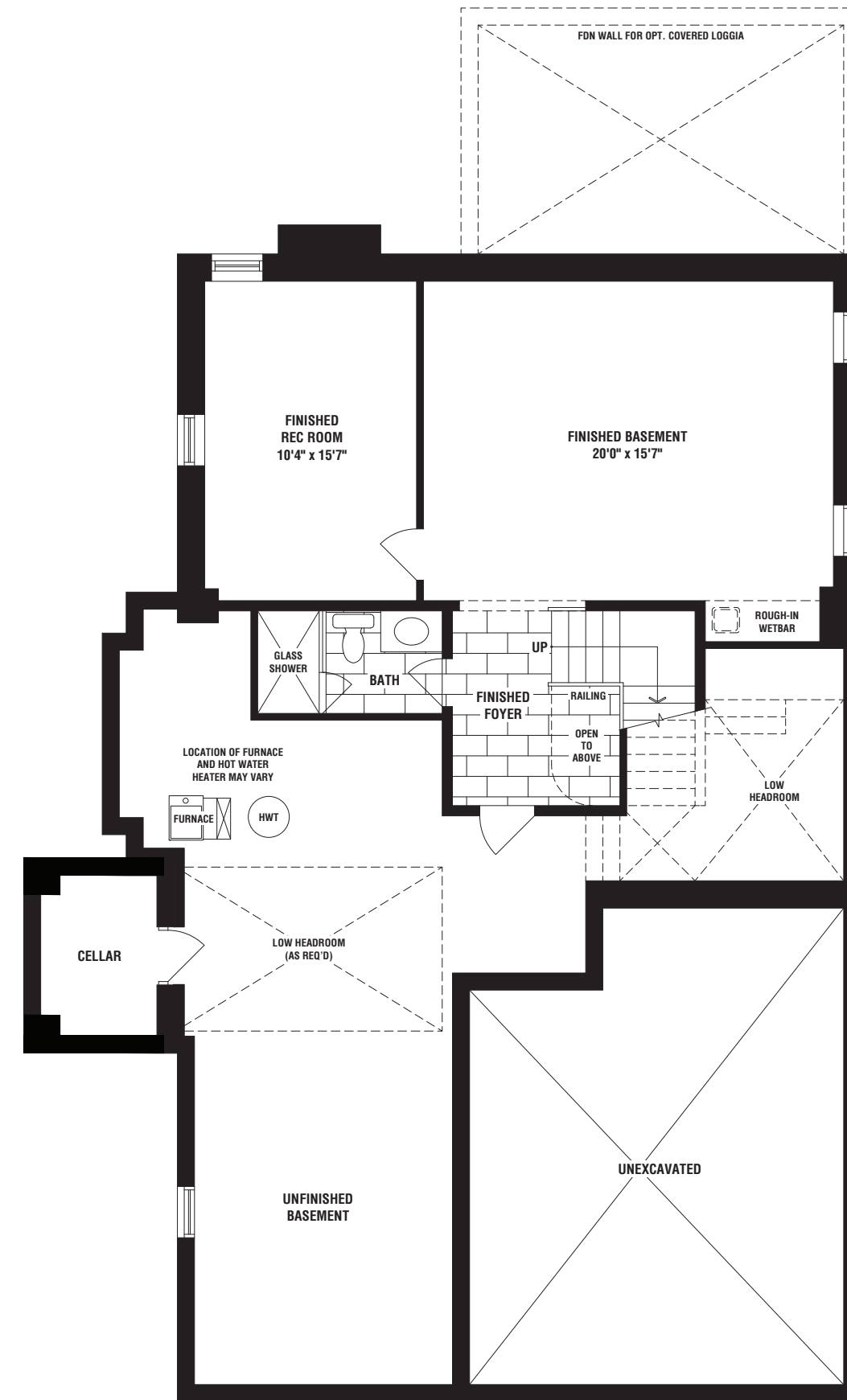
BASEMENT PLAN
ELEV. 'A'



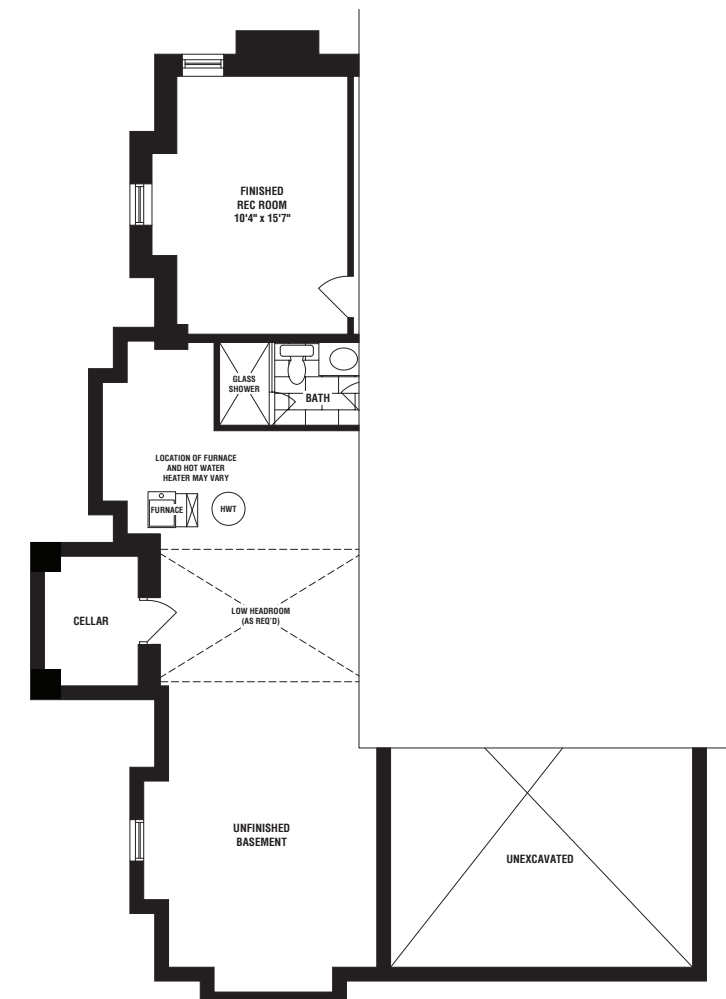
PARTIAL BASEMENT PLAN
ELEV. 'B'



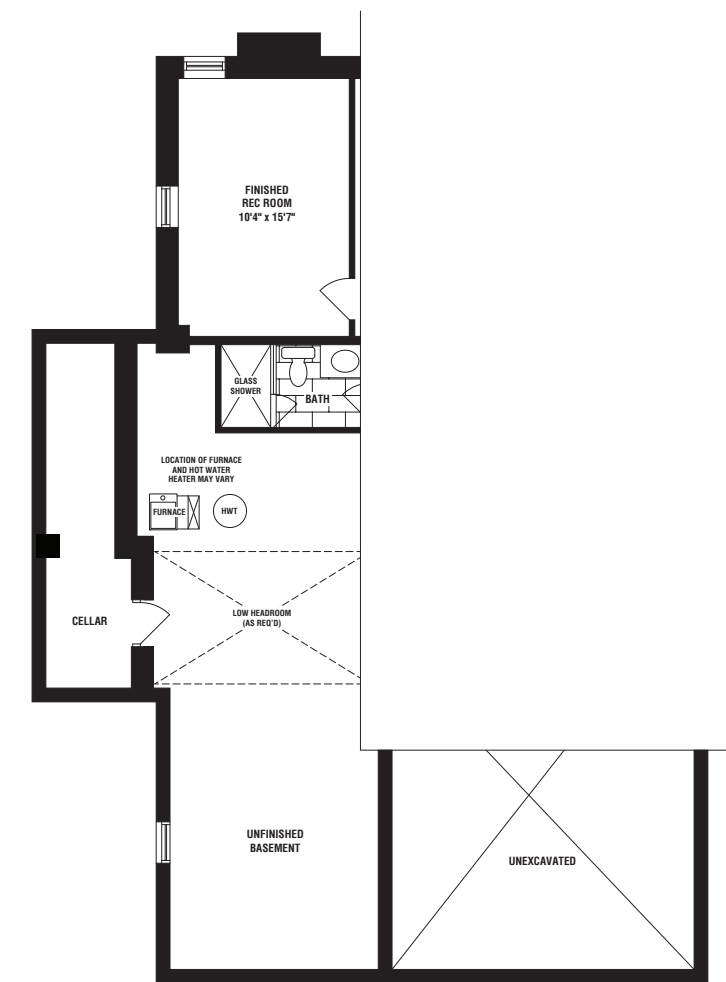
PARTIAL BASEMENT PLAN
ELEV. 'C'



OPT. FINISHED BASEMENT PLAN
ELEV. 'A'



PARTIAL OPT. FINISHED BASEMENT PLAN
ELEV. 'B'



PARTIAL OPT. FINISHED BASEMENT PLAN
ELEV. 'C'