

TREASURE HILL PRESENTS



Hazel Glenn



WESTPORT SERIES TOWNS IN CAMBRIDGE

Come Home To Cambridge



Cambridge is located on the Grand River, one of the best maintained waterways in the province. The natural areas surrounding it feature gorgeous green spaces and kilometres of winding trails.

You will find the city of Cambridge has an abundance of historical charm. The Galt District located in the downtown core offers a unique heritage neighbourhood with a small-town feel, and all the conveniences of city life. World-class healthcare, big box retailers, boutique shopping, plus numerous restaurants to choose from, all at your doorstep.





A city full of opportunity

1

- Best Buy
- Staples
- The Keg
- LA Fitness
- Wal-Mart
- Canadian Tire
- Home Depot
- Winners
- Lone Star Bar & Grill

2

- Cambridge Shopping Centre

3

- Downtown Cambridge

4

- Albert's Doughnuts
- Tony's Family Diner
- Chuck's Roadhouse Bar & Grill
- Boston Pizza
- Popeye's
- McDonald's
- LCBO
- Shoppers Drug Mart
- Burger King
- Tim Horton's
- Anytime Fitness
- Swiss Chalet
- Home Hardware
- FreshCo

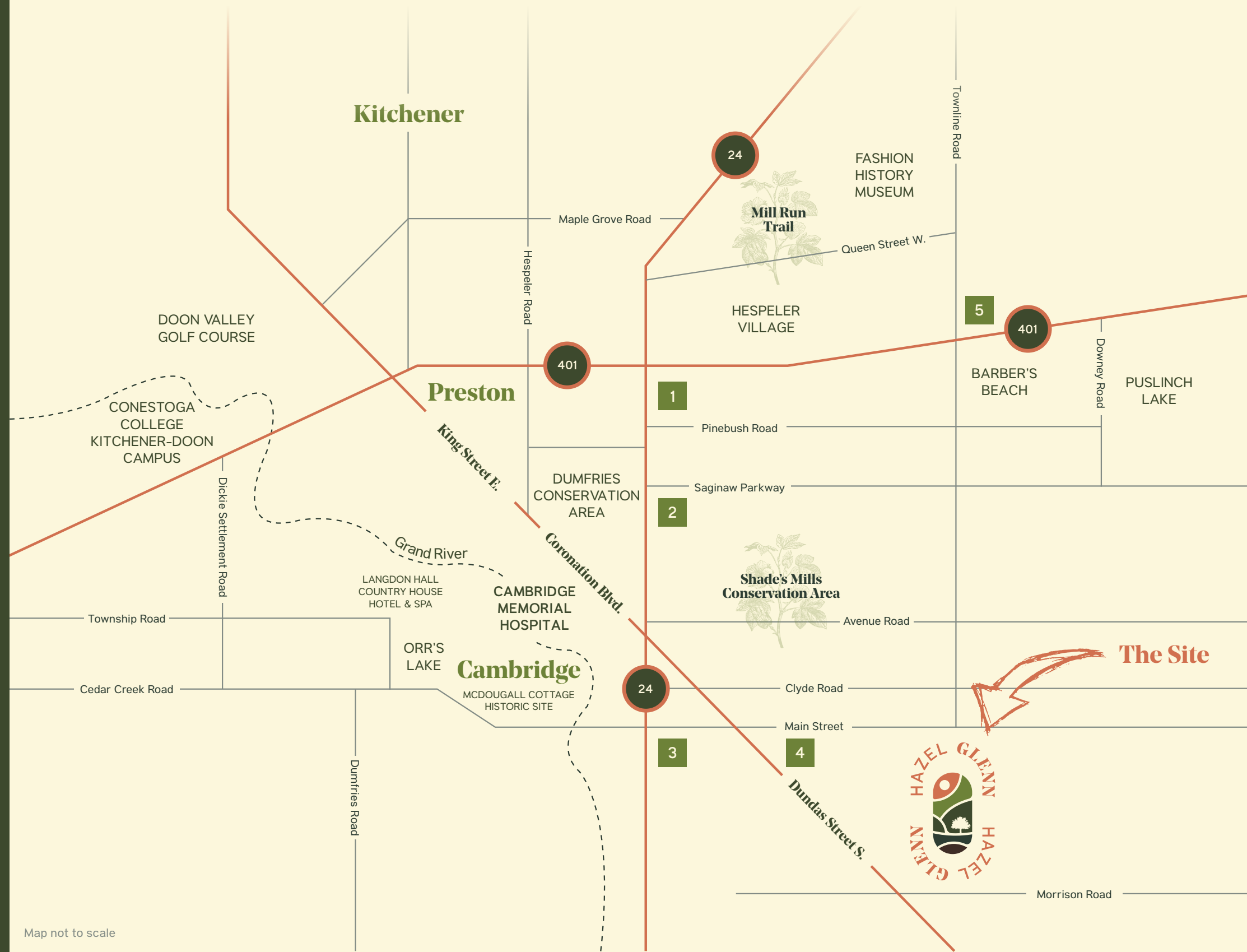
5

- Puslinch Lake Golf Course
- Puslinch Conservation Area
- Old Marina Restaurant/Gift Shop



Downtown Cambridge has a rich commercial history, and local initiatives have beautified and preserved the area. Now, it has also attracted unique businesses that are remaking life in this stunning Southern Ontario city.

Between the serene waterways and historic attractions, you have a wide selection of specialty stores, exceptional dining, as well as art, cultural, and recreational offerings. Spend the day exploring the local conservation areas and the picturesque Grand River waterfront. Take a day trip to one of the many historical sites, Langdon Hall, or golf courses. At Hazel Glenn, these opportunities are in your backyard.



Map not to scale



Discover Living in Cambridge



RENDERING IS ARTIST CONCEPT

T1 INTERIOR



Elevation A1 1,851 sq.ft.



Elevation A2 1,851 sq.ft.



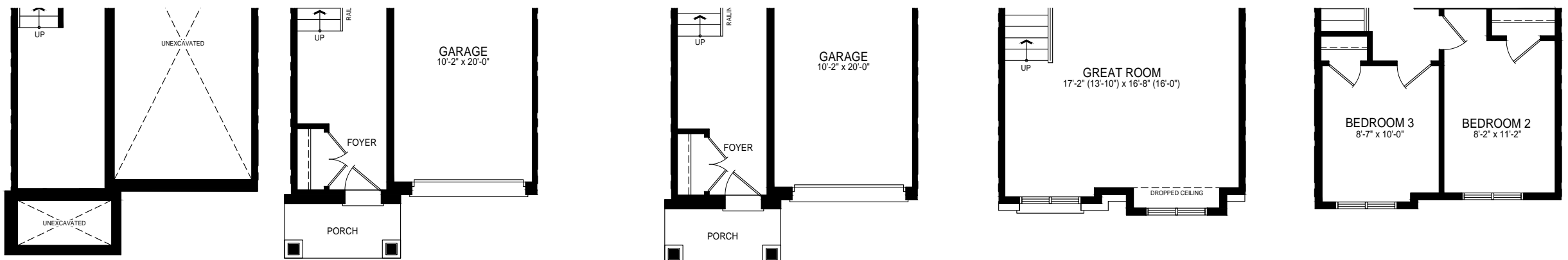
Basement Elev. A1

Ground Level Elev. A1

Opt. Ground Level Elev. A1

Main Level Elev. A1

Upper Level Floor Elev. A1



Basement Elev. A2

Ground Level Elev. A2

Opt. Ground Level Elev. A2

Main Level Elev. A2

Upper Level Elev. A2

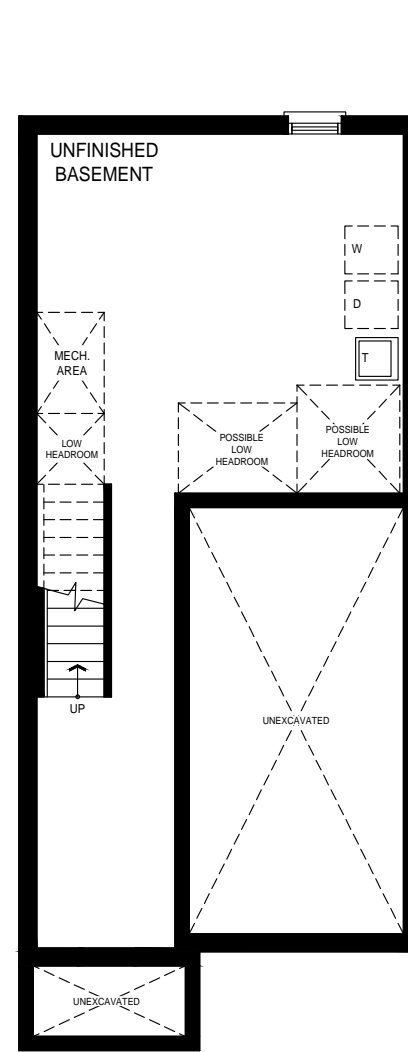
Hazel Glenn | TREASURE HILL

Steps and porches may vary at any exterior or garage entrance ways due to grading variance. Actual usable floor space may vary from stated floor area. All renderings are artist's concept. Dimensions, specifications, architectural and mechanical detailing are approximate and subject to minor modifications. E. & O. E.

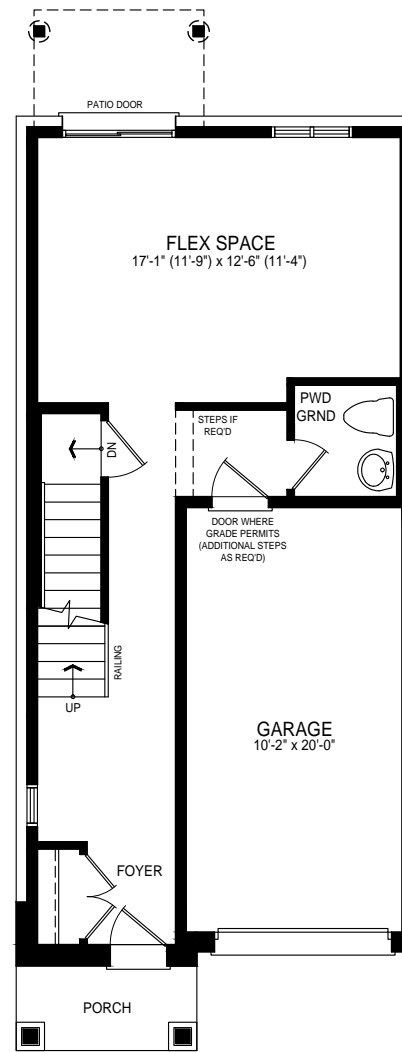
T1 END



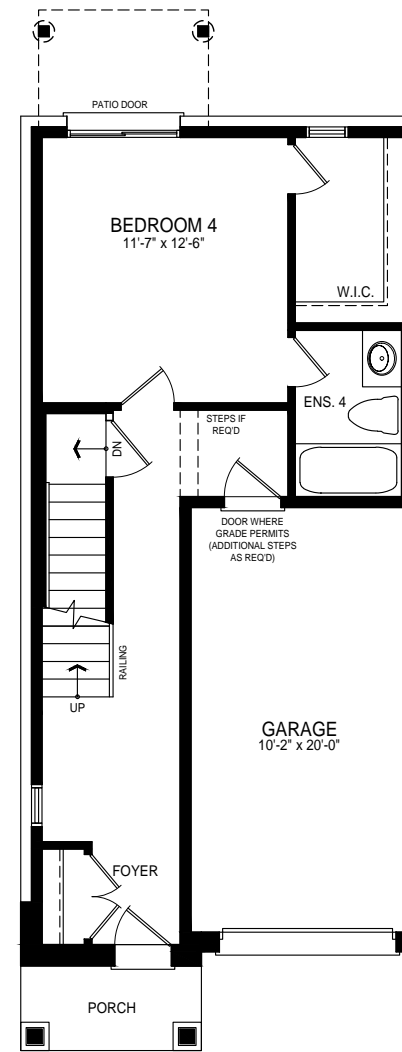
Elevation A1 1,864 sq.ft.



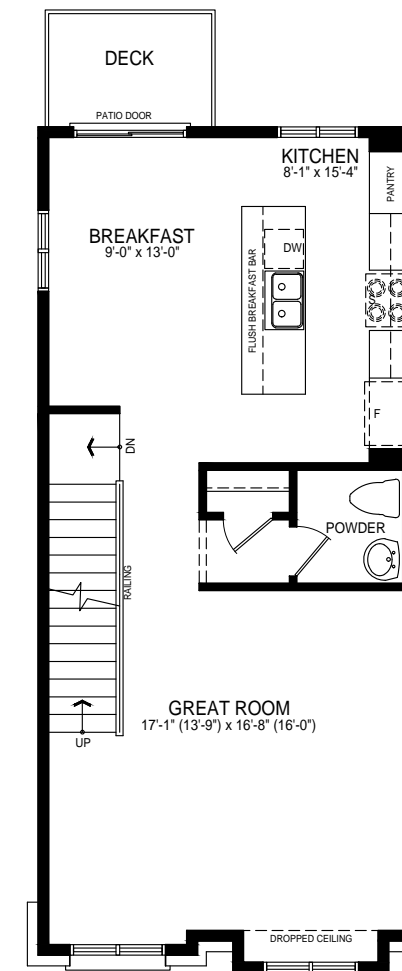
Basement Elev. A1



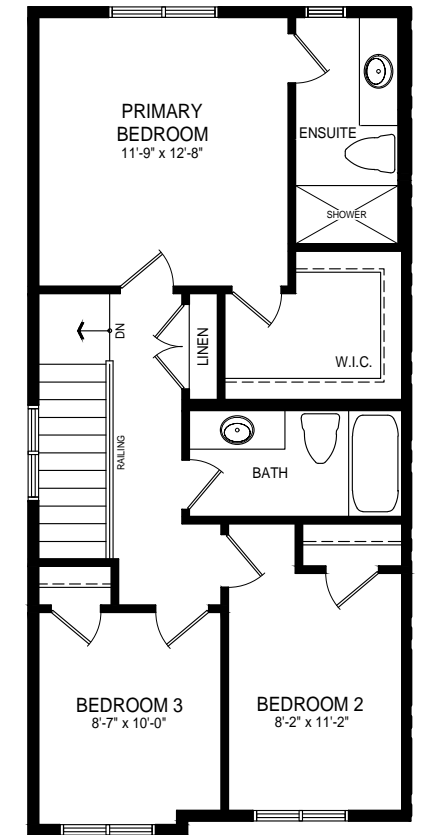
Ground Level Elev. A1



Opt. Ground Level Elev. A1



Main Level Elev. A1

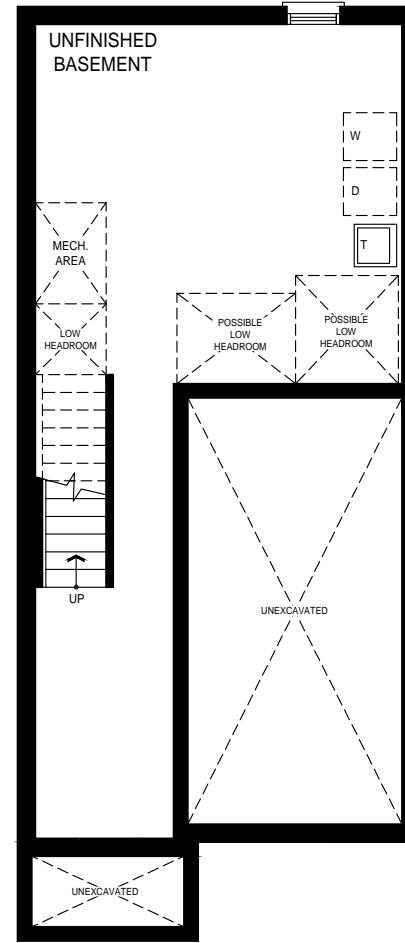


Upper Level Floor Elev. A1

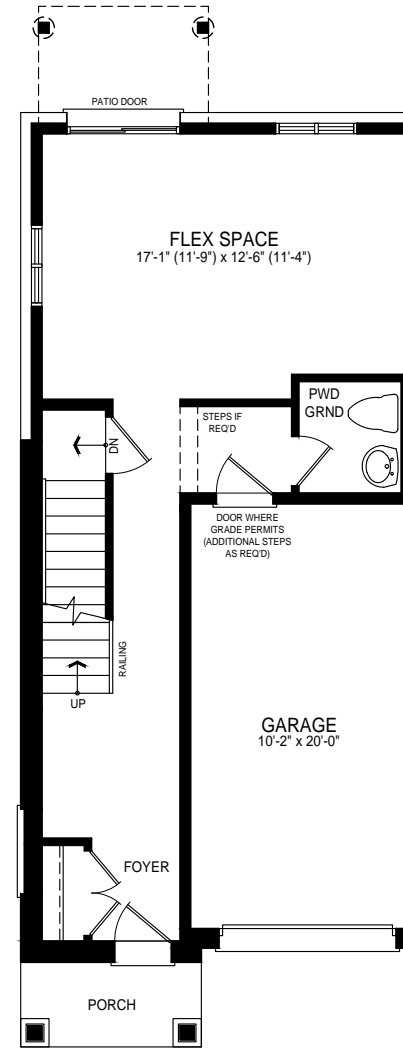
T1 CORNER



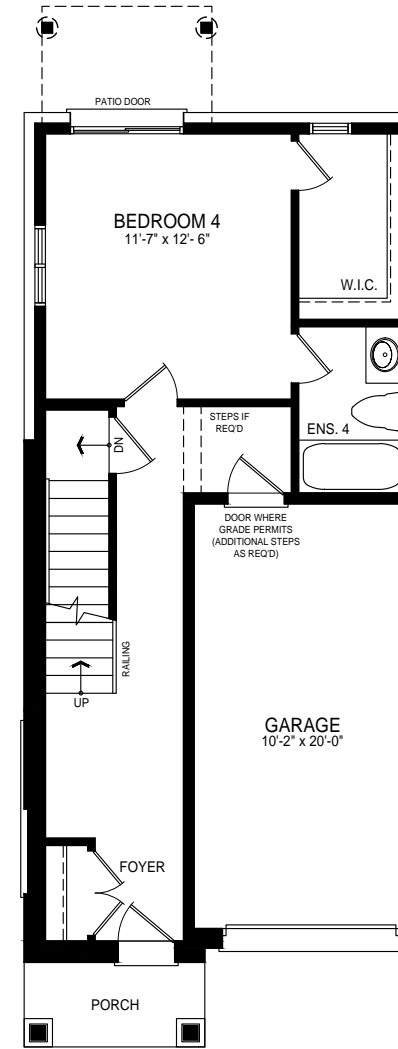
Elevation A1 1,881 sq.ft.



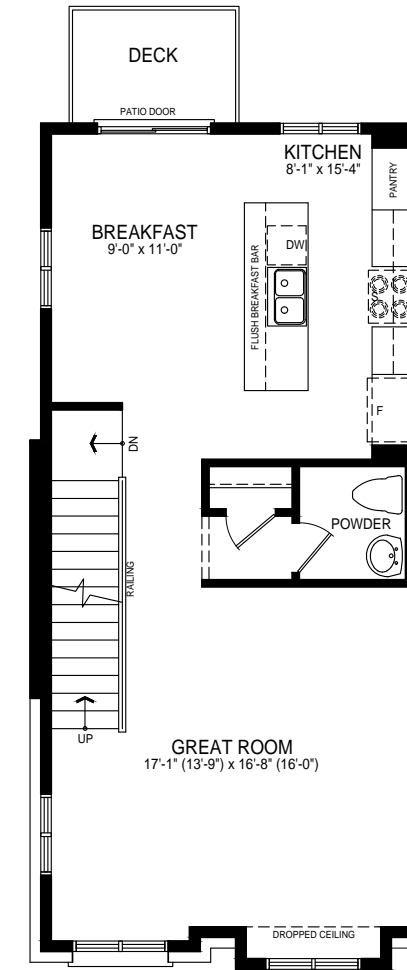
Basement Elev. A1



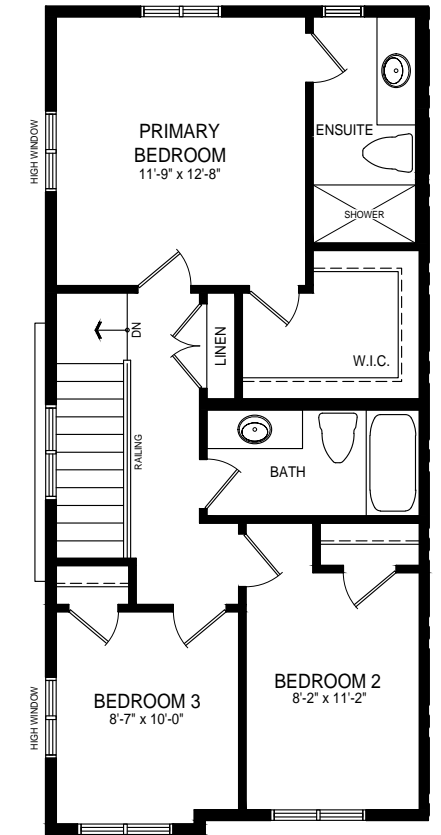
Ground Level Elev. A1



Opt. Ground Level Elev. A1



Main Level Elev. A1

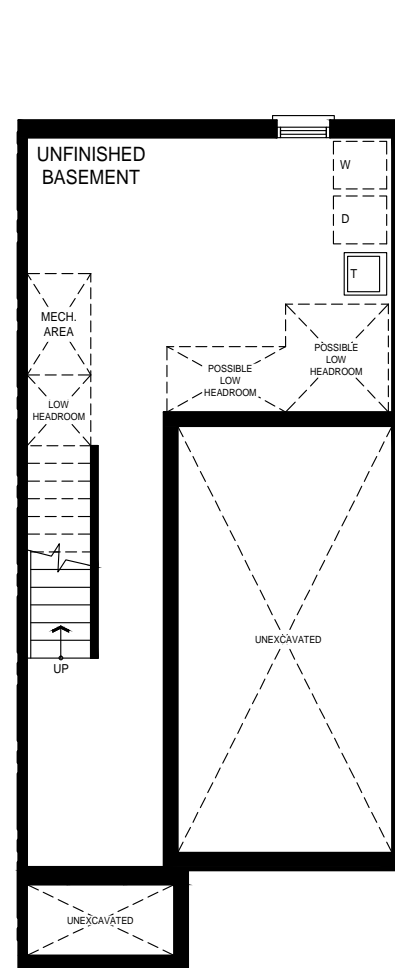


Upper Level Floor Elev. A1

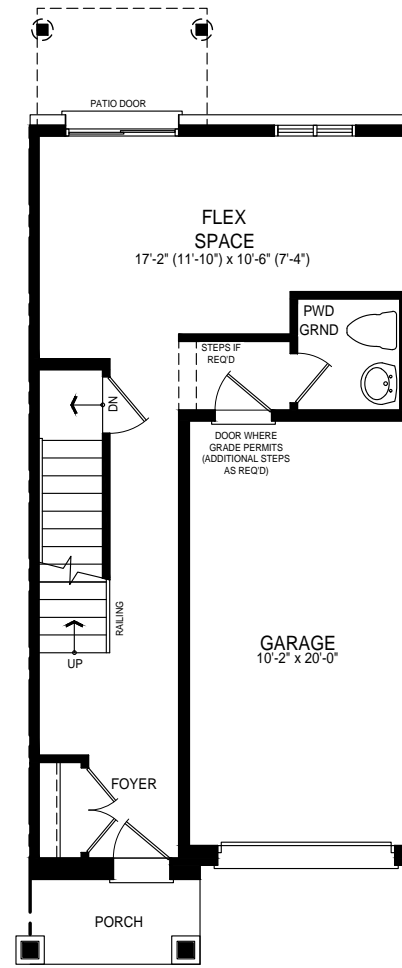
**BLK 4
INTERIOR
UNIT 23**



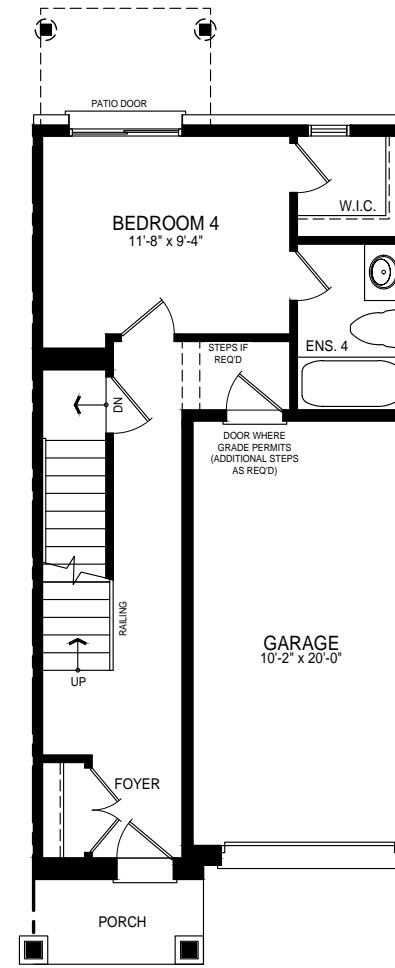
Elevation A1 1,632 sq.ft.



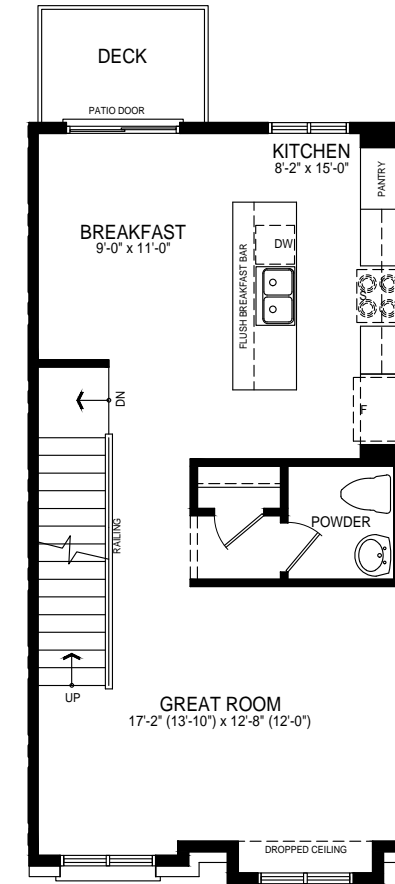
Basement Elev. A1



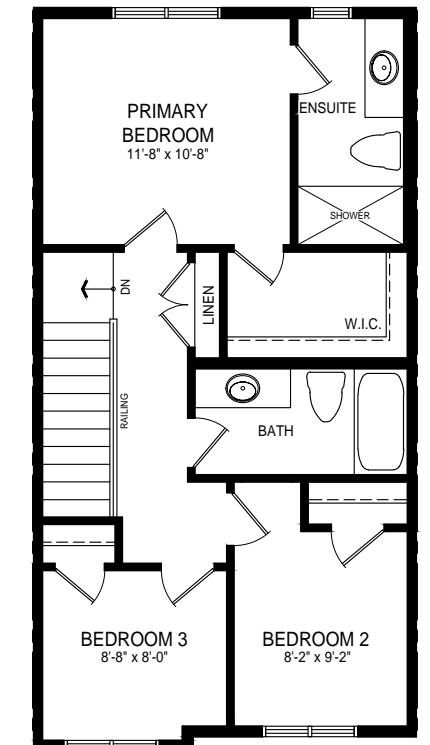
Ground Level Elev. A1



Opt. Ground Level Elev. A1



Main Level Elev. A1

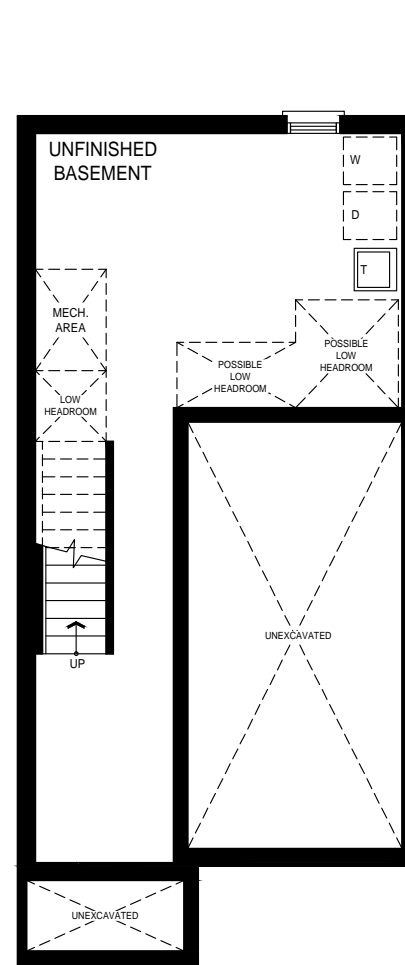


Upper Level Floor Elev. A1

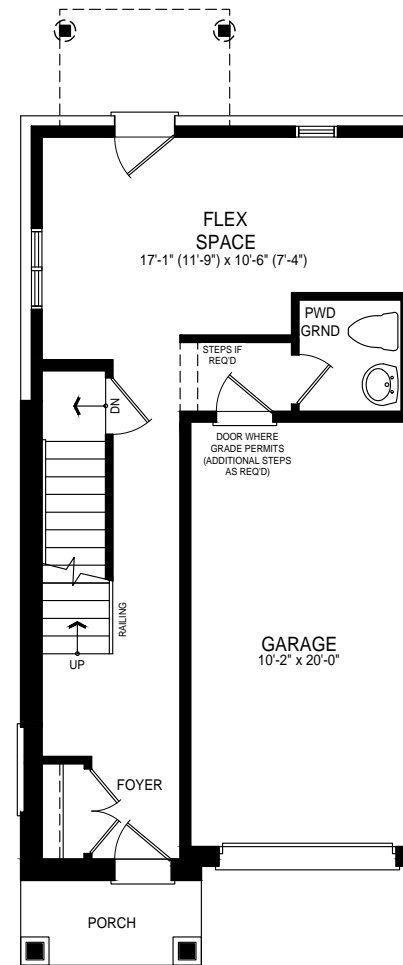
**BLK 4
CORNER
UNIT 22**



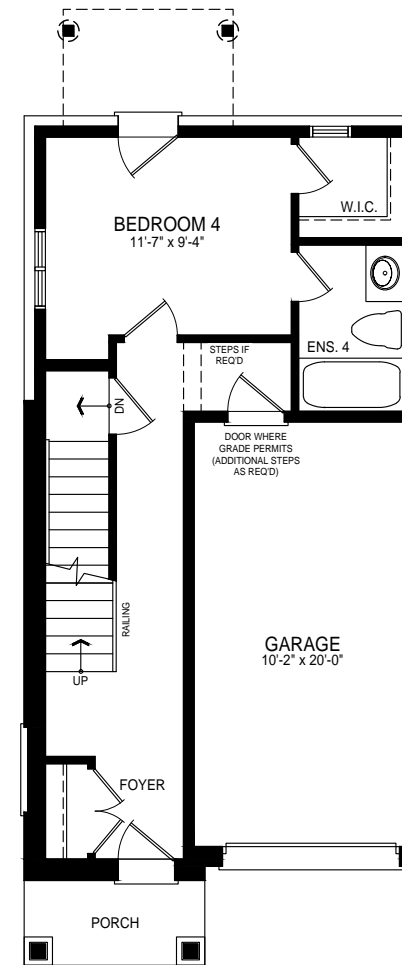
Elevation A1 1,662 sq.ft.



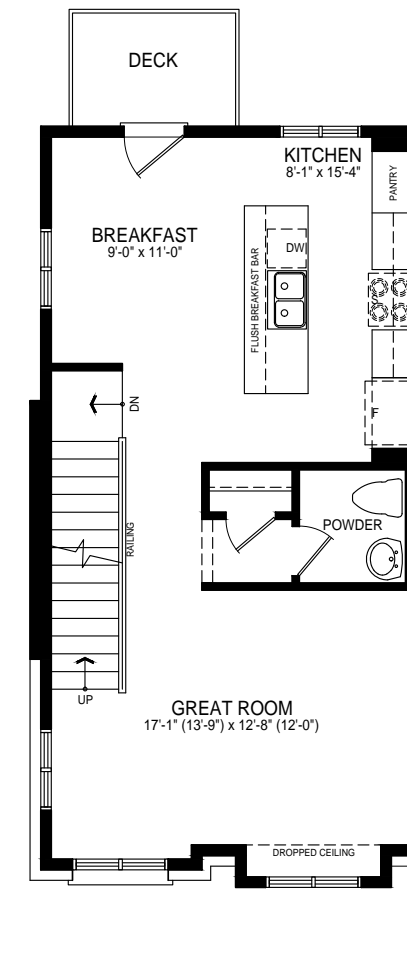
Basement Elev. A1



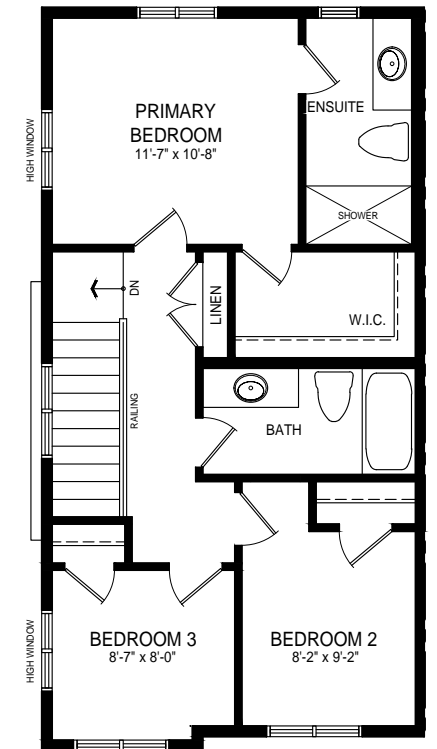
Ground Level Elev. A1



Opt. Ground Level Elev. A1



Main Level Elev. A1



Upper Level Floor Elev. A1

T

Treasure Hill builds the **finest quality** new homes with only the best materials & superior craftsmanship.



TREASURE HILL

Every Treasure Hill home combines many elements: an impressive floor plan, quality construction, great value, a convenient location, and most of all, a feeling that this is a place you'll want to call home.

H

Edenn Town Collection
BOWMANVILLE, ON



Nautica At Lakeshore Woods
OAKVILLE, ON



Reesor Ridge
MARKHAM, ON