



# CHURCHILL

Elevation A | 38' Single

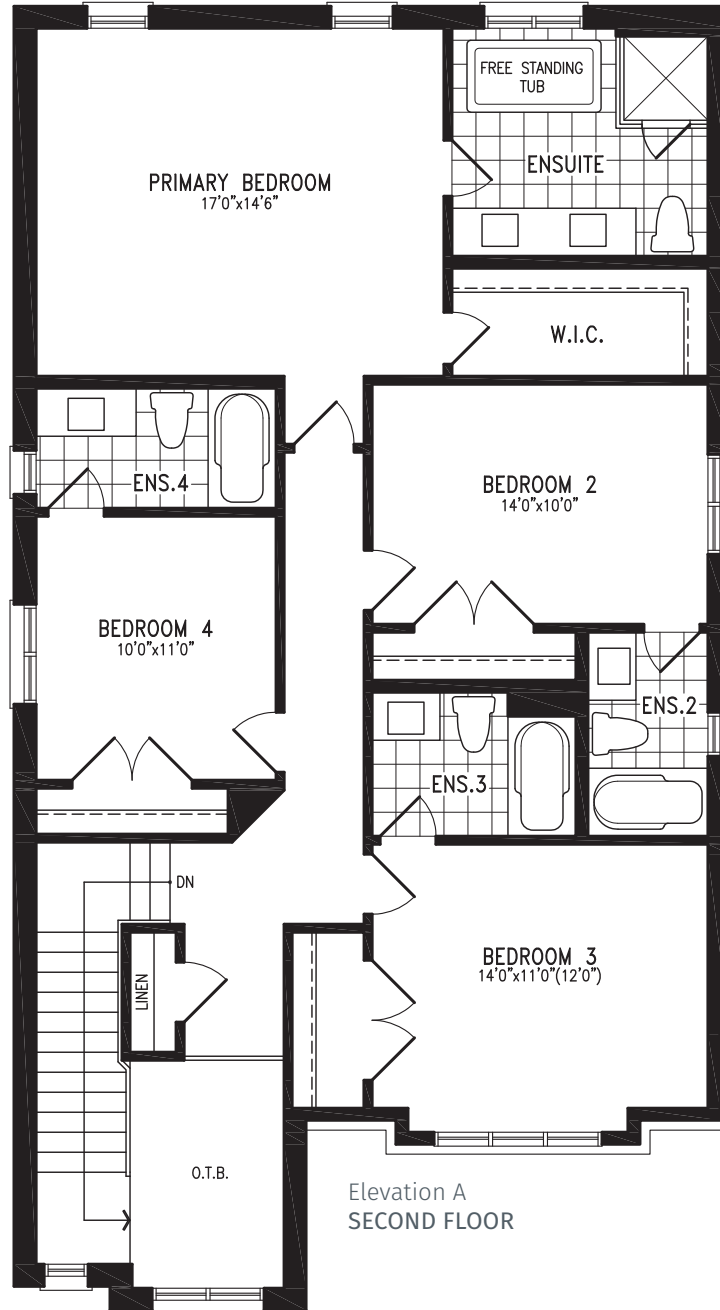




# CHURCHILL

Elevation A | 38' single

2,602 SQ.FT.



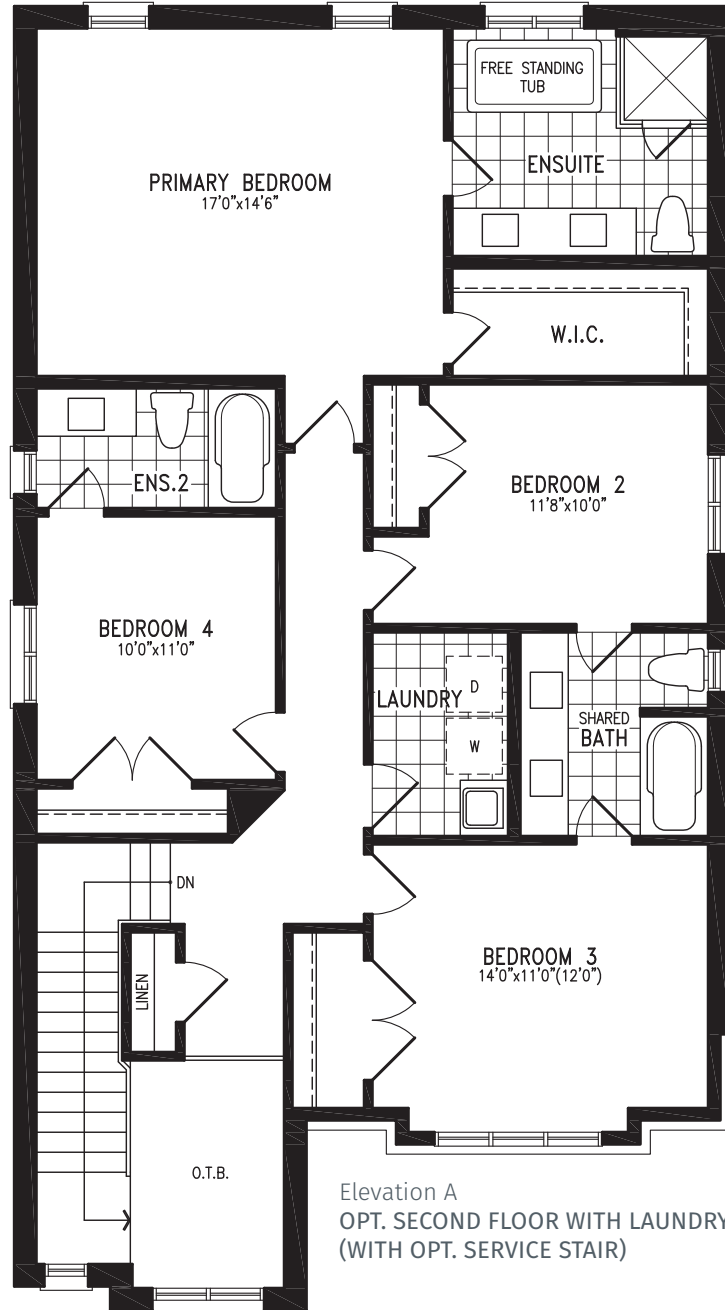
CHURCHILL UC38-1 prices & specifications subject to change without notice. Useable square footage may vary from that stated herein. Artists concept only E. & O. E. © 2023 CountryWide Homes. All rights reserved.



# CHURCHILL

Elevation A | 38' single

2,602 SQ.FT.



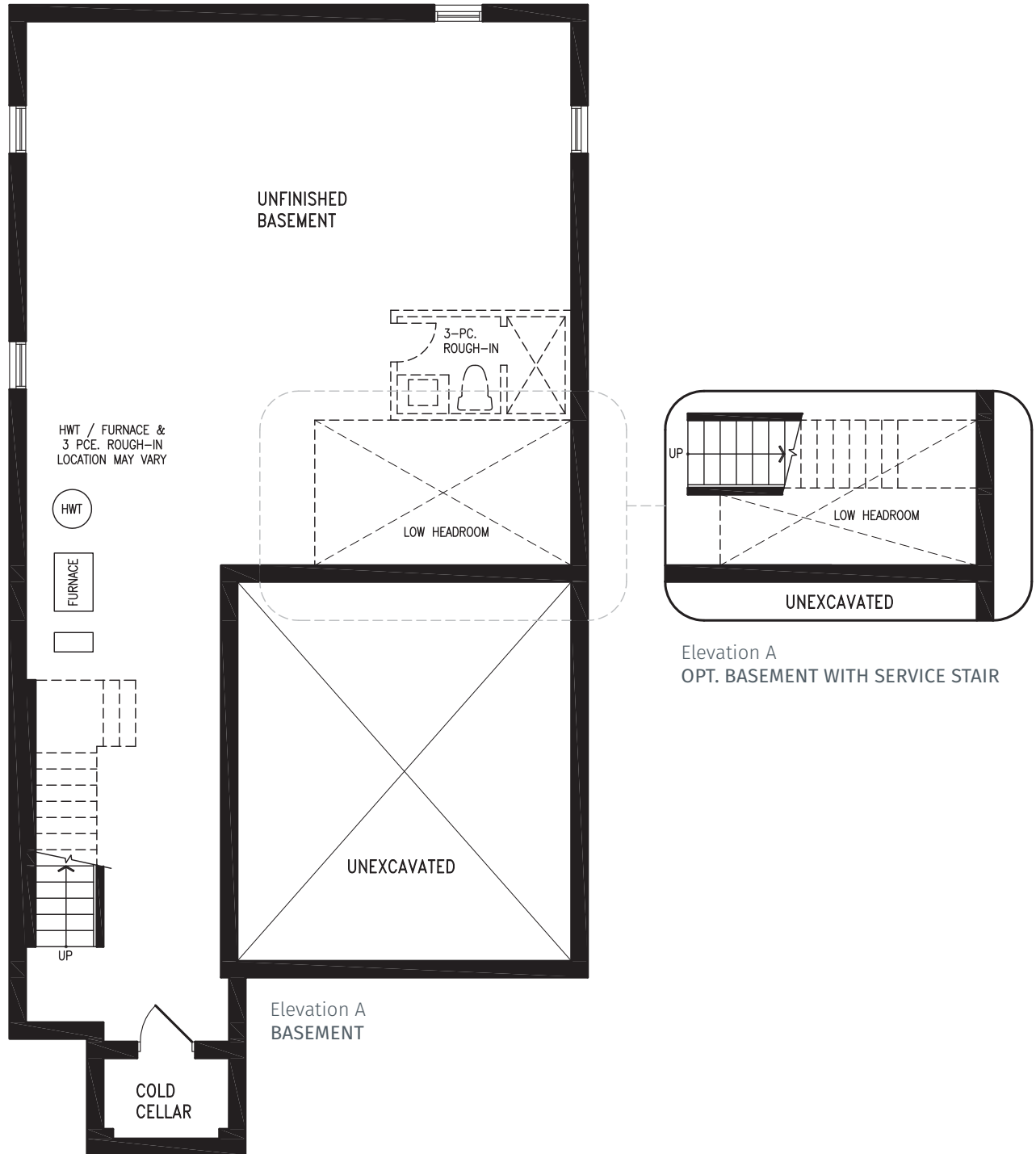
CHURCHILL UC38-1 prices & specifications subject to change without notice. Useable square footage may vary from that stated herein. Artists concept only E. & O. E. © 2023 CountryWide Homes. All rights reserved.



# CHURCHILL

2,602 SQ.FT.

Elevation A | 38' single



Elevation A  
OPT. BASEMENT WITH SERVICE STAIR



CHURCHILL UC38-1 prices & specifications subject to change without notice. Useable square footage may vary from that stated herein. Artists concept only E. & O. E. © 2023 CountryWide Homes. All rights reserved.







UPPER  
CALEDON  
EAST



# CHURCHILL

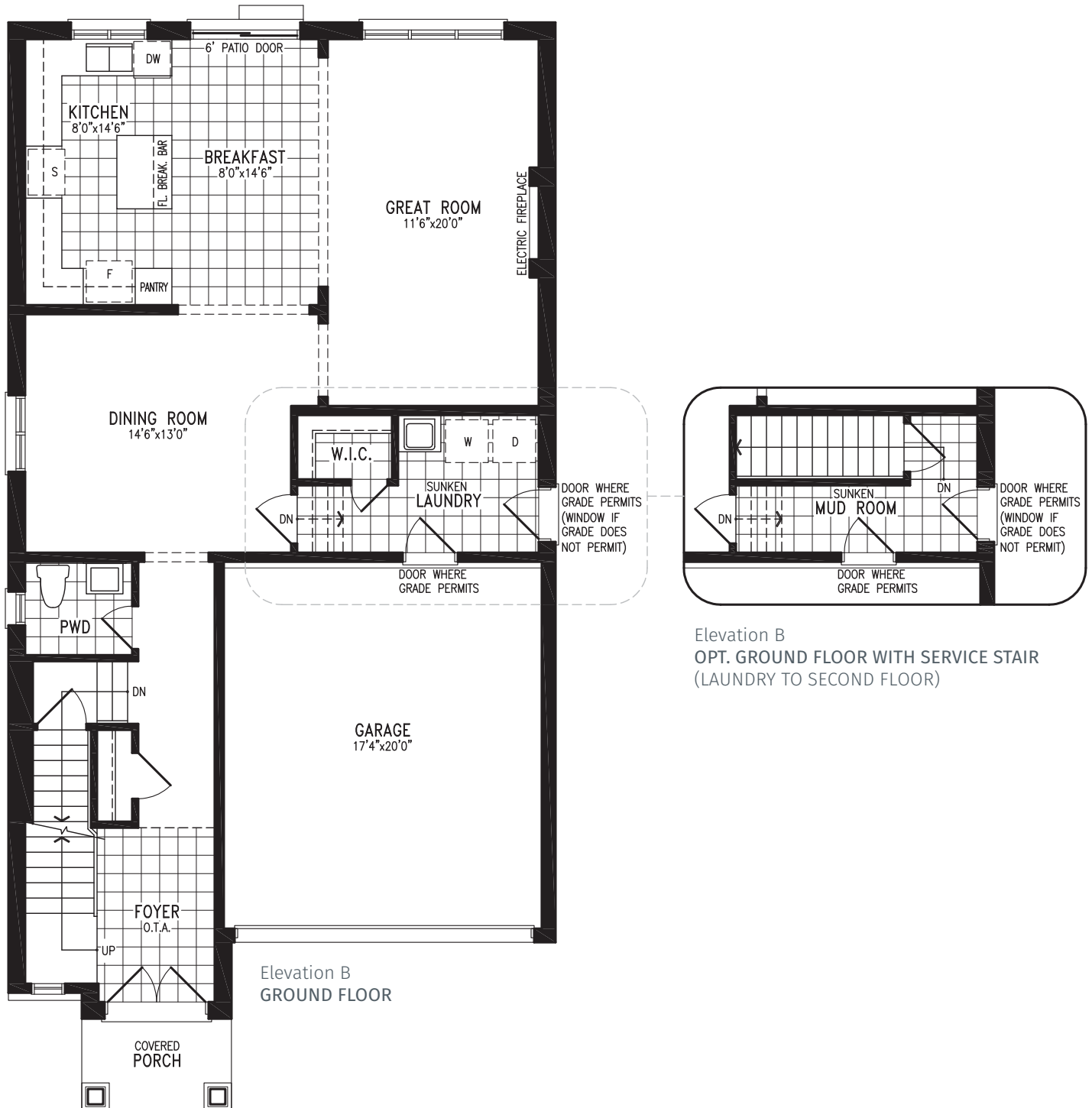
Elevation B | 38' Single



# CHURCHILL

2,590 SQ.FT.

Elevation B | 38' single



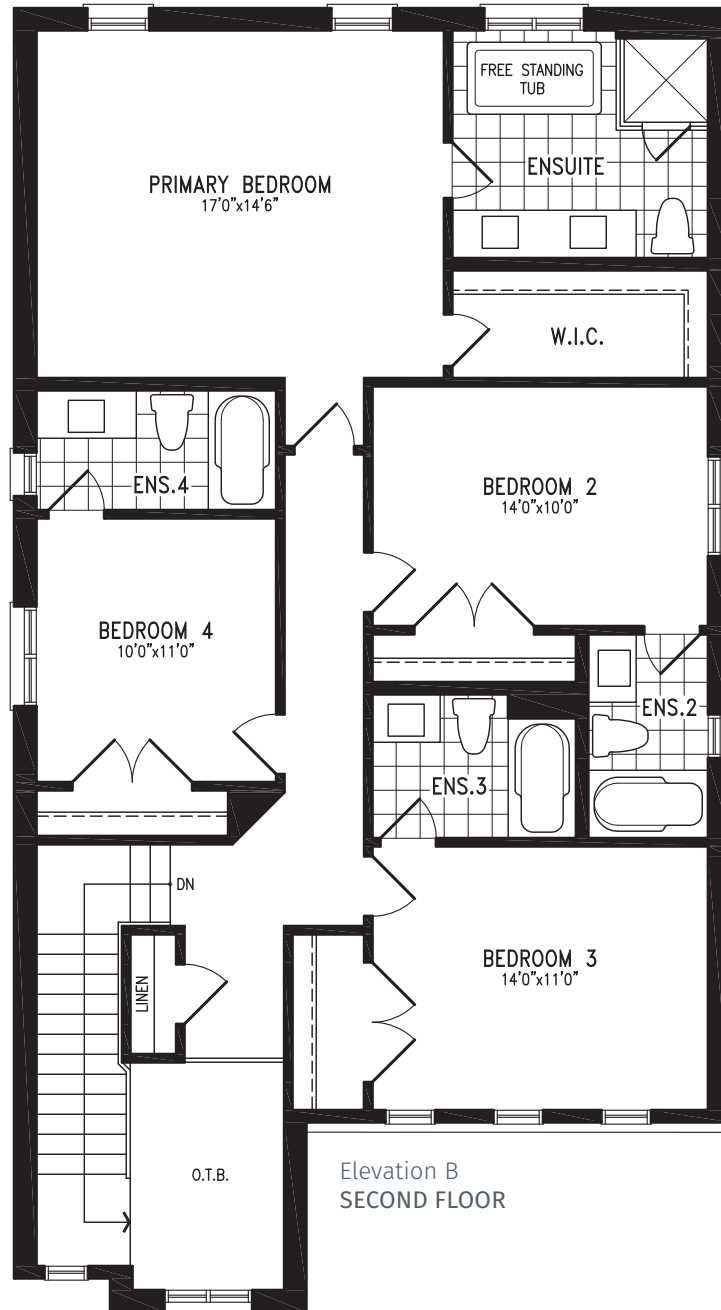
CHURCHILL UC38-1 prices & specifications subject to change without notice. Useable square footage may vary from that stated herein. Artists concept only E. & O. E. © 2023 CountryWide Homes. All rights reserved.



# CHURCHILL

Elevation B | 38' single

2,590 SQ.FT.



CHURCHILL UC38-1 prices & specifications subject to change without notice. Useable square footage may vary from that stated herein. Artists concept only E. & O. E. © 2023 CountryWide Homes. All rights reserved.

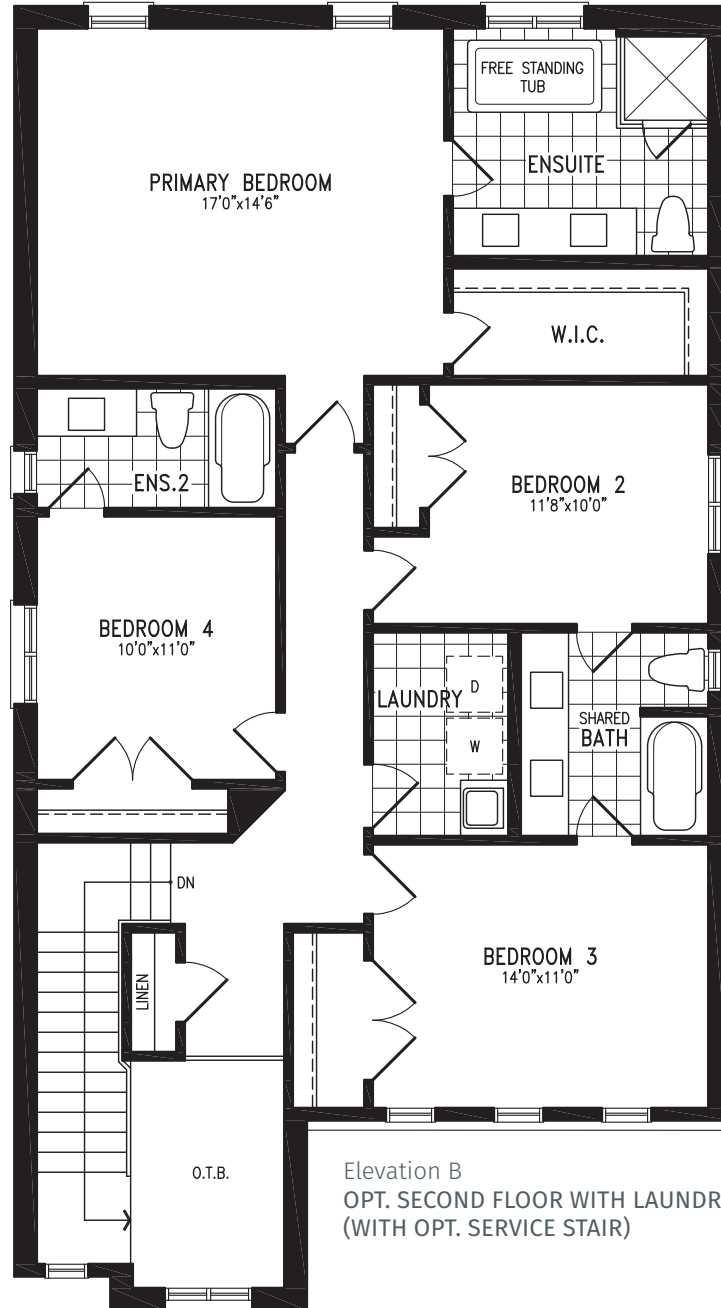




# CHURCHILL

Elevation B | 38' single

2,590 SQ.FT.



Elevation B  
OPT. SECOND FLOOR WITH LAUNDRY  
(WITH OPT. SERVICE STAIR)



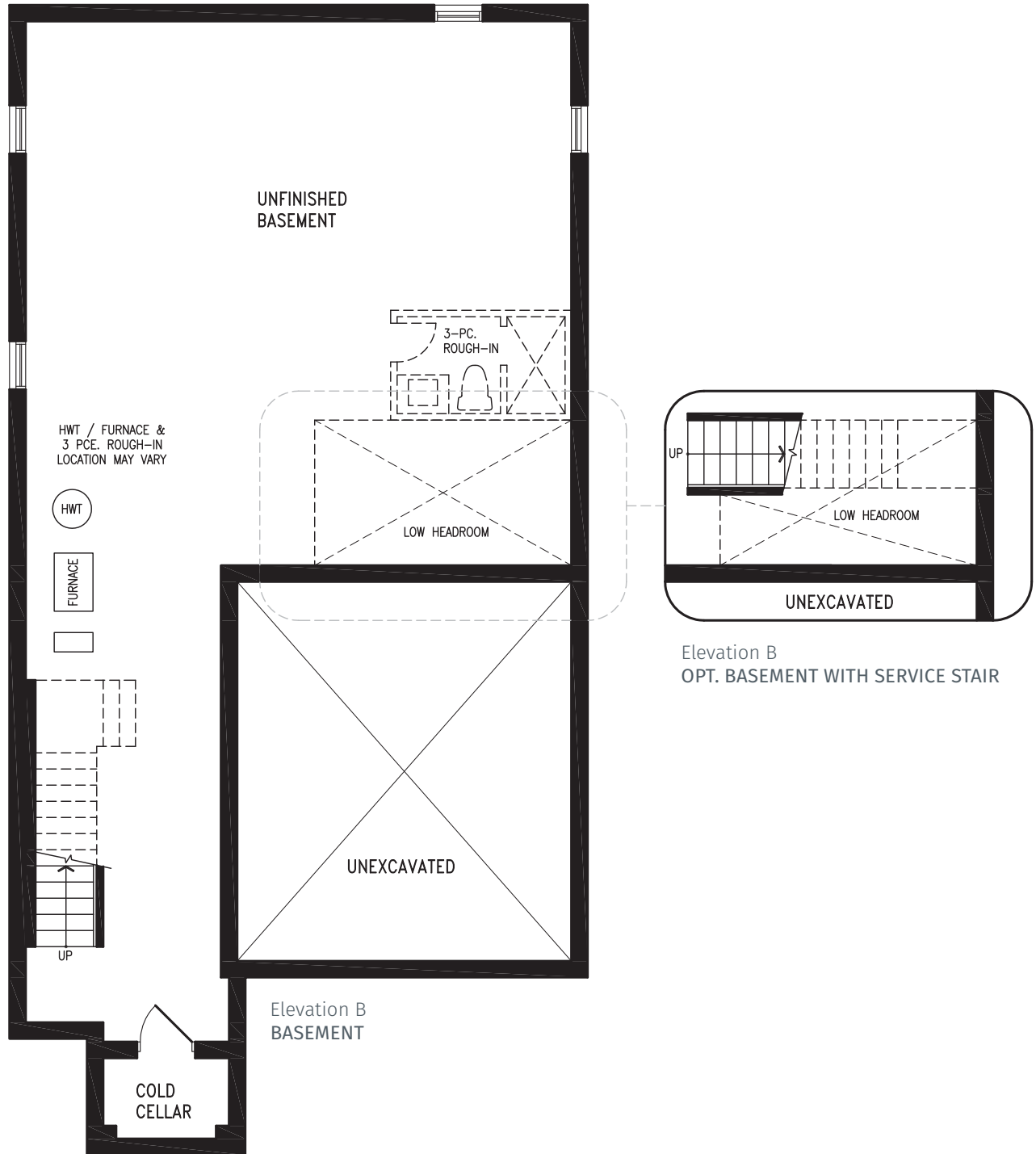
CHURCHILL UC38-1 prices & specifications subject to change without notice. Useable square footage may vary from that stated herein. Artists concept only E. & O. E. © 2023 CountryWide Homes. All rights reserved.



# CHURCHILL

2,590 SQ.FT.

Elevation B | 38' single



CHURCHILL UC38-1 prices & specifications subject to change without notice. Useable square footage may vary from that stated herein. Artists concept only E. & O. E. © 2023 CountryWide Homes. All rights reserved.





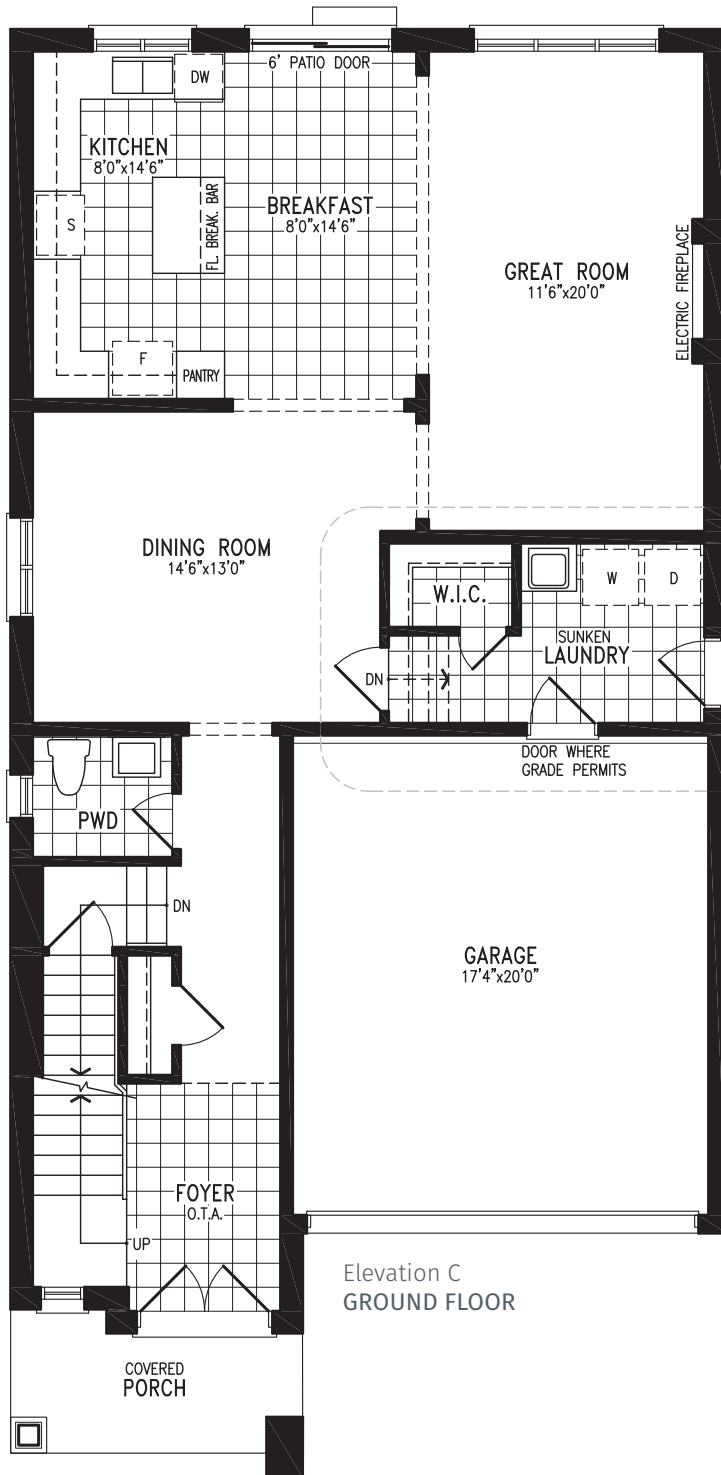
# CHURCHILL

Elevation C | 38' Single

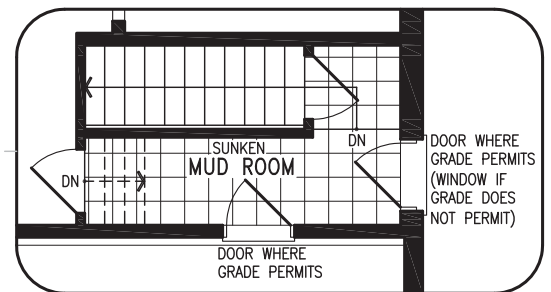
# CHURCHILL

2,604 SQ.FT.

Elevation C | 38' single



Elevation C  
GROUND FLOOR



Elevation C  
OPT. GROUND FLOOR WITH SERVICE STAIR  
(LAUNDRY TO SECOND FLOOR)



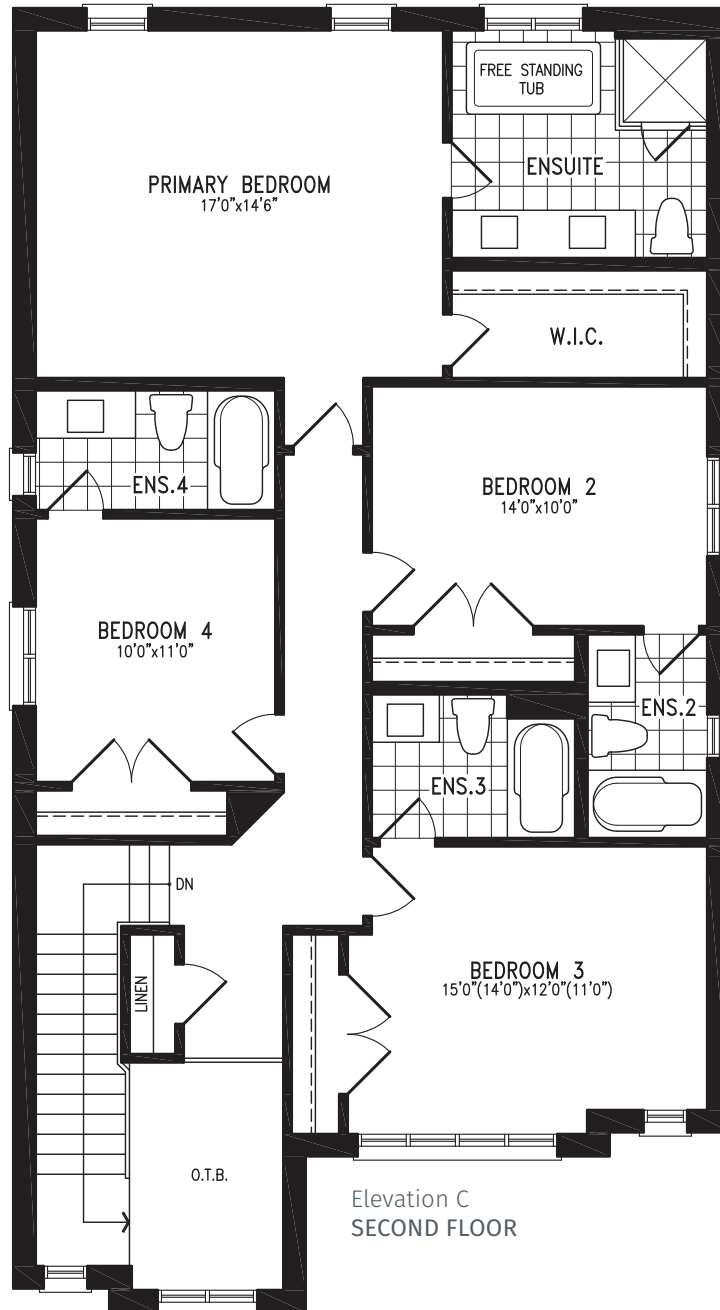
CHURCHILL UC38-1 prices & specifications subject to change without notice. Useable square footage may vary from that stated herein. Artists concept only E. & O. E. © 2023 CountryWide Homes. All rights reserved.



# CHURCHILL

Elevation C | 38' single

2,604 SQ.FT.



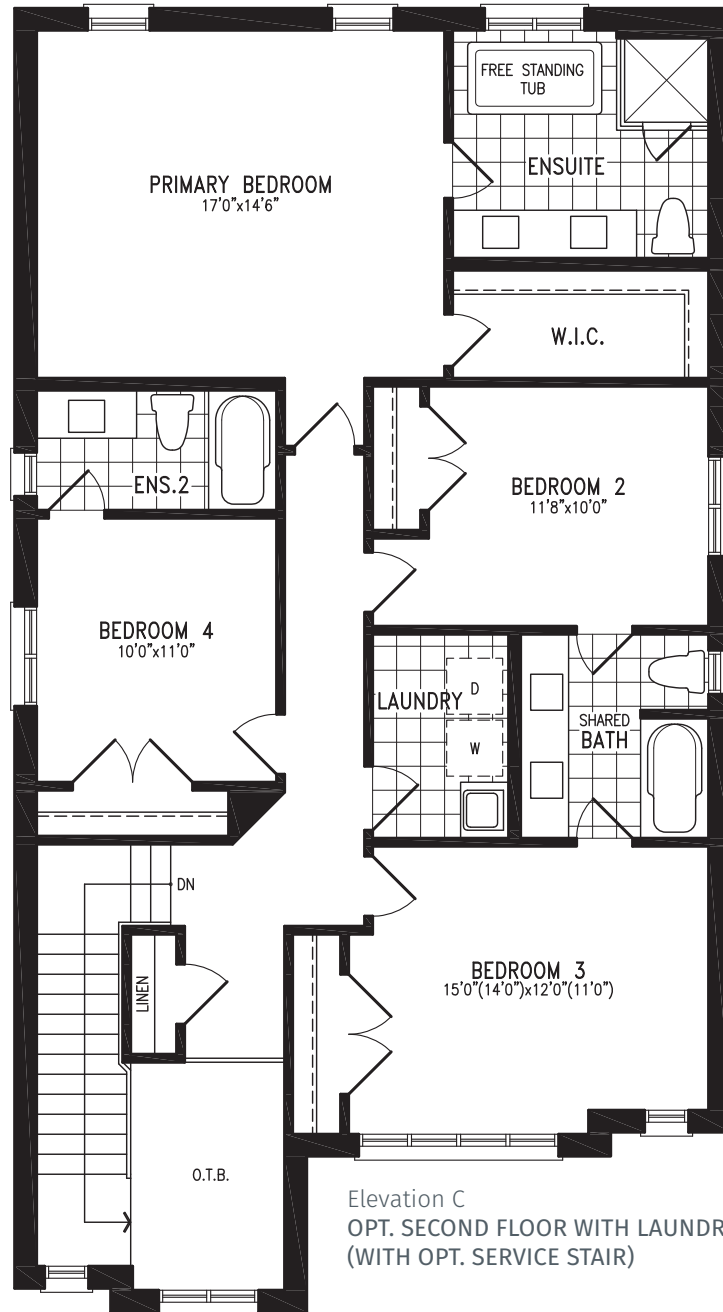
CHURCHILL UC38-1 prices & specifications subject to change without notice. Useable square footage may vary from that stated herein. Artists concept only E. & O. E. © 2023 CountryWide Homes. All rights reserved.



# CHURCHILL

Elevation C | 38' single

2,604 SQ.FT.



CHURCHILL UC38-1 prices & specifications subject to change without notice. Useable square footage may vary from that stated herein. Artists concept only E. & O. E. © 2023 CountryWide Homes. All rights reserved.

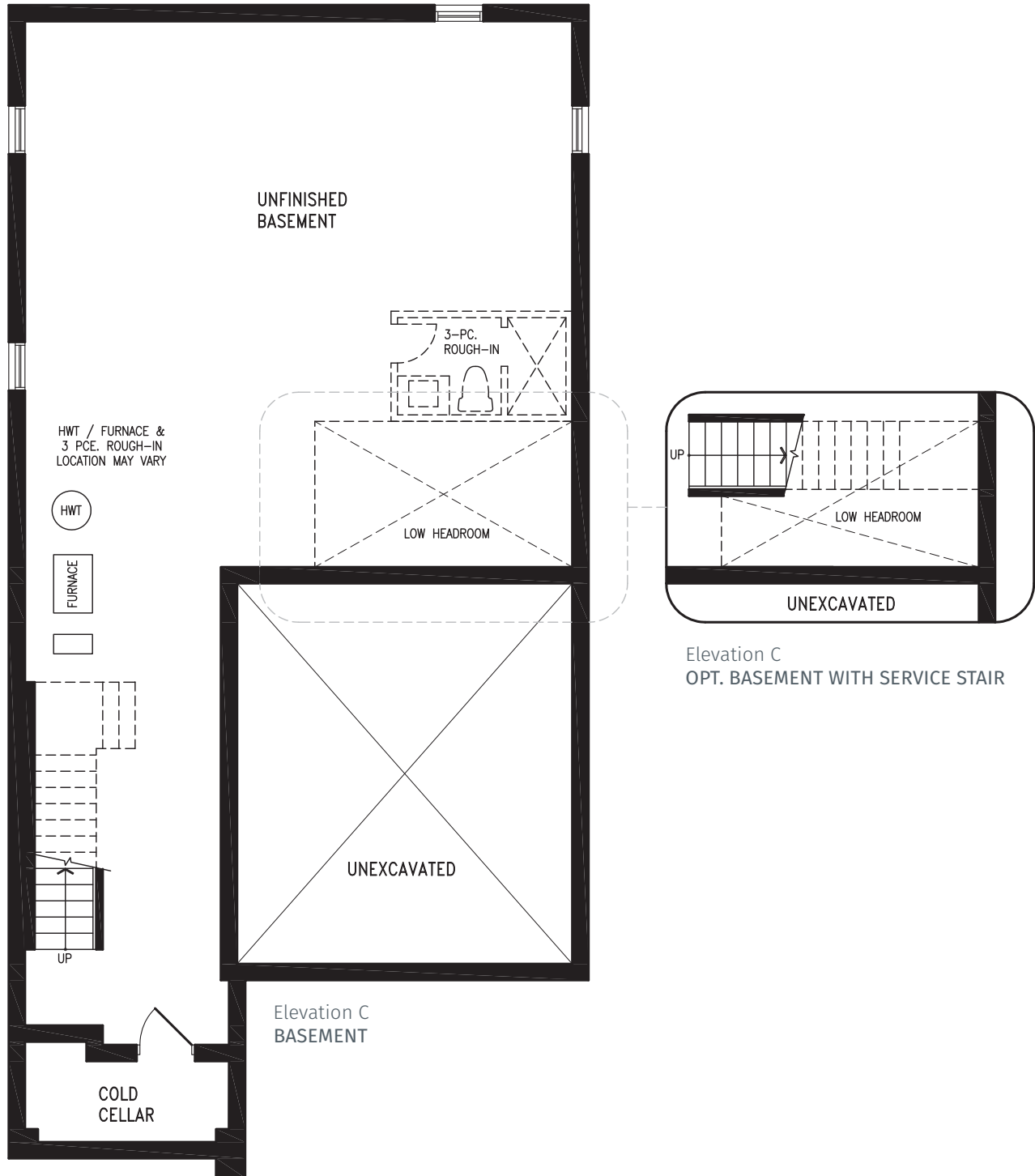




# CHURCHILL

2,604 SQ.FT.

Elevation C | 38' single



Elevation C  
BASEMENT

Elevation C  
OPT. BASEMENT WITH SERVICE STAIR



CHURCHILL UC38-1 prices & specifications subject to change without notice. Useable square footage may vary from that stated herein. Artists concept only E. & O. E. © 2023 CountryWide Homes. All rights reserved.





UPPER  
CALEDON  
EAST



# PIMLICO

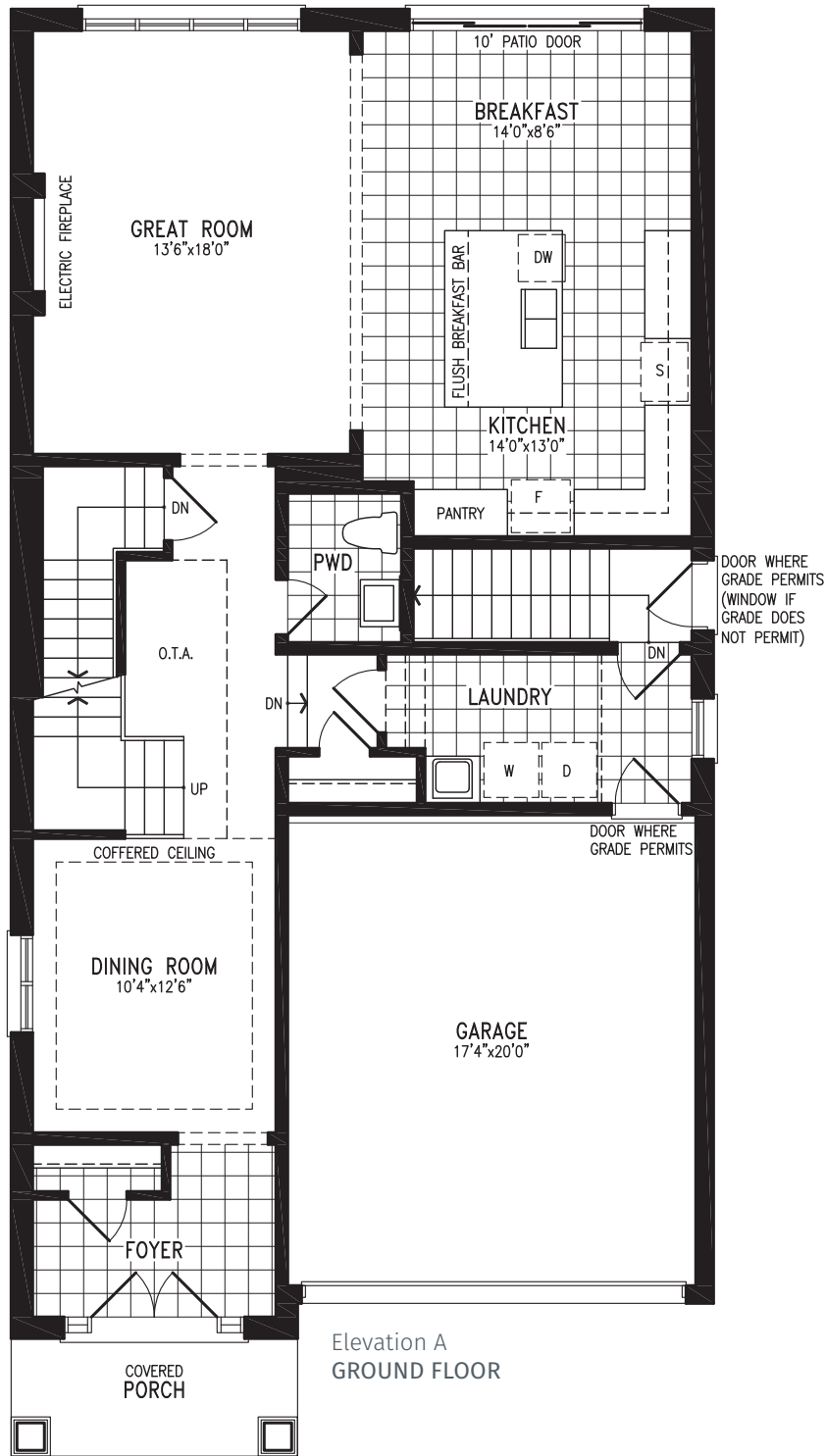
Elevation A | 38' Single



# PIMLICO

Elevation A | 38' single

2,806 SQ.FT.



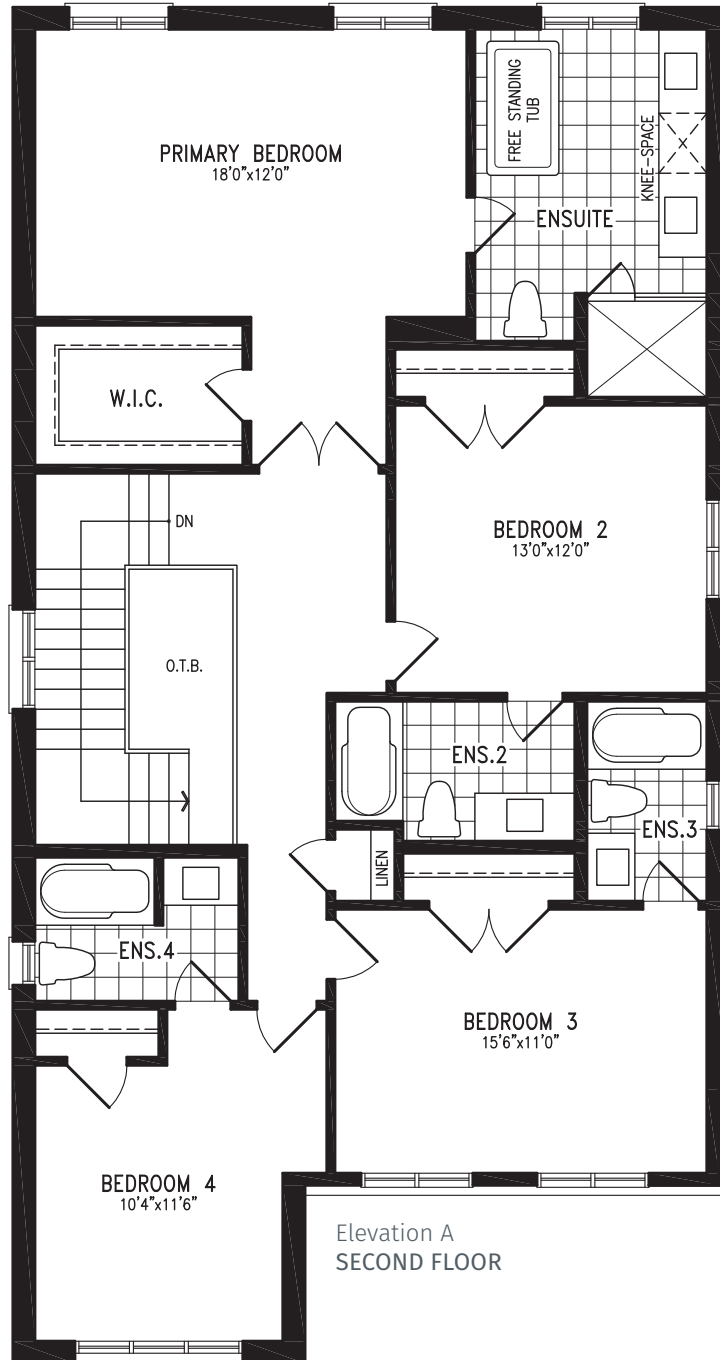
PIMLICO UC38-2 prices & specifications subject to change without notice. Useable square footage may vary from that stated herein. Artists concept only E. & O. E. © 2023 CountryWide Homes. All rights reserved.



# PIMLICO

Elevation A | 38' single

2,806 SQ.FT.



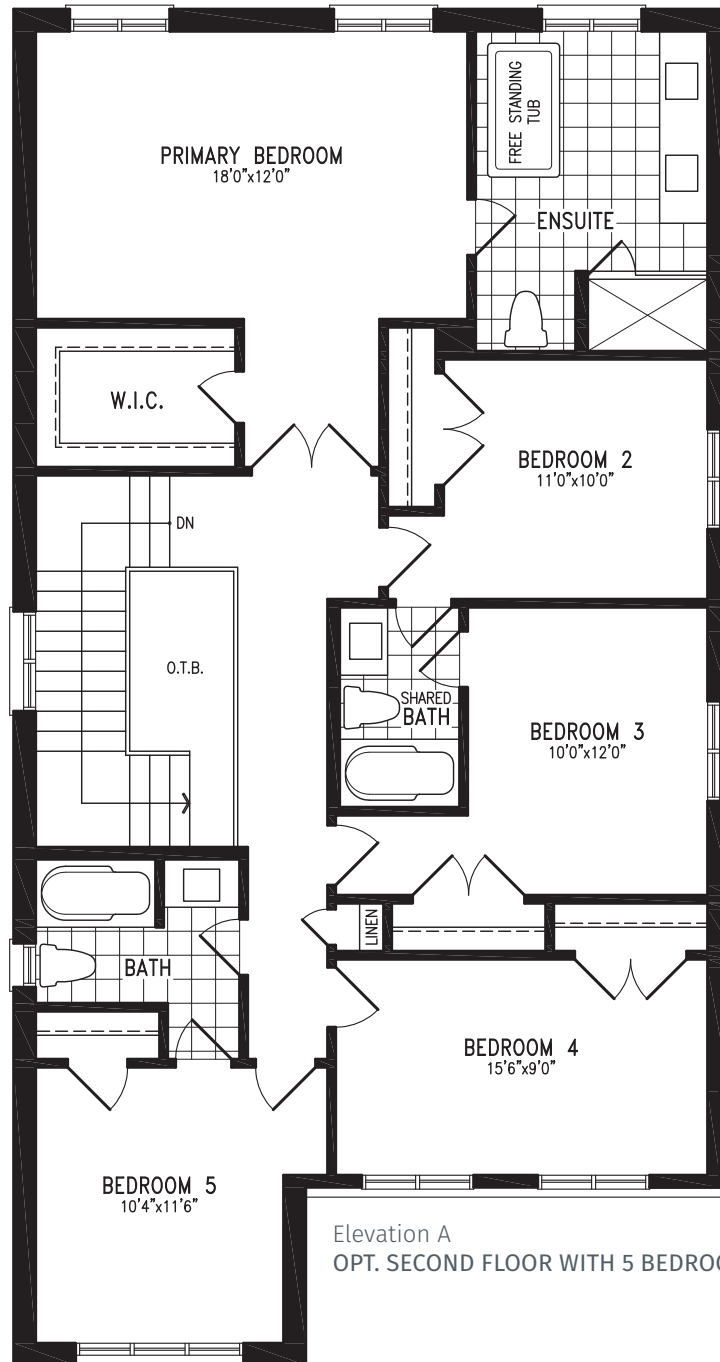
PIMLICO UC38-2 prices & specifications subject to change without notice. Useable square footage may vary from that stated herein. Artists concept only E. & O. E. © 2023 CountryWide Homes. All rights reserved.



# PIMLICO

Elevation A | 38' single

2,806 SQ.FT.



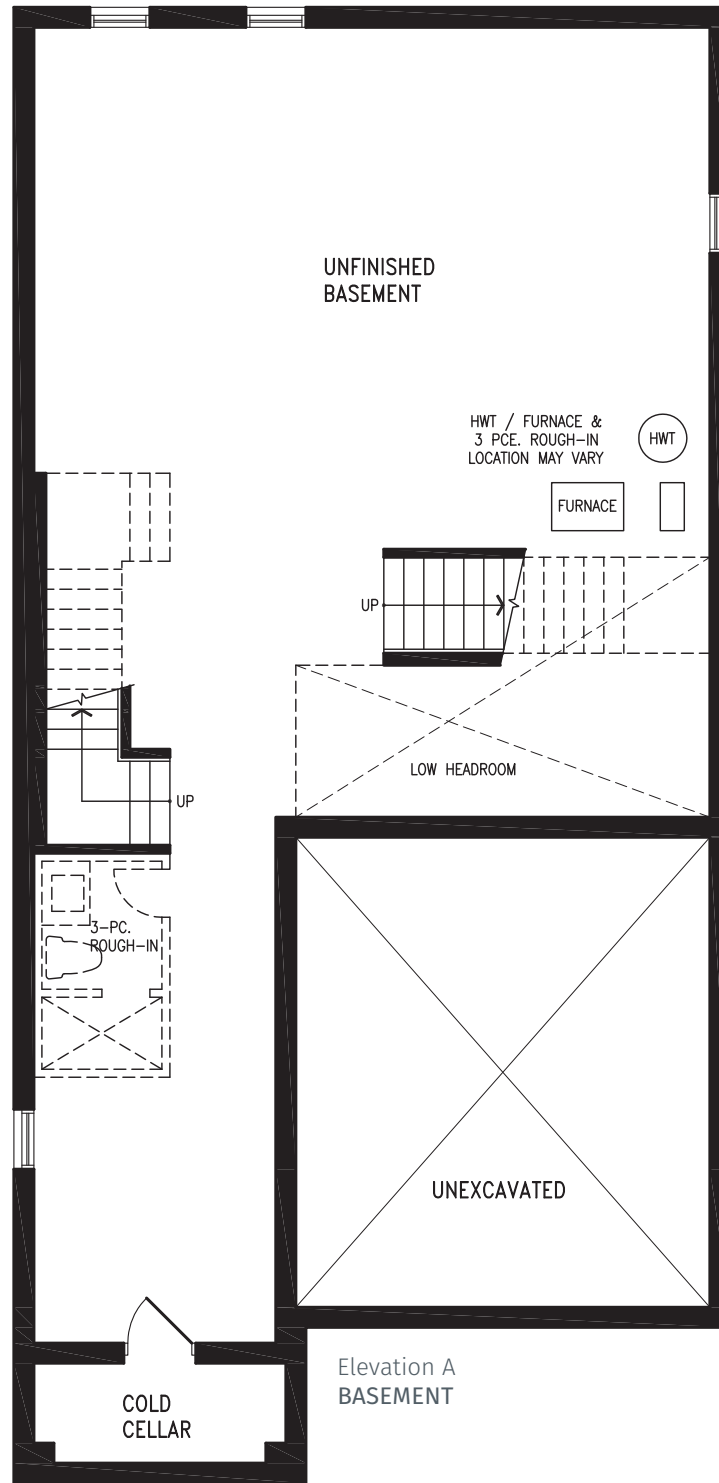
PIMLICO UC38-2 prices & specifications subject to change without notice. Useable square footage may vary from that stated herein. Artists concept only E. & O. E. © 2023 CountryWide Homes. All rights reserved.



# PIMLICO

Elevation A | 38' single

2,806 SQ.FT.



PIMLICO UC38-2 prices & specifications subject to change without notice. Useable square footage may vary from that stated herein. Artists concept only E. & O. E. © 2023 CountryWide Homes. All rights reserved.







UPPER  
CALEDON  
EAST



# PIMLICO

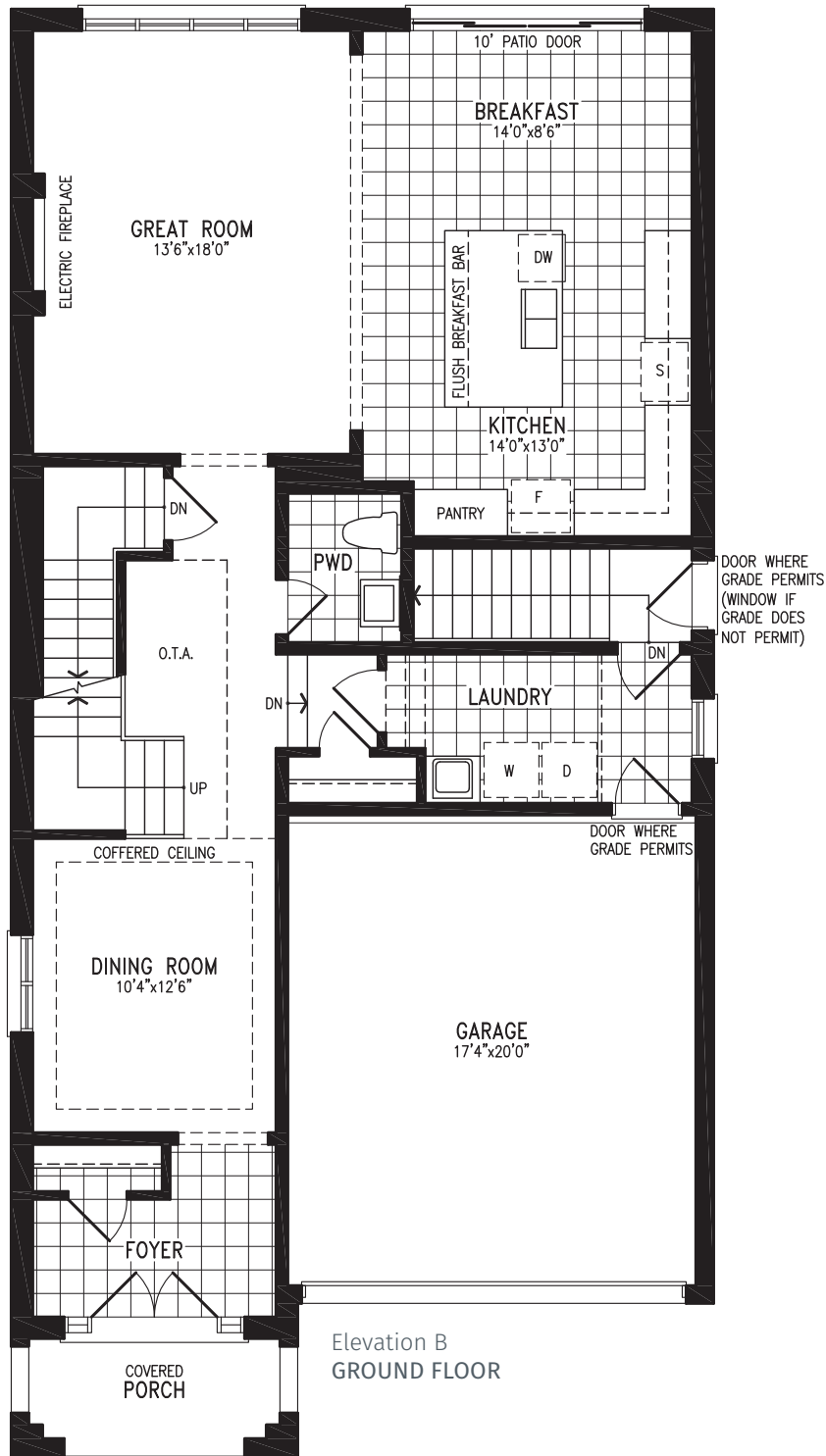
Elevation B | 38' Single



# PIMLICO

Elevation B | 38' single

2,806 SQ.FT.



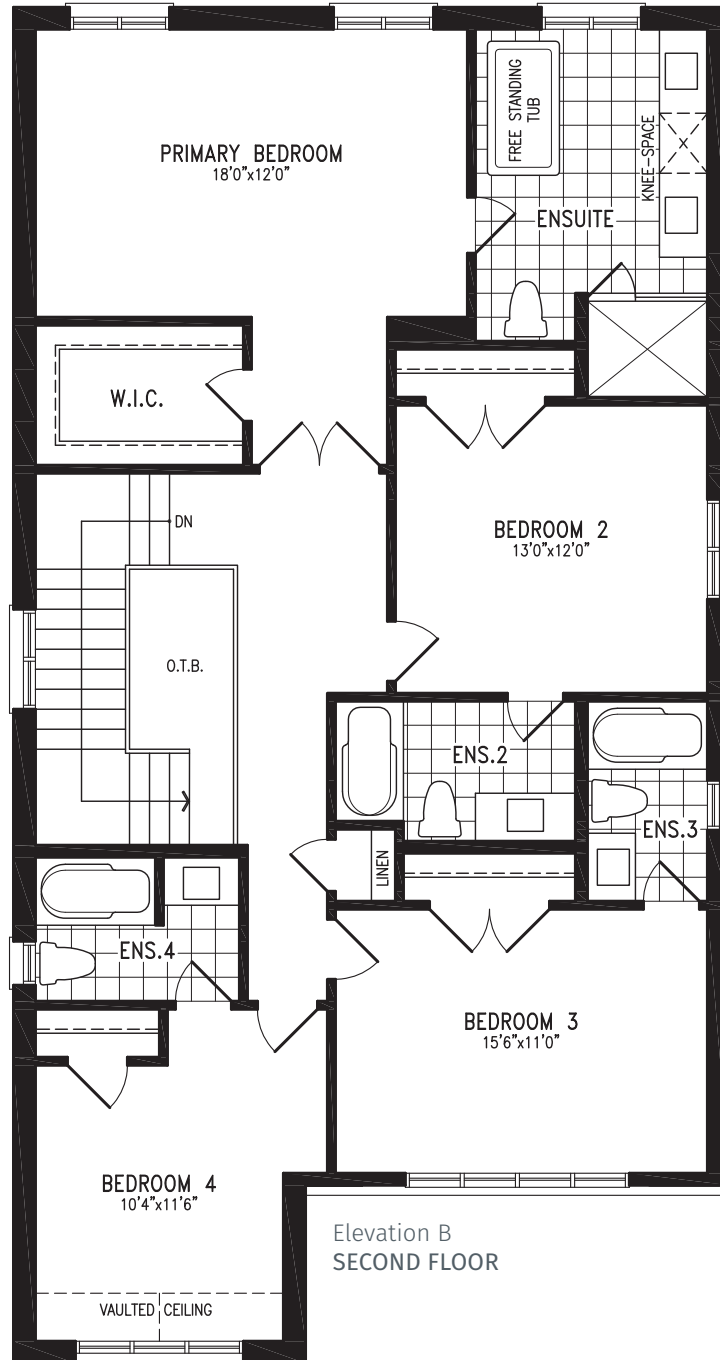
PIMLICO UC38-2 prices & specifications subject to change without notice. Useable square footage may vary from that stated herein. Artists concept only E. & O. E. © 2023 CountryWide Homes. All rights reserved.



# PIMLICO

Elevation B | 38' single

2,806 SQ.FT.



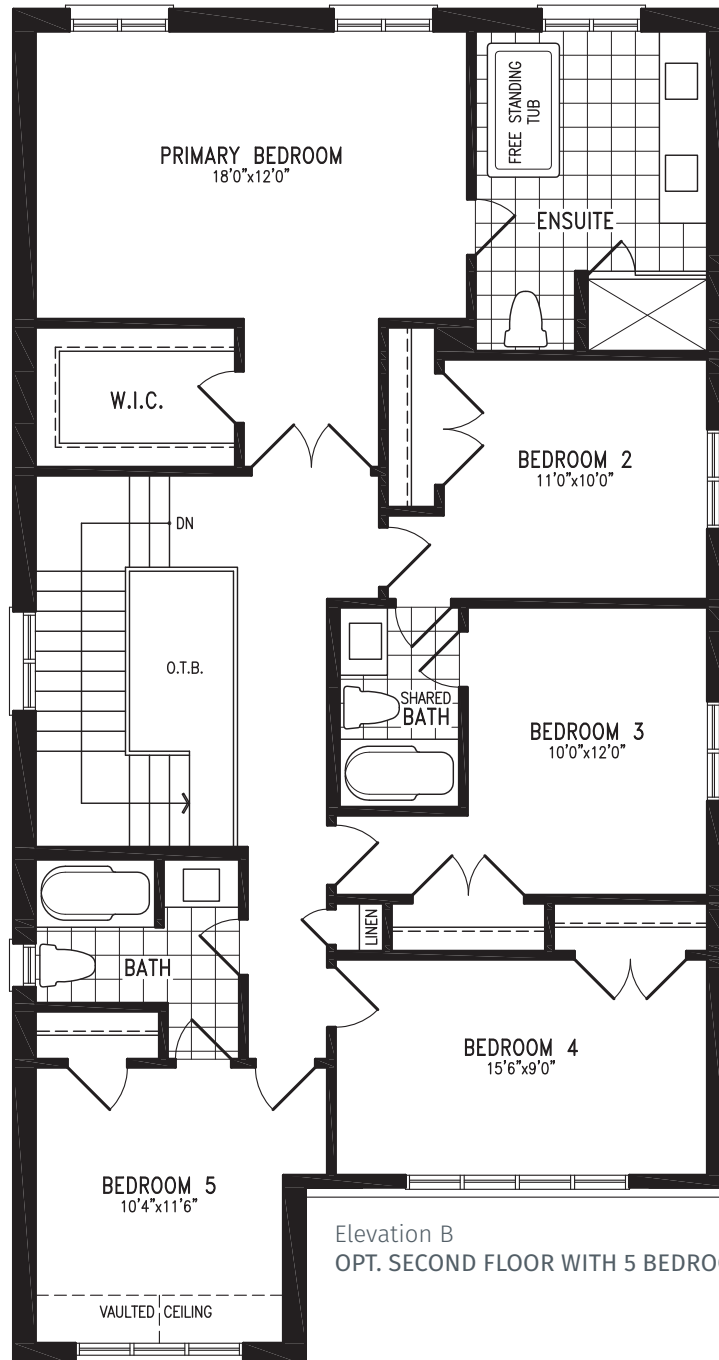
PIMLICO UC38-2 prices & specifications subject to change without notice. Useable square footage may vary from that stated herein. Artists concept only E. & O. E. © 2023 CountryWide Homes. All rights reserved.



# PIMLICO

Elevation B | 38' single

2,806 SQ.FT.



Elevation B  
OPT. SECOND FLOOR WITH 5 BEDROOM



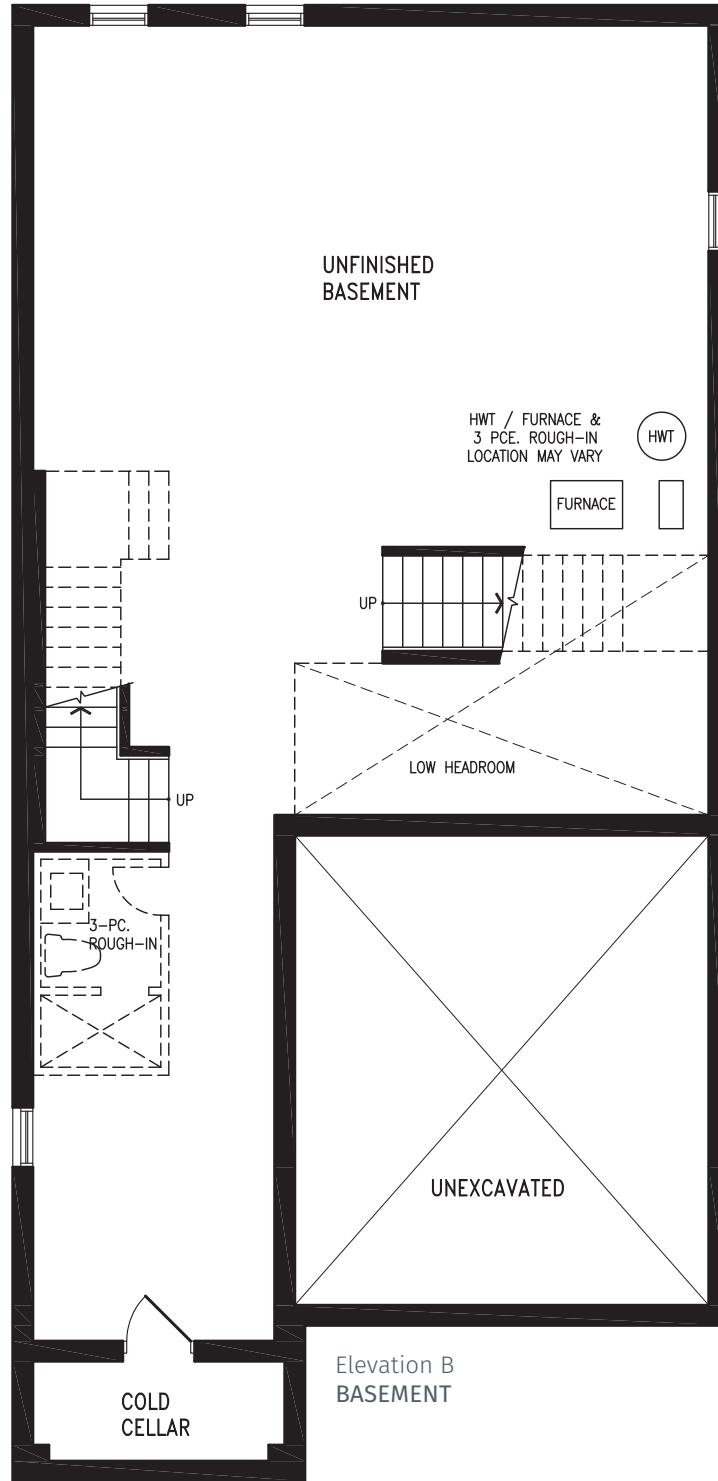
PIMLICO UC38-2 prices & specifications subject to change without notice. Useable square footage may vary from that stated herein. Artists concept only E. & O. E. © 2023 CountryWide Homes. All rights reserved.



# PIMLICO

Elevation B | 38' single

2,806 SQ.FT.



PIMLICO UC38-2 prices & specifications subject to change without notice. Useable square footage may vary from that stated herein. Artists concept only E. & O. E. © 2023 CountryWide Homes. All rights reserved.







# PIMLICO

Elevation C | 38' Single

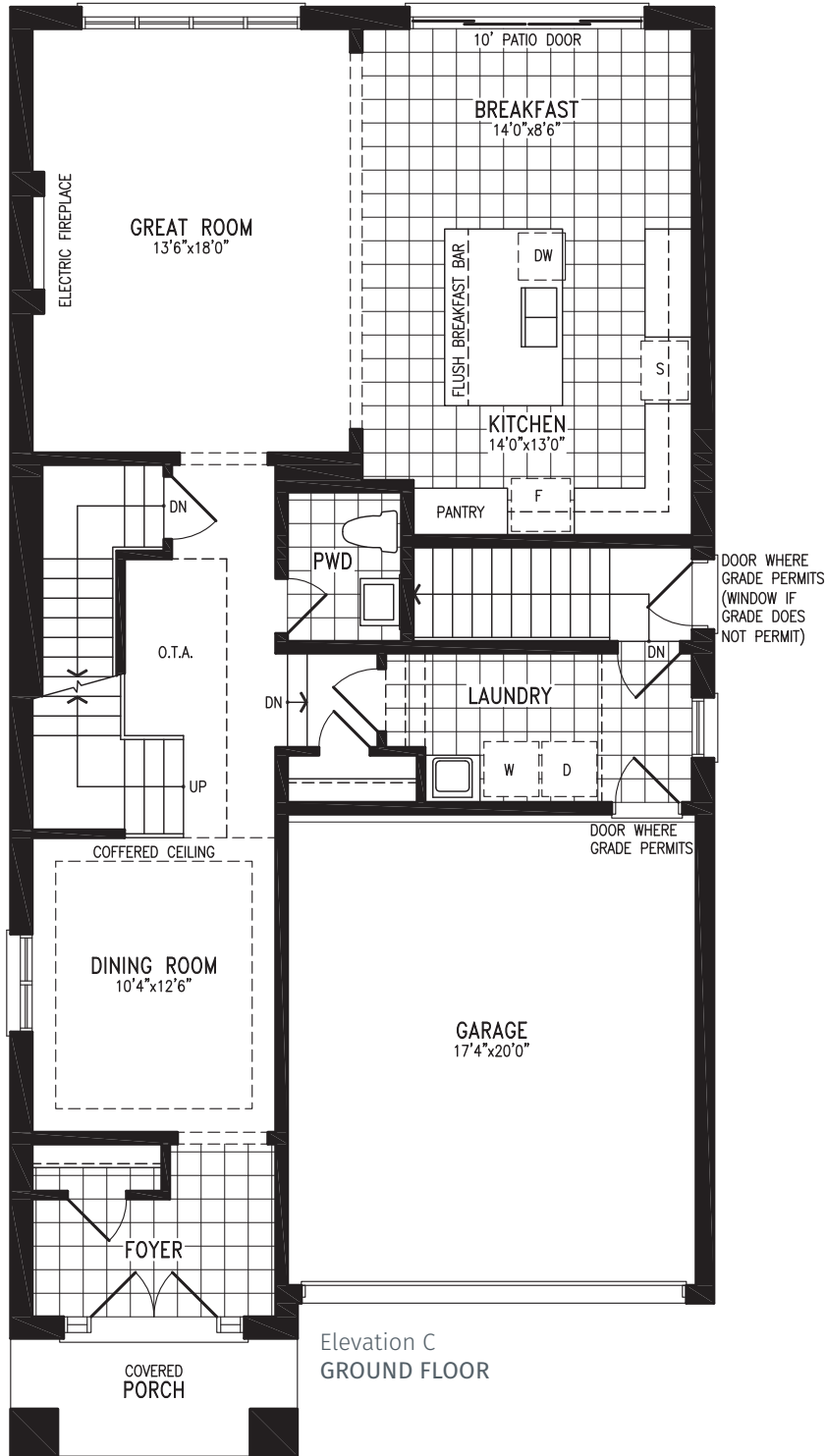




# PIMLICO

Elevation C | 38' single

2,818 SQ.FT.



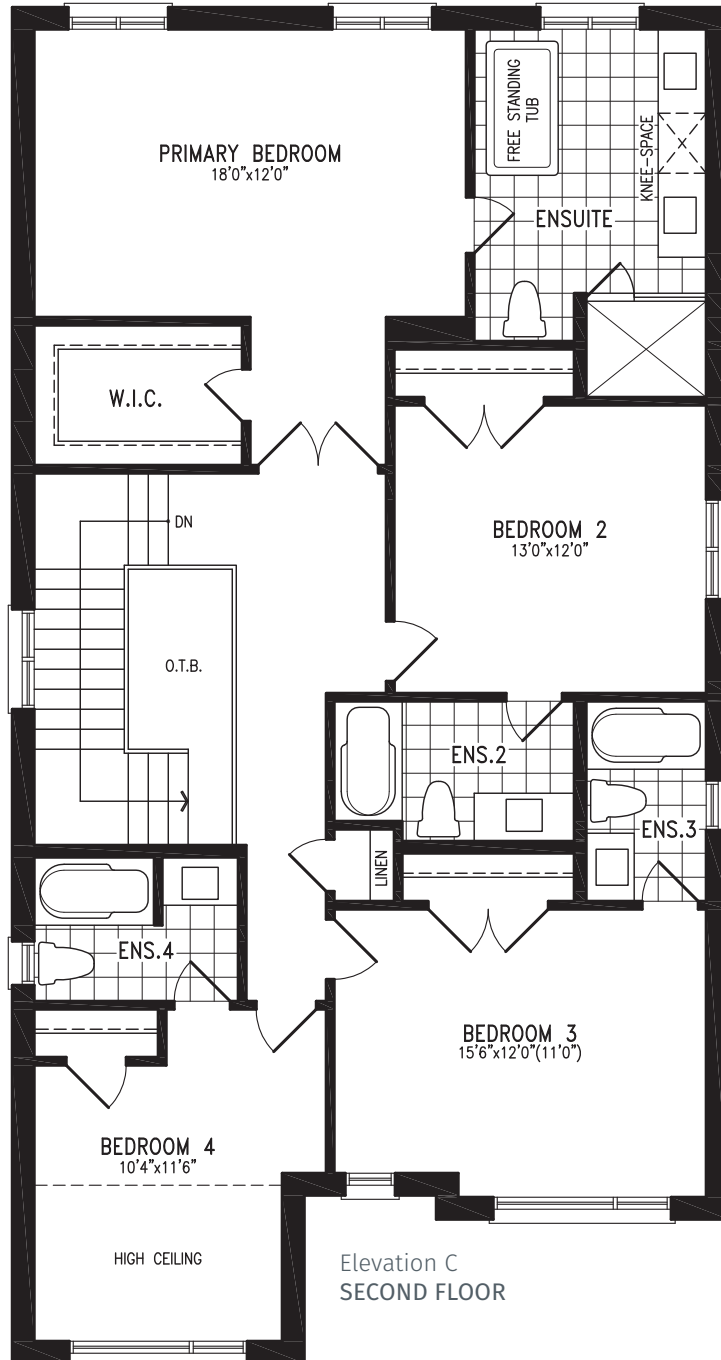
PIMLICO UC38-2 prices & specifications subject to change without notice. Useable square footage may vary from that stated herein. Artists concept only E. & O. E. © 2023 CountryWide Homes. All rights reserved.



# PIMLICO

Elevation C | 38' single

2,818 SQ.FT.



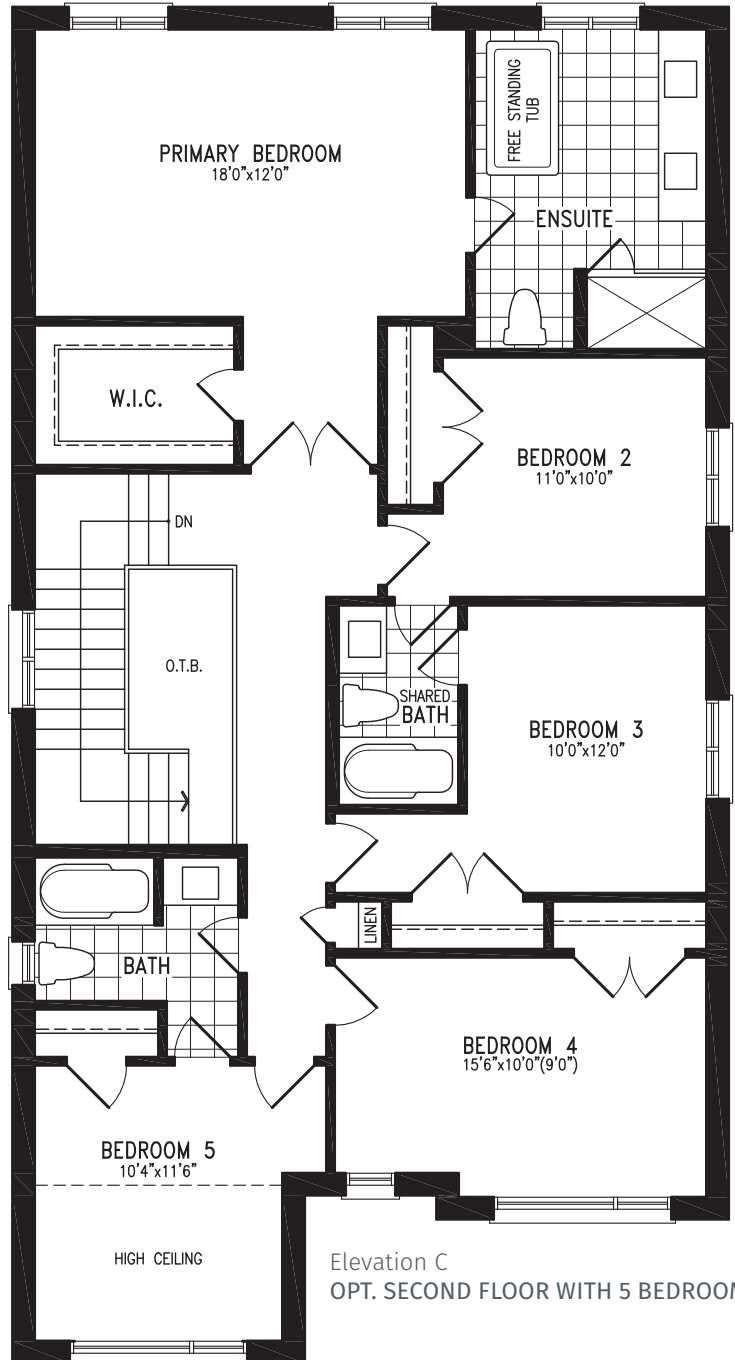
PIMLICO UC38-2 prices & specifications subject to change without notice. Useable square footage may vary from that stated herein. Artists concept only E. & O. E. © 2023 CountryWide Homes. All rights reserved.



# PIMLICO

Elevation C | 38' single

2,818 SQ.FT.



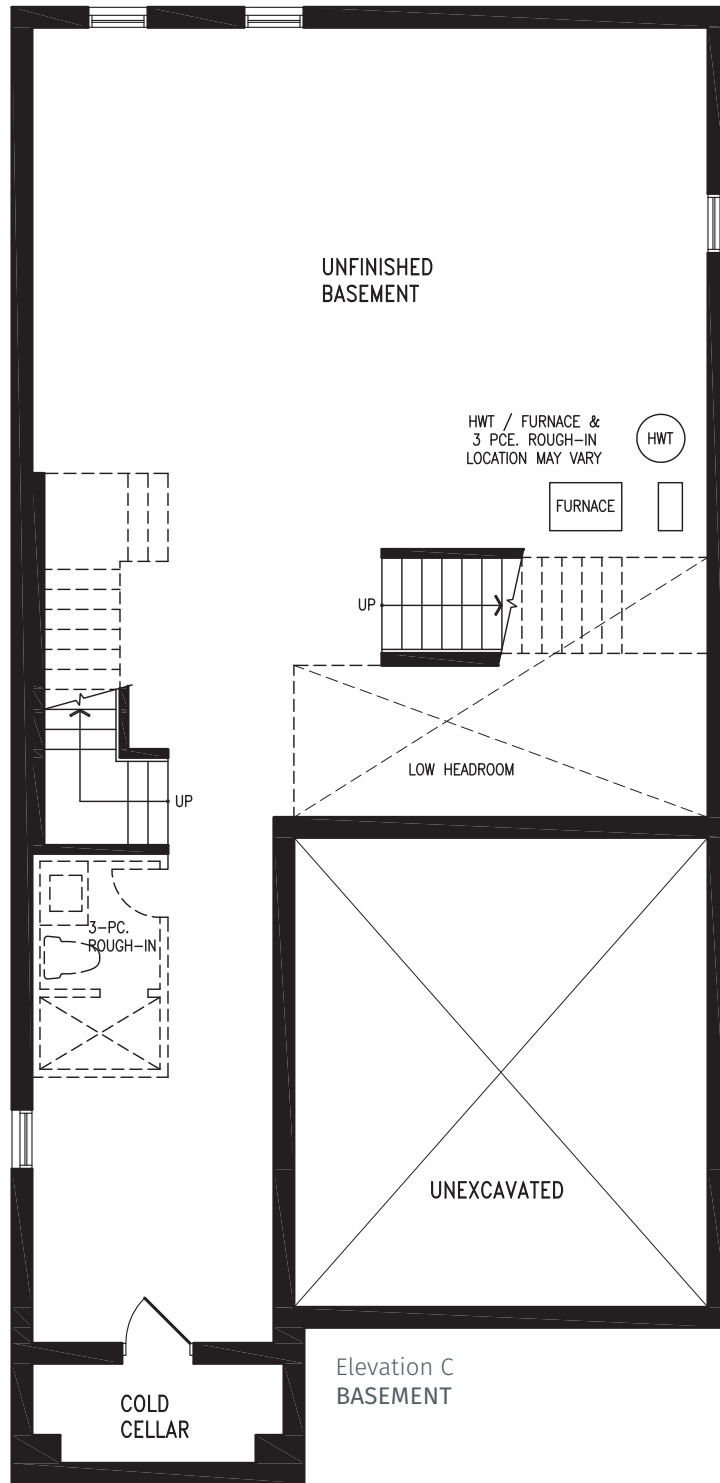
PIMLICO UC38-2 prices & specifications subject to change without notice. Useable square footage may vary from that stated herein. Artists concept only E. & O. E. © 2023 CountryWide Homes. All rights reserved.



# PIMLICO

Elevation C | 38' single

2,818 SQ.FT.



PIMLICO UC38-2 prices & specifications subject to change without notice. Useable square footage may vary from that stated herein. Artists concept only E. & O. E. © 2023 CountryWide Homes. All rights reserved.





# ASCOT CORNER

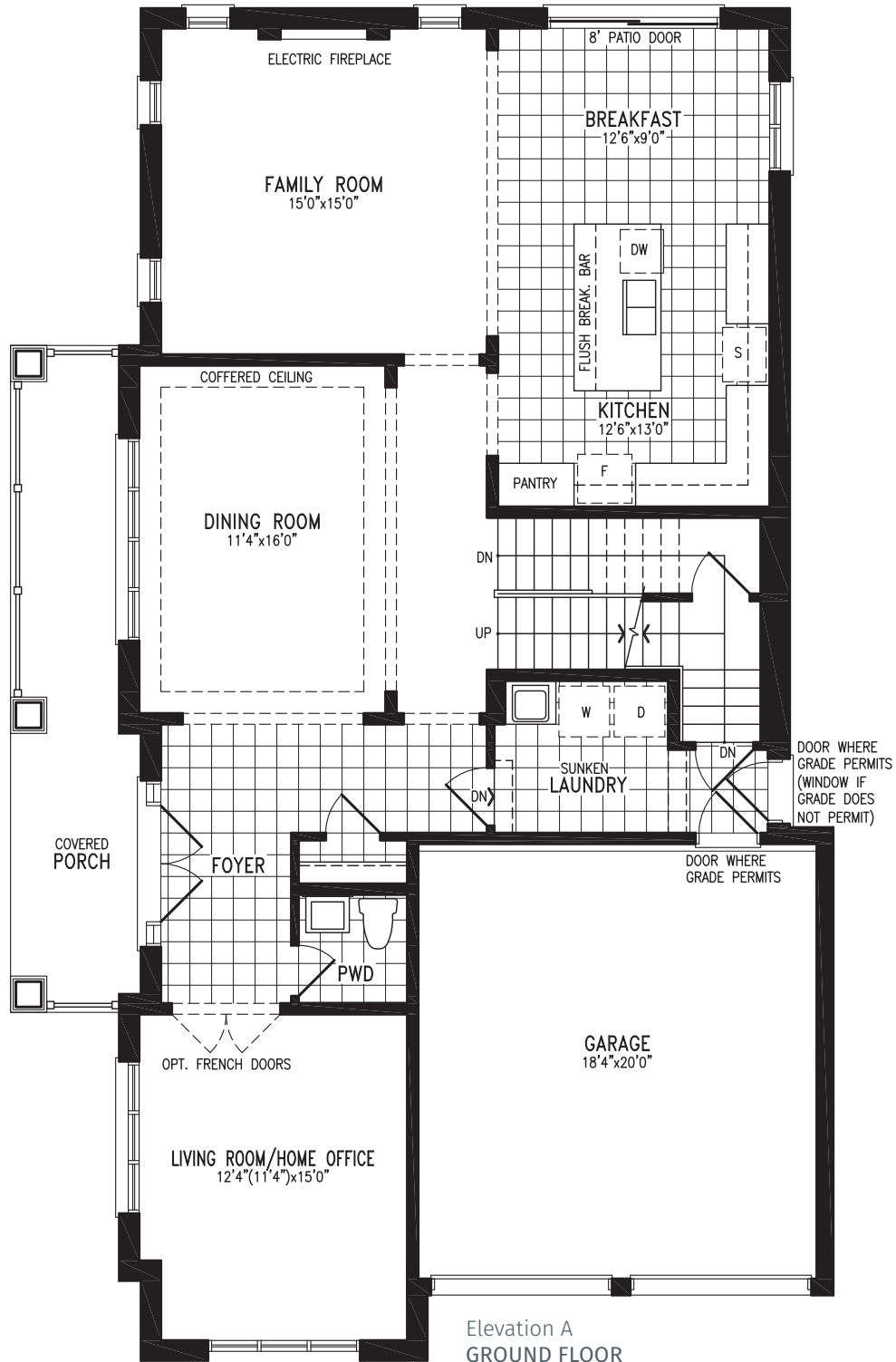
Elevation A | 38' Single



# ASCOT

Elevation A | 38' single

3,252 SQ.FT.



ASCOT UC38-3C prices & specifications subject to change without notice. Useable square footage may vary from that stated herein. Artists concept only E. & O. E. © 2023 CountryWide Homes. All rights reserved.

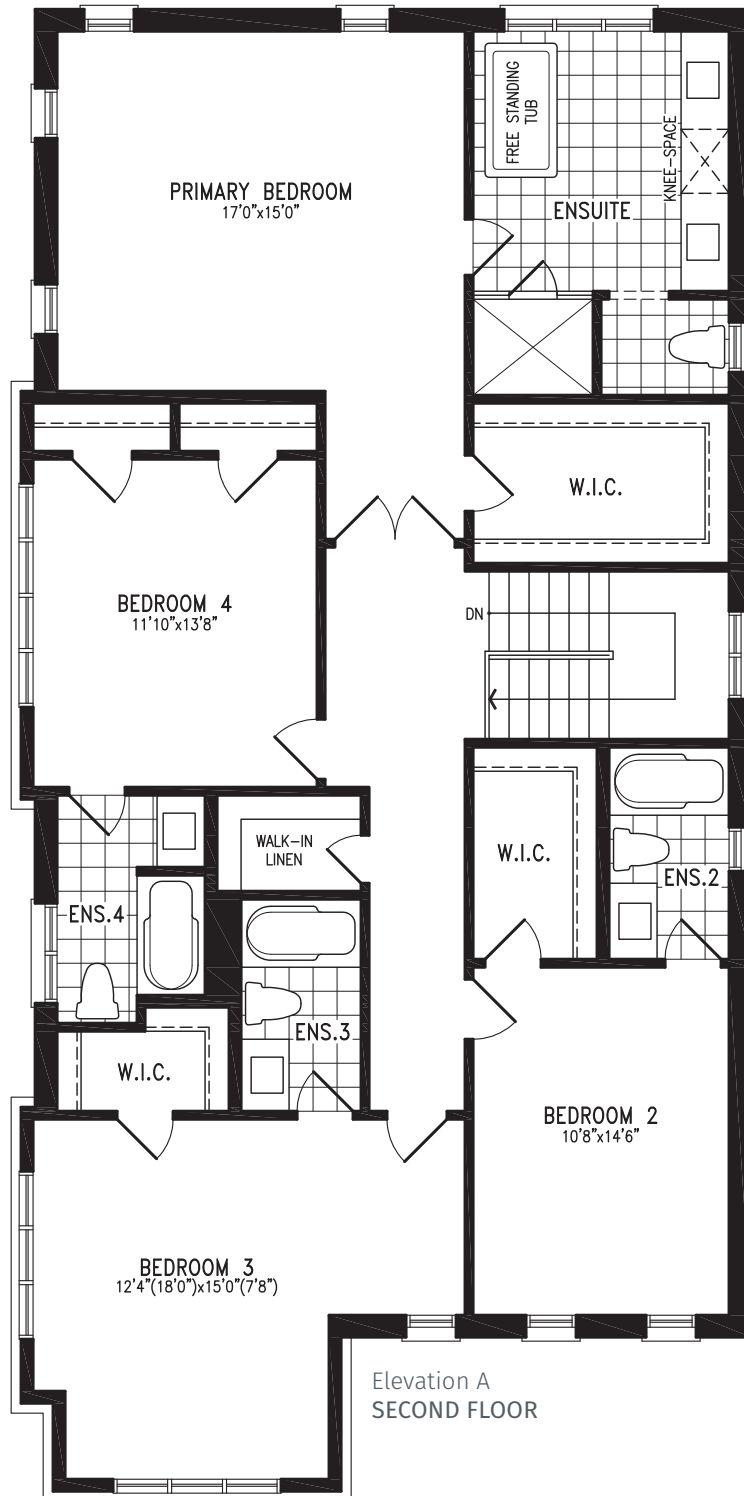




# ASCOT

Elevation A | 38' single

3,252 SQ.FT.



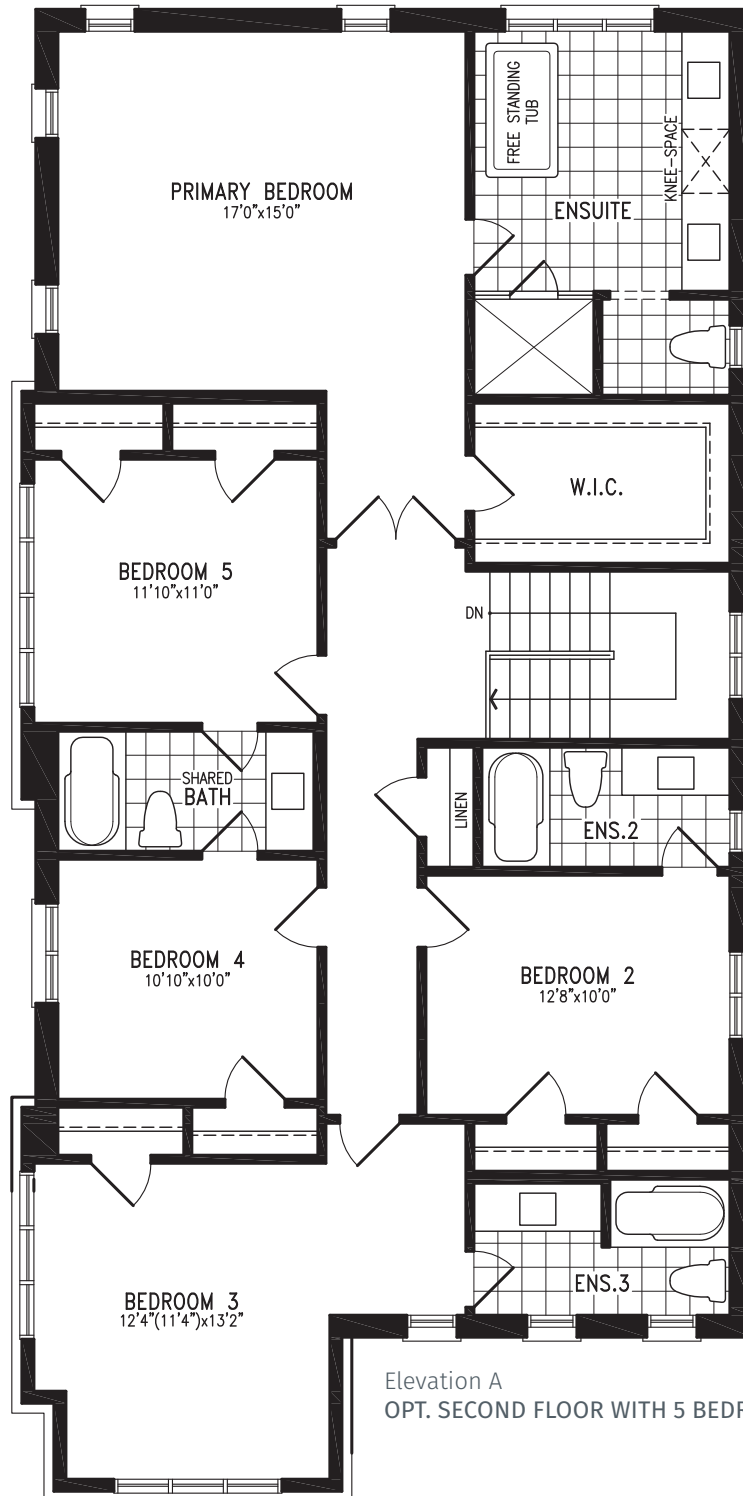
ASCOT UC38-3C prices & specifications subject to change without notice. Useable square footage may vary from that stated herein. Artists concept only E. & O. E. © 2023 CountryWide Homes. All rights reserved.



# ASCOT

Elevation A | 38' single

3,252 SQ.FT.



Elevation A  
OPT. SECOND FLOOR WITH 5 BEDROOM



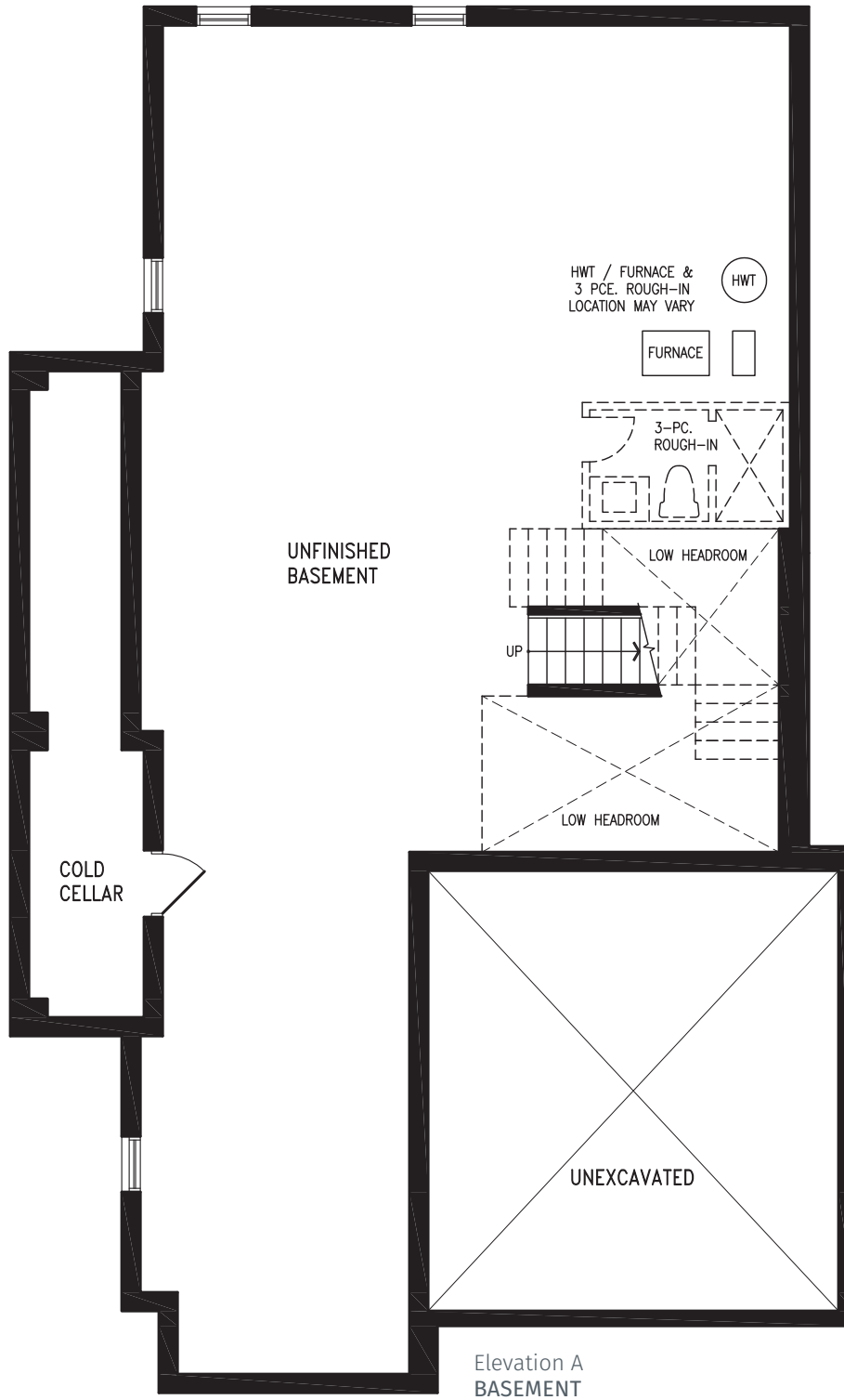
ASCOT UC38-3C prices & specifications subject to change without notice. Useable square footage may vary from that stated herein. Artists concept only E. & O. E. © 2023 CountryWide Homes. All rights reserved.



# ASCOT

Elevation A | 38' single

3,252 SQ.FT.



ASCOT UC38-3C prices & specifications subject to change without notice. Useable square footage may vary from that stated herein. Artists concept only E. & O. E. © 2023 CountryWide Homes. All rights reserved.





UPPER  
CALEDON  
EAST



# ASCOT CORNER

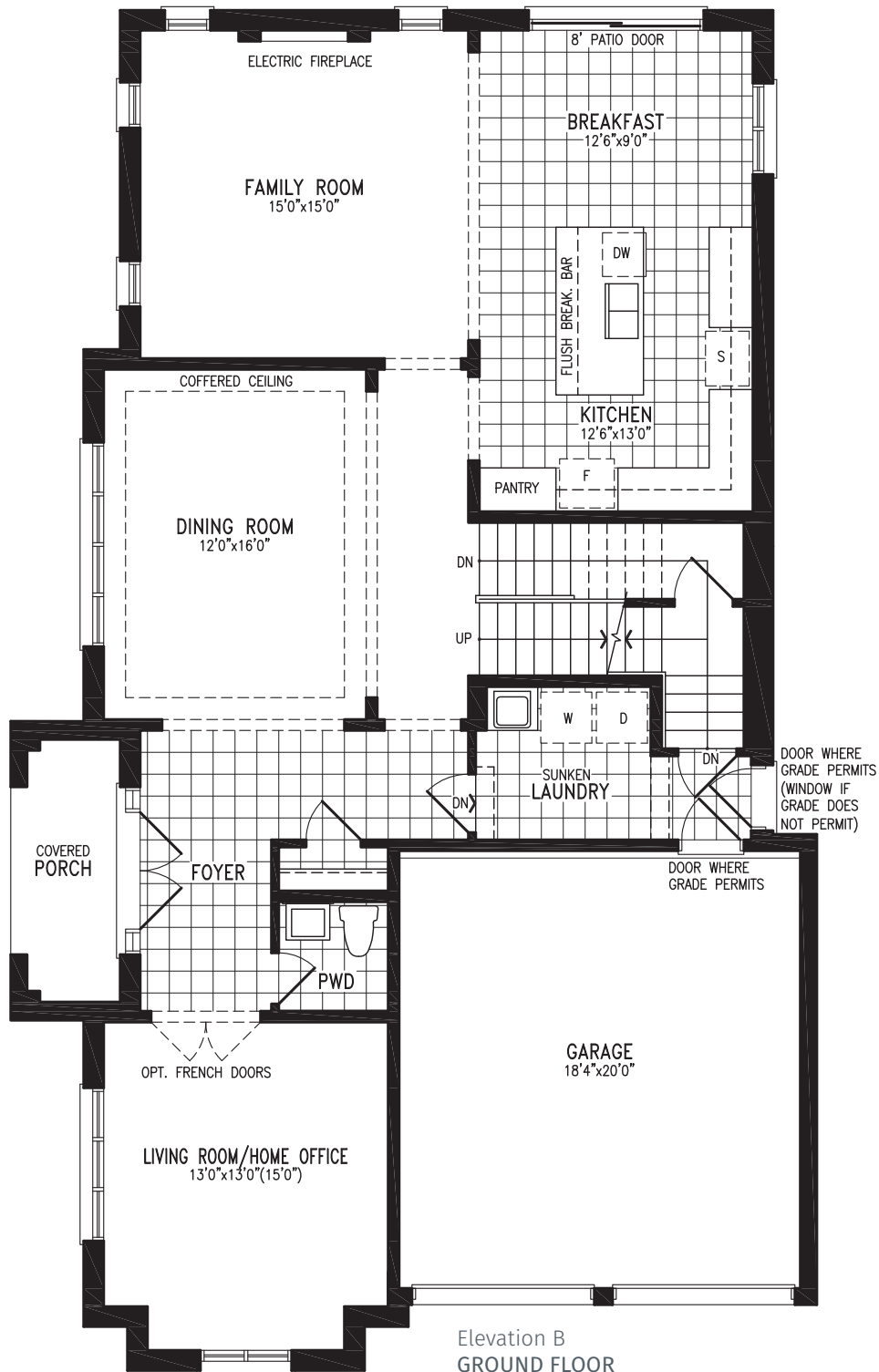
Elevation B | 38' Single



# ASCOT

Elevation B | 38' single

3,291 SQ.FT.



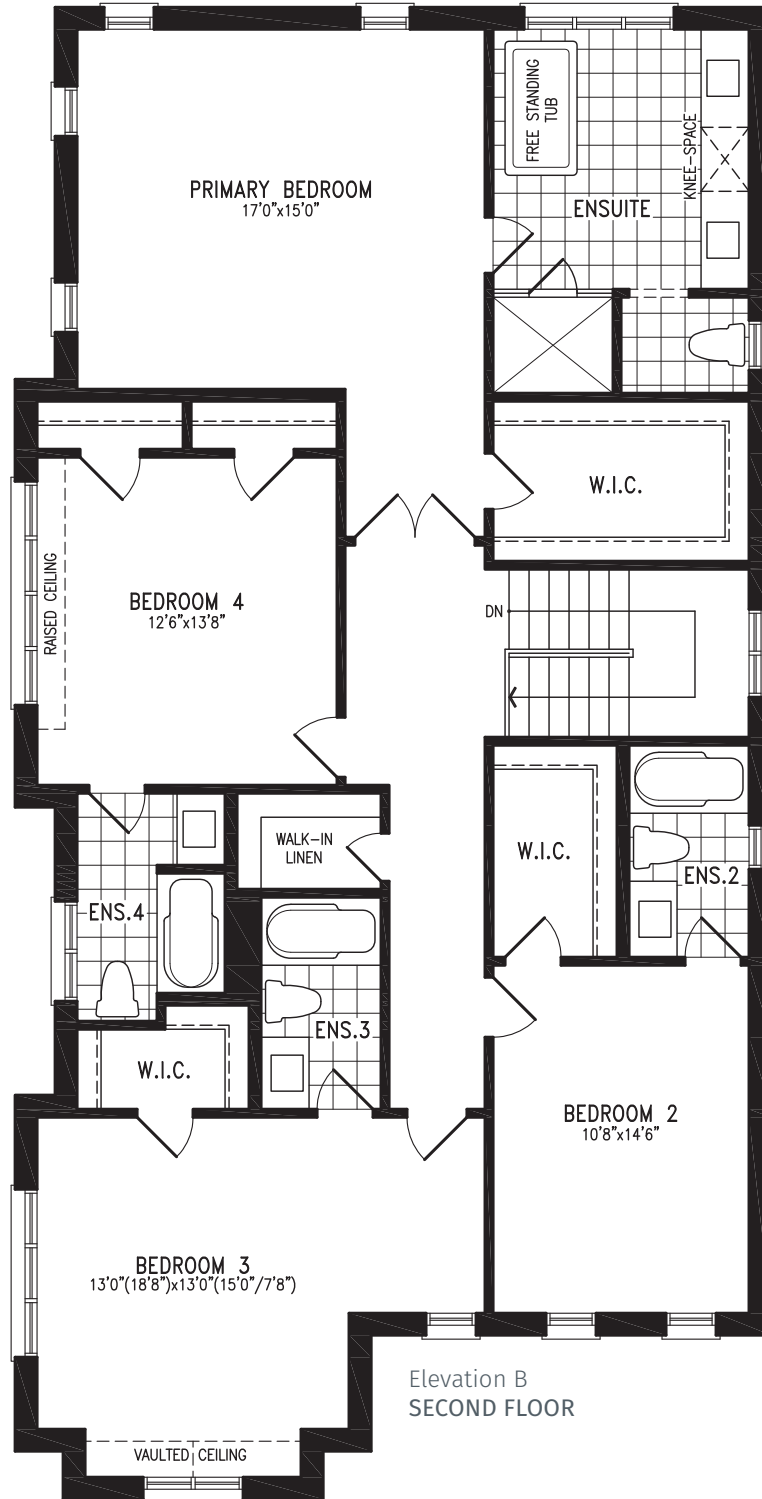
ASCOT UC38-3C prices & specifications subject to change without notice. Useable square footage may vary from that stated herein. Artists concept only E. & O. E. © 2023 CountryWide Homes. All rights reserved.



# ASCOT

Elevation B | 38' single

3,291 SQ.FT.



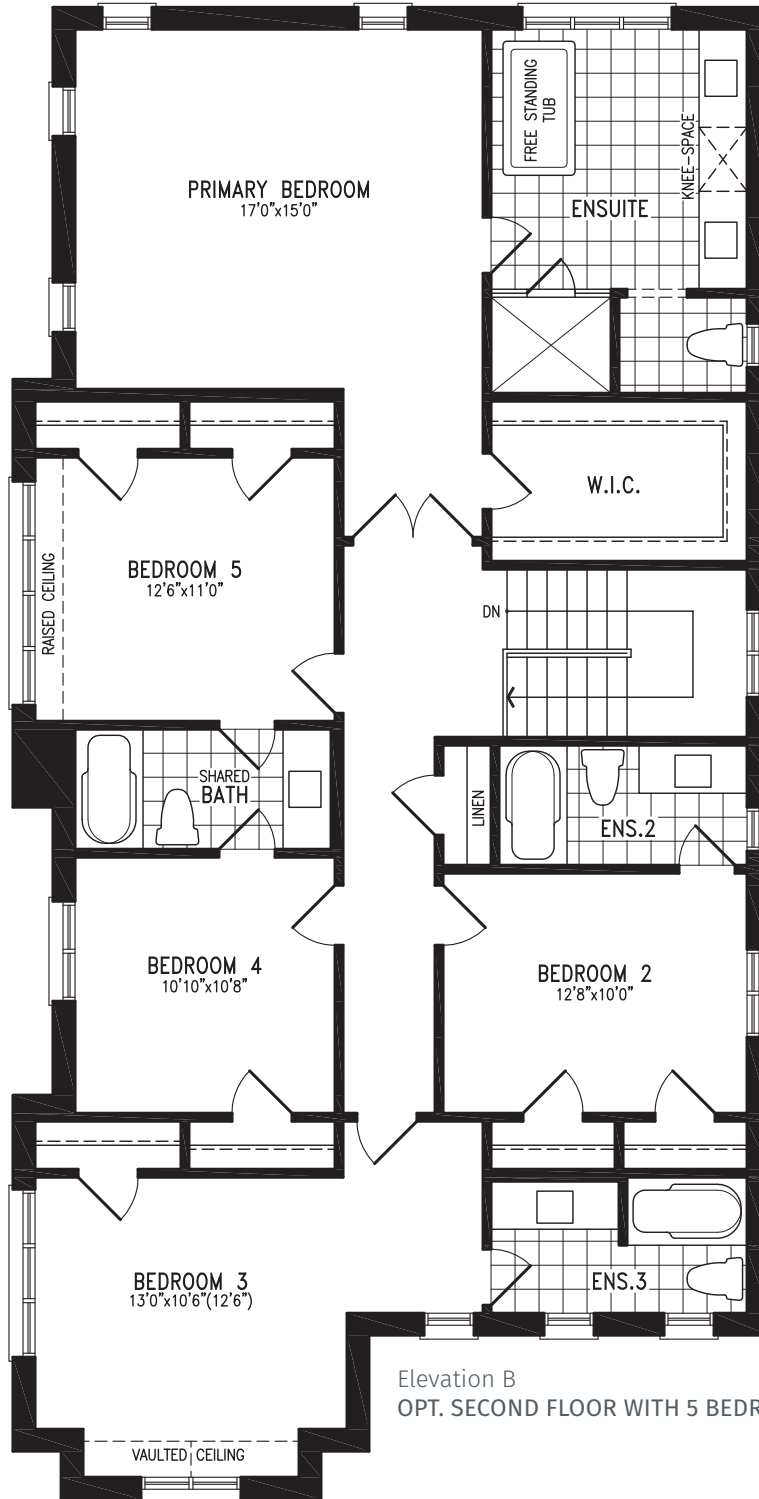
ASCOT UC38-3C prices & specifications subject to change without notice. Useable square footage may vary from that stated herein. Artists concept only E. & O. E. © 2023 CountryWide Homes. All rights reserved.



# ASCOT

Elevation B | 38' single

3,291 SQ.FT.



Elevation B  
OPT. SECOND FLOOR WITH 5 BEDROOM



ASCOT UC38-3C prices & specifications subject to change without notice. Useable square footage may vary from that stated herein. Artists concept only E. & O. E. © 2023 CountryWide Homes. All rights reserved.

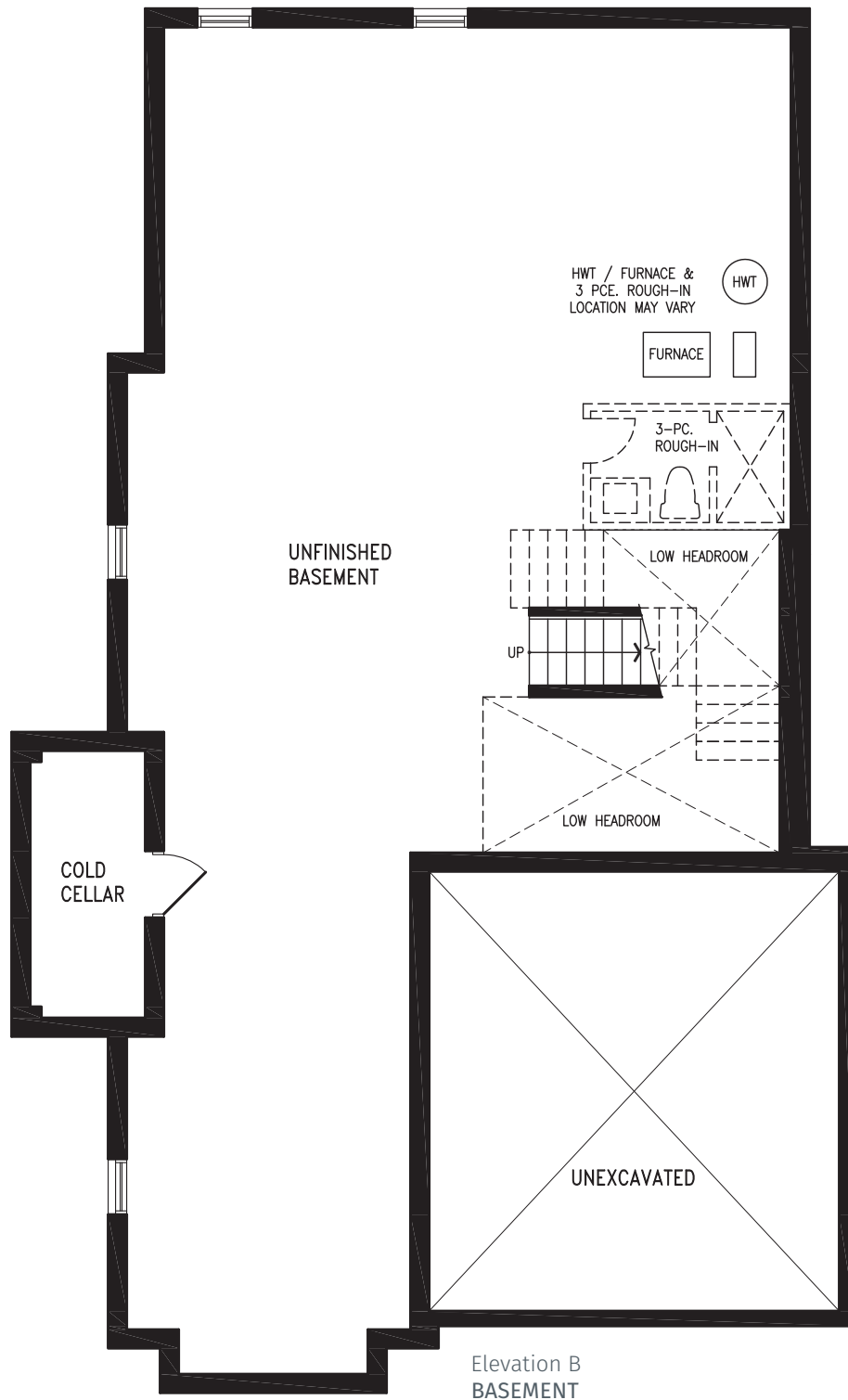




# ASCOT

Elevation B | 38' single

3,291 SQ.FT.



Elevation B  
BASEMENT



ASCOT UC38-3C prices & specifications subject to change without notice. Useable square footage may vary from that stated herein. Artists concept only E. & O. E. © 2023 CountryWide Homes. All rights reserved.





# ASCOT CORNER

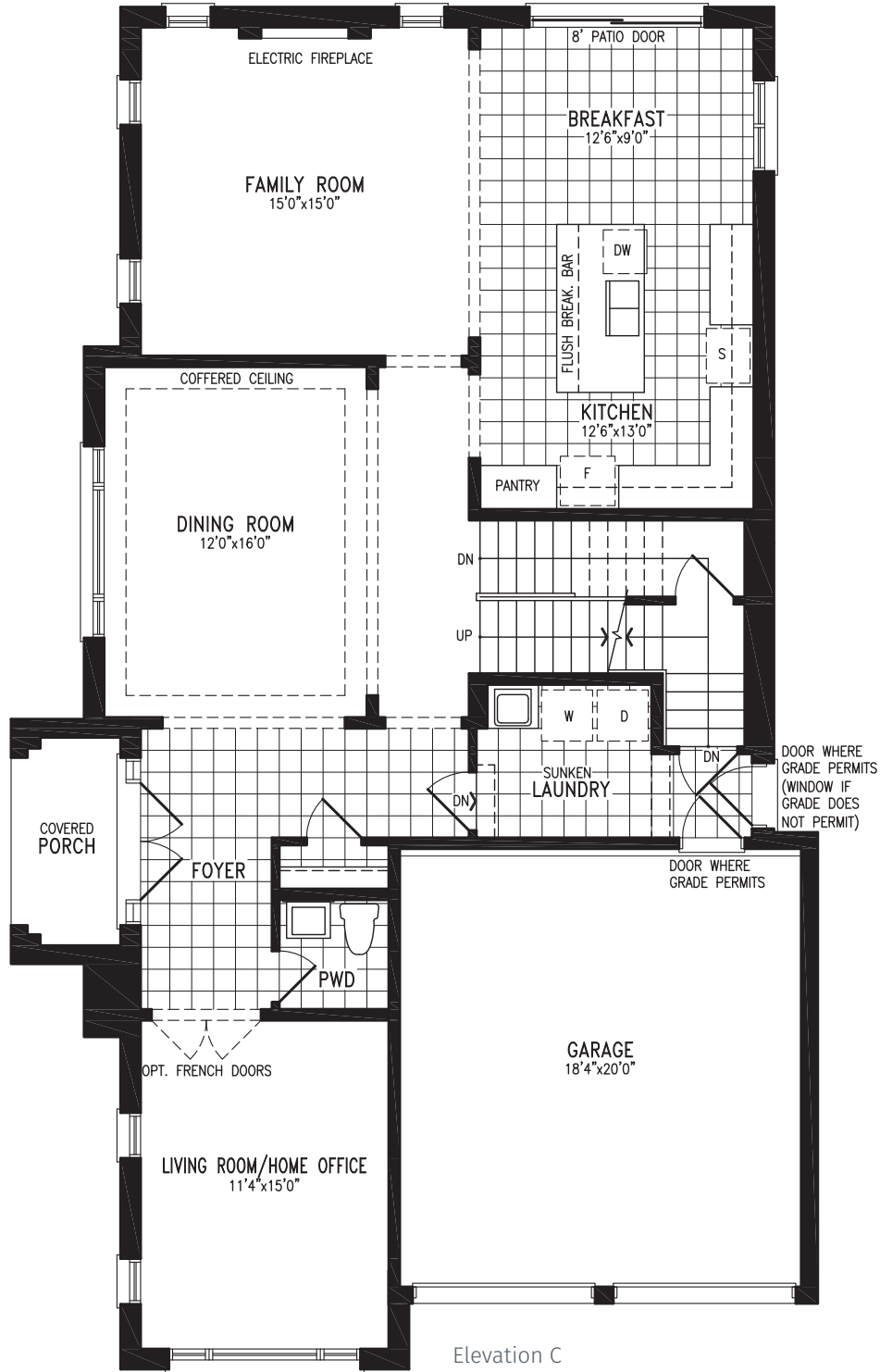
Elevation C | 38' Single



# ASCOT

Elevation C | 38' single

3,286 SQ.FT.



Elevation C  
GROUND FLOOR



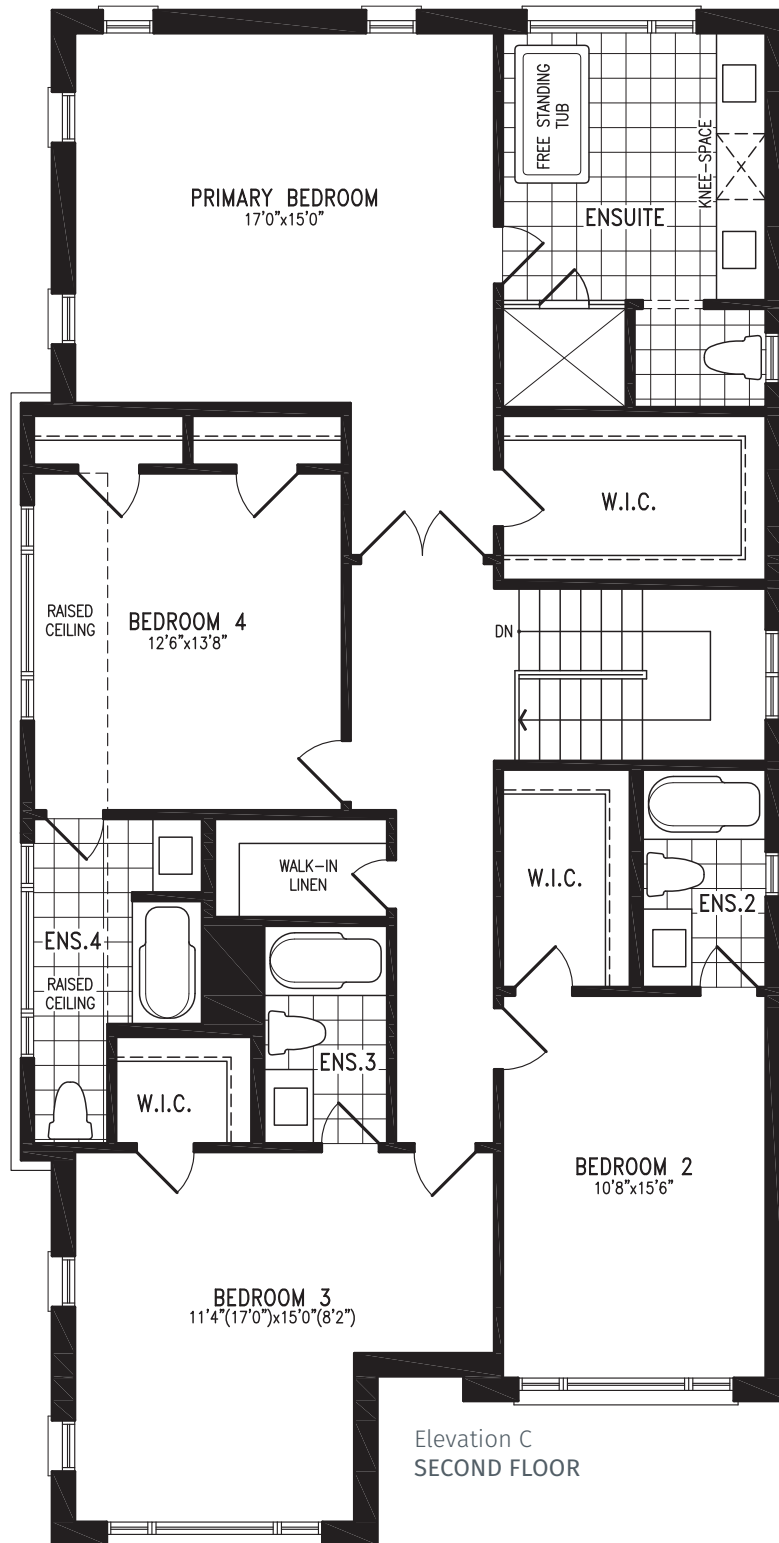
ASCOT UC38-3C prices & specifications subject to change without notice. Useable square footage may vary from that stated herein. Artists concept only E. & O. E. © 2023 CountryWide Homes. All rights reserved.



# ASCOT

Elevation C | 38' single

3,286 SQ.FT.



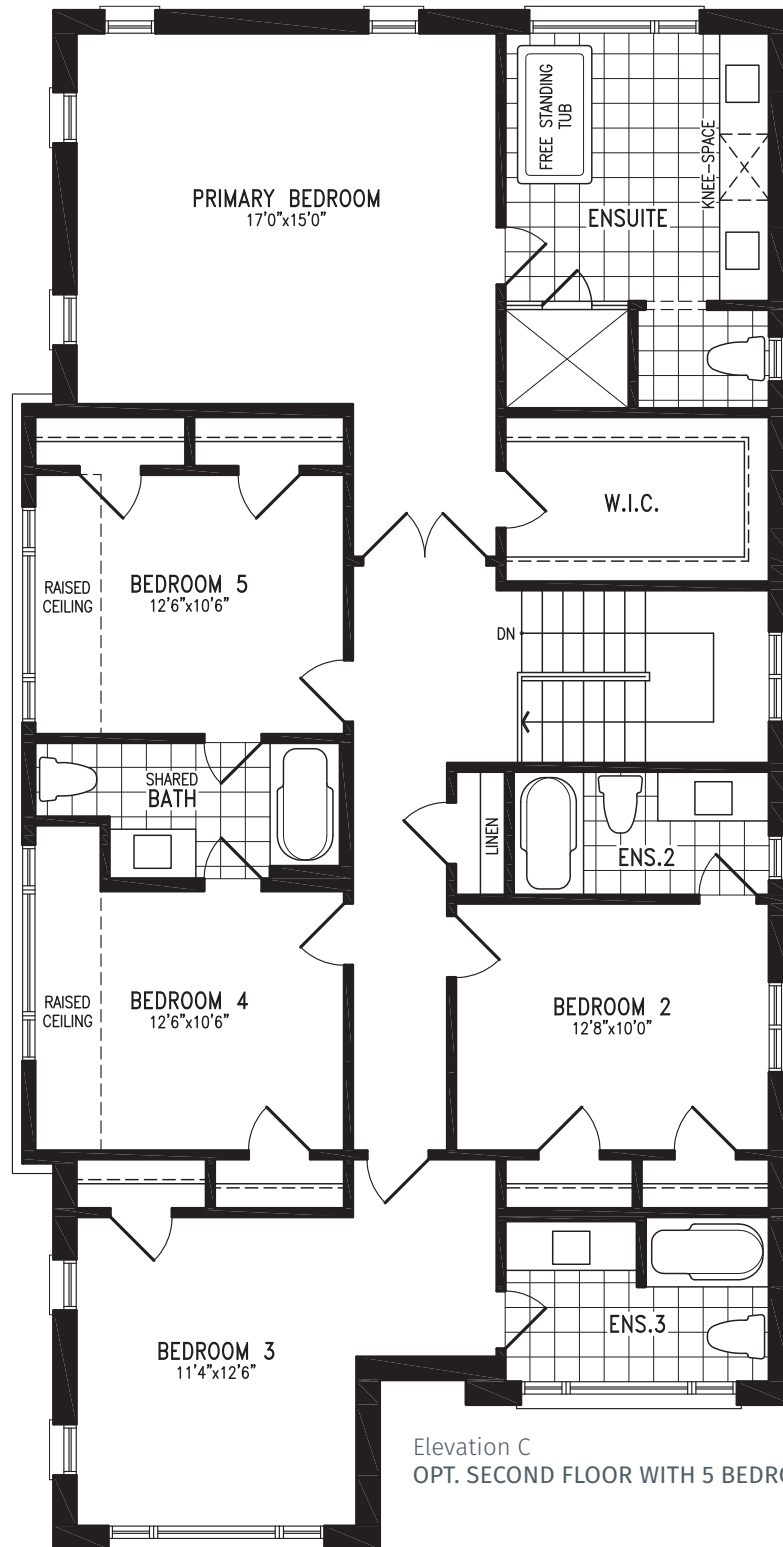
ASCOT UC38-3C prices & specifications subject to change without notice. Useable square footage may vary from that stated herein. Artists concept only E. & O. E. © 2023 CountryWide Homes. All rights reserved.



# ASCOT

Elevation C | 38' single

3,286 SQ.FT.



Elevation C  
OPT. SECOND FLOOR WITH 5 BEDROOM



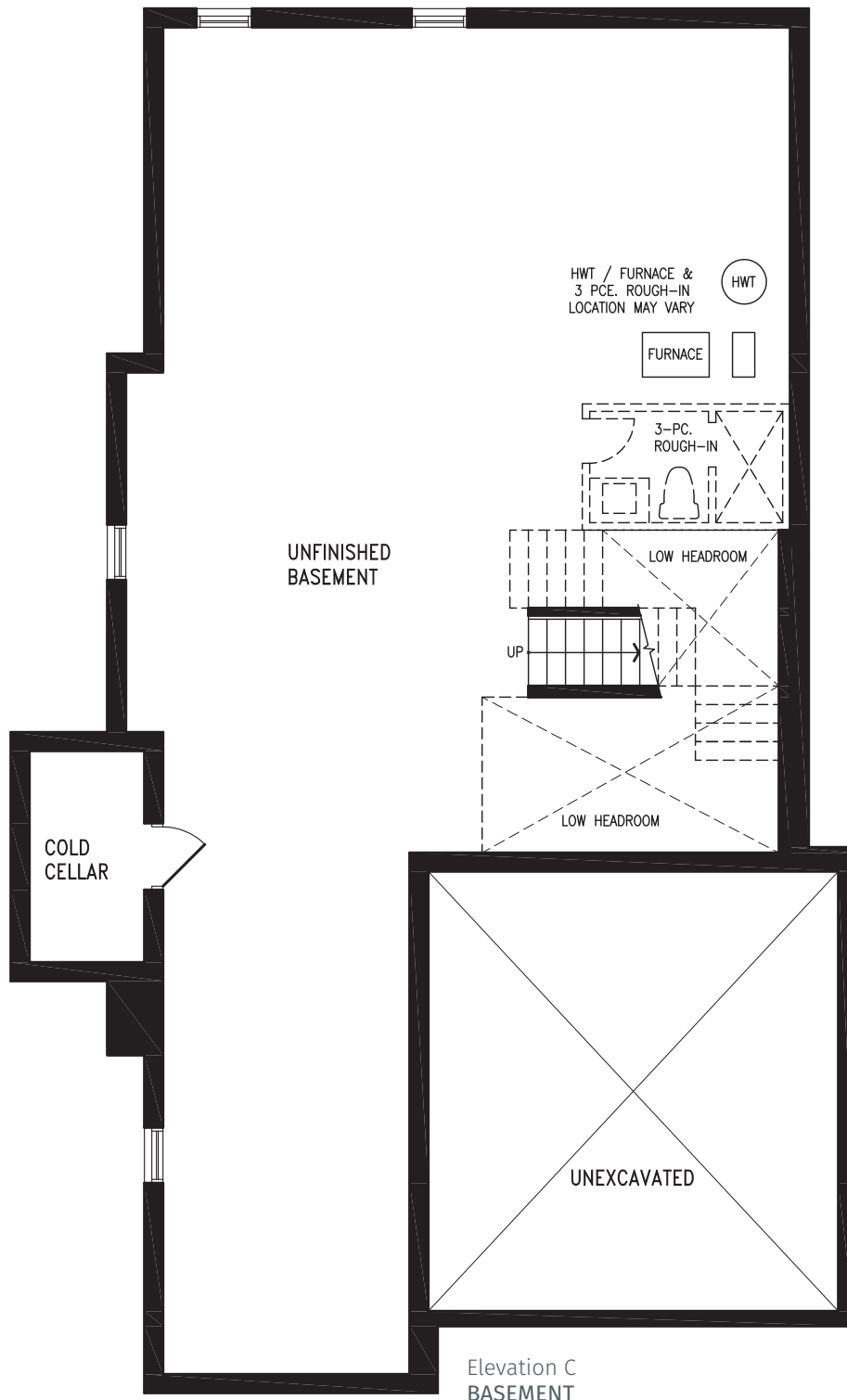
ASCOT UC38-3C prices & specifications subject to change without notice. Useable square footage may vary from that stated herein. Artists concept only E. & O. E. © 2023 CountryWide Homes. All rights reserved.



# ASCOT

Elevation C | 38' single

3,286 SQ.FT.



Elevation C  
BASEMENT



ASCOT UC38-3C prices & specifications subject to change without notice. Useable square footage may vary from that stated herein. Artists concept only E. & O. E. © 2023 CountryWide Homes. All rights reserved.

