

BROOKIN

TOWNS

- 🏠 1,944 SQ.FT.
- 🛏️ 3 beds
- 🚿 2 baths
- 🚻 2 powder
- 🚗 1 garage

INTERIOR UNIT



CITY TOWN

C-1944



TRADITIONAL TOWNS 2 STOREY TOWNS BLOCKS: 1 AND 2

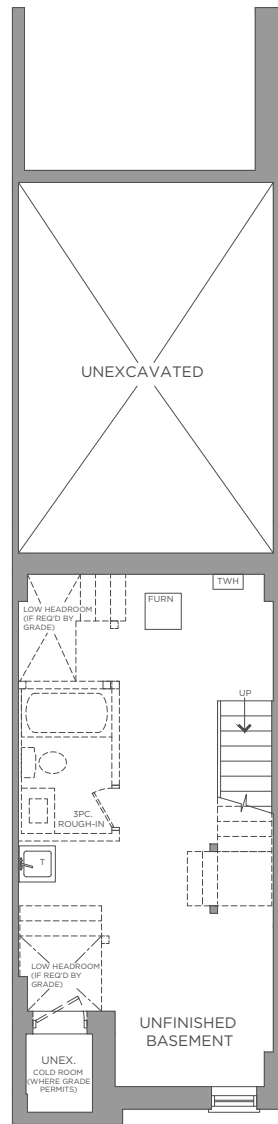
- T-1697
1697 SQ.FT.
- T-1715
1715 SQ.FT.
- T-1729
1729 SQ.FT.

STREET TOWNS 3 STOREY TOWNS BLOCKS: 3, 4, 5

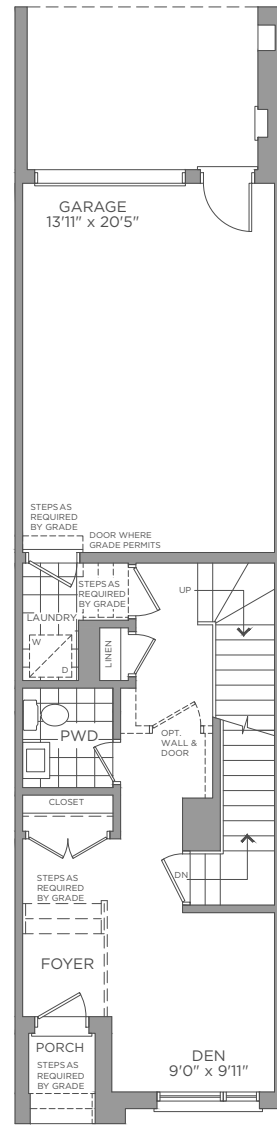
- S-1951
1951 SQ.FT.
- S-2010
2010 SQ.FT.
- S-2147
2147 SQ.FT.
- S-2182
2182 SQ.FT.
- S-2467
2467 SQ.FT.

CITY TOWNS 3 STOREY TOWNS BLOCKS: 6, 7, 8, 9, 10

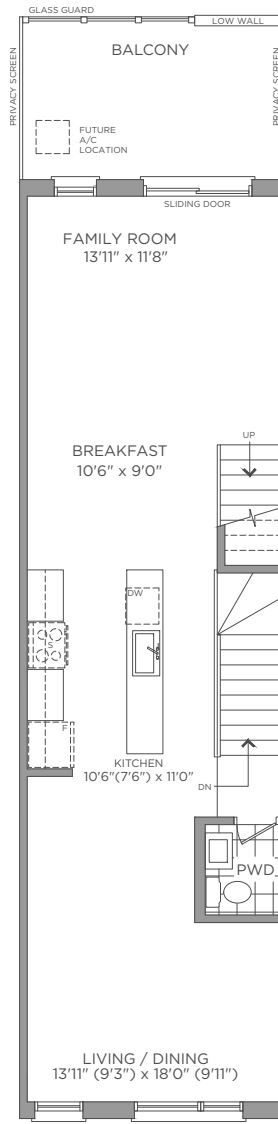
- C-1944
1944 SQ.FT.
- C-1952
1952 SQ.FT.
- C-1958
1958 SQ.FT.
- C-2030
2030 SQ.FT.
- C-2063
2063 SQ.FT.
- C-2300
2300 SQ.FT.



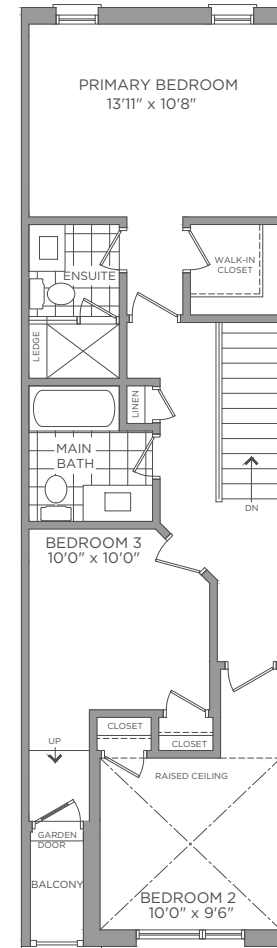
BASEMENT
ELEVATION A / B



FIRST FLOOR
ELEVATION A / B



SECOND FLOOR
ELEVATION A / B



THIRD FLOOR
ELEVATION A



BROOKIN

TOWNS




-  1,952 SQ.FT.
-  3 beds
(OPTIONAL 4 BEDS)
-  2 baths
(OPTIONAL 3 BATHS)
-  2 powder
-  1 garage

INTERIOR UNIT


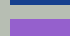



CITY TOWN
C-1952









TRADITIONAL TOWNS 2 STOREY TOWNS BLOCKS: 1 AND 2

-  T-1697
1697 SQ.FT.
-  T-1715
1715 SQ.FT.
-  T-1729
1729 SQ.FT.

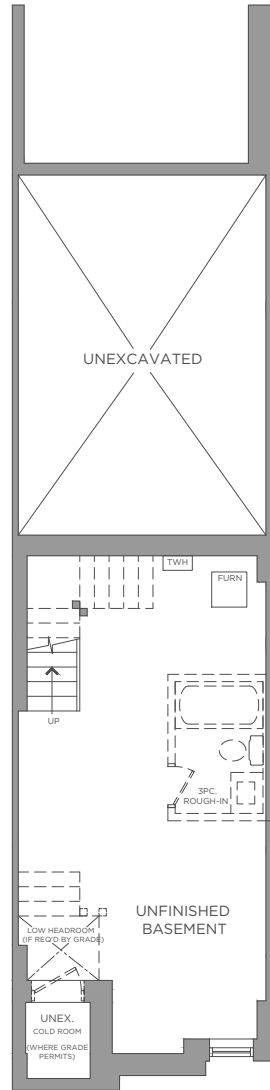
STREET TOWNS 3 STOREY TOWNS BLOCKS: 3, 4, 5

-  S-1951
1951 SQ.FT.
-  S-2010
2010 SQ.FT.
-  S-2147
2147 SQ.FT.
-  S-2182
2182 SQ.FT.
-  S-2467
2467 SQ.FT.

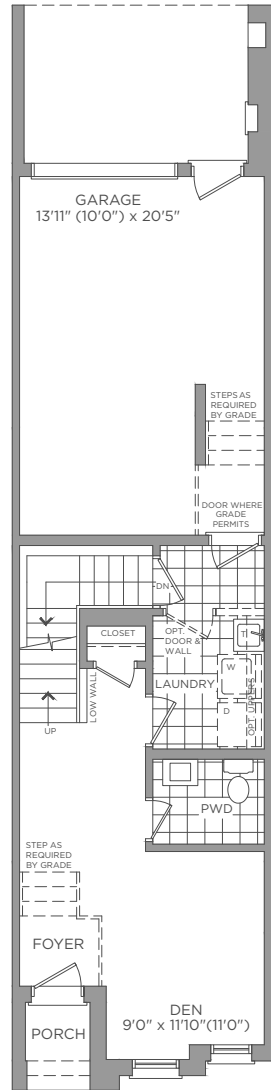
CITY TOWNS 3 STOREY TOWNS BLOCKS: 6, 7, 8, 9, 10

-  C-1944
1944 SQ.FT.
-  C-1952
1952 SQ.FT.
-  C-1958
1958 SQ.FT.
-  C-2030
2030 SQ.FT.
-  C-2063
2063 SQ.FT.
-  C-2300
2300 SQ.FT.

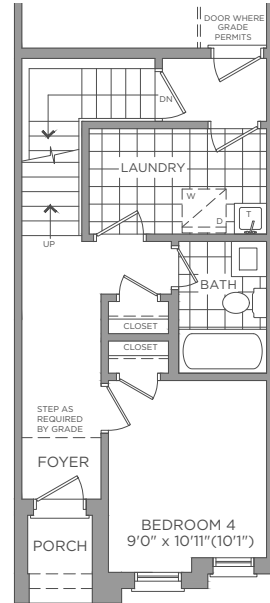




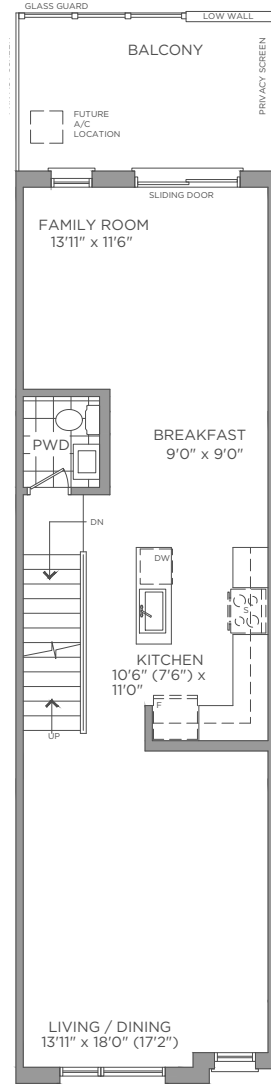
BASEMENT ELEVATION A



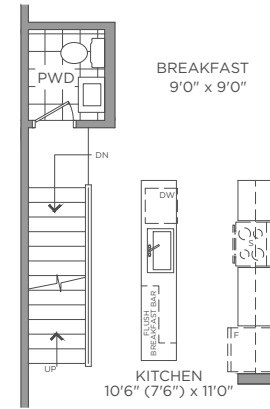
FIRST FLOOR ELEVATION A



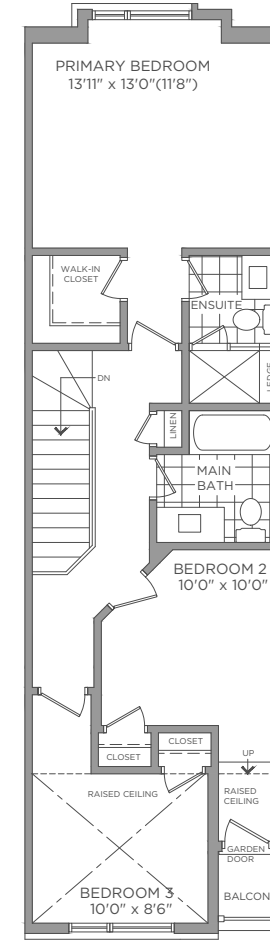
OPT. FIRST FLOOR



SECOND FLOOR ELEVATION A



OPT. SECOND FLOOR



THIRD FLOOR ELEVATION A



BROOKIN

TOWNS

- 🏠 1,958 SQ.FT.
- 🛏 3 beds
(OPTIONAL 4 BEDS)
- 🚿 2 baths
(OPTIONAL 3 BATHS)
- 🚰 2 powder
- 🚗 1 garage

INTERIOR UNIT

CITY TOWN
C-1958



TRADITIONAL TOWNS 2 STOREY TOWNS BLOCKS: 1 AND 2

- T-1697
1697 SQ.FT.
- T-1715
1715 SQ.FT.
- T-1729
1729 SQ.FT.

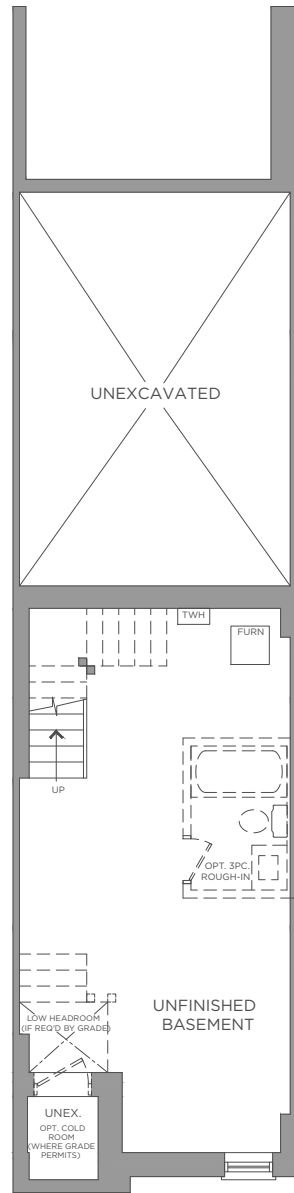
STREET TOWNS 3 STOREY TOWNS BLOCKS: 3, 4, 5

- S-1951
1951 SQ.FT.
- S-2010
2010 SQ.FT.
- S-2147
2147 SQ.FT.
- S-2182
2182 SQ.FT.
- S-2467
2467 SQ.FT.

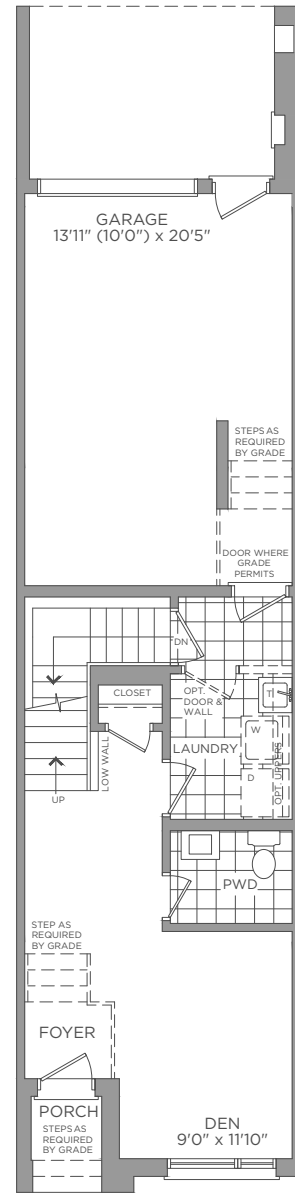
CITY TOWNS 3 STOREY TOWNS BLOCKS: 6, 7, 8, 9, 10

- C-1944
1944 SQ.FT.
- C-1952
1952 SQ.FT.
- C-1958
1958 SQ.FT.
- C-2030
2030 SQ.FT.
- C-2063
2063 SQ.FT.
- C-2300
2300 SQ.FT.

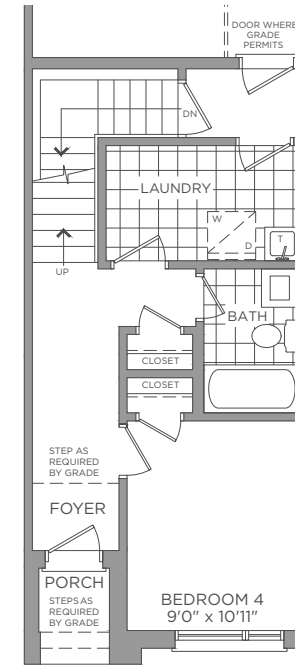




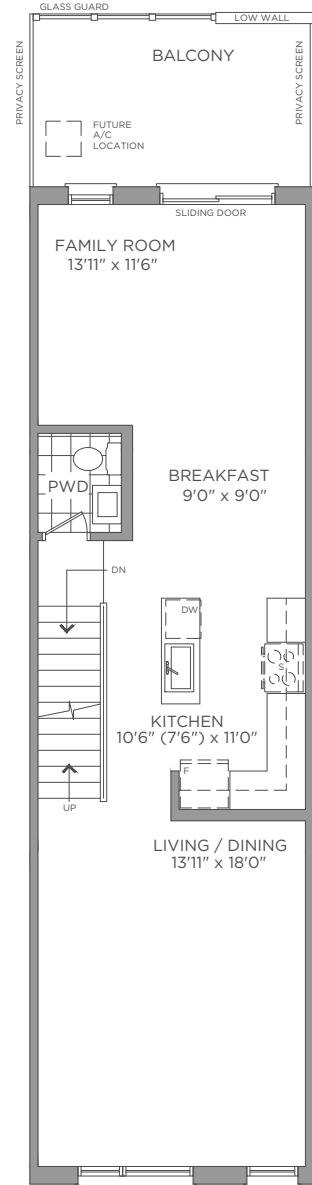
BASEMENT ELEVATION A / B



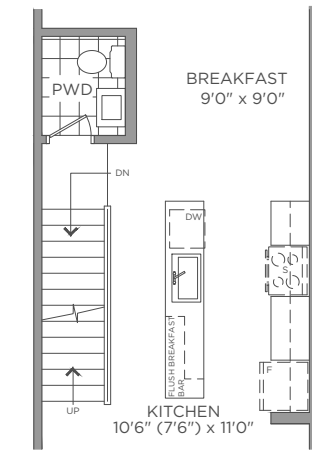
FIRST FLOOR ELEVATION A / B



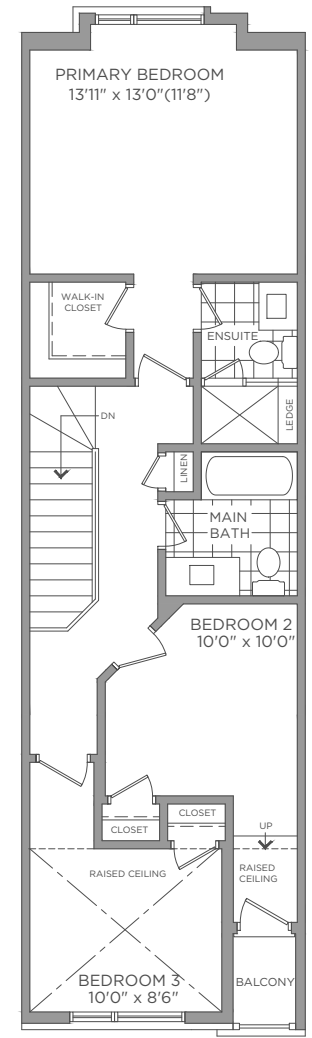
OPT. FIRST FLOOR ELEVATION A / B



SECOND FLOOR ELEVATION A



OPT. SECOND FLOOR



THIRD FLOOR ELEVATION A



Dimensions, materials, specifications, structural elements and floorplans are subject to change without notice. Actual usable floor space may vary from the stated floor area. Layout shown may be the reverse of the unit purchased. Exterior elevation and site plan are subject to approval by applicable authorities and the purchaser agrees to accept any change. The size and location of window, mullions, exterior doors, furnaces, HVAC Units, patios and/or balconies are subject to change and may vary depending on unit location within the project. All illustrations are artist's concept only. E. & O. E., June 2023

CITY TOWN
C-1958
 1,958 SQ.FT.

BROOKIN

TOWNS

- ⊠ 2,030 SQ.FT.
- 🛏 3 beds
(OPTIONAL 4 BEDS)
- 🚿 3 baths
- 🚽 1 powder
- 🚗 1 garage

CORNER UNIT

CITY TOWN
C-2030



TRADITIONAL TOWNS
2 STOREY TOWNS
BLOCKS: 1 AND 2

- T-1697
1697 SQ.FT.
- T-1715
1715 SQ.FT.
- T-1729
1729.FT.

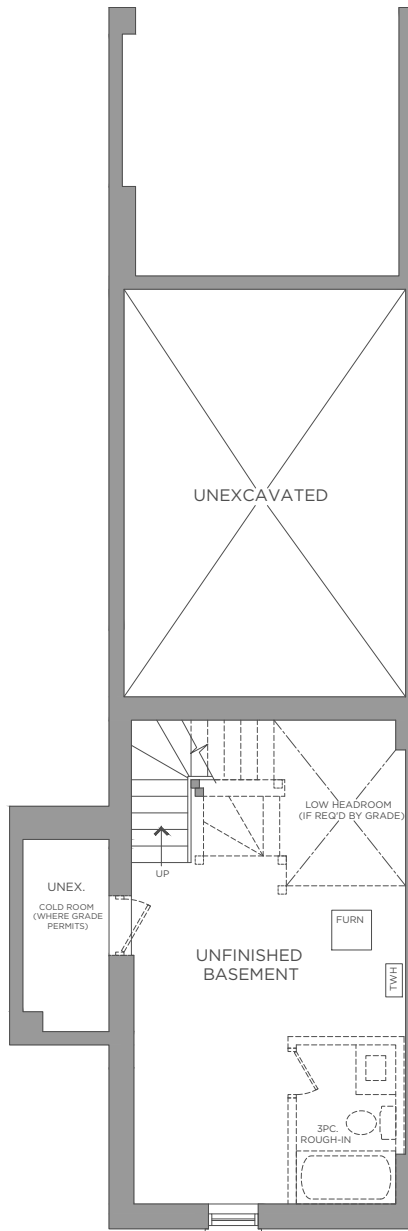
STREET TOWNS
3 STOREY TOWNS
BLOCKS: 3, 4, 5

- S-1951
1951 SQ.FT.
- S-2010
2010 SQ.FT.
- S-2147
2147 SQ.FT.
- S-2182
2182 SQ.FT.
- S-2467
2467 SQ.FT.

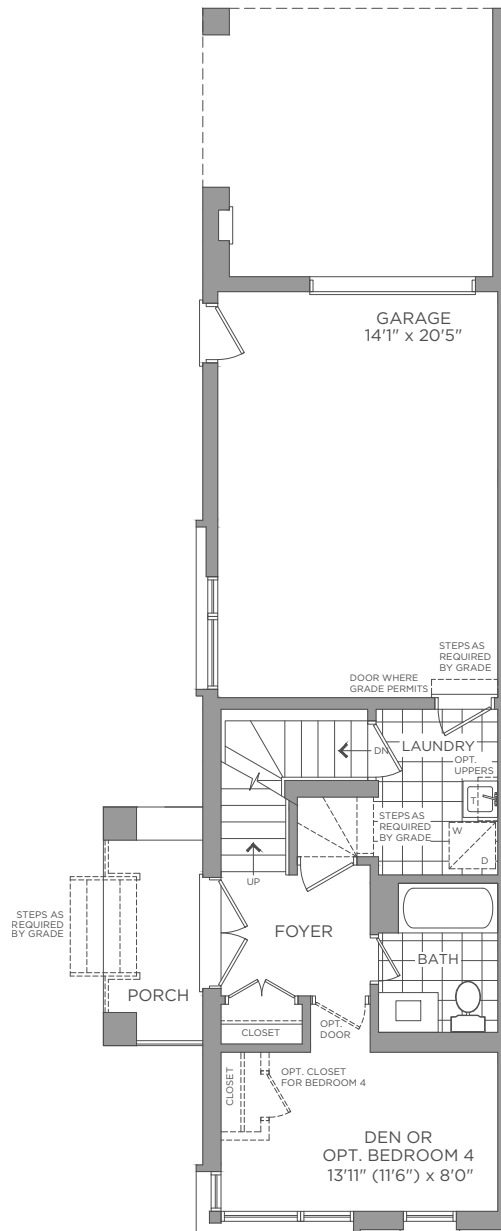
CITY TOWNS
3 STOREY TOWNS
BLOCKS: 6, 7, 8, 9, 10

- C-1944
1944 SQ.FT.
- C-1952
1952 SQ.FT.
- C-1958
1958 SQ.FT.
- C-2030
2030 SQ.FT.
- C-2063
2063 SQ.FT.
- C-2300
2300 SQ.FT.

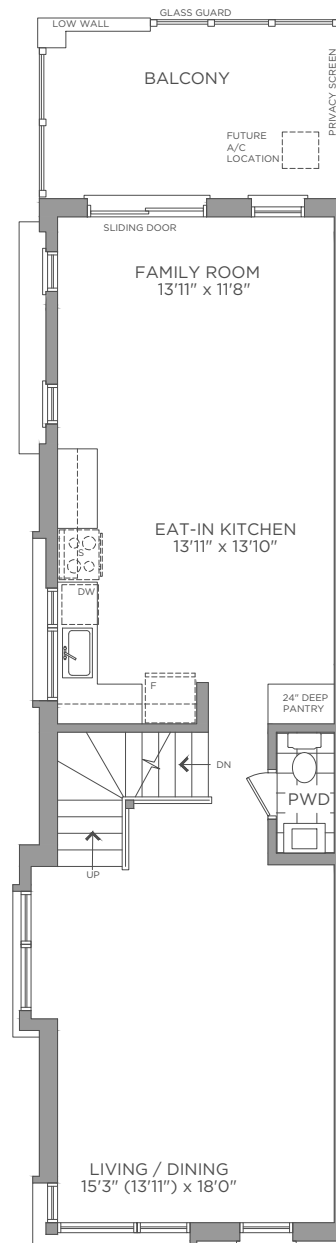




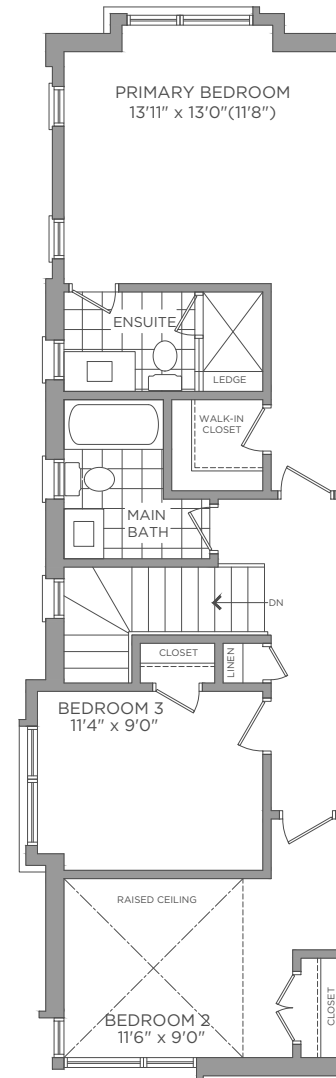
BASEMENT ELEVATION A



FIRST FLOOR ELEVATION A



SECOND FLOOR ELEVATION A



THIRD FLOOR ELEVATION A



BROOKIN

TOWNS




-  2,063 SQ.FT.
-  3 beds
(OPTIONAL 4 BEDS)
-  2 baths
(OPTIONAL 3 BATHS)
-  2 powder
-  1 garage

INTERIOR END UNIT


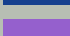



CITY TOWN
C-2063









TRADITIONAL TOWNS
2 STOREY TOWNS
BLOCKS: 1 AND 2

-  T-1697
1697 SQ.FT.
-  T-1715
1715 SQ.FT.
-  T-1729
1729 SQ.FT.

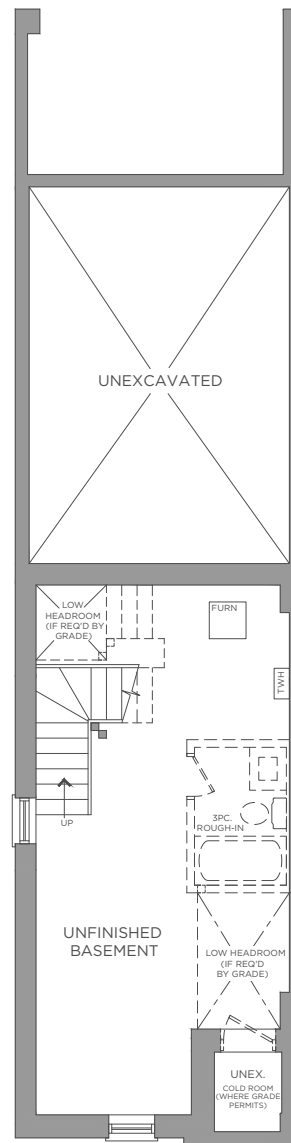
STREET TOWNS
3 STOREY TOWNS
BLOCKS: 3, 4, 5

-  S-1951
1951 SQ.FT.
-  S-2010
2010 SQ.FT.
-  S-2147
2147 SQ.FT.
-  S-2182
2182 SQ.FT.
-  S-2467
2467 SQ.FT.

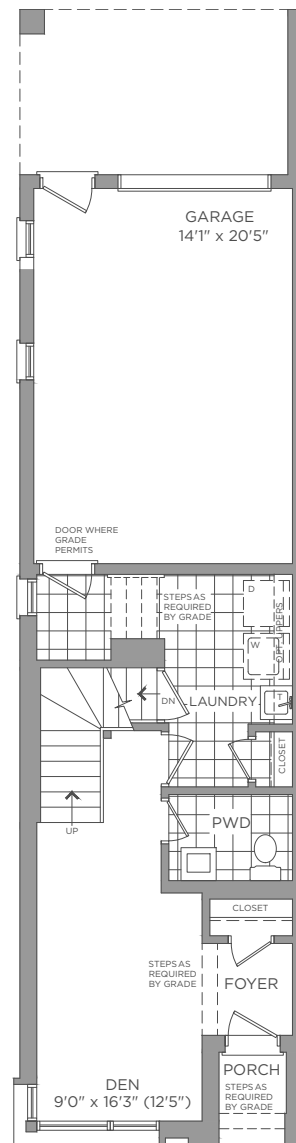
CITY TOWNS
3 STOREY TOWNS
BLOCKS: 6, 7, 8, 9, 10

-  C-1944
1944 SQ.FT.
-  C-1952
1952 SQ.FT.
-  C-1958
1958 SQ.FT.
-  C-2030
2030 SQ.FT.
-  C-2063
2063 SQ.FT.
-  C-2300
2300 SQ.FT.

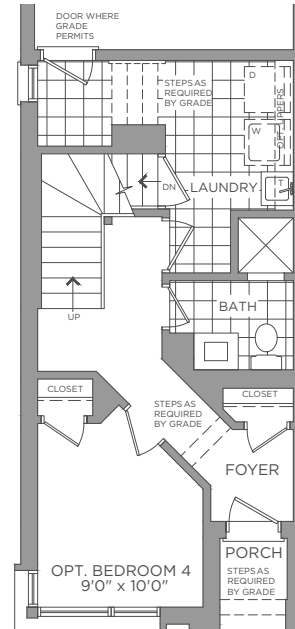




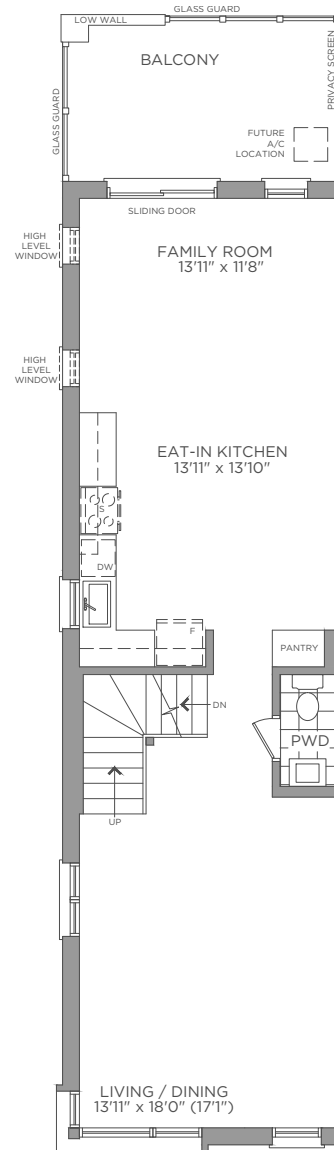
BASEMENT
ELEVATION A / B



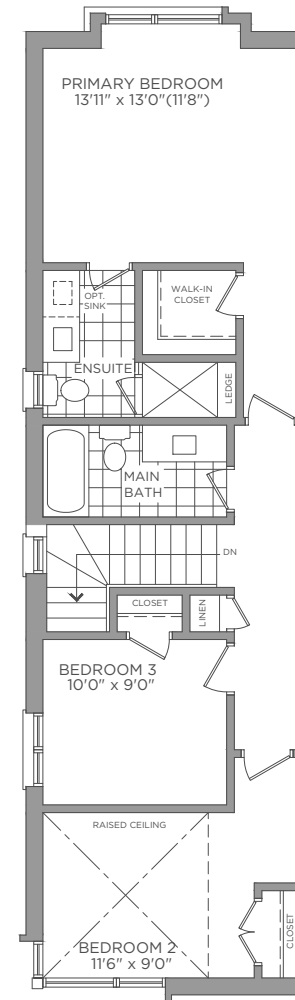
FIRST FLOOR
ELEVATION A / B



OPT. FIRST FLOOR
ELEVATION A / B



SECOND FLOOR
ELEVATION A / B



THIRD FLOOR
ELEVATION A



C-2063 Kitchen and Family Room

BROOKIN

TOWNS

- ⊠ 2,300 SQ.FT.
- 🛏 3 beds
(OPTIONAL 4 BEDS)
- 🚿 3 baths
- 🚽 1 powder
- 🚗 1 garage

CORNER UNIT

CITY TOWN
C-2300



TRADITIONAL TOWNS
2 STOREY TOWNS
BLOCKS: 1 AND 2

- T-1697
1697 SQ.FT.
- T-1715
1715 SQ.FT.
- T-1729
1729.FT.

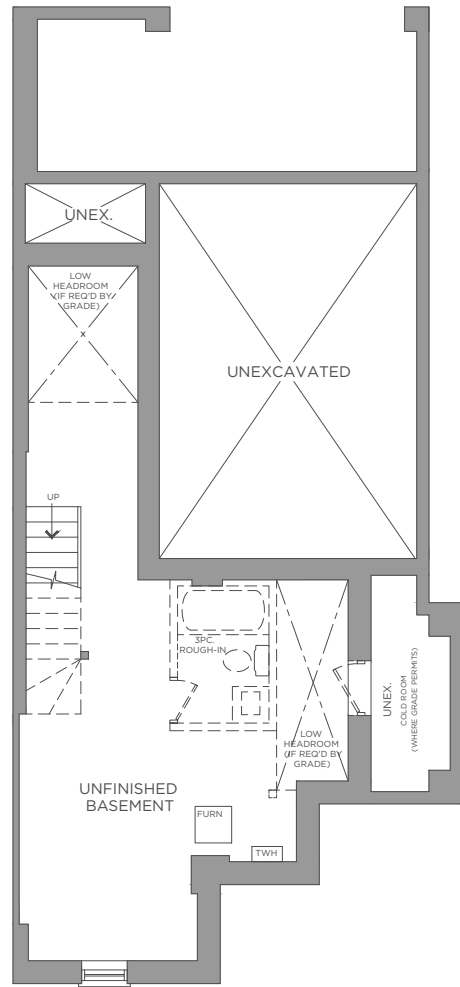
STREET TOWNS
3 STOREY TOWNS
BLOCKS: 3, 4, 5

- S-1951
1951 SQ.FT.
- S-2010
2010 SQ.FT.
- S-2147
2147 SQ.FT.
- S-2182
2182 SQ.FT.
- S-2467
2467 SQ.FT.

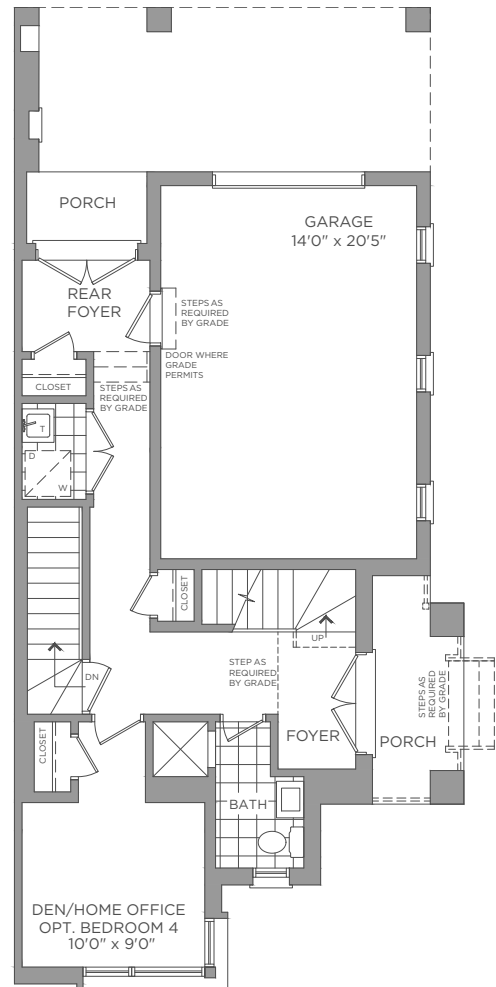
CITY TOWNS
3 STOREY TOWNS
BLOCKS: 6, 7, 8, 9, 10

- C-1944
1944 SQ.FT.
- C-1952
1952 SQ.FT.
- C-1958
1958 SQ.FT.
- C-2030
2030 SQ.FT.
- C-2063
2063 SQ.FT.
- C-2300
2300 SQ.FT.

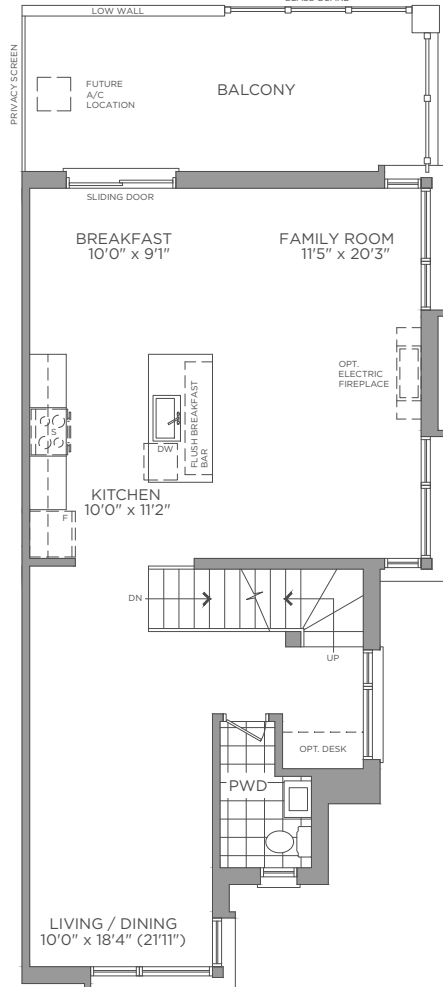




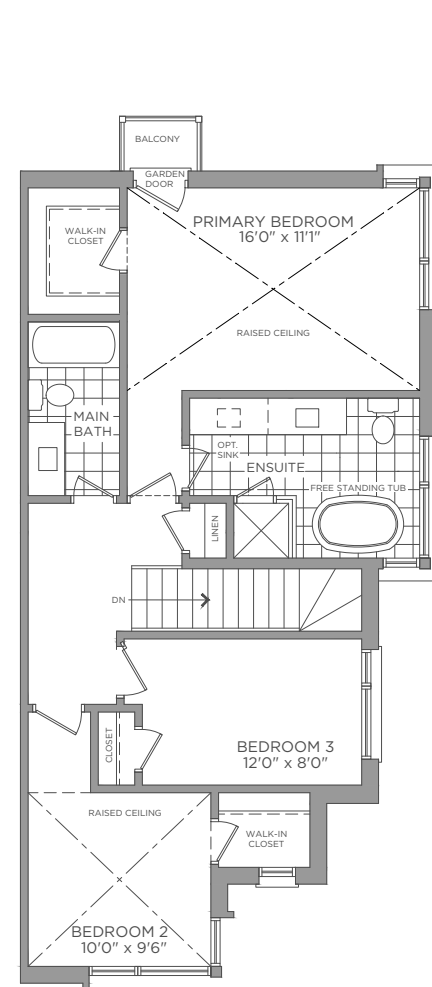
BASEMENT ELEVATION A



FIRST FLOOR ELEVATION A



SECOND FLOOR ELEVATION A



THIRD FLOOR ELEVATION A



C-2063 Kitchen and Family Room / Similar to C-2300