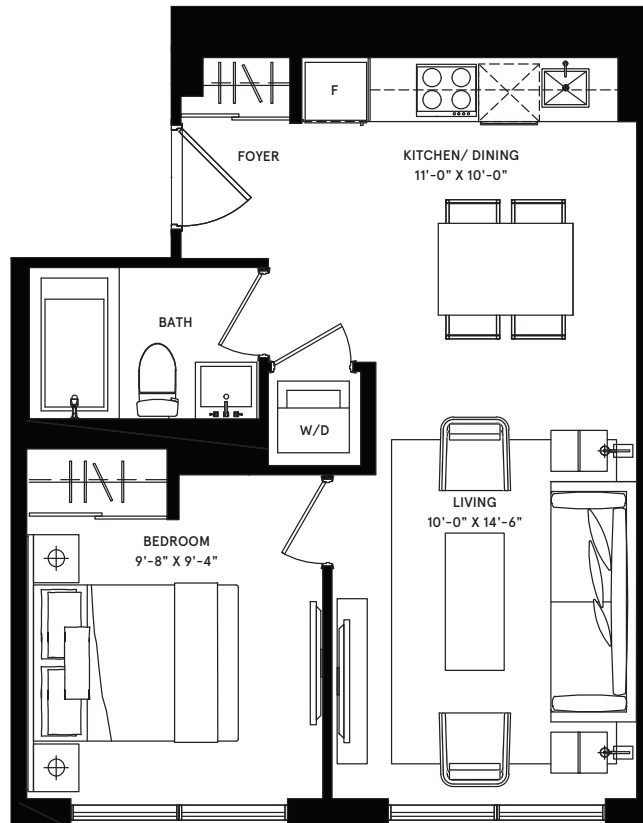


# osaka

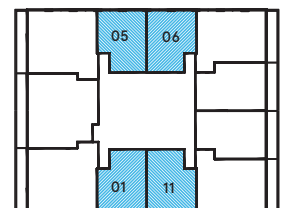
**1 BEDROOM**  
**total: 515 sq.ft.**

interior: 515 sq.ft.



NORTH

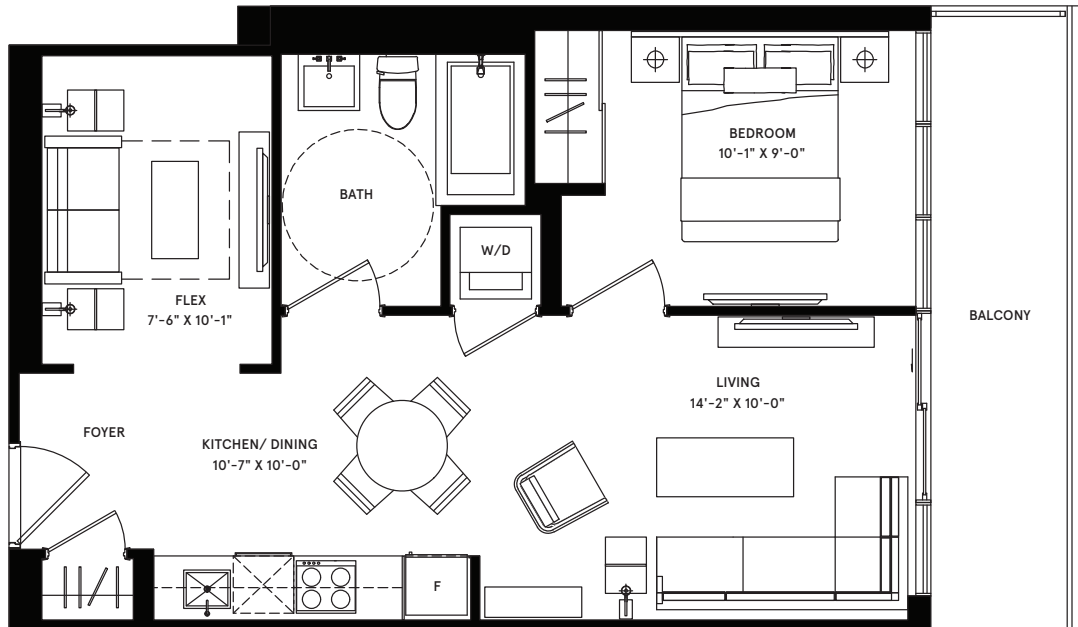
FLOOR TYPE B  
FLOORS 56-60



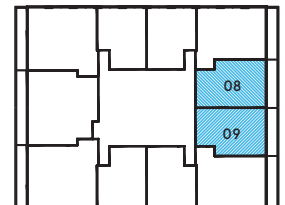
# sorrento

**1 BEDROOM + FLEX**  
**total: 700 sq.ft.**

interior: 602 sq.ft.  
 exterior: 98 sq.ft.



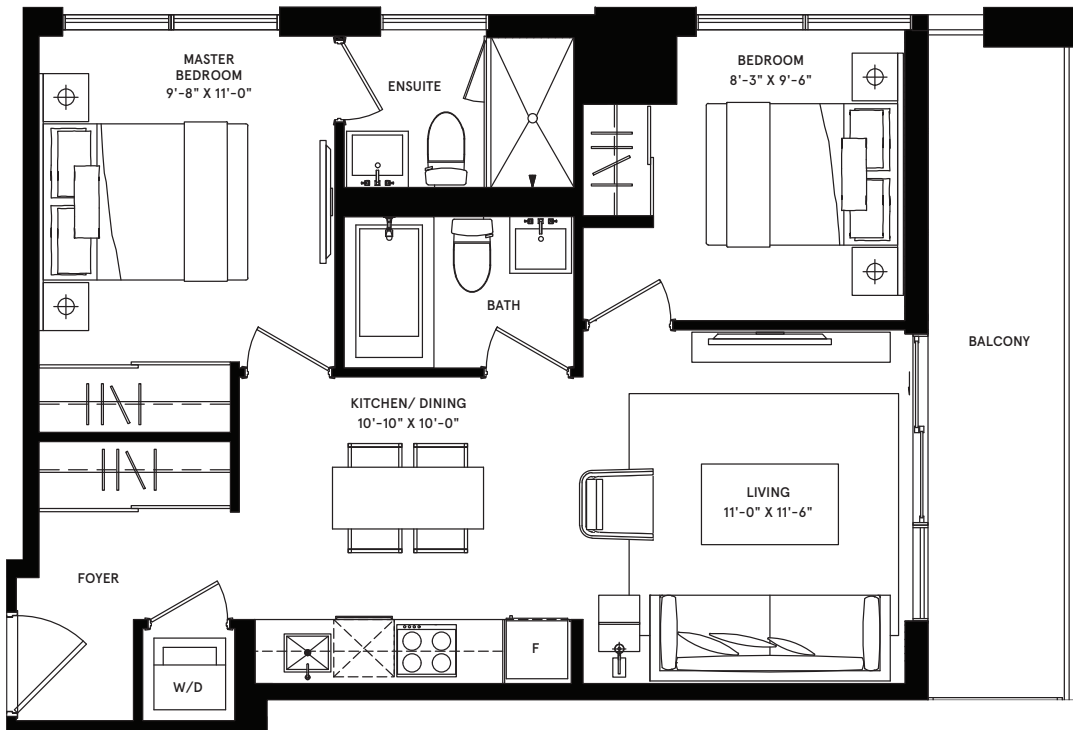
NORTH  
 FLOOR TYPE B  
 FLOORS 55-60



# seville

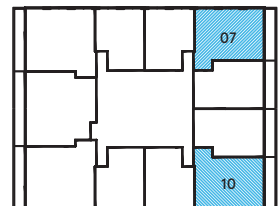
2 BEDROOM  
total: 776 sq.ft.

interior: 670 sq.ft.  
exterior: 106 sq.ft.



NORTH  
↑

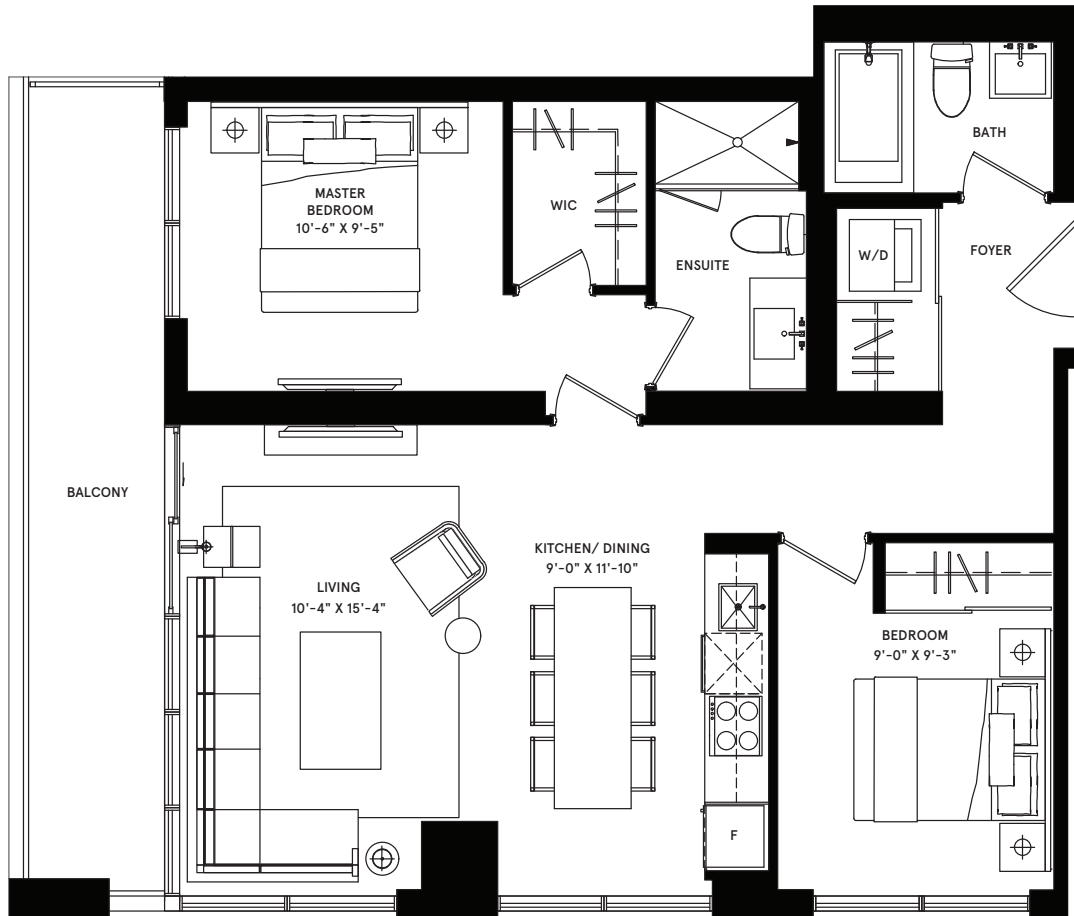
FLOOR TYPE B  
FLOORS 56-60



# bali

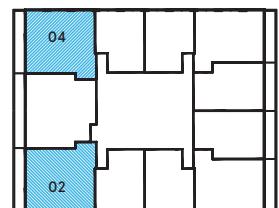
2 BEDROOM  
total: 950 sq.ft.

interior: 820 sq.ft.  
exterior: 130 sq.ft.



NORTH  
↑

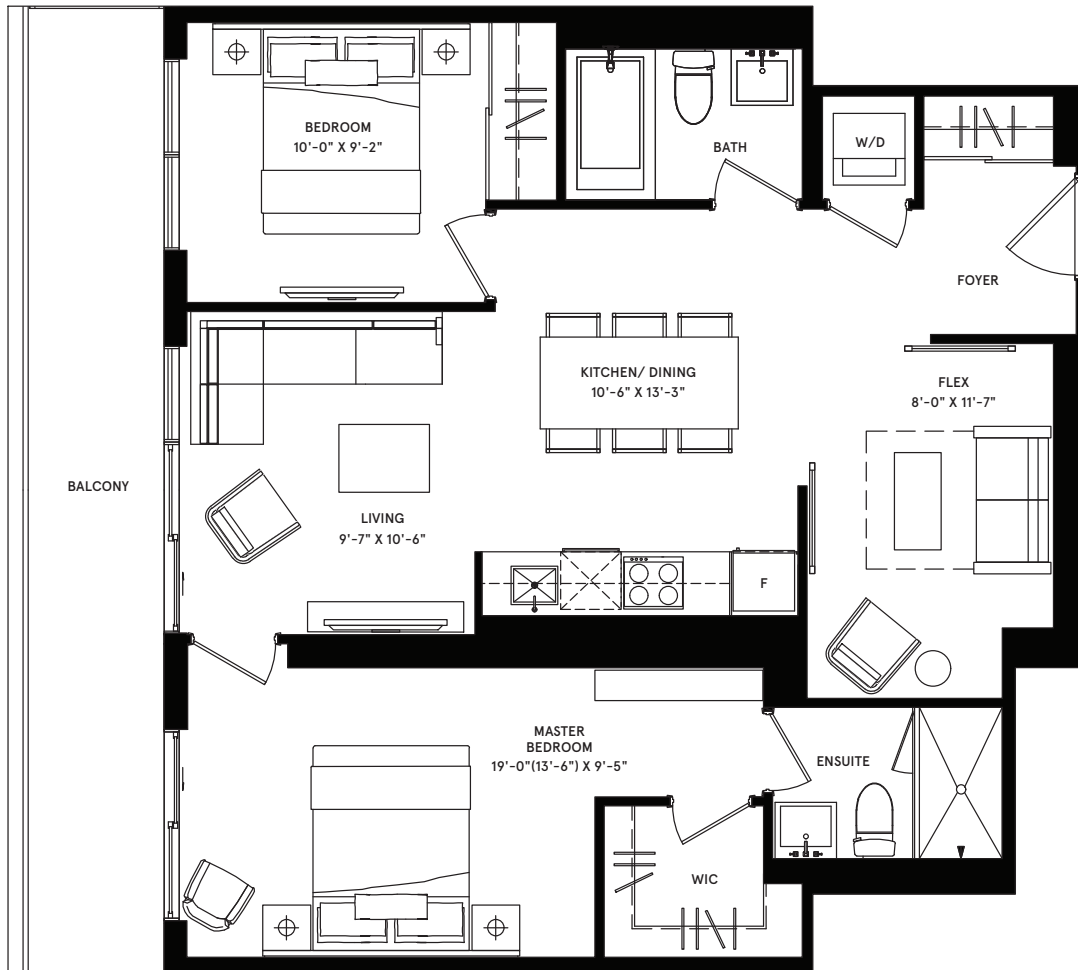
FLOOR TYPE B  
FLOORS 56-60



# boston

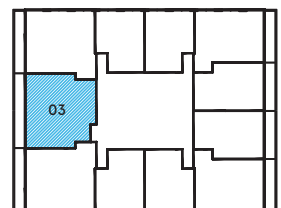
2 BEDROOM + FLEX  
total: 1,040 sq.ft.

interior: 885 sq.ft.  
exterior: 155 sq.ft.



NORTH

FLOOR TYPE B  
FLOORS 55-60



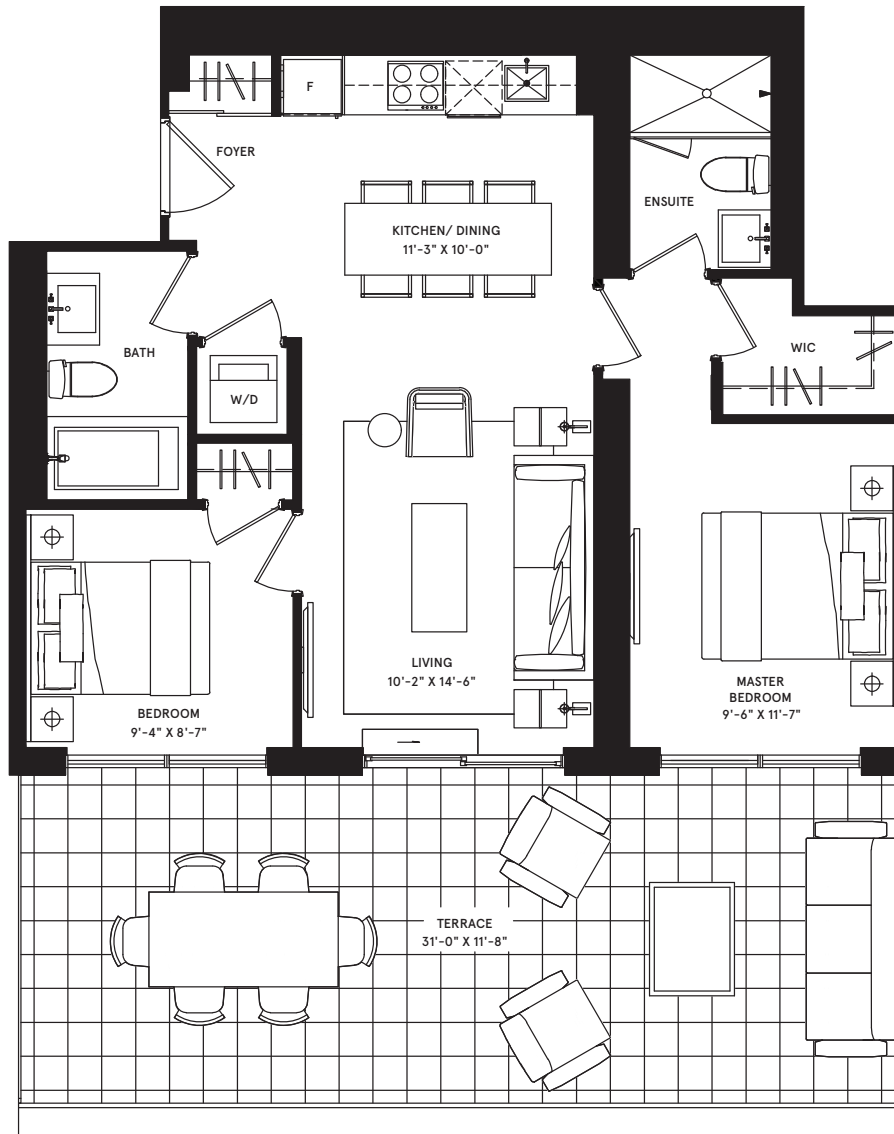
# brussels - sky terrace

2 BEDROOM

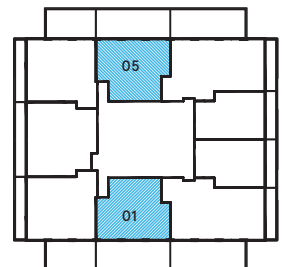
total: 1,149 sq.ft.

interior: 749 sq.ft.

exterior: 400 sq.ft.



NORTH  
TERRACE FLOOR TYPE B  
FLOORS 55



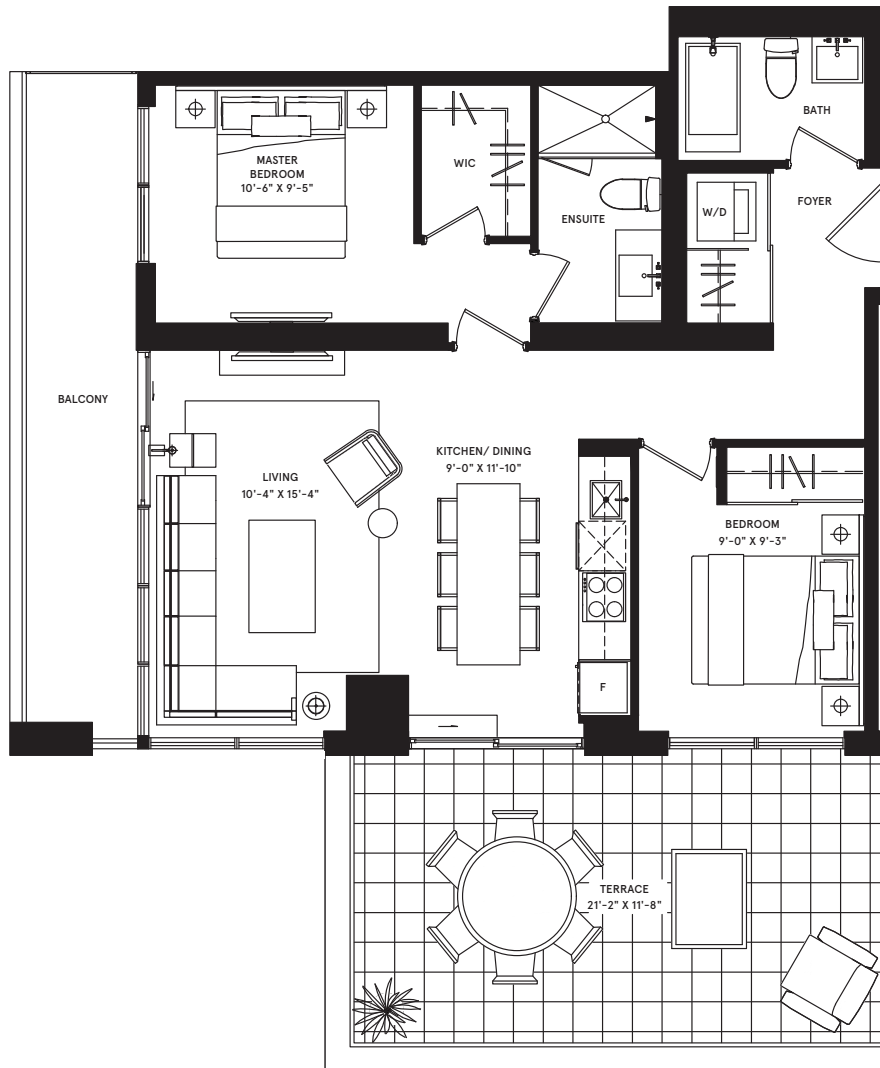
# bali - sky terrace

2 BEDROOM

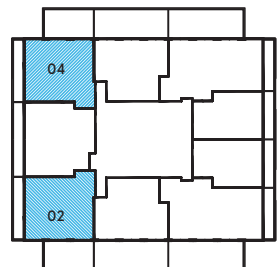
total: 1,235 sq.ft.

interior: 820 sq.ft.

exterior: 415 sq.ft.



NORTH  
TERRACE FLOOR TYPE B  
FLOORS 55



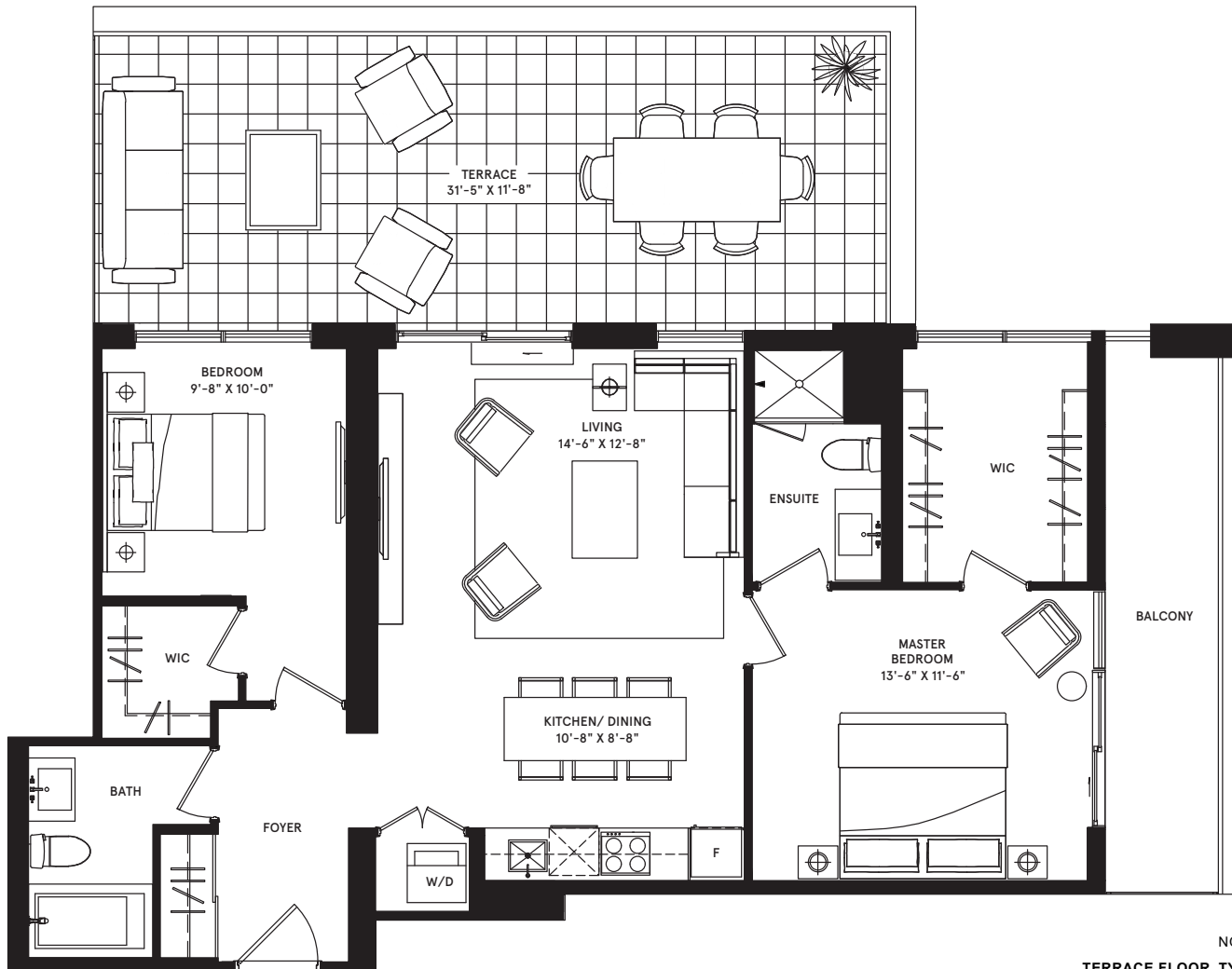
# copenhagen- sky terrace

2 BEDROOM

total: 1,505 sq.ft.

interior: 980 sq.ft.

exterior: 525 sq.ft.



NORTH  
TERRACE FLOOR TYPE B  
FLOORS 55

